

2015-16

Annual Report



Webb Institute



Webb Institute

2015-16 Annual Report

Contents

2	Message from the President
3	Board of Trustees
3	Faculty and Staff
4	Message from the Chairman of the Board
5	Message from the Development Committee Chair
6	Message from the Chairman of the <i>Campaign for Webb</i>
7-8	Campaign for Webb
9-10	Alfred M. Zeien '52 – Intelligence, Dedication, Integrity
11-13	Planning for a New Academic Building
14-15	Message from the Dean
16	Message from the Chairman of the Webb Alumni Fund
17	Alumni Association Executive Committee
17	Alumni Regional Coordinators
17	Webb Group Leaders
17	Class Agents
18	2015-2016 Class Giving Summary
19-20	Regional Events: Charting the Course for Webb
21-25	2015-2016 Donations William H. Webb Society Webb Honor Roll Donors
26-28	Volunteer Spotlight: Helping Power Webb's Engine
29-30	2015-2016 Cumulative Giving
31	A Message from the Webb Parents Association Chair
31	Webb Parent Annual Fund: Reaching New Heights
32	Jen and Tom Waters Accept Position as Co-Chairs of Webb Parent Annual Fund
33-34	The Webb Heritage Society
35-36	Donald T. "Boysie" Bollinger A Life Beyond Shipbuilding
37	Scholarships & Endowments
38	2015-2016 Donations Gifts in Honor of, In Memory of, WAA Donations in Memory of
38	The Admiralty Club
39	2015-2016 Webb Every Year (WebbEY) Program
40	2015-2016 Matching Gift Organizations
41-42	Finance & Investments Fiscal Year 2016 (FY16)



Page 09



Page 19



Page 35

Contributors

R. Keith Michel '73
President

Matthew Werner '95, PG'97
Dean & ABS Chair of Naval Architecture & Marine Engineering

Graphic Design & Layout:

Kerri Allegretta
Director of Media Relations & Communications

Supervising Editor:

Anthony R. Zic
Director of Development

Editors:

Dr. Richard Harris
Assistant Dean & Director of Humanities

Gailmarie Sujecki (Hon.)
Executive Assistant to the President & Director of Alumni Relations

Josie Wilson (Hon.)
Director of Academic Services

Editorial & Photo Contributors:

Taylor Adamczyk	George Mouravieff P'09,
Dr. George Campbell Jr.	P'11, P'16
Joseph Cascio	Richard P. Neilson '70
Joe Cuneo '57	Jake M. Neuman '93
Alison Granger P'14	Gailmarie Sujecki (Hon.)
Shanna Hamilton	Jennifer Waters '91
Jon J. LaBerge '76	Matthew Werner '95, PG'97
R. Keith Michel '73	Anthony R. Zic

Our Vision:

To be internationally recognized as a leading undergraduate educational institution in naval architecture and marine engineering and an asset to the nation by:

- Providing exceptional young men and women with a contemporary and comprehensive undergraduate education focused on naval architecture and marine engineering, thereby preparing them for prominent careers in the marine industry or other fields of endeavor.
- Providing valued technical expertise and educational opportunities to the marine industry.

Our Mission:

To prepare graduates for prominent careers by:

- Providing a rigorous education in the principles of engineering and a broad-based knowledge of the fundamentals of naval architecture and marine engineering.
- Developing skills that will enable graduates to become leaders in and make significant contributions to their chosen profession, and to the social environment in which it functions.
- Instilling in our graduates the highest ethical standards and sense of professionalism; cultivating curiosity in the arts, sciences, and humanities, and providing the background and encouragement necessary to support life-long learning.
- Perpetuating the legacy of William H. Webb.



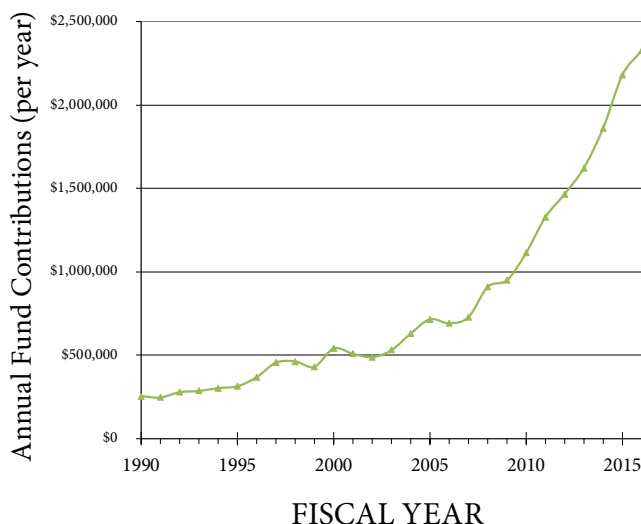
R. Keith Michel '73
President

Together We Are Making a Difference!

Campaign for Webb Soaring to New Heights

Thank you for your extraordinary support this past year.

The graph below shows annual contributions to Webb's Annual Fund, which includes gifts from all constituencies under \$100,000 in size. Alumni giving has grown at double-digit rates for the past decade and has increased at an annualized rate of 15% during the past three years. Alumni Fund contributions for FY16 totaled nearly \$1.9 million; please read more from the Alumni Fund Chair, Jake Neuman '93, on page 16. Other members of the Webb community, including parents, past parents, and the many friends of Webb, have followed the alumni lead and displayed unprecedented generosity. As a result, in fiscal year 2016, Webb's Annual Fund grew to over \$2.3 million, the most in Webb's history.



We have worked diligently to control expenditures. Through a variety of programs such as energy efficiency upgrades, more effective procedures for procuring equipment, and streamlining of operations, we have managed to hold operating costs flat over the last three years while improving the quality of services at Webb. Combined with the record-setting level of contributions, this means a lower draw on our endowment.

Last year, the Annual Fund covered a remarkable 35% of our operating costs—another record for Webb.

The *Campaign for Webb* is a comprehensive campaign, in which all gifts to Webb are counted toward the *Campaign* goal. Including the Annual Fund and major gifts and pledges, *Campaign* giving now exceeds \$36.5 million. As *Campaign* Chair Joe Cuneo cautions in his article on page 6, however, this is not a time for complacency. We should celebrate our success to date, but there is more to be done. It is vitally important that we meet and exceed our goal, as we look to build an endowment that is sustainable and ensures our ability to maintain and build upon our scholarship program in the coming years.

We are all excited about the impact the *Campaign* will have on the future of the Institute. I appreciate the many comments we received from alumni and friends of Webb as we move forward on a new academic center and renovations to Stevenson Taylor Hall. In this report, you will find articles highlighting plans for new infrastructure (pages 11-13) and Webb's finances (page 41), profiles of several of our *Campaign* donors (pages 7 and 9), and further details on the year's fundraising successes. Together we are making a difference!

BOARD OF TRUSTEES

OFFICERS

Chairman
Dr. George Campbell, Jr.
President Emeritus
Cooper Union

Vice Chairman & Treasurer
Jon J. LaBerge '76

Vice Chairman
Gregory M. Matzat '89
Senior Advisor
U.S. Department of Energy

President
R. Keith Michel '73
Webb Institute

Secretary
John N. Costello '89
Managing Counsel, Intellectual
Property & Technology
Laureate Education, Inc.

OTHER TRUSTEES

Christopher D. Allard '04
President
Metal Shark Aluminum Boats

Benjamin G. Bordelon
President & CEO
Bollinger Shipyards LLC

David M. Bovet '70
Managing Partner
New Harbor Consultants

Jack Buono
President & CEO
SeaRiver Maritime, Inc.

CDR Richard C. Celotto, USN (Ret.) '73
Vice President, Engineering
BMT Designers & Planners, Inc.

Joseph N. Corvelli '93
Senior Vice President
Vigor Industrial

Dr. John C. Couch (Hon.)
Vice Chairman
C.M. Capital Corp.

Joseph J. Cuneo '57

Hampton K. Dixon '11
Project Manager, Hotel Refurbishment
Carnival Cruise Line

Alison D. Granger P'14
Chief Investment Officer
Hartford Foundation for Public
Giving

Margaret "Peggy" Harris

Jennifer E. Kollmer '91
Chief Naval Architect
Rolls-Royce Marine North America
Inc.

John A. Malone '71
Malone Consulting Services

Mark F. Martecchini '79
President
Stolt Tankers

Greggory B. Mendenhall
G B Mendenhall Pllc.

Dr. Stephen M. Payne
Vice President/Chief Naval
Architect (Ret.)
Carnival Corporate Shipbuilding
Southampton

Joseph H. Pyne
Executive Chairman
Kirby Corporation

Wombi Rose '09
President
lovepop, Inc.

Bruce S. Rosenblatt (Hon.)
President
Bruce S. Rosenblatt & Associates, LLC

VADM Paul Sullivan, USN (Ret.)
Director, Applied Research Laboratory
The Pennsylvania State University
Applied Research Laboratory

Dr. Luther Tai
Chairman, CEO
Roberts Bay Marina, LLC

Michael W. Toner
Executive Vice President, Marine
Systems (Ret.)
General Dynamics Corp.

Dr. Jennifer K. Waters '91
Associate Dean for Academic Affairs
United States Naval Academy

Christopher Wiernicki
Chairman, President & CEO
American Bureau of Shipping

EX-OFFICIO TRUSTEES

Christopher Johnson '18
Student Representative
Webb Institute

Dr. Richard A. Royce
James J. Henry Professor of Naval
Architecture and Director of Research
Webb Institute

Matthew R. Werner '95 & PG'97
Dean & ABS Chair of Naval
Architecture and Marine Engineering
Webb Institute

CHAIRMAN EMERITUS

Dr. Charles G. Visconti, D.C.S. (Hon.) '55
Chairman & President
International Cargo Gear Bureau, Inc.

PRESIDENT EMERITUS

Ronald K. Kiss '63

TRUSTEE EMERITUS

Patrick J. Gilmartin, Esq. (Hon.)
Gilmartin, Poster & Shaffo

Robert D. Goldbach '58

William O. Gray (Hon.)
President
Gray Maritime Company

David H. Klings (Hon.)
President, Marine Construction
Div. (Ret.)
Bethlehem Steel Corp.

John W. Russell '67
President
Russell Development Co., Inc.

Dr. Peter Van Dyke '60
Managing Director (Ret.)
T. Rowe Price

HONORARY TRUSTEES

Dr. Charles R. Cushing
President
C.R. Cushing & Co., Inc.

Dr. Jerrier A. Haddad, (Hon.)
Vice President (Ret.)
IBM

Charles Kurz II (Hon.)
President Emeritus
Keystone Shipping Co.

Dr. Richard T. Soper (Hon.)
President & Chairman (Ret.)
American Bureau of Shipping

FACULTY AND STAFF

FULL-TIME FACULTY

Dean & ABS Chair of Naval Architecture &
Marine Engineering
Matthew R. Werner, B.S., M.S., M.B.A., P.E.

Assistant Professor of Structural Engineering
John C. Daidola, B.S.E., M.S.E., Ph.D., P.E.

Shirley N. & Stephen R. Towne Professor of
Ship Design
Neil J. Gallagher, B.S., M.S., P.E.

Professor of Mathematics
Elena V. Goloubeva, B.S., M.S., Ph.D.

Assistant Dean, John J. McMullen Professor
of Humanities & Director of Humanities
Richard C. Harris, B.A., M.A., Ph.D.

Assistant Professor of Electrical Engineering
Michael T. Martin, B.S., M.S., P.E., P.M.P., C.E.M

Associate Professor of Naval Architecture
Adrian S. Onas, B.Sc., M.Sc., Ph.D.

James J. Henry Professor of Naval
Architecture & Director of Research
Richard A. Royce, BSIM, B.S.E., M.S., M.S.E., Ph.D., P.E.

Assistant Professor of Marine Engineering
Benjamin H. Scott, B.S., M.S.

Mandell & Lester Rosenblatt Professor of
Marine Engineering
Edwin G. Wiggins, B.S., M.S., Ph.D.

FACULTY EMERITI

Professor Emeritus of Engineering
Thomas H. Bond, B.S., B.E.E., M.E.E., P.E.

Dean Emeritus, Professor of Naval
Architecture
Roger H. Compton, B.S., M.S., D.Eng.

Professor Emeritus of Naval Architecture
Jacques B. Hadler, Sc.D. (Hon.) B.S., M.S., P.E.

Professor Emeritus of Electrical Engineering
John F. Hennings, B.S., M.S.

Professor Emeritus of Naval Architecture
Richard P. Neilson, B.S., M.S.

Professor Emeritus of Marine Engineering
Alan L. Rowen, B.E., M.S., P.E.

Professor Emeritus of Mathematics
Bruce Stephan, B.S., M.S., Ph.D.

Professor Emeritus of Engineering
Lawrence W. Ward, B.S., M.S., D.Sc.

ADMINISTRATION

Assistant Director of Media Relations &
Communications
Taylor Adamczyk

Assistant to the Director of Financial Affairs
Karen L. Albanese

Assistant Director of Information Technology
Jared Allegretta

Director of Media Relations &
Communications
Kerri Allegretta

Director of Admissions & Student Affairs
Lauren Carballo

Assistant Director of Development -
Annual Fund
Joseph Cascio

Director of Athletics & Electronics Lab
Technician
Patrick Doherty

Director of Facilities
John Ferrante

Assistant Director of Development -
Development Services
Shanna Hamilton

Director of Financial Affairs
Rhonda Lightcap

Assistant Director of Student Affairs &
Admissions
Michael Malinowski

Laboratory Technician Emeritus
Joseph Mazurek (Hon.)

President
R. Keith Michel '73

Director of Information Technology
Peter P. Miller

Director of Human Resources
Svetlana Miller

Library Director
Patricia Prescott

Executive Assistant to the President &
Director of Alumni Relations
Gailmarie Sujeki (Hon.)

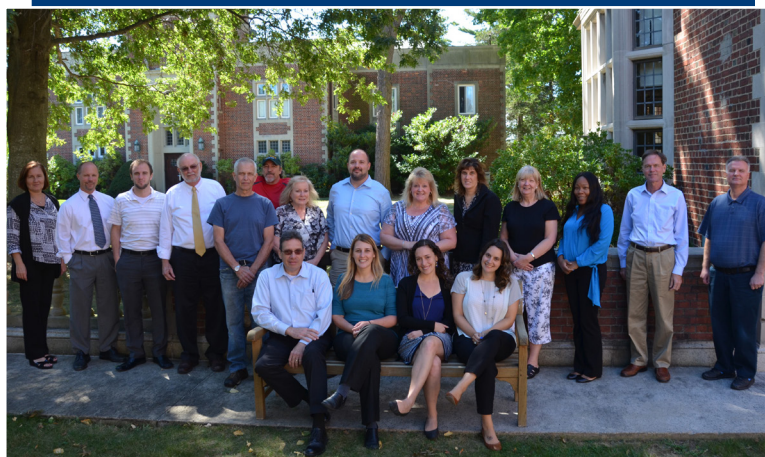
Engineering Laboratory
Technician-Machinist
James Swan

Plant Superintendent
Fernando Tamayo

Food Service Director
Joseph Tirado

Director of Academic Services
Jocelyn Wilson (Hon.)

Director of Development
Anthony R. Zic



Campaign for Webb:

Reflecting Upon the Evolution of Webb



George Campbell Jr., Ph.D.
Chairman of the Board

As my term of office comes to a close, I'd like to reiterate what an honor and privilege it has been to serve as Chairman of the Board of Trustees of Webb Institute. I also want to offer my sincere thanks to the students, faculty, alumni, staff, administration, and fellow trustees for their extraordinary, sustained support during my tenure.

Reflecting on the evolution of the Institute over the past four years, I find much to celebrate in the face of growing challenges to American higher education. Academic year 2012-13 marked a transition to a new president, Keith Michel '73, who, building on the past, brought renewed vigor and energy to Webb's historic mission, along with a transformative outlook and clarity of vision for the Institute's future. As we expanded and reorganized the Board of Trustees, updating our governance structures, the new president restructured the college's administrative operations and assembled an outstanding leadership team, culminating in the appointment of a new dean, Matthew Werner, in 2015.

In 2013-14 we celebrated Webb's 125th anniversary, reaffirming our ongoing commitment to academic excellence and unfettered opportunity, providing a full-tuition scholarship for each admitted student. The anniversary events, buttressed by a new published history, *Webb Institute: 125 Years of Excellence*, brought enhanced media attention and increased visibility for Webb. In addition, the same year we began to lay the foundation for a comprehensive campaign, with substantial start-up funds through the personal financial support of members of the Board of Trustees.

In 2014-15 we successfully presented our Periodic Review Report to the Middle States Commission on Higher Education, an important element of the ongoing accreditation process. Then in the fall of 2015, we officially launched the \$40 million *Campaign for Webb*, and the *Campaign* progress to date bears all of the earmarks of a resounding success. Already the Institute has secured \$36.5 million, over 90 percent of the six-year goal. Beyond funding the underpinning infrastructure

to initiate the campaign, eleven trustees have already made commitments in excess of \$100,000.

One of the principal goals of the *Campaign for Webb* is to fund the renewal and expansion of Webb's facilities to enable modest growth and ensure state-of-the-art facilities for a 21st-century engineering education. Under the brilliant, meticulous, and selfless leadership of David Bovet '70, the Planning Committee of the Board, along with President Michel, worked tirelessly over the past several years developing a conceptual framework for the renewal of the campus infrastructure. This required assiduous, multiple outreach efforts to engage and incorporate the perspectives of alumni, faculty, students, trustees, and other stakeholders. Their work is destined to bear fruit in the coming year with a potentially transformative campus revitalization plan, secured in part by contributions already obtained through the *Campaign*.

I pass on the chairmanship to my successor, Bruce Rosenblatt, with a great deal of pride in our accomplishments, and also with enormous gratification that the Webb Board of Trustees will have a proven, exceptional leader to guide the Institute over the coming years.



Dr. George Campbell Jr., with President Michel, Professor Emeritus Jacques Hadler, and Dean Emeritus Roger Compton at the Heritage Society Dinner last May.



Alison D. Granger P'14
Development Committee Chair

A Year for Webb's Record Books

Thank you. Webb Institute's fiscal year 2016 fundraising results are ones for its record books. Over \$20.5 million was raised from a total of 2,132 gifts and pledges. We appreciate each and every dollar which has been so generously contributed by our donors. These totals represent an 11% increase in the number of gifts received relative to the prior fiscal year and a 97% increase in total dollars pledged or received. As this report indicates, a number of other important fundraising milestones were also passed. We are confident that this year's success will continue to inspire current and prospective donor confidence, will further the already-strong momentum of the *Campaign for Webb*, and will go a long way toward ensuring that the foundations of Webb's finances and campus infrastructure remain sound for generations to come.

I would like to extend my personal thanks to *Campaign for Webb* Chair Joe Cuneo '57, Webb Alumni Fund Chair Jake Neuman '93, Webb Planned Giving Chair John Malone '71, Webb Parent Annual Fund Co-Chairs Jeannine and Tim Dugan P'17, Webb Parent of Alumni Fund Chair Hal Granger P'14, my colleagues on Webb's Development Committee, and all of the dedicated class agents, parents, alumni, and friends of Webb whose volunteer efforts contributed to this year's success.

Those individuals who work at Webb have been important contributors as well. Our volunteers have been enthusiastically supported by Webb staff members Anthony Zic, Greg Monfiletto, Shanna Hamilton, and Gailmarie Sujecki. I am sure that those readers who have visited campus or been at Webb-sponsored meetings over recent years will agree that Keith and Peggy Michel have been engaging and effective ambassadors for Webb. We are grateful to them for their efforts and their hospitality.

The eighteen regional events that were held throughout the US and in Europe during the past winter and spring served as a wonderful opportunity to deliver a "State of Webb" to the entire Webb family. They also provided a chance for many alumni, parents, and friends to rekindle old friendships and to establish new ones. We

are grateful to President Michel, Dean Werner, and the trustees who presented at the events, and to all who were involved in helping to make these gatherings a success.

As we enter the new fiscal year, we would like to thank Jeannine and Tim Dugan P'17 for their service on the Webb Parent Annual Fund Committee and for their co-leadership of it during the past two years. I am delighted to report that Jen '91 and Tom '89 Waters, P'20 have enthusiastically agreed to co-chair the committee in the coming year, and we are looking forward to working with them toward continued parent engagement in fundraising activities at Webb. We were sorry to say goodbye at the end of June to Greg Monfiletto, Assistant Director of Annual Fund, Stewardship, and Research and appreciate his two years of service to Webb. He was succeeded by Joe Cascio who joined Webb in August. Please join us in welcoming Joe to the Development Office at Webb.

We appreciate your confidence and look forward to building on this year's success. Thank you.



Alison Granger meeting the Class of 2020 and their parents during Orientation this past August.



Joe Cuneo '57
Chairman, *Campaign for Webb*

A MESSAGE FROM THE CHAIRMAN OF THE CAMPAIGN FOR WEBB:

America's Most Unique College

We are just past the halfway point on this extraordinary voyage to secure an even stronger future for Webb Institute.

Last year I wrote about having completed sea trials and shakedown cruises with flying colors. I was optimistic about the remainder of the voyage and encouraged all to come on board. Results to date have exceeded even my sometimes unbridled expectations.

Planned gifts, pledges, and realized gifts of major proportions, bolstered by extraordinary results of our Annual Fund, have enabled the *Campaign for Webb* to comfortably exceed the ninety percent mark as we navigate towards our announced goal of \$40 million only halfway through our six-year effort. I suppose I should not be surprised. Exceeding expectations is a long-standing characteristic of the Webb culture and tradition. It has been a privilege for me to be a part of the *Campaign for Webb*, and our success to date is a tribute to all of you who have made it a reality.

I was pondering what to say in this note when I picked up the latest issue of *Forbes* magazine, noting an annual feature article on America's best colleges. In previous years I have written to *Forbes* trying to introduce them to America's Most Unique College, Webb Institute. To date my efforts have been unsuccessful. Clearly, this is one area where size does matter.

The *Forbes* list is comprised primarily of liberal arts and research universities with a few exceptions. All of the schools are well known and surely among the nation's best. One of *Forbes*' ranking criteria is what they describe as "Grateful Grads," which measures ten-year average gifts per enrolled student and percentage of alumni giving. Their ranking awards Princeton the number one slot with a ten-year average gift of \$29,330 and a participation rate of 47 percent. **Webb's comparable numbers are \$34,577 and 73 percent.** Only two schools have higher

average gift per student and none come even close to our participation rate, the highest being 53 percent and most in the 30 to 40 percent range. Webb truly deserves the description, America's Most Unique College.

The *Campaign for Webb*, while highly successful to date, still has a long way to go. As with any successful voyage, we will continue to move forward with care, diligence, and enthusiasm to insure that we reach and comfortably exceed our goal.

In these times of overwhelming debt, student debt specifically, Webb's model of providing each student a full-tuition scholarship is especially meaningful and vital. The primary goal of the *Campaign for Webb* is to reinforce the resources available to provide intergenerational continuation of this model while also providing funds to make significant improvements to our teaching facilities. The latter will include a new academic building incorporating state-of-the-art lecture and drawing room spaces and a new home for the Couch Computer Laboratory. Refurbishment of Stevenson Taylor Hall and dormitory spaces will improve operational efficiencies and add to enrichment of the Webb experience.

The vibrancy of Webb and our commitment to providing one of the finest and most comprehensive engineering educations to some of this country's best and brightest young people is an investment that will produce great returns for the future. To all who have already come onboard to make the voyage a success to date, you have my heartfelt gratitude. To those who have not yet completed their plans to fully participate in the *Campaign for Webb*, I urge you to join us and help to make this one of the major high points in Webb's long story of success.

The celebration at the end of the voyage will be one to remember—you don't want to miss it.

Through the *Campaign for Webb: America's Most Unique College*, Webb aims to raise **\$40 million** to enhance the college's programs, infrastructure, and financial resources to meet the growing challenges of an expanding marine industry. The response to the *Campaign* has been extraordinary to date—80% of Webb alumni have been joined by parents, Trustees and friends in making annual, major, and planned giving commitments totaling \$36.5 million!

CORNERSTONE DONORS

Our success would not be possible without the *Campaign's* Cornerstone donors. This elite group of Webb family members have made commitments of \$2,500,000 or more:



Arthur and Marilyn Burr '54

The Burrs are honorary members of the Campaign for Webb Cabinet.

"...There were many other instances when I was fortunate enough to be in the right place at the right time, but nothing compared to the good fortune of being able to get a great, and free, engineering education at Webb, all thanks to the generosity of William H. Webb."



Dr. John C. Couch (Honorary alumnus)

John is a member of the Campaign Cabinet.

John sees the *Campaign for Webb* as "crucial to allowing Webb to prepare students to understand, utilize and benefit from continuing advances in technology" and that is why he has made a Cornerstone level commitment to the *Campaign*.



Jon Couch (deceased)

Jon Couch had a love for boats and boating. He was a successful businessman, a skilled carpenter, aviator, and professional motorcycle racer, as well as an avid yachtsman. As a result of his family's maritime legacy, Jon left a generous gift for Webb in his estate.



Joseph J. Cuneo '57

Joe is Chairman of the Campaign for Webb and leads the Campaign Cabinet.

"I truly believe that making an investment in Webb is making an investment in the best, simply put – the best education, the most promising students, and the opportunity to make the greatest industry impact."



Harold "Gerry" F. and Marguerite Lenfest

Gerry Lenfest is an honorary member of the Campaign Cabinet.

"Alumni and friends of Webb should consider the *Campaign* a call to arms – to enhance the endowment and provide the funds needed to assure future students an education without the burden of tuition."



Dr. Peter Van Dyke '60

Peter is a Trustee Emeritus at Webb Institute.

"Webb taught me engineering skills of approximation and estimation that carried over into other endeavors where I found them extremely useful."

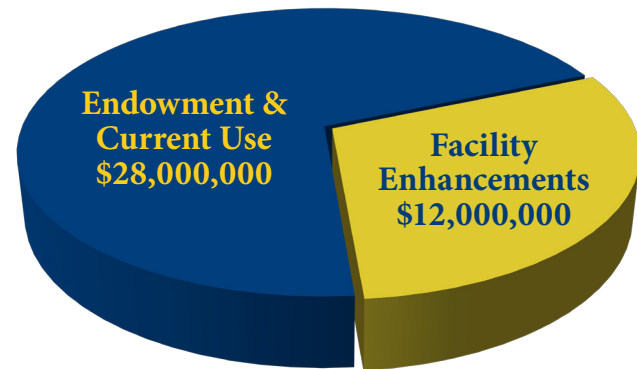


Alfred M. and Joyce Zeien '52

Alfred is a William Selkirk Owen Award recipient.

"My Harvard degree was important to my career, but it was Webb that made me the person I became."

Of the **\$40 million** Campaign goal, **\$28 million** will be raised to strengthen the endowment and ensure intergenerational sustainability of the full-tuition scholarship model, and **\$12 million** will be earmarked for facilities improvement, headlined by the new academic center and renovations to Stevenson Taylor Hall (STH).



The **\$40 million** goal represents a five-fold increase from the previous Campaign initiated in 2003.

The Campaign for Webb will need the support of every alumnus(a), trustee, parent, past parent, and friend to continue its successful path. Every dollar counts.

As the Campaign for Webb is a comprehensive effort, every dollar contributed from July 1, 2013 through June 30, 2019 counts toward the Campaign goal.

CORNERSTONE (\$2,500,000+)

Arthur A. and Marilyn Burr '54
John C. Couch (Hon.)
Jon Couch
Joseph J. Cuneo '57
Harold "Gerry" F. and Marguerite Lenfest
Peter Van Dyke '60
Alfred M. & Joyce Zeien '52

LEADERSHIP/YOUNG AMERICA (\$1,000,000 - \$2,499,999)

Richard A. Goldbach '58
McMullen Family Foundation
Philip J. Sims '71

GENERAL ADMIRAL (\$500,000 - \$999,999)

Herman D. Pollock Family Foundation
Joseph Mazurek (Hon.)
John W. Russell '67

OCEAN MONARCH (\$250,000 - \$499,999)

American Bureau of Shipping
Philip R. Faurot '51
Kenneth L. Heitner '64
Robert G. Mende '51
R. Keith Michel '73

BRISTOL (\$100,000 - \$249,999)

David M. Bovet '70
Drs. George and Mary Campbell
R. Perry Connell '97
The Dixon Family
Kenneth W. Fisher '64

Thomas W. Gillette '52
Alison and Hal Granger, P'14
James J. Henry '35
John A. Malone '71
Mark F. Martecchini '79
Gregory M. Matzat '89
MJS Foundation
John W. Newcomb '66
Richard Pomfret '62
Bruce S. Rosenblatt (Hon.)
Joseph A. Signorelli '54
The G. Unger Vetlesen Foundation
William duBarry Thomas '51
Anthony A. Urbanelli '75

CHINA (\$25,000 - \$99,999)

Paul and Julie Backas, P'16
William B. Bartling '13
Joseph L. Brennan '79
Richard C. Celotto '73
Crowley Maritime Corporation
Alexander Delli Paoli '50
Philip S. Douthit '72
S. Allen Face III '70
Fred H. Forrest
James N. Greenlees '72
William E. Jenkins
Stephen R. Judson '74
Ronald K. Kiss '63
Robert K. Kistler '46
Jennifer E. Kollmer '91
Charles Kurz II (Hon.)
Jon J. LaBerge '76
Maurice J. Laurier '50
Eric W. Linsner '70
David and Rebecca Louie, P'17
Thomas N. Manuel '54
Greggory B. Mendenhall
Brent J. Morrison '11
Richard P. Neilson '70
Jake M. Neuman '93
Jennifer B. Panosky '85
Joseph H. Pyne
Peter A. Silvia '62
The Society of Naval Architects & Marine Engineers
John A. Springer III '82

Steve M. Stone '06
David and Christine Stone, P'06
Luther Tai
Reuben W. Taylor, Jr. '55
Richard W. Thorpe '55
Michael W. Toner
TK Foundation/Orange County Community Foundation
John D. Van Buskirk '76
Peter F. Weber '74
Thomas A. Wheaton '77
W. Brett Wilson '75

DUNDERBERG (\$10,000 - \$24,999)

Benjamin B. Ackers '97
Christopher D. Allard '04
Paulo A. Almeida '95
Barbara L. Aster
George W. Birkhead '63
Robert H. Bolling '97
Thomas H. Bond '45
Judson B. Broome '91
Peter C. Bryn '06
Thomas S. Burns
Steven G. Buttner '70
Donald L. Caldera '57
Jay P. Carson '73
Lincoln D. Cathers '56 and Nancy Cathers
David S. Chapman '72
Louis T. Codega '78
Charles N. Corrado '83
John N. Costello, Jr. '89
Jerry W. Cuthbert '56
Lowell A. Dickerson '10
Mr. and Mrs. Timothy Dugan, P'17
Edward C. DuMont
John L.R. Edgar III '87
Brian P. R. Eisenhower '06
Courtney C. Ewing '05
Gabelli Foundation/Jewish Communal Fund
Peter A. Gale '59
Mr. and Mrs. Drew Gavel, P'16
Mr. and Mrs. Mark Gaylo, P'19
Jacob M. Genauer '10

George A. Gilmore '57
Richard A. Gilmore '77
Robert D. Goldbach '58
George P. and Jane Gross, GP'10
Christoph A. Grueneis '92
Margaret F. Harris
Theresa Haven '92
Paul W. Hayes '54
Robert J. Healy '83
Mark R. Henry '62
Christopher and Maria Herrel
Manuel G. Hontoria '88
D. Michael Hutchings '95
Peter A. Johnson '56
Ralph E. Johnson '68
Thomas E. Koster '67
Cody C. Kurtz '08
Horton W. Lain '55
Timothy S. Leach '91
Robert J. and Robin Licato, P'15
Endel Mann '60
Craig B. Martin '99
Justin H. McCarthy '55
Joel S. McMinn '75, P'09
Eugene R. Miller, Jr. '64
Eugene R. Miller III '96
Jack and Corrinne Mills, P'16
Wing and Sufinsa Ng, P'19
Ronald C. Olander '55
Steven Pagan '88
John R. Paul '69
Russell C. Pollock '08
Scott Richards '77
Joseph A. Schetz '58
Alfred H. Schwendtner '54
Ted A. Slotwinski '73
Richard A. Smith '03
David G. St. Amand '77
VADM Paul E. Sullivan
Matthew P. Tedesco '91
Philip Thiel '43
Thomas P. Tindale '10
Robert Turoff, P'15
Justin C. Van Emmerik '13
Vigor Industrial, LLC
Homer N. Wallin, Jr. PG'62
Steven F. Wolgamot '69
Charles Zeien '50
Anonymous (1)

Alfred M. Zeien '52:

Intelligence, Dedication, Integrity



Left: Alfred Zeien '52 with Joyce Zeien at the Webb Ring Dance.

Above: Alfred with Joyce after he received his William Selkirk Owen Award in 2013.

Alfred Michael Zeien was born on February 25, 1930, in Queens, NY. He was a quick learner. Both he and his older brother, Charlie, spoke French, and their father, being a cabinetmaker, made sure they could work with their hands. Al's performance throughout his school years was outstanding, and as he entered his senior year of high school, he faced the same decision many of us have – which college to attend. With full-scholarship offers from Harvard and MIT in hand, he chose Webb Institute of Naval Architecture, in part, perhaps, because Charlie (Class of 1950) was already there.

In August of 1948 the Class of 1952 met for the first time, 16 young men from varied backgrounds. Since this was soon after World War II, some members of the class were veterans and therefore older, while at least one was only 16 years old. They would pick up one additional classmate during their sophomore year and would be the first class to spend all four years on the Glen Cove campus. They graduated nine.

At the time, the students were helping to convert the Pratt mansion into an institute of higher learning, so

Beaver Days were long and frequent. The class developed very strong ties. *Alfy*, as his classmates called him, was first in his class. This was not something anyone in the class dwelled upon, and when one recruiter came to talk to the class about permanent employment, he asked the students about their class rank. No one answered and no one went to work for that company.

During their senior year, Professor Nevitt, in an effort to give the class some culture, took them into Manhattan for an evening at a nice steak house. Over drinks Al declared to Professor Nevitt that he expected to be Chairman of General Motors at 36. Professor Nevitt replied, "Really now Al, I always dreamed of settling down in a small vineyard of my own in France with a young mistress." The class dismissed both their comments.

Al decided that upon graduation he would work for Sea Beaver, a small company in Greenwich, CT, building minesweepers for the Korean War. It was during this time that Al married Joyce Lawrence, whom he had been dating throughout his years at Webb. Together they have

three accomplished children and five grandchildren, and live in their lovely home of 26 years in Woods Hole, MA.

After Sea Beaver, Al went to the Harvard Business School, graduating with his MBA in 1955. He then joined the General Dynamics Electric Boat yard in Groton, CT, where he was chief estimator and at 28, became sales manager. During this time, he was responsible for representing E.B. in negotiating all submarine contracts with Admiral Hyman Rickover in Washington, D.C. At 33, he was at General Dynamic's Manhattan headquarters in charge of mergers and acquisitions where he learned some Wall Street lessons. He had three years left to fulfill his proclamation of becoming Chairman by the age of 36. In 1964, General Dynamics bought the Quincy Shipyard from Bethlehem Steel, and Al at 34 became the head of operations at Quincy with 8,000 employees.

In 1968 Gillette bought Braun and hired Al as its General Manager to start an international division. The Zeiens moved to Germany. Al returned to Gillette in Boston in 1973 as Group VP in the Diversified Companies operation, but in a year returned to Germany as Chairman of Braun to stem red ink there. Colman Mockler was Chairman of Gillette, and he brought Al back to Boston in 1978 as Senior VP for technical operations. Al retooled the South Boston plant, doubling output, and played a pivotal role in developing the Sensor brand of razors. In 1981 Al was elected Vice Chairman for technical operations and new business development. In 1984, he negotiated the purchase of Oral-B.

In the fall of 1986, Mr. Mockler assigned Al to head the "A" team response to a hostile takeover attempt by a corporate raider. With Al playing a key role, the team successfully fended off the takeover attempt.

In late 1987 Mr. Mockler announced a major management reorganization. Al Zeien was named Vice Chairman to head International/Diversified. This position involved the traditional businesses in the fast growing European segment and included Braun, Oral-B, and Jafra products. In late 1990, Mr. Mockler announced his intention to retire at the end of 1991, choosing Al Zeien as President/COO effective January 1, 1991. Two months later, Mr. Mockler unexpectedly died of a heart attack and on February 21, 1991, the Gillette Board declared Al Chairman and CEO.

Al took command and instilled a sense of urgency to do things faster and accelerate globalization. In 1990 66% of sales and profits came from outside the U.S. By 1996 70% of sales and 72% of profit came from outside the U.S. The proportion of total sales from Gillette products that were worldwide leaders in their markets grew from 55% in 1990 to 81% in 1996. Al insisted on an increased rate of new-product introduction and asked his senior managers to get out of Boston and move frequently around the world. He scheduled himself for

one international trip per month.

Under Al, Gillette's mission was to achieve or enhance clear leadership, worldwide, in the existing or new core consumer product categories in which Gillette chose to compete and acquired such well-known companies as Parker Pen and Duracell. During his tenure, Gillette became a member of the Fortune 500 companies. When he stepped down as Chairman in 1999, Al foresaw further growth in India, China, and Russia and sounded much like the man his classmates knew him to be.

Al has served on the boards of many companies and institutions, including the Bank of Boston, EMC, Inverness Medical Innovations, Massachusetts Mutual Life, Polaroid, Raytheon, the Boston Museum of Science, and as Chairman of the World Affairs Council of Boston.

Although his career took him away from the marine industry, Al never deserted Webb and his classmates. He and Joyce delighted in the annual reunions of the Class of '52 where the old bonds remained strong and hosted several of them in their home. Their generosity to Webb includes the establishment of the *Alfred M. Zeien Lecture Series* in 2000, a program which has allowed a wide variety of talented people to share their experience with Webb students; the establishment of the *Dr. and Mrs. Alfred M. Zeien '52 Student Scholar Endowment*, which subsidizes the full cost of tuition and provides a student with \$2,500 toward room-and-board expenses; and, a Cornerstone Gift to the current *Campaign for Webb*, which is projected to address infrastructure improvements. For its part, Webb has recognized Al's beneficence and outstanding career with the award of an Honorary Doctor of Science degree in 1997. The Alumni Association also honored Al with the William Selkirk Owen award in 2013. This award is the Alumni Association's highest honor and is presented to a graduate in recognition of outstanding achievement and service to the profession and his/her Alma Mater each year.

Al feels that his time at Webb was the most fruitful of his life, establishing lifelong friendships, instilling a strong work ethic, and providing an outstanding education.

He is dedicated to Webb's continuing to provide the same opportunity to deserving students for years to come. He once told Webb President Keith Michel: "My Harvard degree was important to my career, but it was Webb that made me the person I became."

Al Zeien is a man of intelligence, dedication to principle, and integrity. Some career. Some life. Some man.

- by Richard P. Neilson '70



Planning Committee Chair Dave Bovet '70 led a group of trustees, faculty, staff, students, and alumni in deliberations on what infrastructure enhancements are needed at Webb. This committee held numerous meetings and teleconferences over a twelve-month period. The group found that the existing classrooms, designed in the 1940s, are cramped and provide inadequate technological capabilities for today's educational needs—this hinders Webb's ability to be competitive in recruitment of faculty and students. Additional space is needed for the Couch Computer Lab, team rooms, and faculty offices. Webb's existing facilities are packed to their practical limit. Based on these findings, the consensus of the Board of Trustees at its May 2016 meeting was to build a new academic building on the Webb campus and later repurpose the classrooms in Stevenson Taylor Hall to dormitory space. The renovation of Stevenson Taylor Hall will enable all students to be housed on the 2nd and 3rd decks.

Webb commissioned two architectural firms, Bentel & Bentel and Peter Gisolfi Associates, to investigate potential site locations and prepare conceptual designs of the new Academic Center. Both firms have extensive experience in the design of educational facilities, and both have demonstrated an ability to blend innovative solutions consistent with contemporary pedagogical demands while honoring the historical context of the existing campus.

The architects were asked to design for our current class size—a maximum freshmen class of 28. This was an outcome of Board deliberations where it was decided that our historically small class size is a key element of Webb's unique and effective educational experience. We requested work studios, similar to our current classrooms, with space for large drawing boards for each student, and a contiguous lecture hall with retractable partitions allowing for separation from the work studio. Team rooms to facilitate collaborative project work and lounge space to encourage intermingling of all students to be incorporated into the Academic Center.

The work studio for each class will be approximately the size of the current classrooms. The lecture hall for each class will be approximately the size of the Advanced Learning Center, located in the Luckenbach Graduate Center. The space will be outfitted with reconfigurable tables and chairs, modern whiteboards, interactive digital displays, and audio visual aids.

An Academic Center Committee was established to work with the architects and recommend a preferred option to the Board of Trustees. The two architectural firms came to Webb in September and presented their slate of ideas to the Academic Center Committee. That evening, each firm made a one-hour presentation to students, faculty, and staff. The presentations were recorded and distributed to alumni and other members of the Webb community.



Comments were solicited from alumni, faculty, staff and students. Forty of the forty-five students who responded expressed a preference for the 2nd terrace site (option 2). The 2nd terrace site was the preference of a majority of alumni, although others liked the two-building concept opposite Luckenbach Courtyard (option 1). The mirrored wing of the library also garnered support. The concept

The firms proposed many creative solutions, giving us much to consider. Proposed concepts include:

1. **Opposite Luckenbach Courtyard:** Consisting of two buildings connected to Stevenson Taylor Hall via a glass elevated walkway through the Tea Room and into Rosenblatt Gallery. This plan creates a traditional quad arrangement between the new building and Stevenson Taylor Hall.
2. **On 2nd Terrace:** Consisting of a pair of one-story buildings located on either side of the second terrace behind Stevenson Taylor Hall; green roofs flush with the first terrace; transverse passage incorporating the brick wall between the 1st and 2nd terraces; and, windows facing the Long Island Sound. The Academic Center connects to Stevenson Taylor Hall via the passageways adjacent to the James J. Henry Auditorium.
3. **Opposite Luckenbach Courtyard:** Consisting of one larger building connected to the Rosenblatt Gallery.
4. **Mirror of Library:** Located opposite from the library on the upper terrace with matching façade along the terrace and work studios/ lecture halls extending towards Thorpe Field.
5. **Straddling Main Driveway:** Consisting of two buildings located in front of Stevenson Taylor Hall and connected via a glass walkway above the main driveway. A traditional quad arrangement is created bounded by the Stevenson Taylor Hall, the Alumni Gymnasium, the Robinson Model Basin, and the proposed Academic Center.
6. **Adjacent the Alumni Gymnasium:** A single two-story building located in way of the tennis courts, with the main entrance on the front lawn area.
7. **Opposite the Luckenbach Graduate Center:** A single three-story building located in the meadow in front of and across the road from the Luckenbach Graduate Center.
8. **In way of Motley Hall:** A single two-story building located in way of Motley Hall.

of a building in front of Stevenson Taylor was not well received by students or alumni, with both groups stating a desire to maintain the iconic view as one approaches Stevenson Taylor Hall. The input of alumni and students has been an invaluable part of the process, as the Committee and the Board deliberated on the preferred site and building arrangement.

Taking into consideration the recommendations of the Academic Center Committee, the Board of Trustees narrowed the selection to two designs at its October 2016 meeting:

Option 1

(by Gisolfi Associates)

A pair of two-story buildings opposite Luckenbach Courtyard (figures 1 and 2)



Figure 1: Option 1, Luckenbach Courtyard Rendering, Aerial View



Figure 2: Option 1, Luckenbach Courtyard, View from Quad

Option 2

(by Bentel & Bentel)

One-story buildings located on either side of the 2nd terrace (figures 3 and 4)

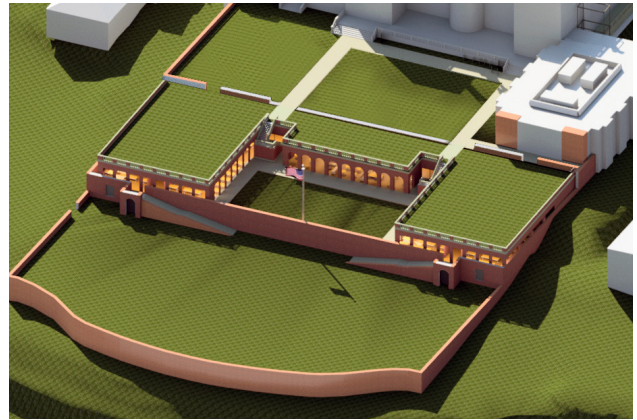


Figure 3: Option 2, Rendering of 2nd Terrace Academic Center



Figure 4: Option 2, 2nd Terrace Academic Center, Student Lounge Area

Although the Committee liked aspects of the mirrored library wing concept, the increased cost associated with reconfiguring the dining rooms to allow for suitable access into Stevenson Taylor Hall was the principal reason for eliminating this option.

The next step in this process is to refine the two concept designs and cost estimates. The Board intends to make a final selection on the site and building arrangement at a special meeting of the Board, likely in December. Upon concept selection, we will engage the architect firm to prepare design drawings. The intent is to bid the project in the winter of 2017 and begin construction in the early spring of 2018 with a target completion date in time for the 2019 fall semester.

We are indebted to the major contributors to this project: The Couch family and Al '52 and Joyce Zeien. As you know, major infrastructure enhancements at Webb are few and far between. We can look back at the construction on the Bronx campus by William Webb in the 1890s; the acquisition of the Glen Cove Campus in 1947 and construction of the Alumni Gymnasium, Robinson Model Basin, and Luckenbach Graduate Center buildings; and, the construction of the library/auditorium in 1973, as a relatively short but impactful list of infrastructure changes at Webb.

This project will be transformational for Webb and demonstrates our continued commitment to academic excellence.

- by R. Keith Michel '73



Matthew Werner '95, PG'97

Dean & ABS Chair of Naval Architecture
& Marine Engineering

A MESSAGE FROM THE DEAN:

The Webb Classroom for the Next 50 Years

Nothing more clearly illustrates Webb's unique educational model than the four classrooms housed in the wings of Stevenson Taylor Hall.

Webb's classroom arrangement never fails to elicit quizzical looks from guests visiting the campus for the first time when they are told that the students stay in place and the faculty swap in and out every hour. Sometimes the response goes something like, "You mean like in elementary school?" In the current iteration of Webb's culture, these spaces serve as more than just a place where classes are held between 9:00 AM and 3:00 PM every weekday. The classrooms serve as work studios where students work collaboratively to tackle Webb's famous (or is it infamous) workload. These days it is rare for one to find a desk in a dorm room much less students working there. When students are not toiling away at their drawing tables, now each occupied by two or three large computer monitors, they are sleeping, gaming, or just conversing about the topic of the moment in the

makeshift lounges that seem to sprout up organically in the middle of each classroom. It is not an exaggeration to say that if you drop by the campus anytime, day or night, during the school year you will find the lights on in the classrooms. That is even with occupancy sensors installed to prevent the lights being left on when the room is empty.

In many ways the classrooms appear basically unchanged since Webb moved to Glen Cove in 1947. The faculty still write notes on real chalk boards in front of students seated in very small desks crowded at the front of the room. However, change has occurred in a number of areas. Over the last fifteen years LED projectors and motorized screens paired with laptops and document cameras have been added to bring the digital age to the spaces. The installation of air conditioning and wireless networking have added to the comfort and convenience to the students' "real" home while on campus. While this merging of old and new creates an interesting contrast, the classrooms have limitations which are exacerbated with freshman class sizes reaching 28 students.



Classroom set-up for the class of 1955.

Teaching is an evolving vocation in which new methods and technologies are regularly introduced and sometimes reintroduced. Some of these “new ways” are fads that seem to disappear faster than they appeared. Others, laptops and digital projectors come to mind, can change the manner in which information is conveyed. Some argue that the traditional teaching model of the “sage on the stage” is limited and fails to serve the needs of modern students. There are entire journals and conferences dedicated to teaching methods, classroom engagement, and the implementation of technology in the classroom. Unfortunately, the arrangement and size of Webb’s existing classrooms do limit teaching approaches and technologies that can be employed on a daily basis.

The *Campaign for Webb* has presented the opportunity to rethink the Webb classroom as part of the planned infrastructure improvements. The approach has been to focus on the classrooms, as they are the center of the Webb educational experience. The new arrangement under consideration addresses the limitations of the existing classroom, supports the ways in which the classrooms are currently being used, and allows for the incorporation of new teaching methods and technologies to be used now and into the future. The new classroom concept incorporates a lecture room and design studio separated by a moveable partition for each class. This approach maintains the individual design stations that are the student’s academic home base while creating a modern, spacious, reconfigurable lecture space for each class. The ability to partition the lecture space from the design studios allows the lecture spaces to be used while the design studios are occupied, thereby supporting off-hour elective classes and providing additional quiet study and meeting space. A larger footprint, increased board space, distance learning technologies, improved digital displays, and moveable furniture will make the new lecture rooms a significant upgrade over the cramped front of the classroom and small tablet desks currently in use. Placing common spaces and small team/breakout rooms in close proximity to the



The Advanced Learning Center features several up-to-date technologies like videoconferencing equipment and modular furniture in the Luckenbach Graduate Center.

classrooms will create the opportunity for cross-class interaction throughout Webb’s 24-hour academic days. Furthermore, the new facilities will be better able to support new activities and endeavors such as Webb’s newly established Summer Engineering Academy.

The development of these new classrooms will greatly improve Webb’s academic infrastructure and enhance the achievement of Webb’s mission. These improvements will make a strong statement about how Webb values our undergraduate program and our collaborative educational model. Modern, well equipped, and appointed classrooms will allow Webb to continue to offer a premier undergraduate educational experience into the future. The look, feel, and functionality of the new classrooms will stand out among our peer institutions and will benefit our efforts to continue to recruit the best students and future faculty. Much has changed since 1947, and it is the right time for Webb to invest in the modern teaching and learning spaces that will carry the institution’s history of excellence forward into the next 50 years and beyond.



Freshman classroom



JAKE M. NEUMAN '93
Chairman of the Webb Alumni Fund

Modern-day Record Participation!

The 2015-16 Webb Alumni Fund (WAF) exceeded expectations AGAIN!

Contributions were \$1,888,689 exceeding last year's amount by \$341,610 (22%) and our 2015-2016 goal by 28%. The average gift increased to \$2,295 (up 17%).

Participation was **record-setting** this year at 76.3% for Alumni and 73.5% for the Alumni Association overall. Congratulations to all who were a part of this year's success; for those who couldn't give this year, we look forward to your participation in the 2016-17 WAF. I owe a special thanks to the dedication of the Class Agents and Group Leaders who really are the key liaisons to the Alumni

Association base.

We can't mention the WAF success without noting the achievements and efforts of the comprehensive *Campaign for Webb*. The successes are purposely interdependent. The momentum we've previously established in the Alumni Fund has been and will continue to be critical to the success of the *Campaign for Webb*. The *Campaign* was publicly launched on September 10, 2015. Every dollar contributed to Webb from July 1, 2013 through June 30, 2019, including your Alumni Fund gifts, counts toward the comprehensive *Campaign for Webb*. The contribution and participation levels illustrate the strong commitment the Alumni Association

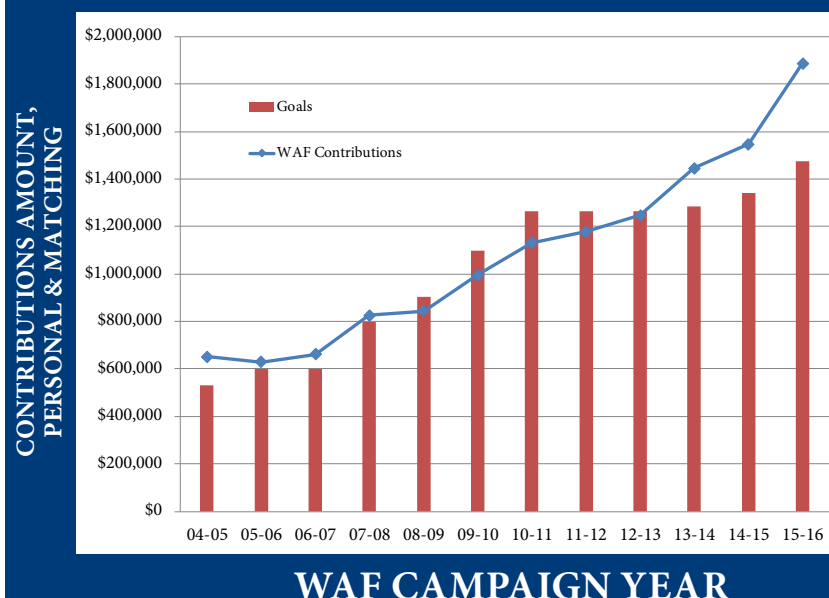
has to Webb's achieving its financial goals.


Twenty classes achieved 100% participation, which is inspirational: '44b, '48, '49, '52, '53, '54, '55, '59, '60, '67, '69, '70, '95, '05, '07, '09, '11, '13, '15, and '16. I would like to point out that the class of 1995 is the first class of this decade to feature 100% participation in quite some time. Congratulations to all of you!

Last but not least, I'd like to change tracks a little bit. Filling the shoes of John Malone '71 was a task I did not take lightly. The commitment is significant but I have to say that I am glad I have taken on the position. Not only is it an effort that I fully stand behind, it is one that the grand majority of alumni, honorary alumni, friends, and family stand behind as well. That is by far the most rewarding part of being the WAF chairman. Serving as Chair reminds me of what I enjoyed most about Webb, the tight sense of community. I have connected with so many of you and apologize to those with whom I have not yet had the opportunity to do so. As you can imagine, getting to know 1100+ people is a monumental task, but one I face with enthusiasm. The class agents, group leaders and I, are here to urge you to be a part of the Alumni Association. Sometimes the gentle reminders turn into urgent reminders (Webb grads never got extra credit for turning things in early), but nevertheless it's personally rewarding to see the Alumni Association support the school in such significant ways.

See you at Homecoming!

WAF Campaign Contributions vs. Goals



Alumni Association Executive Committee	Alumni Regional Coordinators	Webb Group Leaders
President: Jennifer Kollmer '91	Northern New England: Russ Hoffman '74	1948-1957: Victor "Pete" W. Bethge '53, GP'05
Vice President: Peter K. Wallace '93	Southern New England: Doug Slocum '10	1958-1964: Roger H. Compton '61, PG'64
Secretary: Ian Mutnick '96	New York: Andrew Lum '12	1965-1971: Eric Runnerstrom '69
Treasurer: Victoria Dlugokecki '88	Dist. of Columbia/Northern Virginia: Kathleen Cain Minnich '07	1972-1979: Anthony A. Urbanelli '75
Fifth Member: Sean Murphy '13	Maryland: Jennifer Waters '91, P'20	1980-1988: Jennifer B. Panosky '85
Sixth Member: Jennifer R. Ryan '99	Southern Virginia: Jennifer Ryan '99	1989-1997: Jake M. Neuman '93
Alumni Fund Chairman: Jake M. Neuman '93	Texas: Erin McElroy '15	1998-2005: Jason Updegraph '01
Past President: Matthew Tedesco '91	Northern California: Cameron Baker '07	2006-2015: Stefan Wolczko '09
Historian: Matthew R. Werner '95 & PG'97	Pacific North West: Jared Harlan '12	 <p>Group Leader Stefan Wolczko '09 with Class Agent Colin Spillane '13</p>
Members at Large: Spencer Schilling '82; Joe Signorelli '54; Anthony Urbanelli '75	Southern California: John Carlson '14	
Audit Committee: Dane Hendrix '84; Sarah Wickenheiser '08	Southern Florida: Niko Martecchini '09	
Nominating Committee: Steve Pagan '88; Richard Kim '11	Netherlands: Leah Sosa '08	

Class Agents

1944B Edmund T. Klemmer	1971 Paul G. Vibrans	1996 Eugene R. Miller III
1945 Thomas H. Bond	1972 David S. Chapman	1997 Robert Bolling
1948 Arthur W. Schmidt	1973 Richard C. Celotto	1998 Christopher Swanton
1949 John J. Slager	1974 Peter F. Weber	1999 Bradley D.M. Golden
1950 J. Niel Spillane	1975 Anthony A. Urbanelli	2000 Andrew W. Polay
1951 George Philips	1976 John D. VanBuskirk	2001 Jason P. Updegraph
1952 Gabriel F. Lefebvre	1977 Richard A. Gilmore	2002 Douglas H. Frauenberger
1953 Winston B. Sutter	1978 Neil J. Gallagher	2003 Andrew J. DeSpirito
1954 Paul W. Hayes	1979 Mark F. Martecchini	2004 Katherine A.C. Munkenbeck
1955 Horton W. Lain	1980 C. Kent Greenwald	2005 Matthew B. Zahn
1956 Peter A. Johnson	1981 Ivan N. Kirschner	2006 Steven M. Stone
1957 George A. Gilmore	1982 Mark W. Gagnon	2007 Kathleen Cain Minnich
1958 Raymond S. Hall	1983 Robert J. Healy	2008 Leah R. Sosa
1959 Edward C. Shope	1984 Bill R. McEachen	2009 Jonathan H. Dowsett
1960 Roderick A. Barr	1985 Jennifer B. Panosky	2010 Jacob M. Genauer
1961 Roger H. Compton	1986 William M. Milewski	2011 Lidia Needham
1962 Richard Pomfret	1987 John L. R. Edgar III	2012 Stephen Guglielmoni
1963 George W. Birkhead	1988 Steven Pagan	2013 Colin T. Spillane
1964 Eugene R. Miller, Jr.	1989 Gregory M. Matzat	2014 David S. Smith
1965 Lawrence Krantz	1990 Patrick J. Goss	2015 Satchel B. Douglas
1966 John W. Newcomb	1991 Matthew P. Tedesco	2016 Dylan M. Froriep
1967 John W. Russell	1992 Theresa Haven	PG'61-PG'68 Capt. Edmund C. Mortimer
1968 John F. O'Dea	1993 Jake M. Neuman	PG'99 Yongjun "Dan" Chen
1969 Eric Runnerstrom	1994 Brian M. Mulligan	
1970 Eric W. Linsner	1995 D. Michael Hutchings	

2015-2016 Webb Alumni Fund Class Giving Summary

Class	Total Gifts	# of Donors	# Living Alumni	Participation	Average Gift
Honorary	\$41,020	12	29	41%	\$3,418
1939	\$0	0	1	0%	\$0
1941	\$600	1	2	50%	\$600
1942	\$0	0	1	0%	\$0
1944A	\$0	0	1	0%	\$0
1944B	\$1,200	1	1	100%	\$1,200
1945	\$5,000	1	3	33%	\$5,000
1946	\$100	1	2	50%	\$100
1947	\$0	0	3	0%	\$0
1948	\$1,200	2	2	100%	\$600
1949	\$3,400	3	3	100%	\$1,133
1950	\$37,827	5	7	71%	\$7,565
1951	\$3,800	4	7	57%	\$950
1952	\$140,110	5	5	100%	\$28,022
1953	\$8,900	8	8	100%	\$1,113
1954	\$134,874	7	7	100%	\$19,268
1955	\$56,874	13	13	100%	\$4,375
1956	\$15,040	8	9	89%	\$1,880
1957	\$26,224	8	11	73%	\$3,278
1958	\$10,815	11	12	92%	\$983
1959	\$9,000	9	9	100%	\$1,000
1960	\$21,830	10	10	100%	\$2,183
1961	\$12,796	8	10	80%	\$1,600
1962	\$41,973	10	13	77%	\$4,197
1963	\$24,836	15	16	94%	\$1,656
1964	\$123,289	6	11	55%	\$20,548
1965	\$3,825	8	9	89%	\$478
1966	\$80,831	11	16	69%	\$7,348
1967	\$29,436	15	15	100%	\$1,962
1968	\$6,500	6	10	60%	\$1,083
1969	\$16,162	10	10	100%	\$1,616
1970	\$41,390	17	17	100%	\$2,435
1971	\$13,657	4	10	40%	\$3,414
1972	\$36,920	16	17	94%	\$2,308
1973	\$79,668	17	20	85%	\$4,686
1974	\$49,094	8	10	80%	\$6,137
1975	\$45,835	18	21	86%	\$2,546
1976	\$15,875	9	14	64%	\$1,764
1977	\$44,525	18	21	86%	\$2,474
1978	\$20,814	11	16	69%	\$1,892
1979	\$53,988	9	16	56%	\$5,999
1980	\$5,575	11	17	65%	\$507

Class	Total Gifts	# of Donors	# Living Alumni	Participation	Average Gift
1981	\$1,750	4	8	50%	\$438
1982	\$19,885	15	20	75%	\$1,326
1983	\$22,317	7	16	44%	\$3,188
1984	\$3,965	5	12	42%	\$793
1985	\$10,456	13	21	62%	\$804
1986	\$1,600	7	19	37%	\$229
1987	\$13,675	16	20	80%	\$855
1988	\$24,729	11	18	61%	\$2,248
1989	\$32,072	11	16	69%	\$2,916
1990	\$4,300	7	15	47%	\$614
1991	\$31,400	12	18	67%	\$2,617
1992	\$10,975	8	16	50%	\$1,372
1993	\$21,925	13	16	81%	\$1,687
1994	\$4,000	3	18	17%	\$1,333
1995	\$15,176	14	14	100%	\$1,084
1996	\$15,073	13	16	81%	\$1,159
1997	\$34,859	17	19	89%	\$2,051
1998	\$11,010	13	19	68%	\$847
1999	\$15,575	10	21	48%	\$1,558
2000	\$4,650	8	14	57%	\$581
2001	\$7,010	15	17	88%	\$467
2002	\$8,069	11	17	65%	\$734
2003	\$10,700	6	16	38%	\$1,738
2004	\$19,230	8	15	53%	\$2,404
2005	\$10,390	10	13	77%	\$1,039
2006	\$49,607	11	11	100%	\$4,510
2007	\$12,011	20	20	100%	\$601
2008	\$22,825	23	24	96%	\$992
2009	\$22,463	18	18	100%	\$1,248
2010	\$33,071	21	22	95%	\$1,575
2011	\$41,053	21	21	100%	\$1,955
2012	\$12,575	19	20	95%	\$662
2013	\$29,061	16	16	100%	\$1,816
2014	\$6,005	14	15	93%	\$429
2015	\$15,914	20	20	100%	\$796
2016	\$2,485	19	19	100%	\$131
PG'51-'60	\$1,440	6	12	50%	\$240
PG'61-'68	\$13,545	7	17	41%	\$1,935
PG'97-'99	\$500	1	4	25%	\$500
Exchange Students	\$210	3	15	20%	\$70
Non-Graduates	\$6,330	11	17	67%	\$618



Regional Events:

Charting the Course for Webb!

Through joint efforts of the Webb administration and the Webb Alumni Association, the winter of 2016 saw a wonderful series of regional “State of Webb” events around the globe.



A total of eighteen gatherings in the continental United States including one in Europe reinvigorated the Webb Family spirit, with participation by alumni, faculty, trustees, administration, parents (both

current and past), friends of Webb, and even a few prospective Webbies with family members. In total, 474 members of the Webb family and 267 alumni attended the regional events.

President Keith Michel attended every event in the U.S. (and participated in the Rotterdam gathering via web conference) and was often joined by Mrs. Michel, Dean Matthew Werner, and Director of Development, Anthony Zic, to present the theme of “Charting the Course for Webb.” The formal presentation included updates on a variety of topics including student life; faculty, curriculum and accreditation; governance at Webb; infrastructure enhancements; the success of the 2015 Annual Fund; the *Campaign for Webb*; the status of Webb’s finance and

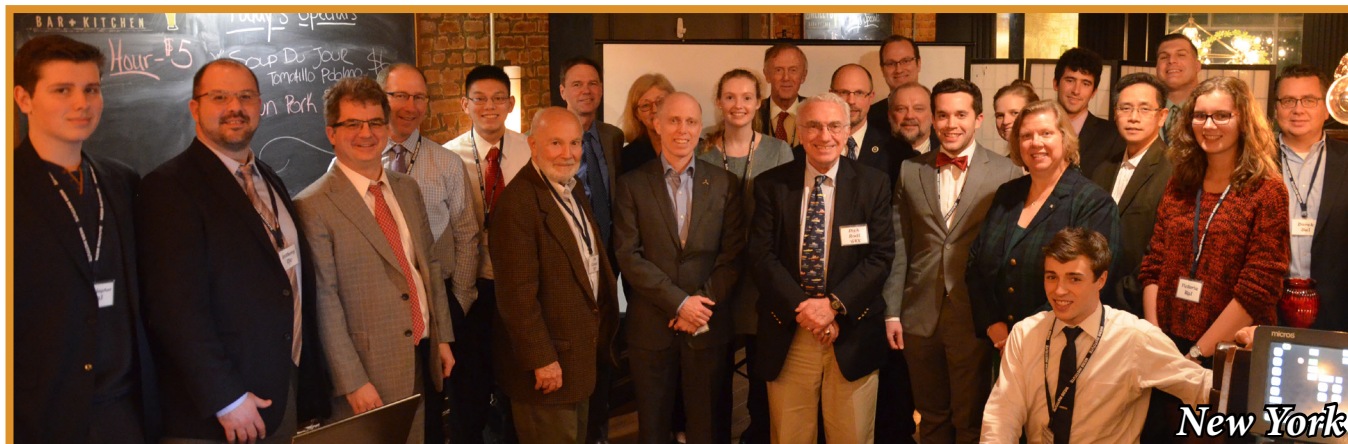
investments; and Webb’s future. These presentations were received enthusiastically and in a manner in which they were intended—eliciting round-table discussions from a wide range of viewpoints and opinions.

These gatherings were the result of extensive planning and, in many cases, generous donations of time and money by Webb family members who wanted to afford the opportunity for alumni, family, and friends to gather in an informal setting to reconnect and learn more about the future course for Webb.

Though a timeline has not yet been set, many have voiced a desire to have such events in the future. Most agreed that five years between regional gatherings was far too long! Stay tuned...

- by Jen Kollmer '91





Many thanks to those who gave their time, energy, and funding to bring about these spectacular events in 2016:

- January 15: John Carlson '14 hosted dinner at Fiddler's Green in San Diego, CA.
- February 4: Dinner at The Apprentice School in Newport News, VA, was hosted by Jennifer Ryan '99.
- February 5: John Russell '67 sponsored and hosted a dinner at the Multnomah Athletic Club in Portland, OR.
- February 6: Dinner at Ivar's Acres of Clams in Seattle, WA, was hosted by Jared Harlan '12 and Stefan Wolczko '09.
- February 10: Niko Martecchini '09 hosted a dinner at Bistro Mezzaluna in Fort Lauderdale, FL.
- February 12: Chick Corrado '83, President of Applied Physical Sciences (APS), sponsored and co-hosted the event with Jennifer Panosky '85. The event took place at APS in Groton, CT.
- February 12: Mark Martecchini '79 and Leah Sosa '08 hosted and sponsored a dinner at the Martecchini residence in Rotterdam, The Netherlands.
- February 13: Dinner at the Vine Brook Tavern in Lexington, MA, was hosted by Doug Slocum '10.
- February 17: Dinner at the Petroleum Club in Houston, TX, was hosted by Erin McElroy '15.
- February 19: Jennifer '91 and Tom '89 Waters hosted dinner at the US Naval Academy in Annapolis, MD.
- February 20: Kathleen Cain Minnich '07 hosted dinner at Fiona's Irish Pub in Alexandria, VA.
- February 23: Spencer Schilling '82 hosted dinner at the Pasta Pelican Restaurant in Alameda, CA.
- March 11: Dinner at the Venice Yacht Club, in Venice, FL, was hosted and sponsored by Board member Luther Tai.
- March 12: Russ Hoffman '74 hosted dinner at the Kennebec Tavern in Bath, ME.
- March 15: Dinner at O'Reilly's Bar and Kitchen in New York City was hosted by Andrew Lum '12.
- March 19: Gene Schorsch '52 hosted dinner at Brio in Denver, CO.
- April 15: Dinner was held at Lambeau Field in Green Bay, WI. Mark Pudlo '87 and Seacraft Design, LLC helped offset the costs of the event.
- April 16-17: Paul Vragel '72 hosted the weekend alumni gathering at the Chicago Maritime Festival, held at the Old Town School of Music, with dinner at Gather Restaurant in Chicago, IL.

2015-2016 Donations - Webb Honor Roll Donors/William H. Webb Society

In the pages that follow, we acknowledge all of our donors in the Webb community for their generosity and loyalty—alumni, trustees, friends, parents of alumni and students, family, faculty, staff, students, foundations, and corporations. Thank you for your continued support of Webb. Your giving has a profound impact on every student, faculty member, facility and program.

Visionary \$100,000+

American Bureau of Shipping
Arthur A. Burr '54
John C. Couch D.C.S. (Hon.)
Jon Couch
Kenneth L. Heitner '64
McMullen Family Foundation
Philip J. Sims '71
Alfred M. Zeien '52

Guardian \$50,000 to \$99,999

William E. Jenkins
R. Keith Michel '73
John W. Newcomb '66
Joseph H. Pyne
The G. Unger Vetlesen Foundation

Pacesetter \$25,000 to \$49,999

Cumberland Gas, Inc.
(Dixon Family)
Thomas W. Gillette '52
Alison and Hal Granger, P'14
Mark F. Martecchini '79
Richard Pomfret '62
Bruce S. Rosenblatt (Hon.)
Steve M. Stone '06
Anthony A. Urbanelli '75
Peter F. Weber '74
Thomas A. Wheaton '77

Benefactor \$10,000 to \$24,999

Christopher D. Allard '04
Paul and Julie Backas, P'16
William B. Bartling '13
David M. Bovet '70
Joseph L. Brennan '79
Peter C. Bryn '06
Drs. George and Mary Campbell
Richard C. Celotto '73
David S. Chapman '72
R. Perry Connell '97
Crowley Maritime Corporation
Joseph J. Cuneo '57
Alexander Delli Paoli '50
Kenneth W. Fisher '64
Gabelli Foundation

Paul W. Hayes '54
Robert J. Healy '83
Manuel G. Hontoria '88
Robert K. Kistler '46
Jennifer E. Kollmer '91
Thomas E. Koster '67
Maurice J. Laurier '50
David and Rebecca Louie, P'17
John A. Malone '71
Thomas N. Manuel '54
Craig B. Martin '99
Gregory M. Matzat '89
Greggory B. Mendenhall
Wing and Sufinsa Ng, P'19
John A. Springer III '82
David and Christine Stone, P'06
Luther Tai
Reuben W. Taylor, Jr. '55
The Society of Naval Architects
& Marine Engineers
Richard W. Thorpe '55
The TK Foundation/Orange
County Community Foundation
Peter Van Dyke '60
Homer N. Wallin, Jr. PG'62

Patron \$5,000 to \$9,999

Benjamin B. Ackers '97
Paulo A. Almeida '95
Barbara L. Aster
George W. Birkhead '63
Thomas H. Bond '45
Judson B. Broome '91
Thomas and Susan Burns, P'08
Louis T. Codega '78, P'14
Charles N. Corrado '83
John N. Costello, Jr. '89
Lowell A. Dickerson '10
Philip S. Douthitt '72
Timothy and Jeannine Dugan, P'17
Edward C. DuMont
Brian P. R. Eisenhower '06
Courtney C. Ewing '05
S. Allen Face III '70
Richard and Marylou Ferrieri, P'11
Drew and Cindy Gavel, P'16
Mark and Kym Gaylo, P'19
Jacob M. Genauer '10
George A. Gilmore '57
Bryan and Lisa Green, P'18
James N. Greenlees '72
Jacques B. Hadler (Hon.)
Peggy Harris

Theresa Haven '92
Ronald K. Kiss '63
Charles Kurz II (Hon.)
Jon J. LaBerge '76
Timothy S. Leach '91
Gabriel F. Lefebvre, Jr. '52
Eric W. Linsner '70
Richard and Gloria
Loncharich, P'19
Endel Mann '60
Eugene R. Miller, Jr. '64
Eugene R. Miller III '96
Brent J. Morrison '11
Richard P. Neilson '70
Jake M. Neuman '93
Clarence O'Connor '15
Ronald C. Olander '55
Steven Pagan '88
Jennifer B. Panosky '85
John R. Paul '69
John W. Russell '67
Steven T. Scalzo
Alfred H. Schwendtner '54
Joseph A. Signorelli '54
Peter A. Silvia '62
Richard A. Smith '03
Paul E. Sullivan
Matthew P. Tedesco '91
Theodore L. Thorsen '61
Michael W. Toner
Robert Turoff, P'15
John D. Van Buskirk '76
Justin C. Van Emmerik '13
Vigor Industrial, LLC
W. Brett Wilson '75
Charles Zeien '50

Sponsor \$2,500 to \$4,999

Ronald J. Altmann '63
George J. Berger '66
Robert H. Bolling '97
Stephen R. Breit '79
Joseph A. Burns '62
Steven G. Buttner '70
Donald L. Caldera '57
Fred B. Chester '66
Roger H. Compton '61, PG'64
Jerry W. Cuthbert '56
Donald C. Deckeback II '63
Tim and Kristi Dickson, P'19
John L.R. Edgar III '87
John and Nancy Fagan, P'17
Paul and Carolyn Fleming, P'12

Matthew R. Fox '04
Douglas H. Frauenberger '02
Peter A. Gale '59
Richard A. Gilmore '77
Selim and Aysegul Gomez, P'18
Christoph A. Grueneis '92
Steven and Marian
Guglielmoni, P'12
David W. Gustavson '78
Thomas R. Hagner '66
Lester and Jean Hale, P'18
William B. Hale '78
Mark R. Henry '62
Mr. and Mrs. John S.
Husser III, P'18
D. Michael Hutchings '95
Peter A. Johnson '56
Roy E. Johnson '62
Mr. and Mrs. Stephen Jones, P'19
Stephen R. Judson '74
Richard S. Kim '11
Horton W. Lain '55
Christopher H. Lyons '10
Jeffrey S. Magrane '89
Daniel A. Malarkey '06
Robert J. Marinelli '73
Wayne D. Martin '67
Erin M. McElroy '15
Joel S. McMinn '75, P'09
Jack and Corrine Mills, P'16
Richard A. Mulford '61
Michael and Catherine
Nowakowski, P'10
Liam C. O'Connell '98
Russell C. Pollock '08
George and Christine Reiss, P'18
Benjamin E. Rising '93
Mike and Deb Roske, P'19
James W. Royle, Jr. '66
Daniel Schorsch '58, GP'19
Eugene Schorsch '52
Ted A. Slotwinski '73
Kelly T. Sonerholm '06
David G. St. Amand '77
Winston B. Sutter '53
Thomas P. Tindale '10
Paul G. Vibrans '71
Edward V. Vienckowski '78
Charles G. Visconti '55
Paul R. Vragel '72
Peter K. Wallace '93
Michael J. Whalen '79
Chris and Lisa Windham, P'19
Meldon J. Wolfgang IV '93
Steven F. Wolgamot '69
Peter B. Zahn '80, P'05



Honorary alumnus/a (Hon.) - Spouse of deceased alumnus/a (S) - The names of deceased donors are *italicized*.

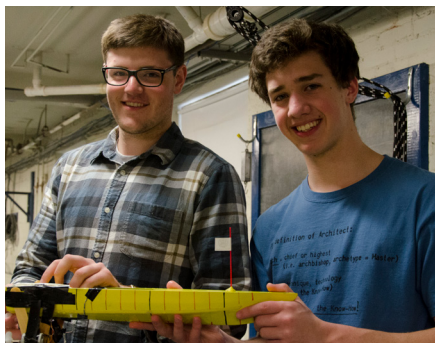
Member \$1,000 to \$2,499

Edgar D. Alderson '49
A. Todd Andre-Colton '74, P'05
Greg and Deborah Bashkoff, P'17
Christopher J. Becker '08
David B. Benson '56
Victor W. Bethge '53, GP'05
Mark and Mary Bishop, P'12
F. Roland Bjorklund '66
Scott D. Black '90
Andrew S. Bond '98
Jeffrey B. Bowles '00
W. Porter Bratten III '08
Mr. Chris Brown and
Ms. Samira Hakki, P'16
Diana M. Brown '09
Corey L. Bruno '02
William M. Cannon '65
Robert B. Carelli '09
Michael E. Cariello '10
Gregory E. Castleman '76
Paul D. Chapman '67
Allan S. Childers '12
Albert R. Chovit '51
Robert and Mary Chozick, P'18
Mary E. Cleary
Matthew D. Collette '99
Lou and Dorene Commisso, P'18
Bruce D. Cox '66
Christopher B. Decker '95
Agnelo and Olen Dias, P'19
Thomas E. Dickenson '92
Paul H. Diehl '56
Douglas H. Dirks '66
Katherine Dixon, P'11
Victoria Dlugokecki '88
Satchel Douglas '15
Alana Duerr '08
Phillip S. Duerr '09
Robert E. Dvorak '07
James R. Dwyer '72
Carl D. Fast '77
Nathan S. Fast '14
Jenna M. Ferrieri '11
Peter B. Fontneau '68
R. Mark Forssell '55
Austin J. French '09
Daniel J. Fritz '87
Dale Froriep, P'16
Geoffrey D. Fuller '72
John and Linda Gagliardi, P'18
Raymond Gagliardi, GP'18
John P. Gallagher '74
Neil J. Gallagher '78
Charles Garland '58
John L. Glaeser '68
Douglas M. Gluntz '57
Richard A. Goldbach '58
Fred Gordon '78
John A. Graap, Jr. '61
Richard S. Graham '83
Samuel Granger '14
Timothy Graul '63X

Gregory M. Griffin '77
George Gross, P'10
Charles L. Grover III '58
Evelyn R. Hackel '05
Jerrier A. Haddad (Hon.)
Mary A. Hafner
Raymond S. Hall, Jr. '58
James R. Hancock '67
Richard C. Harris
James Harvie '55
Todd R. Heidenreich '89
David A. Helgerson '77
Dane M. Hendrix '84
Halsey C. Herreshoff '55
Christopher A. Hicks '99
High Noon Sailing Limited
Robert and Claire Hochheiser, P'18
John C. Hootman '01
Jay S. Howell, Jr. '72
Joseph A. Hubbard '95
Lucas A. Hurt '01
John F. Ince '66
Daniel P. Jacques '87
Spencer Johnson '93
Albert N. Kamahi '93
Joseph J. Kelleher '84
Chris and Louise King, P'18
Matthew Kleiger, P'19
Edmund T. Klemmer '44B
John R. Knobel '73
L. Randall and Billy Eve
Koenig, P'80
Dahir J. Kolich '96
Stephen D. Koopman '91
Clinton W. Kreitner PG'65
Daniel and Patricia Kremers, P'17
Cody C. Kurtz '08
Mr. and Mrs. John C.
LaBerge, P'76
Heidi C. Landen-Greene '96
Geoffrey G. Landon '79
John W. Larson '53
David S. Lawson, Jr. '55
George and Polly Lawson III, P'17
Cyrus J. Lawyer IV '06
Conan H. Lee '89
Peter S. C. Lee '10
Rhonda Lightcap
Marc T. Limeri '77
Bridget F. Lisnyk-Washlack
(Hon.), 63S
Christopher T. Loeser '70
Douglas J. Loeser '73
Mr. and Mrs. John Lorenc, P'16
Anthony J. Loreto '08
Duncan T. MacLane '78
Walter M. Maclean
Amanda M. Malarkey-Nair '10
Henry S. Marcus '65
William J. Markuske '10
Nikolas P. Martecchini '09
Bernard C. Mayer '57
Justin H. McCarthy '55
James W. McCoy '57
Kristen McCutcheon
Nathan J. McKenzie '98

Joshua S. McMinn '09
Barton W. McPheeters '85
Candace Miano '04
Thad J. Michael '97
Jason W. Minett '06
Kathleen Cain Minnich '07
Stephen T. Minnich '08
Justin C. Morgan '12
John and Kathryn Morrissey, P'17
Andrei Mouravieff '09
George and Tatiana Mouravieff,
P'09, P'11, P'16
Brian M. Mulligan '94
Katharine A. C. Munkenbeck '04
Lidia Needham '11
Schuyler J. Needham '12
Paul and Linda Neureuter, P'14
Erik Nilsson '93
William F. Nugent '90
Jack Oczeretko '12
John F. O'Dea '68
Matthew H. O'Leary '07
Robert C. Olsen, Jr.
Shirley Panek, P'18
Jay E. and Phyllis Paris '64
Jane Partanen, P'87
Ryan A. Pfeifer '11
George L. Phillips '51
Philip M. Poullada '78
David and Karen
Przelomski, P'16
Mark D. Pudlo '87
David C. Purdy '50
Irving G. Raphael '67
Douglas A. Read '97
Latchman and Deorani
Reddy, P'19
Jeffrey D. Reifsnnyder '08
Edward A. Rerisi '96
Donald E. Rickerson III '13
Thomas C. Rider '82
Gabrielle Rini '87
David R. Rodger '63
Richard C. Rodi '64X
Karen G. Rossbach '91
Jon and Jennifer Roussin, P'17
Eric Runnerstrom '69
Jennifer R. Ryan '99
Kit Ryan '67
Arthur C. Sargent '53
Cullen D. Sarles '10
David J. Sawyer '08
Rachel A. Sawyer '09
Roxanne R. Schacht '13
Joseph A. Schetz '58
Christine Schleicher '89
Dean M. Schleicher '88
Richard Schmitt '62
Mr. Benjamin Scott and
Dr. Patricia Shustock, P'10
Lisa Mende-Senus
James J. Shaughnessy '89
Lewis R. Sheldon III '73
David M. Shepard '85
Steven C. Shepstone '77
Edward Shope '59

Richard B. Siek '74
Reed D. Sigfridson '73
Elizabeth M. Singleton '07
John J. Slager '49
Bret S. Smart Jr. '09
David Smith '14
J. William Smith '63
Richard A. Smith '76
Ronald and Lynne Smith, P'13
Douglas L. Snediker '98, PG'99
Daniel J. Snyder '10
Paul G. Snyder '69
Joel P. Sadowsky '96, PG'97
Richard T. Soper (Hon.)
Leah R. Sosa '08
John S. Spencer '69
J. Niel Spillane '50
Jeremy A. Stahlin '66
George and Nancy Stebe, P'08
John R. Stebe '08
Stolthaven Houston Inc.
Robert J. Stortstrom '77
Joseph F. Stroschein '56
Gailmarie Sujecki (Hon.)
Sean M. Sundey '03
Robert J. Talarico '12
Thomas S. Taylor '53
Catherine A. Tedesco '94
Michael J. Telfer '98
Bernard M. Thomson III '66
Jessica K. Tomczak '08
Edmund G. Tornay '56
Steven W. Torok '97
Christopher N. Tupper '75
Matthew D. Turns '00
Stephen and Joan Turns, P'00
Daniel Turoff '15
Matthew L. Unger '04
Joseph M. Verdon '63
Brett A. Vitols '89
Robert J. vom Saal '67
Charles B. Walburn '70
Jonathan D. Ward '09
Samuel K. Waterhouse '13
Thomas J. and Jennifer K.
Waters '89, '91, P'20
Mr. David Weathers and
Ms. Kathleen Bracken, P'19
James R. Whitley, Jr. '79
Sarah E. Wickenheiser '08
Vincent S. Wickenheiser '08
Peter and Amiee Wiley, P'19
Simmy D. Willemann '10
Jonathan G. Williamson '58
Daniel Wilson '09X
Nathan and Deborah Wilson, P'19
John P. Wise '09
Peter and Michele Wistort, P'17
Scott G. Withee '72
Stefan T. Wolczko '09
Mark K. Wolf '95
Patrick and Odile Yeramian, P'19
Peter F. Zink '72
Robert B. Zubaly '55
Anonymous (3)



Honorary alumnus/a (Hon.) - Spouse of deceased alumnus/a (S) - The names of deceased donors are *italicized*.

2015-2016 Donations - Webb Honor Roll Donors

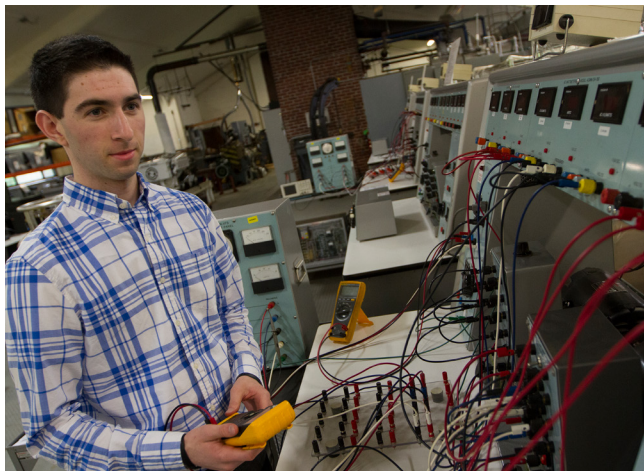
President's Club \$500 to \$999

Michelle L. Adam '97
Jonathan R. Amy '70
Robyn J. Anders '64
Roderick A. Barr '60
William and Nancy Bartling, P'13
Mark R. Bebar '70
James B. and Gwendalyn D. Benoit '01
Robert and Charlene Benoit, P'01
Michael R. Birmann '86
Matthew D. Blake '78
Alan M. Bolind '98, PG'99
Nathaniel S. Bossett '96
Neal A. Brown '57
Stuart C. Bunnell '70
Harold and Catie Burnett, P'16
Thomas W. Campbell '69
Brendan M. Carr '07
Esteban and Melba Castro, P'11
Mr. Champigneulle and
Ms. Courtenay O'Sullivan, P'19
Yongjun "Dan" Chen PG'99
Albert and Grace Cheng, P'12
Richard A. Clayton PG'56
James Codega '14
Anthony T. Constable '02
Nolan B. Conway '15
Stephane J. Cordier '82
Joseph N. Corvelli '93
Jason M. Dahl '02
William C. Danilczyk '07
Dudley A. Dawson '71
Drs. Theresa and Roland De Marco, P'13
Nicholas J. DelGatto '12
Tedi R. Derrickson '10
Andrew J. DeSpirito '03
George T. and Marie DeSpirito, P'03
Jacqueline A. DeSpirito '02
Nicholas M. Dombrowski '02
Jonathan H. Dowsett '09
Daniel A. Dwyer '13
Michael S. Eaton '06
Robert and Eileen Eaton, P'06
David D. Eberhardt '07
Richard G. Eddy '55
Robert L. Edlin '54
Patrick D. Faas '07
Frank P. Falci, Jr. '54
Kenneth W. Faulter '81

Kimberly A. Fisher '86
John A. Fleming '12
Betty Rose Forsell
Howard Frauenberger, P'02
Nathan B. Frederickson '96
Bill and Lisa Geschwilm, P'18
Patrick J. Gilmartin (Hon.)
Michael J. Goodwin '69
Patrick J. Goss '90
David J. Grant '98
Stuart R. Greene '95
C. Kent Greenwald '80
Matthew J. Groff '12
Sandra Groff, P'12
David M. Gross '10
Mr. Arthur Cheliotas and
Dr. Linda Gross-Cheliotas, P'10
Steven Guglielmoni '12
Lance O. Guliani '81
Ryan E. Hackel '04
Douglas W. Haefeli '98
Barbara Hamlin (Hon.)
Alexander Hanford '15
Michael and Kristine Hanford, P'15
Jared P. Harlan '12
Christopher and Maricar Harris, P'19
Arthur L. Harrison '59
John G. Harrison '70
William Healy '89
Christine L. Heberley '02
Robert B. Hedges '53
Matthew and Theresa Herinckx, P'06
Taylor M. Herinckx '06
Russell H. Hoffman '74
Ernest L. Holmboe '61
Michael J. Hughes '88
Steven and Michiko Hughes, P'19
William C. Hurt III '59
Orris B. James, Jr. '51X
Caitlin E. Jarecki '05
Vincent J. Jarecki III, '05
Lee E. Jerry '91
Ralph E. Johnson '68
Eric Jordan '05
William A. Jordan '96, PG'97
Mr. and Mrs. Isaac Kamahi, P'93
Ivan N. Kirschner '81X
Howard and Rosamond Kleiger, GP'19
Robert J. Kleinschmit '06
John W. Kloetzli '74
Philip C. Koenig '80

John B. Kopp '41
Susan Krembs
Russell E. Kupferer '99
Mr. and Mrs. Thomas Kupferer, P'99
Alexander C. Landsburg '66X
Stephen J. Lardie '73
Michael D. LaRose '13
Jonathan D. Leivo '07
J. Paul Lemoine '91
Christopher Licato '15
William T. Lindenmuth '63
Lindsey K. Lindgren '08
David E. Little '75
Andrew Lum '12
James and Susan Manis, P'12
Kyle R. Manis '12
Daniel S. Mannheim '08
Matthew G. Marburger '07
Mariano's Cleaning Service, Inc.
Thomas P. Mastronarde '69
Thomas W. Mattson '67
Joseph Mazurek (Hon.)
William R. McCreight '67
Gary W. McCue '75
Bill R. McEachen '84
Ian S. McMahon '11
John A. Mercier '60
Vito R. Milano PG '60
Joseph D. Mott, Jr. '75
Ian Mutnick '96
Mr. and Mrs. Victor Mutnick, P'96
Raymond P. Nancoz '88
George P. Neyman PG'66
Francis X. Nicastro '56
Henry A. Olson '63
Thomas T. O'Shea '00
Jonathan G. Parrott '79
Joel R. Parry '79
Dale E. Pederson '12
David R. Pedrick '70
Carl J. Persak III '96, PG'97
George A. Petersen '51
Daniel J. Platt '87
Craig A. Pomeroy '83
Herman S. Preiser '49
Walter D. Rabe '70
Robert C. Ranzenbach '82
Lisa M. Read '97
Daniel and Beth Reifsnnyder, P'08
Dean Risseuw
Hugh J. Risseuw
Benjamin Rockwell '15
John K. Roper '53

Joshua W. Rothman '10
David L. Rusnak '88
Thomas A. Ryan '88
Dustin R. Rybovich '10
Christian Saether '75
Daniel and Vivian Sarles, P'10
Spencer A. Schilling, Jr. '82
Arthur W. Schmidt '48
Alexander L. Scott '10
Robert C. Seiwel, Jr. '69
Timothy Semenoro '95
Carl R. Setterstrom '73
Justin P. Shell '08
Lorne B. Sheren '73
Luke A. Shingledecker '00
Michael L. Silber '63
Monique Sinmao '93
Douglas L. Slocum '10
Jeffrey and Susan Slocum, P'10
Emerson L. Smith '08
Marc V. Smith '13
Jonathan J. Soja '13
Joseph and Julie Soja, P'13
Andrew T. Speirs '97
Colin T. Spillane '13
Mr. Joseph Stansky and
Ms. Lynn O'Brien, P'16
Jerry L. Steiner '70
Stanley C. Stockdale '73
Michael H. Stodick '00
Luke L. Suda '80
Raymond and Kimberly Throckmorton, P'18
Joseph J. Tooker '02
Owen W. Tredennick '97
Elizabeth A. Tuckel '01
Barr and Tracie Turner, P'17
Jason P. Updegraph '01
John Vasilakos '77
Rachel Walker '14
William A. Watts '76
William C. Webster '59
Abbott D. Weiss '63
Emily E. Whitman '05
Ethan T. Wiseman '11
Karl R. Witmer '75
Kirsten E. Wunder '14
David M. Yannitell '67
Eugene A. Yourch '59
Matthew B. Zahn '05
Amy Zahray '14
Troy D. Zangle '13
Douglas C. Zangre '13
Anthony R. Zic
Thomas E. Zielinski '72



Honorary alumnus/a (Hon.) - Spouse of deceased alumnus/a (S) - The names of deceased donors are *italicized*.

Richard T. Zuerner '59X
Anonymous

Young America Club \$250 to \$499

James K. Antrim '72
Kevin D. Baetsen '77
Cameron M. Baker '07
Susan C. Barra P'07
Gerald E. Bellows '71
Damian Bozzacco '00
Alfred A. Bozzuffi '78
Michael J. Bradford '75
C. Pauline Breit, P'79
Thomas P. Brewton '74
Terry E. Brockett '62
Michael R. Brooks '75
Kyle S. Brunelle '82
David and Theresa Cain, P'07
Peter D. Canning '72
Thomas W. Chadwick '72
Michael G.K. Cheng '12
W. Edward Christiansen '58
Peter R. Coe '76
George L. Colborn '54X
Joseph S. Cole '92
Thomas B. Cole '60
Roland D. De Marco '13
Greg Diggs '91
Jacqueline C. Diggs '92
David J. Donatelli '11
Grant B. Dugan '81
John S. Eck '90
Samuel R. Ernst '03
Johanna M. Exner '08
Harrison and Lyn Faas, P'07
J. Carey Filling, Jr. '93
Willa N. France '72
Mr. and Mrs. Trevor French, P'09
Lee and Claire Froriep, GP'16
Anne M. Fullerton '99
Scott G. Furr '00
Mark W. Gagnon '82
Pastor Austin E. Ganly
Matthew Gianforcaro '15
Zachary Gilfus '15
Bradley D. Golden '99
Todd S. Gregory '99
Samantha Griswold '14
Peter C. Gross '82
William and Dora Grover
Austin P. Guenther
Nathan T. Hagan '12
Daniel H. Harris '85
Eric Harris '14
Nancy A. Harris '88
Casey M. Harwood '11
Charles E. Hawkins IV '91

Daniel R. Healy '87
Brian D. Heberley '01
Bill Helming '73
Douglas S. Henn '79
Kathleen Henn '80
Patrick T. Hester '01
William and Donna Hill, P'19
John F. Hillmann '56
David S. Homiak '75
Christopher G. Hooper '11
Jessica Hurt, P'01
Alma C. M. Jacobson '01
Donald R. Jacobson '01
Henry G. Jansen '14
Peter E. Jaquith '65
Patricia B. Jeffers, P'01
Robert K. Jenner '70
Robert S. Johnson '59
William and Donna Jordan, P'96
Donald E. Kane, Jr. '48
Robert and Wilma Kehl, P'91, GP'20
Bradley S. Kell '80
Michael J. Kidwell '80
Justin R. Klag '11
David and Sandra Kleiman, P'87
Ulrich H. Koch '55
Andrew R. Kondracki '83
Stefan Kuczera '15
Andrew J. Lachtman '11
Michael G. LaGrassa '07
Christopher M. Lake '96
Susan E. Lake '99
Andrew R. Lange '06
Adam F. Langerman '04
Mr. and Mrs. Donald R. Lee, P'89
Caroline Macri '87
Glen W. Margolis '85
Jim McMahon '85
John R. Mixon '97
James R. Moody '82
David G. Moorhead '65
Michael and Margaret Morabito, P'05
Sean P. Murphy '13
Randall Neureuter '14
Roy A. Neyman '77
Gerardo E. Nixon '13
Andrew J. Nowakowski '10
S. Taylor Olson '91
Mark D. Paulhus '85
Thomas J. Perrotti, Jr. '85
George L. Petrie '70
Alexandra L. Pitti '15
George H. Plude '54X
Dave and Vanessa Prichard, P'18
Dominique and Holly Ratinaud, P'17
John M. Ringelberg PG'67

Brandt and Helen Rising, P'93
Christopher Rose '11
Robin S. Rose '09
Dean H. Royal '90
Joseph G. Rudnicki '73
Thomas D. Sartor
Aileen G. Sedmak '87
Frederick Seibold, Jr. '61
Joern Ilja and Silke Siepmann, P'17
John E. Sirutis '67
Bret and Denise Smart, P'09
Raymond and Kiki Soletic, P'08
Oren L. Stephans '59
Larry K. Stephens '63
Richard L. Storch '67
John J. Sullivan IV '01
Christopher Swanton '98
William B. Terney '60
Andrew Thompson '15
Mr. Bruce Thompson and
Ms. Laurie Geisel, P'15
Daniel P. Thrush '96
Lennert O. Thunberg '58
Tyler Totten '15
Stephen J. Van Denburg '01
Edward S. Van Dusen '67
Mr. and Mrs. Philip L. Vittetoe, P'94
Phillip J. Wagner '78
Dan and Patrice Walker, P'18
William G. Wallace '65
Robert J. Walling '12
Lawrence W. Ward PG'51
Mr. Robert Waterhouse and
Mrs. Linda Ziedrich, P'13
Webb Alumni Association
Paul T. Weber '92
Jana Wesson '95
Richard and Leslie West, P'16
Donald and Carolyn White, P'99
Mr. and Mrs. Daniel Wickenheiser, P'08
Geoffrey D. M. Wilkie '82
Carl P. Wilson '51
Jocelyn M. Wilson (Hon.)
Evan D. Wingfield '15
Donald and Stacey Wolczko, P'09
Jerrold L. Wyman '98
Daniel W. Yannitell '62
Tin-Guen Yen '98
Wesley Yland '15
Andrew S. Zahn '76
Gary R. Zane '77
Anonymous (3)

Elie Amar '11E
Amazon Smile Foundation
Kenneth C. Anderson '82
Dennis F. Antweiler '71X
John P. Archibald '75
Anthony F. Attanasio '82
Ryan J. Babb '02
Zachary P. Backas '16
L. Dennis Ballou PG'61
Heather D. Barden '03
Matthew V. Barlin '97
Robert I. Barra '07
Bernie and Eleanor Bashkoff, GP'17
Clifford and Ida Bauer, P'84
Nigel and Sherry Beale, P'01
Thomas A. Beckley '95
Connor Bennett '14
William Benoit
Janet Berger, P'96
John R. Bergquist '99
Cathryn A. Bishop '12
Leland J. Boltz '12
Ray and Diana Boltz, P'12
Albert H. Bowers, III '62
Mr. and Mrs. William G. Boytim, P'92, P'02
Thomas J. Brackin '16
Allyn V. Bress PG'59
William L. Brinck '60
Gail A. Broome, P'91
Casey P. Brown '16
Donald and Robin Brown, P'85
James G. Brown
Glenn B. Burnett '16
Martin N. Burtness '85
Michael Bushnell '69
James and Elizabeth Campbell, P'19
Phyllis Canter
Mark D. Caplan '85
John Carlson '14
Richard M. Carlstrom '86
Chad S. Caron '98
Erica L. Carter '92
Esteban L. Castro '11
Dale and Noemi Chaddock, GP'19
Kathryn A. Chaffee '16
Michael Chen '15
Allen and Mary Chin
Wayne H. Christensen, Jr. '61
Mr. Christopher Claremont and
Ms. Beth Fleisher, P'19
Douglas N. Clough
David H. Collins '73
Michael D. Comens '72
Robert M. Conachey '80
Clayton Cooley, P'10
Seth D. Cooley '10
Mr. and Mrs. Stephen Corkery
Kenneth E. Court '60

Donors \$1-\$249

Michael A. Abbruscato '11



Honorary alumnus/a (Hon.) - Spouse of deceased alumnus/a (S) - The names of deceased donors are *italicized*.

Martin and Donna Cover, P'92
 Karyn V. Cox '02
 Steven M. Cullity, Jr. '07
 John C. and Nancy Daidola
 Mark P. D'Angelo '07
 John and Marilyn De Laney, GP'14
 Kierstin M. Del Valle '13
 Michael and Kristine
 DeNapoli, P'20
 Matthew E. Denson '93
 Michael E. Diggs '96
 John and Esther Dona, GP'15
 Matthew A. Donatelli '08
 James Doran
 Robert and Sharon Doran, P'12
 Sean R. Doran '12
 Daniel H. Dorman '83
 Robert and Diane Dvorak, P'07
 John and Judith Edinger, P'99
 Jon K. Elliott PG'68
 Allen D. Evans '61
 Jaye Falls '95
 Ernest W. Fergusson PG'58
 Kim F. Ferris '75
 John and Louise Fielding, P'96
 Millard S. Firebaugh (Hon.)
 Benjamin Fisher '11
 Louis and Simone Fitamant, GP'14
 Wm. Jason Flatt '98, PG'99
 Peter W. Flemming '75
 Mr. and Mrs. Robert Fooks, P'85
 Robert P. Fooks '85
 Dylan M. Froriep '16
 Paul F. Gallagher '87
 Kurt A. Gavel '16
 Adam E. Geary '07
 Daniel B. Gebhardt '95
 Bradley J. Gelles '10
 General Dynamics Electric
 Boat Corp.
 Michael L. Gerardi '82
 Mr. and Mrs. Robert F.
 Gill III, P'02
 Robert F. Glover, Jr. '85
 Robert D. Goldbach '58
 Douglas C. Goldhirsch '85
 Oleg Golubev '16
 Eugene H. Gotimer '90
 Thomas and Joan Gotta, P'07
 William T. Gotta '07
 Matthew Graham '14
 Mr. and Mrs. James U. Grant, P'98
 Ms. Toni Gratzel, P'16
 David S. Greeley '76
 James A. Gretzky '80
 Paul and Ruth P. Guenther
 John W. Hall '63
 Robert W. Hall '67
 Stephen E. Hancock '84
 Pete and Pat Hanford, GP'15
 Zachary J. Harris '11
 Andrew D. Harville '09
 James and Kathy Harville, P'09
 Hawkins Family
 Lorraine Healy '87
 Guy and Patricia Hendrix, P'84
 Robert and Susan Henry, P'97
 Scott C. Henry '97
 William J. Hooker '53
 Glenn Howard, Jr.
 Thomas and Linda Howard
 Mark F. Huang '88
 Erin Hub '16
 Ralph R. Hubbard, Jr. '73
 Bob Huret '65X
 Mr. Alexander Iley '14E
 Marion C. James '11E
 Kristin P. Jarecki '08
 Elizabeth F. Jeffers '01
 Lauren N. Kadlec '09
 Paul Kamen '73
 Lori R. Kapusta '82
 Robert L. Kelly '46
 Elijah S. Kim '16
 Karl L. Kirkman '65
 Michael E. Klein '11
 Timothy A. Knowles '75
 Andrew E. Ko '16
 David C. Kring '88
 Krzysztof and Joanna
 Kuczera, P'15
 Richard F. Labasky '76
 Harry and Elizabeth
 Lachtman, P'11
 Joshua R. Lambertsen '11
 Peter J. Lapp '77
 Evan J. Lee '05
 Gary and Elizabeth Lee, P'08
 Simon and Mabel Lee, P'05
 Lawrence Leibman '86
 Sarah M. Leitner '95
 Karl and Pamela Leivo, P'07
 Wardwell and Viola Leonard, Jr.
 Lauren R. LeRoy '05
 Jennifer Lorenc '16
 Ann Marie Lucas-Cooley, P'10
 Lorna Lynn
 Beth and Michael Maffei, P'17
 Joseph and Muriel Magrane, P'89
 Wilbur J. Mahony PG '58
 Robert and Susan
 Malarkey, P'06, P'10
 Mr. Gabriel Mannheim and
 Dr. Andrea Platt, P'08
 William C. Marrin, Jr. '59
 Robert McGowan '62
 Susan McKee, GP'17
 Douglas R. McPherson '75
 Michael J. Meinhold '82
 Stuart H. Mennitt '86
 Paul B. Mentz '64
 Ann E.C. Meyer
 William M. Milewski '86
 David H. Milligan '77
 Brian T. Mills '16
 David and Cynthia Minnich, P'08
 Michael G. Morabito '05
 Justin M. Morgan '92
 Melissa K. Morgan '86
 Ken and Jennifer Morrison, P'11
 Mr. and Mrs. Peter Morrissey
 James M. Moss '97
 Ilya Mouravieff '16
 Mr. and Mrs. Gerhardt G.
 Muller, P'94
 John and Anna Mulvihill, P'84
 George and Mary Munkenbeck,
 Jr., P'01, P'04
 Colleen Murray
 Todd R. Nass '80
 James R. Nave '87
 Dan Nerney
 John D. Nonemaker II '10
 Kelly J. O'Brien '16
 Drs. Adrian S. and Laura Onas
 Scott D. Orlosky '77
 Cody C. Owen '15
 Robert H. Owens '77
 Bruce and Kathryn Patterson, P'09
 Laura K. Patterson '09
 Brian J. Petersen '07
 John T. Pierce PG '63
 Andrew W. Polay '00
 Neil and Judith Polay, P'00
 Gabriel Poritz '15
 Nathan L. Pratt '07
 Karl A. Pritchard '87
 Dylan Przelomski '16
 Alfred I. Raff '58
 Robert H. Reed '89
 Scott Richards '77
 Robert K. Richardson '60
 Lawrence and Eilene Riemer, P'05
 Niel I. Rising, GP '93
 Paul W. Risseuw '65
 Geoffrey S. Rivinius '75
 Tom and Mary Ann Rockwell, P'15
 Krista Rothmaler and John Warnke
 Richard A. Royce
 Kenneth Rusinek '72
 Thomas and Megan Ryan, P'88
 Eugene and Barbara Sackett, GP '13
 Ryan W. Sadlo '07
 Lawrence Schober '87
 Peter and Mary Schock
 James L. Schuler
 Gram E. Schweikert '02
 David Segermark
 Mr. and Mrs. Barth Semenoro, P'95
 Ashok and Rajanee Shendure
 John W. Sims '52
 Mark Skinner '67X
 Anne Small
 James and Norma Smith,
 GP'06, GP'10
 Nathan A. Smith '01
 Patricia C. Smith, P'76
 Luke C. Soletic '08
 Barry M. Solomon '87
 Joseph Sosa, P'08
 Mrs. Lynn Sosa and Mr. Jeff
 Parkin, P'08
 Cody B. Stansky '16
 Bruce H. Stephan
 Mr. and Mrs. Michael B.
 Stusse, P'00
 Wayne S. Thayer '80
 Daniel H. Thompson '57
 Phil and Niki Tilicki, P'19
 Janice Tindale, P'10
 Jeanne E. Torstenson '93, PG'97
 Kirk E. Torstenson '93
 Mr. and Mrs. William H.
 Tredennick, P'97
 TT Electronics Integrated
 Manufacturing Services, Inc.
 Rocco and Tracy Tutela
 Stephanie Van Denburg, P'01
 Adam H. Van Doren '08
 Carol A. Vernon '83
 Donald and Ursula Vernon, P'83
 Flavia Von Vogrig
 Franz and Kristine Wagner
 Michael I. Walker '16
 Britton R. Ward '95
 David and Doreen Ward, P'09
 Robert A. Warren '65
 Jerome and Carol
 Waters, P'89, GP'20
 Robert and Marilyn
 Weathers, GP'19
 William and Ruth Webster
 Matthew Weklar '15
 Robert and Elizabeth Weklar, P'15
 Matthew R. Werner '95, PG'97
 Lauren A. West '16
 Gabriel D. Weymouth '01
 Charles and Linda Whalen, P'11
 Katherine A. Whalen '11
 Marcia H. Whitman '81
 Paul and Kathleen Wiese, GP'19
 Rich Willdigg
 Women's Propeller Club
 Kent D. Woodward '68
 Timothy Yen '04
 Don B. Young '60
 Walter and Kathryn Zahray, P'14
 Leonard and Harriett Zivin
 David Zoller
 Aurore V. Zuzick '09



Honorary alumnus/a (Hon.) - Spouse of deceased alumnus/a (S) - The names of deceased donors are *italicized*.

VOLUNTEER SPOTLIGHT:

Helping Power Webb's Engine

While the faculty and staff work daily to make Webb the success it is today, the Institute has always depended, and will continue to depend, upon the alumni, parents, and friends who volunteer their energy and enthusiasm to the Institute's ongoing financial and operational health. Five people who represent that spirit of volunteerism were asked eight questions in order to identify the origins of that spirit. While space does not allow inclusion of the complete text, what follows captures the essence of their responses. The questions posed to them were:

- Can you provide a brief bio – home town, college, major, career highlights, current activities?
- What volunteer positions have you held at Webb?
- What made you choose your career path? How did your childhood/family experiences influence your choice?
- When did you first hear about Webb?
- What do you consider to be the “best of Webb”?
- What would you like to see improved at Webb?
- What made you decide to commit time, talent, and treasure to Webb?
- Is there anything in your past that made you say, “I need to give back”?



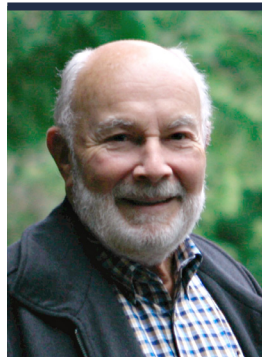
Dr. George Campbell earned a Ph.D. in theoretical physics from Syracuse University, a B.S. in physics from Drexel University and is a graduate of the Executive Management Program at Yale University. He spent much of his career at AT&T Bell Laboratories, where he held various R&D and management positions prior to his tenure as President of The Cooper Union

for the Advancement of Science and Art from 2000 through 2011. Upon his retirement, George was elected President Emeritus by Cooper's Board of Trustees. He came to Webb as a member of the Board of Trustees in 2011 and subsequently was elected Chairman. George is married to Dr. Mary Schmidt Campbell, former professor in the Department of Art and Public Policy and Dean of the Tisch School of the Arts at New York University. She is vice chair of President Obama's Committee on the Arts and Humanities and on August 1, 2015, began her tenure as the 10th president of Spelman College.

Says George: “I think few people who end up in leadership positions actually map out their specific career path at an early age. We generally choose a profession, which for me was physics. Then one thing leads to another, as we encounter multiple decision points.” When Bell Laboratories offered George a management position, he decided to disengage from basic science to take on a leadership role.

George's family financial circumstances would not have allowed him the opportunity to attend college without the benefit of a Guggenheim Scholarship, so the idea of providing access to higher education for talented young

people is something he holds dear. At Cooper Union, he viewed Webb as a sister institution and particularly admired the fact that it is a meritocracy, allowing those who qualify to be admitted, regardless of personal history. He deeply believes in Webb's unique mission and its commitment to academic excellence, and is further enamored by its singular focus on a critically important field. At the same time, he feels there is potential for improvement in increased breadth and depth in the liberal arts.



Mr. Joe Cuneo was born and raised in “Da Bronx.” He had been around small boats in his youth but thought he wanted to become an architect. His father's older brother, living in Port Washington and working in the marine industry, told Joe about this wonderful school located in Glen Cove that taught naval architecture and provided full scholarships. His family was

of very modest means and, Joe says, “I thought if I can design yachts instead of houses, why not? Little did I know!”

Joe's family history includes a great grandfather, Nicholas Cuneo, who sold fruit from a pushcart as a teenager in Chicago, and grew the business into a shipping company with a large fleet. When Joe's great grandfather died, his obituary in *Time* magazine described him as “the banana king.” The fleet was long gone after Nicholas' death in 1925 and the Great Depression, but his entrepreneurial spirit lives on in Joe. After Webb (Class of '57), Joe graduated from the Harvard Business School and enjoyed a long career primarily in the shipping and ship design industry. He was co-founder and president of

what became the largest LNG shipping company in the pioneering days of that industry. He became a Trustee of Webb in 1982 and is still serving, having chaired many of the Board's standing committees; he served as vice chair and then chairman of the Board for four years, 2005-2009, and now serves as the *Campaign for Webb* Chairman.

"The discipline of hard work, the Honor Code, the family atmosphere, but perhaps most of all, the spirit of 'giving back' as exemplified by William H. Webb as emulated by so many of our alumni, are just some of the major elements that make Webb an extraordinary educational experience," says Joe. His own spirit of "giving back" was stimulated by a speech by the owner of the first company he worked for after graduate school. John McCone was asked by then President John Kennedy to return to government service as the head of the CIA, having served under Eisenhower as the head of the Atomic Energy Commission. Addressing his employees, Mr. McCone outlined his philosophy of a successful life: first gain an education, second make one's fortune, and third give back to the society that provided the benefits of the first two. Says Joe: "His comments resonated immediately as I thought of the life of William H. Webb." As to improvements, he says, "I would like to see greater respect for neatness and discipline than now prevails at Webb. That said, nothing is more satisfying as a trustee than to attend graduation and marvel at the quality and spirit of current Webb students and graduates."



Ms. Alison Granger is a Long Island native who grew up in Garden City, about ten miles from Webb. She is a graduate of Middlebury College in Middlebury, VT, majoring in German with a concentration in mathematics. Her father had a career in financial trading and portfolio management, and there was a lot of dinner-table conversation about investments.

She remembers hearing about the bad times in 1973-74, which allowed her to understand there would be ups and downs in markets and gave her confidence to go into that line of work. She began her career of 35 years in institutional investment management, with an early focus on fixed income analysis, trading, and portfolio management. She has worked for firms in Boston, New York, and Hartford, CT, and is currently the Chief Investment Officer of The Hartford Foundation for Public Giving, the community foundation that supports non-profits in Hartford and surrounding towns with an endowment of approximately \$900 million.

Alison heard vaguely about Webb as a child and subsequently learned that her father had applied to Webb back in the '40s, but ended up enlisting in the war. He ultimately went to Middlebury. It was an email from Webb admissions that her son Sam received in September of his senior year in high school that really got both

Sam's and his parents' attention. Sam's decision to attend Webb (Class of '14) exposed Alison to the Webb family and mission. Says Alison: "So much is written about the high cost of higher education and the long-term challenge to graduates of paying off large student debt. I firmly believe Webb provides a better model; one that other institutions would be wise to adopt. Committing to provide full-tuition scholarships to all students admitted is a significant and ongoing challenge. My husband, Hal, and I both feel that our financial contributions to Webb are spent wisely, and we truly enjoy being actively engaged with Webb as volunteers." Alison and Hal jointly chaired the Parents Fund, reinvigorating that long-dormant fundraising effort focused on unrestricted annual giving from parents. Alison joined the Board of Trustees in 2012 and currently is the Chair of the Development Committee, Vice Chair of the Investment Committee, and a member of the Executive, Finance, and Compensation Committees.

Alison feels the pluses of Webb are many—the people, the academic focus and its rigor, the work ethic instilled in the students, the Honor Code, and the opportunity that Winter Work provides to gain a variety of professional experiences and to travel, making connections with current and future leaders in the industry. But, Alison says, "As beautiful as the campus is, the infrastructure is in need of a number of upgrades. Especially when viewed relative to other elite academic institutions, Webb's facilities are tired. The Board fully recognizes this and is working on plans for long-needed improvements. We also need to ensure the long-term financial stability of Webb by replenishing the endowment through the current capital campaign and encouraging additional scholarship gifts."



Mr. John Malone was born and raised in Brooklyn, NY where he learned to say "Eh, fuggedaboutit!" He always liked math and science and figured some type of engineering was a likely career choice. He was mowing the lawn one Saturday afternoon when a neighbor struck up a conversation about his plans after high school. The

neighbor suggested John look into the field of marine engineering and/or naval architecture. John's high school guidance counselor provided information on colleges offering NA/ME, including Webb. His parents couldn't afford large tuition and living expenses, so Webb rose to the top of the list. He still doesn't like mowing the lawn, but that one particular time set the course for his entire professional life.

After graduating from Webb (Class of '71), John thought he would go to graduate school at some point, but as his career seemed to be progressing well without an advanced degree, he never went back. He stayed in the marine industry his entire career, and was very fortunate to have great experiences in three major segments of the

industry: ship design, shipbuilding in two major yards building commercial and naval ships, and R&D. Recently retired, he keeps busy with volunteer commitments for Webb, SNAME, and the National Shipbuilding Research Program (NSRP). John was a Class Agent in the late '70s and early '80s, then served as Chairman of the Class Agent/Group Leader Team from the mid-'80s to 1997. He has held almost every position on the Webb Alumni Association Executive Committee, being best known for his enthusiastic chairing of the Alumni Fund, and he served two terms as a member of the Board of Trustees from 1992-94 and 2007-present. He has also been a member of the Dean's Industry Advisory Board (IAG) 1999-2015 and is currently the Planned Giving Chairman.

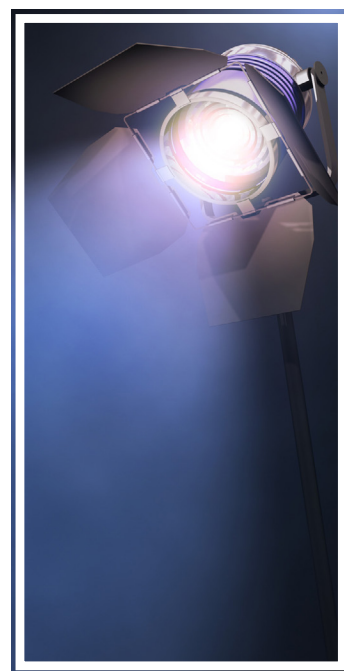
Says John: "My #1 'best of Webb' is The Honor Code, not just the don't lie/steal/cheat basics, but understanding responsibility and integrity. Close behind are the work-term experiences and making lifelong friendships." To John, giving back is not simply repaying a scholarship, but being a member of the Webb family. He says, "I have reached out to Webb alumni, and been supported, counseled, and mentored by them throughout my career. You can't place a dollar value on that. I recognized that just going to Webb was a great gift, and my initial desire to support Webb through volunteer service and financial support was driven by a desire to 'give back.' But it didn't take very long for that perspective to change to a desire to 'pay it forward,' that is, to support Webb's mission to the best of my ability, with the hope and expectation that those who benefit from the Webb experience will do the same so others can have the same opportunity that I had." His enthusiasm for paying it forward is fueled by his exposure to the students at Homecoming, board meetings, and during winter work. As many Webb students spending their winter work term in the San Diego area can attest to, John and his wife, Amy, epitomize the concept of "the Webb family." John feels that so much is right about Webb "...it seems unfair to have to find something that needs to be improved." However, he believes the current effort to re-establish a research program would bring about a number of improvements, including adding breadth and depth to the faculty, providing a modest increase in faculty size that could allow sabbaticals, and improving Webb's name recognition.



Mr. Jake Neuman grew up in Fort Washington, Pennsylvania. Throughout his childhood he was always around boats at the Jersey shore, and he remembers dismantling his Lego Star Wars kits and turning them into boats. As a result, Jake decided he wanted to be a boat engineer and eventually figured out that they were called

naval architects. During his junior year in high school he started collecting information on colleges with a naval architecture major. Says Jake: "Who would have

thought that the list was so small?" Jake graduated from Webb with the Class of '93 and did some freelance consulting for SeaLand Shipping before moving south to work for Rick Neilson '70 in the Commercial Ship Engineering Department of Newport News Shipbuilding (NNS). Having completed an MBA from William and Mary, he escaped the clutches of an apparently evil boss at NNS and jumped into investment banking before joining ExxonMobil's marine transportation group in 2000. Within ExxonMobil he held positions in several disciplines, including non-marine, and is currently working in the Liquefied Natural Gas (LNG) shipping arena.



Jake began his volunteer work for Webb soon after graduation, joining the Alumni Association Audit Committee. He served as Class Agent for several years, and became an Alumni Fund Group Leader for classes 1989-1997 with the inception of the group leader program. He has served as a member of the Alumni Association Nominating Committee and since 2015, taken on the role as Alumni Fund Chairman. As to why he accepted the latter position, Jake says: "John Malone made me. But seriously, my wife Mary, as well as most of our significant others, understands the Webb community and how much I enjoy the network and giving back to the school. When she offered her support to me, it was an easy decision. When I was accepted to Webb, I knew immediately that I owed something to somebody. If not to my high school counselor (who must have sent the wrong transcript) then to pay back to the William H. Webb vision of a tuition-free, fantastic education, which set hard-working young people on a successful career path." For Jake, the people are the best part of Webb, and he doesn't limit that to alumni. He feels it is the way that the individuals associated with Webb create a fabric of community that is long lasting and deep. But Jake says: "I think that 'fabric' could be tighter, the community larger, and more active. I am glad to see that this is a key objective of the Alumni Association over the next few years and beyond."

Common themes emerge from discussions with our volunteers: the closeness of the Webb family, the value of hard work, the desire to give back not just out of a sense of indebtedness, but to make sure the legacy of William H. Webb endures. Webb is fortunate to have a large number of dedicated individuals whose hard work allows this unique institution to thrive.

- by Richard P. Neilson '70

2015-2016 Donations - Cumulative Giving

The William H. Webb Society honors and celebrates the extraordinary commitment of Webb's most loyal contributors—those donors whose cumulative giving exceeds \$25,000. We extend our sincere appreciation to the following alumni, trustees, parents of alumni and students, friends, corporations and foundations, who are members of the William H. Webb Cumulative Giving Society.

Enterprise

\$2,500,000+

American Bureau of Shipping (n)
Arthur and Marilyn Burr '54
John C. Couch (Hon.)
Jon Couch
Joseph J. Cuneo '57
Harold "Gerry" F. and Marguerite Lenfest
J. Lewis and Kate I. Luckenbach
Stephen R. Towne '40
Peter Van Dyke '60 (n)
William H. Webb
Alfred M. Zeien '52 (n)

Laureate Fellows

\$1,000,000 to \$2,499,999

John O. Crafts 1902
ExxonMobil Foundation
Richard A. Goldbach '58
James J. Henry '35
Allen N. and Cordella M. Hoyt '36
H. Smith McKann '38
McMullen Family Foundation
John J. McMullen (Hon.)
James G. Motley 1914
Philip J. Sims '71

Laureate Sustainers

\$500,000 to \$999,999

William J. Blanton, Jr. '71
Kenneth L. Heitner (n) '64
Herman D. Pollock Family Foundation
John A. and Georgette Livingston '24
Joseph Mazurek (Hon.)
John W. Russell '67

Laureate Leaders

\$250,000 to \$499,999

Victor W. Bethge, '53, GP'05
Crowley Maritime Corporation
Jerry W. Cuthbert '56
The Dixon Family (n)
Leslie B. Durant '39

Philip R. Faurot '51
Kenneth W. Fisher '64
GAMCO Asset Management Company
Robert D. Goldbach '58
Jacques B. Hadler Sc.D. (Hon.)
A. Dudley Haff '37
Robert K. Kistler '46
Duane H. Laible '62
Willard V. Markey '35
Robert G. Mende '51
R. Keith Michel '73
Owen H. Oakley '37
Richard Pomfret (n) '62
Lester Rosenblatt, Sc.D. (Hon.)
The G. Unger Vetlesen Foundation (n)
The Glosten Associates, Inc. (n)
Richard W. Thorpe '55
Anthony A. Urbanelli '75

Founding

\$100,000 to \$249,999

Mario Iacobucci Andrea '39
Carl B. and Florence H. Aster '25
Joyce P. Bethge, (Hon.)
David M. Bovet '70
Donald L. Caldera '57
Drs. George and Mary Campbell
Jay P. Carson '73
Richard C. Celotto '73
R. Perry Connell '97 (n)
Alexander Delli Paoli '50
Thomas F. FitzGerald '34
Thomas W. Gillette '52
George A. Gilmore '57
Lawrence R. Glosten '40
Alison and Hal Granger, P'14
Frank J. and Anne Graziano (Hon.)
Clifford E. and Flora Hoitt '34
Ronald K. Kiss '63
Charles Kurz II (Hon.)
Horton W. Lain '55 (n)
Timothy S. Leach '91
Eric W. Linsner '70 (n)
MJS Foundation
John A. Malone '71
Thomas N. Manuel '54
Mark F. Martecchini '79
Gregory M. Matzat '89

Roy P. McPherson '44B
Metro Machine Corp.
Walter H. Michel, Jr. '39
John W. Newcomb '66
Huntington Ingalls Newport News
Robert H. Owens '44A
Randolph H. Pritchard 1918
Marian R. Quick
Stanley L. Quick '44A
John K. Roper '53
Bruce S. Rosenblatt (Hon.)
Clayton E. and Joan Royce '46
George A. Sawyer
Steven T. Scalzo
Joseph A. Schetz '58
Daniel Schorsch '58, GP'19
Victor E. Scottron '36
Joseph A. Signorelli '54
James E. Steele '41
Walmer E. Strobe '42
Reuben W. Taylor, Jr. '55
Thomas S. Taylor '53
The Bostonian Society/Boston Historical
The Society of Naval Architects
& Marine Engineers
William duBarry Thomas '51
TK Foundation/Orange County
Community Foundation
Homer N. Wallin, Jr. PG'62
Edward B. Warchol '37
Lawrence W. Ward PG'51
Edward R. Weber '42
Peter F. Weber '74
Thomas A. Wheaton '77
Geoffrey D. M. Wilkie '82
Charles Zeien '50 (n)

Sustaining

\$50,000 to \$99,999

Catherine M. Anderson '93
Barbara L. Aster (n)
George W. Birkhead '63
F. Roland Bjorklund '66
Boeing Matching Gift Program
Bollinger Foundation
Donald T. Bollinger
Thomas H. Bond '45
Joseph L. Brennan (n) '79



New member (n) - Honorary alumnus/a (Hon.) - Spouse of deceased alumnus/a (S) - The names of deceased donors are italicized.

Peter C. Bryn '06
 Thomas and Susan Burns, P'08
 Steven G. Buttner '70
 Chevron Humankind Employee Funds
 Alvin E. Cox '41
 Paul H. Diehl '56
 Edward C. DuMont
Stephen C. Dvorak '50
 Richard G. Eddy '55
 Frederick P. Eisenbiegler '46
 S. Allen Face III '70
 Peter B. Fontneau '68
Fred Forrest
 Foss Maritime Co.
 Foss Marine Holdings, Inc.
 John P. Gallagher '74
 James N. Greenlees '72 (n)
 Jerrier A. Haddad (Hon.)
 James Harvie '55
 Paul W. Hayes '54
 Robert J. Healy '83
 Manuel G. Hontoria '88 (n)
 William E. Jenkins
 Jewish Communal Fund/Gabelli Foundation
 Stephen R. Judson '74
 Edmund T. Klemmer '44B
Ulrich H. Koch '55
Joseph A. Kochanczyk '41
 Jennifer E. Kollmer '91
 Thomas E. Koster '67 (n)
Carl E. Kreidler 1920
 Kurz Foundation
Dorothy J. Kurz
 Jon J. LaBerge '76
Maurice J. Laurier '50 (n)
 Gabriel F. Lefebvre, Jr. '52 (n)
 Lockheed Martin Corporation Foundation
 David and Rebecca Louie, P'17 (n)
 M. Rosenblatt & Son, Inc.
 Endel Mann '60 (n)
 Wayne D. Martin '67
Albert M. Martinson, Jr. '53
 Justin H. McCarthy '55
 Gregory B. Mendenhall
Richards T. Miller '40
 Richard P. Neilson '70
 Jake M. Neuman '93
 Francis X. Nicastro '56
 Steven Pagan '88
 Jennifer B. Panosky '85 (n)
 John R. Paul '69
 Joseph H. Pyne
Edward Renshaw '44A
 Scott Richards '77
 Eugene Schorsch '52
 Alfred H. Schwendtner '54
 SeaRiver Maritime, Inc.
 Peter A. Silvia '62
 Ted A. Slotwinski '73
 John A. Springer III '82
 Steve M. Stone '06

David and Christine Stone, P'06
 Winston B. Sutter '53
 Luther Tai
 The Ambrose Monell Foundation
 Michael W. Toner
 Christopher N. Tupper '75
 John D. Van Buskirk '76 (n)
 Charles G. Visconti D.C.S. (Hon.)
 Webb Alumni Association
Capt. and Mrs. William E. Weisert, USN (Ret.)
 W. Brett Wilson '75
 Steven F. Wolgamot '69
Adin K. Woodward '43

Leadership

\$25,000 to \$49,999

Benjamin B. Ackers '97
 Ronald J. Altmann '63
 Jonathan R. Amy '70 (n)
Paul E. Atkinson '42
 Paul and Julie Backas, P'16
Montgomery Banister '44A
 William B. Bartling '13 (n)
 George J. Berger '66
 BMT Designers and Planners
 Robert H. Bolling '97
 Judson B. Broome '91
Timothy N. Buffum '44A
 Joseph A. Burns '62
Edward J. Campbell
Lincoln D. Cathers '56
 Nancy F. Cathers
 David S. Chapman '72 (n)
 Paul D. Chapman '67
 Louis T. Codega '78
 Roger H. Compton '61, PG'64
 Con Edison
 Charles N. Corrado '83 (n)
Michael Costagliola '42
 Victoria Dlugokecki '88
 Philip S. Douthit '72 (n)
R. Peaslee and Virginia DuMont '32
Kathleen W. Eddy
 John L.R. Edgar III '87 (n)
 Enron Corporation
 Ms. Courtney C. Ewing (n)
 ExxonMobil
James A. Fay '44B
 R. Mark Forssell '55
C. Larry French Sc.D. (Hon.)
 Geoffrey D. Fuller '72
 Anne M. Fullerton '99
 Peter A. Gale '59
 Pastor Austin E. Ganly
Edward F. Ganly '36
 Charles Garland '58
 General Dynamics NASSCO
 General Electric Corporation
 Patrick J. Gilmartin (Hon.)
 Richard A. Gilmore '77
 Douglas M. Gluntz '57 (n)
 Leslie M. Gray III '68
 David L. and Penelope Greene, P'95
 Christoph A. Grueneis '92
 William B. Hale '78
Howard M. Hardy '38
 Scott and Jan Harlan, P'12
 Theresa Haven '92 (n)
 Mark R. Henry '62 (n)
John G. Hill
William C. and Anne P. Hindle, Jr.
John D. Holman
 Albert S. Hove '55
 William C. Hurt III '59
 Illinois Tool Works Foundation
George A. Johnson '36
 Peter A. Johnson '56
 Ralph E. Johnson '68
Frank Joyce '44A
Anthony Karpich
 David H. Klings (Hon.)
Frank A. Kuntz '40
 Alfred Kurzenhauser '51
George Laing 1912
 David S. Lawson, Jr. '55
Carl E. Lindholm, Jr. '50
 Bridget F. Lisnyk-Washlack (Hon.), 63S
 Lloyd's Register of Shipping
 Christopher T. Loeser '70 (n)
Harrison T. Loeser '43
Carolyn MacCormack
Edward M. MacCutcheon '37
 Maritrans, Inc.
 Marsh & McLennan Companies (n)
 Joel S. McMinn '75
 Paul B. Mentz '64
 Eugene R. Miller, Jr. '64
 Brent J. Morrison '11 (n)
James A. Mulcahey '42
 Richard A. Mulford '61
John J. Nachtsheim '47
 Ronald C. Olander '55
Warren W. Oliver, Jr. '50
 Jay E. Paris '64
Robert V. Pierce '50
 Charles G. Pieroth '61, PG'64
 Philip M. Poullada '78
 Irving G. Raphael '67
 Raytheon Systems Company/Matching Gifts
Paul W. Risseuw '65
 David R. Rodger '63
 Rolls-Royce Naval Marine Inc.
 James W. Royle, Jr. '66
 Kit Ryan '67
 Richard Schmitt '62
 Lewis R. Sheldon III '73
 Steven C. Shepstone '77
 The Gerda and Ole Skaarup Foundation
 Richard A. Smith '76
 Richard A. Smith '03
 Paul G. Snyder '69
 Richard T. Soper (Hon.)
Walter W. Spalckhaver '22
 David G. St. Amand '77
Henry B. Suydam '43
Robert Taggart '42
 Matthew P. Tedesco '91
Philip Thiel '43
Charles E. Thornhill '43
 Edmund G. Tornay '56
 Robert Turoff, P'15
 Stephen A. Van Dyck
 Paul G. Vibrans '71
 Edward V. Vienckowski '78
 Robert J. vom Saal '67
 Abbott D. Weiss '63
 Michael J. Whalen '79
Robert L. Williams '54
 Meldon J. Wolfgang IV '93 (n)
Frank W. Wood '40
 Robert B. Zubaly '55
 Anonymous (2)



New member (n) - Honorary alumnus/a (Hon.) - Spouse of deceased alumnus/a (S) - The names of deceased donors are *italicized*.

Staying Connected through Webb



George Mouravieff, with his children, Andrei '09, Ilya '16, and Lidia (Needham)'11, and wife, Tatiana.

The information highway is all around us, to the point that we live and breathe it without even giving it a second thought. Almost every aspect of our lives, whether personal or business, is somehow connected to learning or sharing by some means of communication that often involves Wi-Fi or the internet. The less frequent, by percentage of time, means of communication has become the phone call, or face-to-face conversations that include a heartfelt handshake as you look into each other's eyes. Many cultures around the world have common practices of exchanging hugs and kisses on the cheeks as greetings, even with new acquaintances.

Personal communication is a major component of the Webb Parents Association mission statement. The opportunity for us to share information among ourselves is limited only by how many of us there are. We communicate like no other college or university in the world; WPA members, staff, administration, alumni, and the rest of the Webb Family are always available and willing to engage at a moment's notice. We value the face-to-face contact that makes one truly appreciate the Webb Family bond. The support we offer each other—intellectually, emotionally, and financially, or whether to just merely share our thoughts or concerns—is all part of the Webb experience.

This is Webb's information highway, and it may very well include a heartfelt handshake, and if you're lucky a hug...

- by George Mouravieff P'09, P'11, P'16

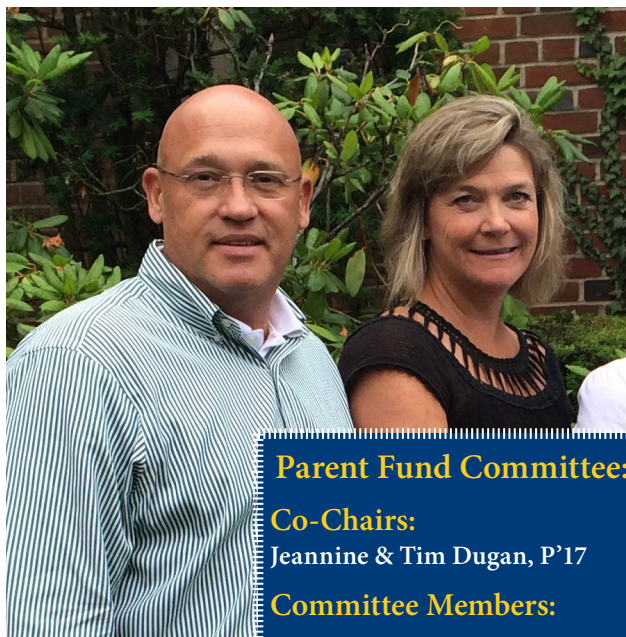
Webb Parent Annual Fund: Reaching New Heights

Webb parents are an extraordinary group of people. They are well aware that Webb students are part of something special. In spite of various commitments, they generously devote time, energy, and resources to the Parent Annual Fund.

Fundraising can be a challenging though rewarding endeavor, but the knowledge that these efforts have a direct impact on student education makes all the work worthwhile. It's particularly rewarding when these efforts produce results, and this has consistently been the case for the past several years. Last year, Webb parents generously contributed nearly \$136,000—a Webb record! We are very grateful to the Parent Fund Committee, particularly to the outgoing Co-Chairs, Jeannine & Tim Dugan P'17.

For 2016-17, we are thrilled that Jen '91 and Tom '89 Waters P'20 are leading the parent charge as new co-chairs. Please see the next page to learn more about the Waters family, but I can tell you that they are no strangers to "paying it forward." As Webb alumni, they have a unique understanding of the Webb family. Under their leadership, Webb is poised for another successful year!

- by Anthony R. Zic



Tim and Jeannine Dugan P'17 during the Parent's BBQ.

Parent Fund Committee:

Co-Chairs:

Jeannine & Tim Dugan, P'17

Committee Members:

Agnelo & Olen Dias, P'19
Linda & John Gagliardi, P'18
Jean & Lester Hale, P'18
Maricar & Chris Harris, P'18
George & Polly Lawson III, P'17
Corrine & Rusty Mills, P'16
Karen & David Przelomski, P'16
Kathleen Bracken & David Weathers P'19
Chris & Lisa Windham, P'19

2015-16 Parent Annual Fund Results

Class	Overall	2019	2018	2017	2016
Total Gifts	\$ 135,939	\$ 44,437	\$ 25,572	\$ 33,280	\$ 32,650
Average Gift	\$ 2,193	\$ 2,222	\$ 1,598	\$ 2,377	\$ 2,721
% Participation by Family	68%	80%	70%	62%	58%



JEN AND TOM WATERS ACCEPT POSITION AS CO-CHAIRS OF WEBB PARENT ANNUAL FUND

With their last name, and her maiden name being Kehl (pronounced “keel”), one wonders if the daughters of

Jennifer '91 and Thomas '89 Waters were simply destined for the marine industry. First-born Alli is studying naval engineering at Stevens Institute, and Linda is now a member of the class of 2020, the first offspring of two graduates to enroll at Webb.

Jen and Tom met in August of '87 at the beginning of Jen's freshman year. While they did not date for that entire year, they enjoyed each other's company immensely and wound up becoming the best of friends. Says Jen: “Every time I saw Tom on the main deck, in the pub, in the reading room or wherever - it was like a magnetic attraction. We would constantly find ourselves together, whether we were just talking, playing cards, or running out to get a slice of pizza from Sal's, Uncle Dai's cuisine, or even a midnight souvlaki run. And yes, sometimes we even did work together; Tom would make fun of me for doing my homework in color.” After returning to Webb for the next academic year, they did actually begin dating. Apparently, they were the last to know that they were destined for each other, as many at Webb already thought they had been romantically involved.

As to any regrets about their time at Webb, both plead short-term memory loss.

Tom survived two years of naval architecture under now former-Dean Rick Neilson, as well as the tortures devised by several still toiling at Webb: Professor Richard Harris and Professors Emeritus Jacques Hadler and Ed Wiggins. Upon graduation Tom went to work for NAVSEA, detailed to the United States Naval Academy Hydromechanics Lab, working for now Webb Dean Emeritus Roger Compton. In 1993, he joined the Band, Lavis & Associates performing high-speed craft design and supporting the LCAC program. Two years later Tom went to work for the Coast Guard where he is currently a Naval Architect at the USCG Marine Safety Center, primarily conducting regulatory plan review for commercial vessels.

After her graduation from Webb, also having survived Professors Harris, Hadler, and Wiggins, Jen continued her education at Stevens Institute of Technology, earning an M.Eng. and a Ph.D. in Ocean Engineering. While at Stevens, Jen received a phone call from (guess who?) Roger Compton, then Professor of Naval Architecture and Director of USNA's Hydromechanics Lab. Professor Compton called to tell her there was a faculty position

opening and encouraged her to apply. One of Jen's letters of recommendation for the USNA faculty position application came from her former Professor Jacques Hadler, and it was only then that Jen realized that Professor Hadler was an alum from USNA's class of 1941, which is celebrating its 75th reunion in 2016. With the backing of Roger Compton and the endorsement of Jack Hadler, Jen joined the Naval Academy faculty in 1994 as a research instructor in the Naval Architecture and Ocean Engineering Department. She was promoted to Assistant Professor in 1995, Associate Professor with Tenure in 2001, and to Full Professor in 2008. She is currently the Associate Dean for Academic Affairs, and still teaches periodically in the Naval Architecture & Ocean Engineering department. Her current position also involves oversight of the academic affairs of all 4,500 students, more than 30 major programs, and all of the academic departments, the academy's comprehensive core curriculum, the faculty-led advising program, and the Academic Center/academic support center and facilities.

Jen has served on Webb's Board of Trustees for two years, working with the Development Committee as well as the Academic and Student Affairs Committees. Recently, she was approached by President Michel and asked if she and Tom would be willing to serve as co-chairs of the Parent Annual Fund. Keith explained the fund's history and the recent successes of a more structured approach, first implemented by former Parent Fund Co-Chairs Alison and Hal Granger. Jen knew she wanted to help, but had to ask Tom first. They immediately agreed that it was something they would be happy to do for Webb. One of their concerns was that this effort had already yielded near 80% participation in the past, and they knew they would face the daunting task of maintaining that success, or perhaps even growing it. So to Jen's question to Tom about accepting the role, his rather amused response was: “How could I say no?”

As to why their daughter Linda chose Webb over the other excellent schools she was considering, Jen and Tom plead ignorance. They are both advocates of their children choosing their own paths, and they neither encouraged nor discouraged Linda from choosing Webb. While The Cooper Union was one of the final competitors, there may have been other factors at play. As Jen says, “Linda began visiting Webb in utero.” Jen and Tom have no real concerns about their daughter attending Webb, other than the normal parental angst concerning children leaving home, and feel she is far better aware of, and prepared for, the rigors of an intense engineering education.

Please welcome the Waters, as they take on new challenges in support of Webb Institute.

- by Richard P. Neilson '70



The Heritage Society: **Never Too Early, Never Too Late**

Professor Jacques Hadler (honorary alumnus) and Christopher Johnson '18 are the Heritage Society's eldest and youngest members, respectively. In between these two fine men are 118 living members who have recognized Webb in a very special way—by including Webb in their future giving plans.

Webb's Homecoming once again featured a Heritage Society reception, an event always received with great enthusiasm, and one that annually tests the capacity of the President's house for a seated dinner and culinary delights, courtesy of the first lady, Peggy Michel. Professor Hadler and Christopher Johnson were joined by seventy guests, including ten student volunteers, helping Mrs. Michel prepare and serve a feast. Mrs. Jill Compton lent a helping hand by providing bartending services during the "social hour."

President Keith Michel welcomed all guests with opening remarks and shared preliminary plans for once-in-a-generation *Campaign* infrastructure enhancements. John Couch, honorary alumnus and Heritage Society member, followed thereafter to share heartfelt insights from four generations of Couch family members, and what it meant for them to be a part of the Webb family. Art Burr '54 and Joe Cuneo '57 followed with powerful testimonies of their own commitment to Webb, and as a call to action for all Heritage Society members, the importance of recruiting the rest of the Webb family to make the same commitment.

The future of Webb rests in large part on our ability to recruit future members of the Heritage Society. With the launch of the *Campaign for Webb*, increasing membership in the Heritage Society becomes more important than ever, as the \$40 million *Campaign* goal includes planned gifts for those 70 years or older by the end of the

Campaign (June 30, 2019). This *Campaign* has already displayed the impact of the Heritage Society—more than \$20 million of the \$36.5 million in present-day or future commitments have been made through planned giving vehicles that define Heritage Society membership.

With John Malone '71 recently on board as the new Chairman of Planned Giving, we hope to grow this membership one at a time...it's never too early or too late!

We wish to thank those who have followed in the path of William H. Webb!

- by Anthony R. Zic



2015-2016 Donations - Heritage Society

It's an elite group—207 members of the Webb family who are part of the Heritage Society.

Legacy gifts are the cornerstone upon which Webb was built, and they will continue to play a vital role in Webb's finances. These thoughtful gifts provide Webb the fiscal strength and security needed for future generations.

The distinctive nature of planned gifts is that they are not intended for today, but rather are forward-thinking, and help sustain Webb well beyond any single donor's lifetime.

As a small token of our appreciation, we provide each member of the Heritage Society with a limited edition of William Webb's Clipper Ship *Young America*, suitable for framing. We have also recently developed a commemorative pin for all members which we will soon share.

It's never too early to start thinking about becoming a member; Webb graduates as recent as members of the Class of 2018 have joined Webb's Heritage Society!

There are many ways to give substantial support to Webb Institute while protecting and enhancing your family's financial situation.

To learn more about planned giving visit <http://webbinstitute.plannedgiving.org> or call our Development Office at (516) 759-2040.

Mario Iacobucci Andrea '39	Richard A. Gilmore '77	G. James and Barbara	Eugene Schorsch '52 (n)
Albert L. Balestiere '47	George A. Gilmore '57	Lippmann '51	Alfred H. Schwendtner '54
Montgomery Banister '44A	Lawrence R. Glosen '40	John A. and Georgette	Alexander L. Scott '10 (n)
Sherman H. Barber '34	Richard A. Goldbach '58	Livingston '24	Victor E. Scottron '36
David B. Benson '56	Robert D. Goldbach '58	J. Lewis and Kate I. Luckenbach	Dorothy Seeholzer
Victor W. Bethge '53, GP'05	Alison and Hal Granger, P'14 (n)	John A. and Amy Malone '71 (n)	James J. Shaughnessy '89 (n)
Joyce P. Bethge (Hon.)	Samuel Granger '14	Thomas N. Manuel '54	James S. Shelton '30
William J. Blanton, Jr. '71	Leslie M. Gray III '68	Henry S. Marcus '65	Steven C. Shepstone '77
Thomas H. Bond '45 (n)	Frank J. and Anne Graziano (Hon.)	Willard V. Markey '35	Paul Sieswerda
David M. Bovet '70 (n)	John L. Greene PG'55	Albert M. Martinson, Jr. '53	Joseph A. Signorelli '54
W. Porter Bratten III '08	James N. Greenlees '72 (n)	Walter C. Maximowicz '36	Peter A. Silvia '62
Arthur A. and Marilyn Burr '54	Gregory M. Griffin '77	Joseph Mazurek (Hon.)	Elizabeth M. Singleton '07
Theresa Burr	Jacques B. Hadler (Hon.)	Justin H. McCarthy '55	Richard A. Smith '76
Eileen Caddell	A. Dudley and Ruth Haff '37	H. Smith McKann '38	J. William Smith '63
Donald L. Caldera '57	Barbara Hamlin (Hon.)	Joel S. McMinn '75, P'09	Mr. and Mrs. John F. Stahlin P'66
Hayden A. and Pamela Carney '58	Norman A. Hamlin '44B	John J. McMullen (Hon.)	Richard A. and Suzanne Stearn '39
Robert M. Cashman '40	James Harvie '55	Roy P. McPherson '44B	James E. Steele '41
Lincoln D. Cathers '56	Paul W. Hayes '54	Robert G. Mende '51	Marjorie S. Stockdale
Richard C. Celotto '73	Kenneth L. Heitner '64	R. Keith and Peggy Michel '73	Walmer E. Strobe '42
Paul D. Chapman '67	David A. Helgerson '77	Walter H. Michel, Jr. '39	Gailmarie Sujecki (Hon.)
W. Edward Christiansen '58	Mark R. Henry '62	Kathleen Cain Minnich '07	Robert Taggart '42
William A. Cleary, Jr. '51	James J. Henry '35	Brent J. Morrison '11	Thomas S. Taylor '53
Roger H. Compton '61, PG'64	Halsey C. Herreshoff '55	Edmund C. Mortimer PG'63	Catherine A. Tedesco '94
Charles N. Corrado '83 (n)	William C. and Anne P. Hindle, Jr.	James G. and Helen S. Motley 1914	Matthew P. Tedesco '91
Michael Costagliola '42	Clifford E. and Flora E. Hoitt '34	John J. Nachtsheim '47	Philip Thiel '43
John C. Couch D.C.S. (Hon.) (n)	William J. Hooker '53	Richard P. Neilson '70	William duBarry Thomas '51
Jon Couch (n)	Allen N. and Cordella M. Hoyt '36	John W. Newcomb '66	Daniel H. Thompson '57
Richard B. Couch '33	Peter E. Jaquith '65	Frank J. Nicosia 1918	Richard W. Thorpe '55
John O. Crafts 1902	Christopher R. Johnson '18 (n)	John C. Niedermair 1918	Stephen R. Towne '40
Joseph J. Cuneo '57	Ralph E. Johnson '68	Warren W. Oliver, Jr. '50	Lloyd M. Trefethen '40
Jerry W. Cuthbert '56	Roy E. Johnson '62 (n)	Robert H. and Harriett Owens '44A	Arthur H. Trotter 1901
Charles R. and Lark D. de Cuir	Otto J. and Marie R. Karst	Jennifer B. Panosky '85	Daniel Turoff '15 (n)
Philomene J. DeHart	Ronald K. Kiss '63	Jay E. and Phyllis Paris '64	Anthony A. Urbanelli '75 (n)
Victor J. Dietz '35	Robert K. Kistler '46	David R. Pedrick '70	Roxie D. Vaughan
Hampton K. Dixon '11	Edmund T. Klemmer '44B	Richard Pomfret '62	Charles G. Visconti '55
Satchel Douglas '15 (n)	David H. and Jean R.	Philip M. Poullada '78	Robert J. vom Saal '67
William V. Duggan	Klinges (Hon.)	Randolph H. Pritchard '18	Homer N. and Katherine
R. Peaslee and Virginia DuMont '32	Jennifer E. Kollmer '91	Stanley L. and Marian R.	Wallin, Jr. PG'62
Stephen C. and Margaret Dvorak '50	Carl E. Kreidler '20	Quick '44A	Edward B. Warchol '37
Kathleen W. Eddy	Edwin Kreidler	Edward Renshaw '44A	Lawrence W. Ward PG'51
Richard G. Eddy '55	Stefan Kuczera '15	Scott Richards '77	Charles A. Ward 1904
Robert L. and Irene Eddin '54	Frank A. Kuntz '40	Geoffrey S. Rivinius '75	Abbott D. Weiss '63
Frederick P. Eisenbiegler '46	Charles Kurz II (Hon.)	David R. Rodger '63	Matthew R. and Tisha
Frank P. Falci, Jr. '54	Dorothy J. Kurz	John K. Roper '53	Werner '95, PG'97
Philip R. Faurot '51	Jon Jay LaBerge '76	Robin S. Rose '09	Robert M. Wilkinson '51
Kenneth W. Fisher '64	Duane H. and Diane Laible '62	Lester Rosenblatt (Hon.)	W. Brett Wilson '75
Thomas F. FitzGerald '34	Horton W. Lain '55	Clayton E. and Joan Royce '46	Allan N. Wilson '44B
George F. Fonger '29	George Laing 1912	James W. Royle, Jr. '66	Ann B. Wilson
Fred Forrest	Maurice J. Laurier '50	John W. Russell and Mary E.	Stefan T. Wolczko '09
R. Mark Forssell '55	Harold F. and Marguerite Lenfest	Fellows '67	Frank W. Wood '40
Peter A. Gale '59	D. William and Gail Lerch III '52	Albert W. Schede 1910	G. Gilbert Wyland '26
Edward F. Ganly '36	Christopher Licato '15 (n)	Joseph A. Schetz '58	Herman D. Pollock Family
Charles Garland '58	Carl E. Lindholm, Jr. '50	Charles J. Schoefer '35	Foundation (n)
Jacob M. Genauer '10	Eric W. Linsner '70 (n)	Daniel Schorsch '58, GP'19	

New member (n) - Honorary alumnus/a (Hon.) - Spouse of deceased alumnus/a (S) - The names of deceased donors are italicized.

DONALD T. “BOYSIE” BOLLINGER



A LIFE BEYOND SHIPBUILDING

Donald T. "Boysie" Bollinger with his wife, Joy, at Commencement this past June.

Donald T. “Boysie” Bollinger has dedicated his life to the industrial, social, and historical well-being of the state of Louisiana and the nation. He graduated from the University of Louisiana at Lafayette with a degree in Business Administration and went to work for the Bollinger Machine Shop & Shipyard, founded in 1946 by his father, Donald G. Bollinger, who served as chairman until 1985 when Boysie took over as Chairman and Chief Executive Officer. Under Boysie, the company eventually was renamed Bollinger Shipyards, Inc. and branched out to multiple locations as a full-service marine construction and ship repair company. Bollinger Shipyards, new construction portfolio includes a wide variety of vessels such as patrol boats; increasingly sophisticated offshore supply vessels (OSVs); liftboats; tugs; barges; and specialty vessels such as dredges, dive support vessels, and power barges.

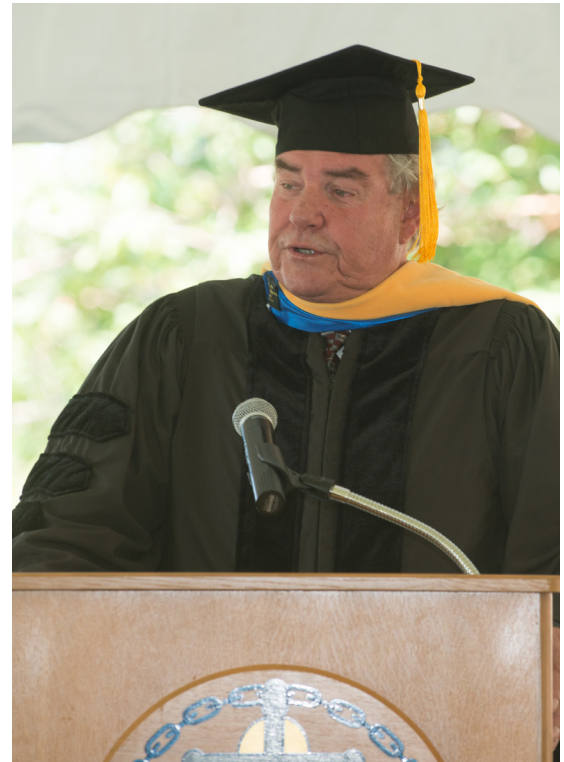
During his tenure in the shipyards, Boysie is proudest of the re-tooling of the yard facilities which resulted in the improvement in the quality of the shipyards’ products and the positive relationship established with the U.S. Coast Guard. Bollinger Shipyards has built or is building 200-plus vessels for the USCG over the past 30 plus years, including Island Class, Patrol Coastals, Coastal Patrol Boats, and Fast Response Cutters. Another major accomplishment has been the growth in the repair business. Bollinger Shipyards is now the largest vessel repair firm in the Gulf of Mexico, with 10 shipyards stretching from New Orleans to Houston. The company’s 30 dry docks are key to making rapid repairs to the vessels that serve the offshore oil industry, as well as the country’s coastwise and brown-water fleet. Boysie gives full credit to the abilities and dedication of

Bollinger’s thousands of employees. In December 2014, Bollinger Shipyards was sold to then Chief Operating Officer Ben Bordelon and the family that owns Edison Chouest Offshore. Mr. Bordelon has served in a number of positions at Bollinger; as a board member since 2002, and he has assumed the duties of chairman, president, and chief executive officer. He is Boysie’s nephew and the grandson of the yard’s founder.

But Boysie’s life has not been limited to his career in the marine industry. He has a passion for philanthropy and firmly believes in giving back to local communities and beyond. He has devoted time to professional and civic organizations and has served as a member of the boards of numerous foundations, including the U.S. Coast Guard Foundation, National Petroleum Council, and American Battle Monuments (under the administration of President George W. Bush). He has also served as past chair of the Shipbuilders Council of America, the National WWII Museum, the Nature Conservancy of Louisiana, the United Way of South Louisiana, National Ocean Industries Association (NOIA), Nichols State University Foundation, First Bank and Trust, Port of New Orleans, and the New Orleans Region of the Boy Scouts of America. He has received numerous awards for these activities. In addition to being designated a Louisiana Legend by Louisiana Public Broadcasting, he has received the Distinguished Citizen Award from the Boy Scouts of America; and, the C. Alvin Bertel Award, given to an individual who promotes the success of the Port of New Orleans. Boysie has also been honoured by local Chambers of Commerce and volunteer groups with the Entrepreneur of the Year Award, Junior Achievement Laureate Lifetime Achievement Award, the Woodrow



Above: The Bollingers with President Michel and Dr. George Campbell Jr. at Commencement. Right: Boysie addressing the Class of 2016 at Commencement.



Wilson Award, New Orleans Propeller Club's Maritime Man of the Year Award, and ACG Louisiana's Lifetime Achievement Award.

Of particular interest to Boysie and his wife, Joy, was the establishment of the National D-Day Museum in New Orleans, which has become the National World War II Museum. They supported the museum from its inception, and their generosity has been used to add an iconic architectural piece to the museum's campus—the Canopy of Peace, symbolizing the hope and promise of the end of WWII.

Boysie has supported Webb for many years by employing student interns and graduates. Ex-Commandant of the U.S. Coast Guard Robert (Bob) Kramek recommended to Webb's Board of Trustees that Boysie be elected a member. He served on the Board from 2006 to 2015 providing guidance, time, talent, and has very generously contributed to Webb's mission and strategic plan. He feels his strongest contribution to the Webb Board was encouraging an improved focus on leadership training and is gratified by the continuing efforts in that area. Boysie believes the technical aspect of Webb's education is excellent and creates high industry demand. He believes there is positive leadership at Webb where the small size leads to comradery among the entire community—students, faculty, staff, alumni, parents, and board members. He would like to see Webb augment the endowment to the point where it not only ensures free tuition for the future but also considers reinstating free room and board.

During the commencement ceremony on June 18, 2016, Webb conferred upon Boysie the degree of Honorary

Doctor of Science. In his address to the graduates, he expressed confidence that they were especially well prepared for the challenges that lie ahead. "I've spent my entire career in the marine industry," he said. "I've seen it wonderful and I've seen it miserable. It's important you are able to maneuver through those wonderful times and those miserable times, because they will be coming. Whatever career path you think you have in your head now is not where you're going to end up, because the world is not that clear of a blueprint, and your life is not as perfect as the science you have learned over the past four years."

Boysie does not believe in "hanging on." He feels he was asked to join the Webb Board because of his position in the industry, and, having sold his interest in the shipyards, has resigned from all maritime-related boards, including Webb's. His nephew Ben, the new CEO of the yards, has recently been elected a member of Webb's Board of Trustees.

What comes next in the retirement for someone like Dr. Boysie Bollinger? He has several investments to mind and remains very active in several non-profit organizations such as the Nature Conservancy, the Boy Scouts, and, of course, the National WWII Museum. There is no doubt a man of such accomplishment, ability, and energy will not remain idle. Webb is grateful for all he has done for our students, graduates, and for the Institute itself, and we wish him the very best for the future.

- by Richard P. Neilson '70

SCHOLARSHIPS & ENDOWMENTS

Webb Institute's unique financial model is predicated upon our ability to attract funds that support our students, faculty, and staff.

Webb is the only full-tuition scholarship private undergraduate program of its kind in the country, and it is critical that we are able to sustain this model for students who are academically and personally prepared for the Webb challenge.

From the start, Webb Institute has relied upon its endowment, initially through funds provided by William H. Webb and later through the generosity of alumni, family, and friends. The concept is as relevant today as it was in 1889, when William H. Webb established the original endowment. Webb is supported by a variety of funds, including endowed professorships, scholarships, and other funds designated for various purposes.

We thank each and every member of the Webb family for making contributions that support our endowment.

Because of your support, we are able to attract and retain the finest students and faculty.

- by Anthony R. Zic



ENDOWED AND NAMED CHAIR & PROFESSORSHIPS

- American Bureau of Shipping Chair of Naval Architecture and Marine Engineering
- James J. Henry Professorship of Naval Architecture
- John J. McMullen Professorship of Humanities
- Mandell and Lester Rosenblatt Professorship of Marine Engineering
- Shirley N. and Stephen B. Towne Professorship of Ship Design

TUITION SCHOLARSHIPS

- American Bureau of Shipping Scholarships
- Arthur Burr '54 Scholarship
- Philip Faurot '51 Scholarship
- Kenneth L. Heitner '64 Scholarship Fund
- Allen N. '36 and Cordella M. Hoyt Scholarship
- H. Smith McKann '38 Family Scholarship
- Robert G. Mende '51 Scholarship Fund
- Herman D. Pollock Family Foundation Scholarship
- Philip J. Sims '71 Memorial Scholarship
- Dr. and Mrs. Alfred M. Zeien '52 Student Scholar Endowment

ROOM AND BOARD SCHOLARSHIPS

- Class of 1956 Scholarship
- Thomas B. Crowley Sr. Memorial Scholarship
- R. Peaslee DuMont '32 Scholarship
- Fisher Maritime/Dunderberg Scholarship Fund
- Glosten Scholars Program
- Damon Greenleaf Douglas III Memorial Scholarship Fund
- John J. Hopkinson Memorial Scholarship
- Kurz Family Scholarship
- Jonathan Lance '80 Scholarship Fund
- The League Scholarship
- McMullen Family Foundation Scholarships
- Olsen Family Scholarship Fund
- Charles J. "Corky" Sautkulis '72 Scholarship Fund
- Women's Propeller Club Scholarships

RESTRICTED FUNDS

Supporting the Arts, Facilities, Research, Graduation Awards, Lectures

- Arts & Antiquities Maintenance Fund
- Paul E. Atkinson Prize in Ethics
- Class of 1955 – Visconti Reception Room Upgrades
- Class of 1965 – Library Digitization Fund
- Class of 1966 – 50th Reunion Fund
- Class of 1970 – Scholarship Fund
- Class of 1990 – Jetty Restoration
- Class of 1995 – Waterfront Upgrades
- Jill and Roger Compton Endowment for the Performing Arts
- Jon Couch Estate Infrastructure Fund
- The Richard B. Couch '33 Ship Design Computer Lab and Enhanced Classrooms
- Curran Memorial Prize
- Graduation Award Fund
- The Carol and Jerrier Haddad Library Fund
- Jacques B. Hadler Endowment for Research
- Keeler Memorial Prize (Commencement Award)
- The Charles Kurz II (Hon.) Community Service Award Fund
- Marty Johnson '88 Leadership Fund
- Patrick S. Matrascia Good Shipmate Commencement Award
- Lewis Nixon Memorial Prize (Commencement Award)
- Richard A. Partanen Humanities Award (Commencement Award)
- Student Sailboat Fund
- Webb Landscaping Fund
- Webb Cultural Enrichment Fund
- Charles A. Ward Jr. Memorial Awards
- Webb Mausoleum Conservation – Maintenance and Repair Fund
- Women Recruitment Fund
- Women Student Fund
- Dr. and Mrs. Alfred M. Zeien '52 Lecture Series
- Dr. and Mrs. Alfred M. Zeien '52 Infrastructure Fund

2015-2016 Donations - Gifts In Honor Of, In Memory Of, and WAA Donations In Memory Of:

Gifts in Honor of:

John C. Couch D.C.S. (Hon.)
Peter Morrissey

Richard C. Harris
Brent J. Morrison '11

Jon J. LaBerge '76
John C. LaBerge

Ronald K. Kiss '63
Edward V. Vienckowski

**Lidia Needham '11 & Schuyler
Needham '12**
Stephen Corkery

**Admiral & Mrs. Robert C. Olsen
(Hon.)**
Brent J. Morrison '11

Mary "Molly" Owen Luke (Hon.)
Brent J. Morrison '11

Edwin G. Wiggins (Hon.)
Brent J. Morrison '11

Gifts in Memory of:

James Arnold, P'17
Mr. and Mrs. Timothy Dugan, P'17

Carl B. Aster '25
Barbara L. Aster

William A. Cleary, Jr. '51
Mary E. Cleary

Alan G. Forssell '53
Betty Rose Forssell

Kenneth C. Holmboe '55
Lorna Lynn
Colleen Murray

Ulrich H. Koch '55
Krista Rothmaler

TT Electronics Integrated
Manufacturing Services, Inc.
Hawkins Family
Ashok Shendure

Maurice J. "Whitey" Laurier '50
Rocco Tutela
William and Ruth Webster
Leonard and Harriett Zivin

Larry Liddle
William M. Cannon '65

James A. Lisnyk '63
Bridget F. Lisnyk-Washlack (Hon.),
63S

Fendall Marbury '50
Anne Small

Albert M. Martinson, Jr. '53
Thomas Howard
Thomas S. Taylor '53
Arthur C. Sargent '53
Franz K. Wagner
Eugene Schorsch '52
David Segermark
Victor W. Bethge '53, GP'05

Patrick Matrascia
Brent J. Morrison '11

Iona McAulay
Brent J. Morrison '11

Robert G. and Joan B. Mende
Lisa Senus

Richard A. Partanen
Mrs. Jane N. Partanen, P'87
Brent J. Morrison '11

Cedric Ridgely-Nevitt '39
James N. Greenlees '72

Paul W. Risseuw '65
William Grover



James R. Hancock '67
Henry S. Marcus '65
Dean Risseuw
Hugh J. Risseuw
David R. Zoller
William M. Cannon '65

John Roby
William M. Cannon '65

Thomas J. Sartor, Jr. '54
Thomas D. Sartor

Charles J. "Corky" Sautkulis '72
James N. Greenlees '72

John C. Taylor '72
James N. Greenlees '72

Robert M. Wilkinson '51
James Doran
Wardwell Leonard

Webb Alumni Association Gifts in Memory of:

William E. "Ted" Hanks '44B
Kenneth C. Holmboe '55
Ulrich H. Koch '55
Maurice J. "Whitey" Laurier '50
Fendall Marbury '50
Albert M. Martinson, Jr. '53
Paul W. Risseuw '65
James Bruce Risser, PG'54
Robert M. Wilkinson '51

2016 Admiralty Club

American Bureau of Shipping (ABS)
Cumberland Gas, Inc.
Crowley Maritime Corporation
Gabelli Foundation
McMullen Family Foundation
The Society of Naval Architects &
Marine Engineers (SNAME)
TK Foundation/ Orange County
Community Foundation
The G. Unger Vetlesen Foundation

The Admiralty Club recognizes corporate and foundation partners who support Webb by contribution \$10,000 or more annually. The generosity and loyalty of Admiralty Club members will allow Webb to continue its distinguished excellence in teaching naval architecture and marine engineering.

For more information about becoming an Admiralty Club member, please contact our Development Office at (516) 759-2040.

2015-2016 Donations - Webb Every Year (WebbEY) Program

The Webb Every Year Program (WebbEY) was established during the 2006-2007 Annual Fund Campaign. Initially, this program was created to acknowledge alumni donors for their consecutive years of giving. Eventually, it was extended to include other members within our community and now recognizes family and friends. The WebbEY program was created strictly to recognize our donors' consistency of support, regardless of gift amount.

In order to attain the status of becoming a WebbEY, a donor has to contribute to the Annual Fund for a minimum of five consecutive years. To show appreciation to our consecutive giving donors, Webb Institute now mails a pin to those in the five, 25 and 50-year consecutive giving categories.

Consecutive giving allows Webb to plan for a future with assurance and to continue to be recognized as the premier college of naval architecture and marine engineering. We wish to thank the following contributors for their loyalty and generosity and for attaining the distinct honor of achieving WebbEY status this year.

*The list below constitutes only the newest WebbEY members in each category.
For a full list of WebbEY members, please go to <http://www.webb.edu/webb-every-year-program>*

50 YEARS

Douglas H. Dirks '66
John F. Ince '66
John W. Newcomb '66
James W. Royle, Jr. '66

25 YEARS

Thomas W. Campbell, '69, P'99
Richard A. Gilmore '77
Karl L. Kirkman '65
Eric W. Linsner '70
Irving G. Raphael '67
Lewis R. Sheldon III '73

20 YEARS

Joseph L. Brennan '79
William M. Cannon '65
J. Carey Filling, Jr. '93
Geoffrey D. Fuller '72
Peter A. Gale '59
Nancy A. Harris '88
Jay S. Howell, Jr. '72
Heidi C. Landen-Greene '96
James W. McCoy '57
Eugene R. Miller III '96
Jennifer B. Panosky '85
Richard Pomfret '62
Richard C. Rodi '64X
Catherine A. Tedesco '94
Daniel H. Thompson '57
Stephen and Joan Turns, P'00
Peter F. Weber '74

15 YEARS

Gwendalyn D. Benoit '01
James B. Benoit '01
Jeffrey B. Bowles '00
Jaye Falls '95
Bradley D. Golden '99
Patrick J. Goss '90
James N. Greenlees '72
Brian D. Heberley '01
Russell H. Hoffman '74
John C. Hootman '01
Lucas A. Hurt '01
Alma C. M. Jacobson '01
Donald R. Jacobson '01
Robert and Wilma Kehl, P'91, GP'20
Duncan T. MacLane '78
Jeffrey S. Magrane '89
Gary W. McCue '75
David G. Moorhead '65
Edward A. Rerisi '96
Spencer A. Schilling, Jr. '82
Steven C. Shepstone '77
Lennert O. Thunberg '58
Jeanne E. Torstenson '93, PG'97
Elizabeth A. Tuckel '01
Jason P. Updegraph '01
Stephen J. Van Denburg '01
Peter K. Wallace '93
Britton R. Ward '95
Thomas E. Zielinski '72
Anonymous

10 YEARS

Cameron M. Baker '07
Robert I. Barra '07
Paul D. Chapman '67
Steven M. Cullity, Jr. '07
Mark P. D'Angelo '07
William C. Danilczyk '07
Edward C. DuMont
Robert E. Dvorak '07
David D. Eberhardt '07
Patrick D. Faas '07
Wm. Jason Flatt '98, PG'99
Adam E. Geary '07
William T. Gotta '07
Arthur Cheliotas and Linda Gross-Cheliotas, P'10
Paul and Ruth Guenther
Robert and Susan Henry, P'97
Roy E. Johnson '62
Michael G. LaGrassa '07
Sarah M. Leitner '95
Jonathan D. Leivo '07
Matthew G. Marburger '07
William C. Marrin, Jr. '59
Kathleen Cain Minnich '07
Matthew H. O'Leary '07
Brian J. Petersen '07
Nathan L. Pratt '07
Ryan W. Sadlo '07
Daniel and Vivian Sarles, P'10
Steven T. Scalzo
Benjamin Scott and Patricia Shustock, P'10
Elizabeth M. Singleton '07
Mark Skinner '67X
Joseph Sosa, P'08
William C. Webster '59
David M. Yannitell '67

5 YEARS

Edgar D. Alderson '49
Cathryn A. Bishop '12
Drs. George and Mary Campbell
Michael G.K. Cheng '12
Allan S. Childers '12
Bruce D. Cox '66
Nicholas J. DelGatto '12
Sean R. Doran '12
John A. Fleming '12
Alison and Hal Granger, P'14
Steven Guglielmoni '12
Michael and Kristine Hanford, P'15
Jared P. Harlan '12
Arthur L. Harrison '59
Daniel P. Jacques '87
Orris B. James, Jr. '51X
William E. Jenkins
Krzysztof and Joanna Kuczera, P'15
Alexander C. Landsburg '66X
Andrew Lum '12
Joseph and Muriel Magrane, P'89
Kyle R. Manis '12
Joel S. McMinn '75, P'09
Schuyler J. Needham '12
Dale E. Pederson '12
Dustin R. Rybovich '10
John S. Spencer '69
Mr. Bruce Thompson and Ms. Laurie Geisel, P'15
Michael W. Toner
Robert Turoff, P'15
The G. Unger Vetlesen Foundation
Robert and Elizabeth Weklar, P'15
Daniel and Eleanor Wickenheiser, P'08
Daniel Wilson '09X
Anonymous (2)



2015-2016 Donations - *Matching Gift Organizations*

We are grateful to the organizations that so generously match the contributions of Webb donors, and to the Webb family for taking the steps necessary to maximize the impact of their contributions through matching gifts. Such gifts accounted for approximately 10% of Annual giving in 2015-16, so please be sure to check with your employer to find out whether your contribution is eligible for a matching contribution. Every gift counts! If you have questions, please call our Development Office at 516-759-2040.



Apple Matching Gifts Program
Autodesk Foundation Employee Engagement Fund
BAE Systems
Bank of America Foundation
Bath Iron Works Corporation
BG North America LLC
Biogen MA, Inc.
BNY Mellon Community Partnership
Boeing Matching Gift Program
BP Foundation
Bristol Harbor Group
Caterpillar Foundation
Chevron Humankind Employee Funds
Chevron Shipping Company
Computer Associates Matching Gifts Program
Deutsche Bank Americas Foundation
Dominion Foundation Matching Gift Program
Eli Lilly and Company Foundation
ExxonMobil Foundation
General Dynamics NASSCO
General Electric Corporation
Hewlett Packard Enterprise
HSBC Matching Gift Program
Illinois Tool Works Foundation
Josiah Macy Jr. Foundation

KBR Community Matters Matching Gift Company
Keysight Technologies
Leidos Matching Gift Program
Lockheed Martin Corporation Foundation
Marsh & McLennan Companies
Metal Shark Aluminum Boats
Minerals Technologies Inc.
Moog, Inc.
New York Life Foundation
Northrop Grumman Foundation
Oceanside Mortgage Company
P&G Fund Matching Gift Program
PPL
Quantum Marine Engineering
Raytheon Systems Company/Matching Gifts
Ryder System, Inc.
Siemens Capital Company, LLC
Starr Companies Matching Gift Program
The Bechtel Foundation Matching Gifts Program
The Glostien Associates, Inc.
Voya Foundation
Wakefern Food Corporation
Wells Fargo Educational Matching Gift Program
Workday





Finance & Investments

Fiscal Year 2016 (FY16)

Prepared and Submitted by,
Jon J. LaBerge '76,
Treasurer Webb Institute

In the fiscal year ending June 30, 2016, Webb made great progress against Campaign for Webb goals, held the line on expenses, and improved on its investment performance from the prior year. The absolute level of investment returns, however, continues to disappoint. After a 79% increase in operating revenues in FY 2015, operating revenues increased an additional 99% in FY 2016 powered by over eight million dollars of *Campaign* gifts received or pledged during the year. Excluding major gifts, unrestricted annual giving grew 9.5% over the previous year. Two of the major *Campaign* gifts received this year have been designated for the purpose of building Webb's new academic center and other infrastructure projects on campus. The statement of activities is provided in Table 1.

Table 1: Statement of Activities (Income Statement)

	2016	2015
Operating Revenue (Room & Board, etc.)	\$1,295,009	\$1,226,327
Major Unrestricted Gifts (>\$100,000 each, cash received)	787,368	2,229,556
Major Unrestrictive Gifts (>\$100,000 each, pledged)	-	-
Other Unrestricted Gifts, cash received	1,750,401	1,763,062
Other Unrestricted Gifts, pledged	180,574	-
Infrastructure Gifts, cash received	6,404,101	-
Infrastructure Gifts, pledged	331,329	-
Other Restricted Gifts to Endowment, cash received	229,718	158,828
Other Restricted Gifts to Endowment, pledged	739,977	-
Restricted Gifts, non-endowment (e.g., ABS Scholarship, Class gifts, etc.)	463,872	491,109
Gifts in Kind	-	167,578
Grants	455,653	379,316
Other Income	311,559	90,638
Revenues	12,949,561	6,506,414
Investment Return	(174,551)	(898,903)
TOTAL REVENUE & SUPPORT	12,775,010	5,607,511
Instruction	2,649,160	2,578,329
Institutional Support	2,219,931	2,111,669
Auxiliary Enterprises	978,568	979,701
Student Services	672,679	717,430
Academic Support	727,733	696,384
TOTAL EXPENSES	7,248,071	7,083,513
Change in Net Assets	5,526,939	(1,476,002)
NET ASSETS: Beginning of Year	65,325,151	66,801,153
End of Year	70,852,090	65,325,151

On the expense side of the ledger, the current administration continues to effectively steward costs with an increase in expenses of 2.3%, in line with inflation and with Webb's

performance over the past four years. Total operating expenses for FY 2016 were nearly identical to those in FY 2013, highlighting our concerted effort to control expenditures.

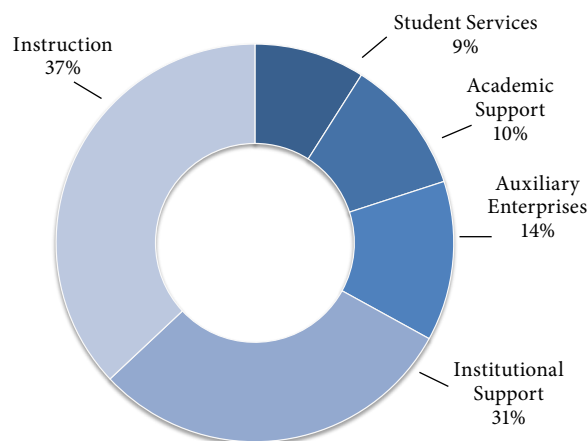
Total Expenses listed in Table 1 include non-cash items like depreciation expense for fixed assets and write-downs of uncollectable pledges, but do not include cash expenditures for capital improvements to Webb's existing facilities. The non-cash expenses and capital expenditures shown in Table 2 adjust expenses to actual cash expended during FY16.

Table 2: Total Expenditures (Operating & Capital)

	2016	2015
Total Expenses	\$7,248,071	\$7,083,513
Less Depreciation Expense	(665,173)	(688,675)
Less Bad Debt Expense	(99,654)	(25,381)
Other non-cash expenses	-	-
Capital Expenditures paid from endowment	454,774	635,387
Capital Expenditures paid by grants	305,550	182,514
TOTAL EXPENDITURES	7,243,568	7,187,358

The chart in Figure 1 illustrates the breakdown of operating expenses by function. Instruction (faculty, laboratories, etc.), Academic Support (non-faculty academics, library, etc.), Student Services (student activities, non-tuition scholarships, etc.), and Auxiliary Enterprises (primarily food service) comprise nearly 70% of overall expenses. In FY16, 55% of operating expenses are for salary and benefits. Other large expense items include food services (7%), utilities (3%), insurance (3%), and depreciation (9%).

Figure 1: Functional Expenses



Webb continues to maintain a strong balance sheet with no long-term debt and with nearly all of its assets held as unrestricted endowment in liquid, marketable securities. In order to improve transparency and segregate assets committed to Webb's new academic center from the assets

held for the long-term endowment, additional details have been added to the balance sheet included in this year's report, identifying assets reserved for the construction project and breaking out Pledge Receivables. See Table 3. Pledge Receivables have, as expected in a campaign, increased significantly over last year based on significant planned (estate) gifts.

Table 3: Statement of Financial Position (Balance Sheet)

	2016	2015
Investments reserved for Academic Center	\$6,499,747	-
Other Investments	53,803,081	55,963,010
Academic Center, net of depreciation	-	-
Other Plant Assets, net of depreciation	8,439,954	8,344,802
Pledge Receivables	1,527,359	612,483
Other Assets	1,134,274	885,311
TOTAL ASSETS	\$71,404,415	\$65,805,606
Payables and other liabilities	552,325	480,455
TOTAL LIABILITIES	\$552,325	\$480,455
NET ASSETS	70,852,090	65,325,151
Total Liabilities & Net Assets	\$71,404,415	\$65,805,606

Webb's endowment incurred an investment loss of 0.1% net of fees and investment expenses during FY16. Although our investment managers performed well against benchmarks and the overall performance ranked us in the top 5% of colleges and universities, the lackluster returns of the equity and fixed-income markets continue to present challenges as we strive for financial sustainability. Webb's five year annualized investment return of 5.7% falls slightly short of our Investment Policy target performance (5.8%) which is 5% over inflation as measured by CPI-U. Even at this level, the five year annualized return is enough to cover our current draw from the endowment and exceeds our blended benchmark performance over the same period of 5.4%. The majority of the endowment continues to be unrestricted, providing the Board and the Administration with the flexibility to ride out market volatility while responsibly maintaining the mission of the Institute and the quality of Webb's programs.

The Investment Committee of Webb's Board of Trustees provides oversight of our investments. John Couch (former CEO of Alexander and Baldwin and Vice Chairman of CM Capital) serves as chairman of the Investment Committee, Alison Granger (CIO of the Hartford Foundation) serves as our vice chair, and Cambridge Associates is our advisor.

As shown in Table 4, the funds committed to the new academic center have been segregated from the rest of the endowment for investment purposes in order to invest them more conservatively and preserve principal, given the fact that a significant portion of those funds will be spent within the next three years.

The total endowment value, including unrestricted, permanently restricted, and temporarily restricted funds but excluding the funds committed to the new academic center,

Table 4: Endowment Cash Flows

Investments reserved for Academic Center	2016	2015
Beginning Balance	-	-
Infrastructure Gifts, cash received	6,404,101	-
Investment Return	95,646	-
Expenditures for construction of Academic Center	-	-
Ending Balance	6,499,747	-
Other Investments	2016	2015
Beginning Balance	55,963,010	58,009,540
Gifts, cash received	1,017,086	2,388,384
Investment Return	(270,197)	(898,903)
Draw to fund Operations	(2,452,044)	(2,900,624)
Draw to fund Capital Improvements	(454,774)	(635,387)
Ending Balance	53,803,081	55,963,010

dropped from \$56.0 million at the end of FY15 to \$53.8 million at the end of FY16. This change reflects major gifts of \$0.8 million, restricted gifts (other than those committed to the new academic center) of \$0.2 million, investment losses of \$0.3 million, capital expenditures of \$0.5 million and draw to support operations of approximately \$2.4 million. The reduction in the draw to support operations from FY15 to FY16 is the result of increases in operating revenues (room and board), unrestricted gifts (annual fund), and grants, which directly offset operating costs; coupled with nearly flat operating costs. The draw on the unrestricted endowment to support operations equates to approximately 5.5% of the average endowment over the preceding 20 quarters. Although a significant improvement over the 6.5% average draw rate we have experienced in the last decade, it still exceeds the current Board approved limit of 4.75%. The Finance Committee is currently considering a reduction of the Board-approved spending limit in response to reduced expectations for investment returns for the next 10 years. The primary goal for the *Campaign* is to expand our endowment to ensure Webb's financial sustainability for future generations.

Table 5 details the changes in Webb's Fixed Assets (made up primarily of our buildings and grounds), which increased from \$8.2 million to \$8.3 million. This number includes approximately \$0.3 million of capital improvements to Webb's lab facilities paid for by government grants and \$0.5 million in refurbishments to faculty housing, but defers some planned renovations to dorm space within Stevenson Taylor Hall until decisions are made regarding the new academic center. The fixed asset figures reflect historic costs net of accumulated depreciation rather than current market value.

Table 5: Changes in Fixed Assets

Plant and Other Fixed Assets	2016	2015
Beginning Balance	\$8,344,802	\$8,197,998
Purchases	760,325	667,901
Depreciation	(665,173)	(688,675)
Gifts in kind	-	167,578
Retirement/Dispositions	-	-
Ending balance	8,439,954	8,344,802



Webb Institute
298 Crescent Beach Road
Glen Cove, NY 11542-1398
www.webb.edu

Webb Institute: *2015-16 Annual Report*

