



# Webb Institute

## 2018-19 ANNUAL REPORT



## THE BEGINNING OF A NEW ERA





## CONTENTS

2	Message from the President
3	Board of Trustees
3	Faculty and Administration
4	Message from the Chairman of the Board
5	Message from the Development Committee Chair
6	Message from the Chairman of the <i>Campaign for Webb</i>
7	<i>Campaign for Webb</i> : Keystone and Cornerstone Donors
8	<i>Campaign for Webb</i> : Results
9-10	<i>Campaign for Webb</i> : Donors
11-14	The Couch Family Academic Center Ribbon-Cutting
15	The 'Most Fortunate' Class of '70 Gives Back
16	The Class of '79 and The Reunion to Remember
17-18	Message from the Dean
19-20	Message from the Chairman of the Webb Alumni Fund
21	WAA Executive Committee
21	Alumni Regional Coordinators
21	Webb Group Leaders and Class Agents
22	2018-19 Class Giving Summary
23-24	2018-19 Donations - William H. Webb Society
25-27	2018-19 Donations - Webb Honor Roll Donors
28	Remembering Johanna Lee Exner '08
29-30	2018-19 Donations - Cumulative Giving
31-32	Message from the Planned Giving Chair
33-34	2018-19 Donations - The Heritage Society
35-36	Scholarships: Making Progress by Getting Closer to 1967
37-38	Scholarships & Endowments
39-40	2018-19 Gifts in Honor of, in Memory of and WAA Donations in Memory of
41	2018-19 Donations - Webb Every Year (WebbEY) Program
42	Message from the Chairs of the Webb Parent Annual Fund
43-44	Finance & Investments Fiscal Year 2019
45	2018-19 Donations - Matching Gift Organizations
46	Message from the Webb Parents Association Chair
46	Message from the Parent of Alumni Fund Chair



Page 11



Page 32

## CONTRIBUTORS

R. Keith Michel '73  
*President*

Matthew R. Werner '95, PG'97  
*Dean & ABS Chair of Naval Architecture & Marine Engineering*

### GRAPHIC DESIGN & LAYOUT:

Kerri Allegretta  
*Director of Media Relations & Communications*

### SUPERVISING EDITOR:

Anthony R. Zic  
*Director of Development*

### EDITORS:

Dr. Richard Harris  
*Assistant Dean & Director of Humanities*

Gailmarie Sujecki (Hon.)  
*Executive Assistant to the President & Director of Alumni Relations*

Josie Wilson (Hon.)  
*Director of Academic Services*

### EDITORIAL & PHOTO CONTRIBUTORS:

Kerri Allegretta	Jon LaBerge '76
David Bovet '70	John Malone '71
Joseph Cascio	George Mouravieff P'09,
Joseph Cuneo '57	P'11, P'16
Kaitlin Cremmins	Jake Neuman '93
Alana Duerr '08	Bruce Rosenblatt (Hon.)
Gill Assoc. Photography	Reneé Tremblay '20
Alison Granger P'14 (Hon.)	Jonathan Wang '20
Hal Granger P'14 (Hon.)	Jennifer Waters '91, P'20
Shanna Hamilton	Tom Waters '89, P'20
Kyle Koleda	Anthony Zic

## OUR MISSION:

To inspire and educate tomorrow's leaders in an extraordinary learning community focused on engineering and design in the marine field.

- Provides a rigorous education in the principles of engineering and the fundamentals of naval architecture, marine engineering and related marine technologies;
- Develops skills that will enable graduates to become leaders in, and make significant contributions to, their chosen profession and the wider community;
- Instills in graduates the highest ethical standards and sense of professionalism;
- Cultivates curiosity in the arts, sciences and humanities, and provides the background and encouragement necessary to support lifelong learning; and
- Perpetuates the values of William H. Webb.



## CELEBRATING MILESTONE ACHIEVEMENTS AND PREPARING FOR OUR NEXT CHALLENGE

**R. Keith Michel '73**  
PRESIDENT

2019 has been an exciting year to serve as your President. You will read about some of the many initiatives undertaken at Webb in the following pages. In these brief remarks, I would like to highlight three areas of special interest to me: the Couch Academic Center Ribbon-Cutting event, the first year of our program to meet all demonstrated need for Webb students, and the importance of maintaining momentum as we emerge from our wonderfully successful *Campaign for Webb*.

In my introductory remarks for the 2018 Annual Report, I noted that we had recently signed a construction contract for the Couch Academic Center (CAC) and begun excavation. My how time flies! As I write this article, we are preparing to take occupancy of the CAC after a fifteen-month construction program. As those who attended the Ribbon-Cutting event will attest to, our new academic center is stunning. The English bond brick walls that meticulously match those of Stevenson Taylor Hall, the state-of-the-art lecture halls, Couch Innovation Lab & Makerspace, and the panoramic views of Long Island Sound—this new building has exceeded all of our expectations. We have been delighted with the excellent work of our architect Bentel & Bentel and prime contractor DHI Construction Services Inc., and are pleased to announce that both firms have been retained to assist in the conversion of the Stevenson Taylor Hall classrooms to dormitory rooms.

The Ribbon-Cutting event was a resounding success with over 350 guests and 100 students gathered to celebrate this momentous occasion. Nineteen named spaces were acknowledged. Contributions for the named spaces came from a variety of sources: class gifts, gifts from alumni and friends, and memorial gifts. The day's events included the dedication of the new building, unveiling of the William H. Webb statue, a cocktail reception and dinner, musical entertainment, and a drone laser show. The weekend's festivities ran remarkably smoothly, in no small part due to the extraordinary efforts of our fifty-three student volunteers. They did it all! On Friday night, students planned, prepared, and served the special Campaign dinner held at the President's House. On Saturday, students directed traffic, managed registration, tended bar, and served dinner. The Student Jazz Band played during the reception, and during dinner, Luke Herbermann '21 joined by Jim Rodgers '22 entertained us with guitars, saxophones, harmonica, and vocals.

Another milestone was achieved in academic year 2019, as we fully implemented our program to meet the demonstrated financial need of all students. Providing room and board stipends to students who will benefit the most brings us back to William Webb's vision of a free and gratuitous education to those in need. These scholarships have significantly reduced student debt while building our applicant pool and enhancing the diversity of the student body. In tandem with a number of existing scholarships, The Gardiner Foundation grant has ensured the viability of this program through academic year 2020-21. We now seek to build the endowments required to sustain this commitment. We are off to a good start, with the establishment of the John J. McMullen Family Foundation Scholarship, the Joseph Mazurek Scholarship, and the Peggy S. Michel Memorial Scholarship. More is needed! If you would like to contribute to one of these scholarship funds or establish your own fund, please contact Anthony Zic, Webb's Director of Development.

I would like to conclude my remarks with a few reflections on the *Campaign for Webb*, which occupied much of our thoughts and efforts over the last six years. The campaign exceeded our expectations, having secured \$51.6 million in gifts and pledges, with 83% of alumni and a total of nearly 1,800 donors participating. During this time, the endowment grew by 15% to over \$67 million, while we caught up with previously deferred maintenance and constructed the Couch Academic Center. Campaign contributions to the infrastructure fund paid approximately two-thirds of the cost of these projects with the remainder of the cost financed. The Campaign totals include nearly \$12 million in promised estate gifts.

Thank you for all you have done to make the Campaign for Webb such a success! I am now in my seventh year as your President. Getting to know and work with so many alumni and friends of Webb has been a highlight of my presidency. I look forward to seeing many of you at the 20 regional meetings that will take place this winter. This is our first step in our next challenge—to build upon the momentum created by the most successful fundraising Campaign in Webb's history.

Wishing you a warm and joyful holiday season!



## BOARD OF TRUSTEES

### OFFICERS

**Chairman**  
**Bruce Rosenblatt (Hon.)**  
President  
Bruce S. Rosenblatt & Associates, LLC

**Vice Chairman**  
**Jon J. LaBerge '76**

**President**  
**R. Keith Michel '73**  
Webb Institute

**Secretary**  
**John N. Costello '89**  
Managing Counsel, Intellectual  
Property & Technology  
Laureate Education, Inc.

**Treasurer**  
**Greggory B. Mendenhall**  
G B Mendenhall PLLC

### OTHER TRUSTEES

**Christopher D. Allard '04**  
CEO  
Metal Shark Aluminum Boats

**Benjamin G. Bordelon**  
President & C.E.O.  
Bollinger Shipyards LLC

**David M. Bovet '70**  
Managing Partner  
New Harbor Consultants

**Dr. George Campbell, Jr.**  
President Emeritus  
Cooper Union

**CDR Richard C. Celotto, USN (Ret.) '73**  
Vice President, Engineering  
BMT Designers & Planners, Inc.

**Nolan B. Conway '15**  
Naval Architect  
Resolve Marine Group

**Dr. John C. Couch (Hon.)**  
Vice Chairman  
C.M. Capital Corp.

**Joseph J. Cuneo '57**

**Hampton K. Dixon '11**  
Manager, Hotel Refurbishment  
Carnival Cruise Line

**John L. R. Edgar III '87**  
Vice President  
Crowley Maritime Corp.

**Dr. Fernando Frimm**  
CEO  
Fora Technologies LLC

**Alison D. Granger P'14 (Hon.)**  
Chief Investment Officer  
Hartford Foundation for Public Giving

**John C. Hootman '01**  
NAVY LIAISON  
Deputy Director, Surface Warfare  
Division (OPNAV N96)  
Office of the Chief of Naval  
Operations

**John A. Malone '71**  
Malone Consulting Services

**Mark F. Martecchini '79**  
President  
Stolt Tankers

**Eugene R. Miller III '96**  
Vice President, Operations  
Bath Iron Works

**Ian Mutnick '96**  
Sr. Hydrodynamics Engineer  
Rolls-Royce Defense

**Dr. Stephen M. Payne (Ret.)**  
Vice President/Chief Naval Architect  
Carnival Corporate Shipbuilding  
Southampton

**Joseph H. Pyne (Ret.)**  
Executive Chairman  
Kirby Corporation

**Wombi Rose '09**  
President  
lovepop, Inc.

**Philip J. Shapiro**  
President and CEO  
Liberty Maritime Corporation

**VADM Paul E. Sullivan, USN (Ret.)**  
Director, Applied Research Laboratory  
The Pennsylvania State University

**Dr. Luther Tai**  
Chairman, CEO  
Roberts Bay Marina, LLC

**Peter K. Wallace '93**  
Marine Project Manager  
SeaOne Caribbean

**Dr. Jennifer K. Waters '91, P'20**  
Associate Dean for Academic Affairs  
United States Naval Academy

**Christopher Wiernicki**  
Chairman, President & CEO  
American Bureau of Shipping

### EX-OFFICIO TRUSTEES

**Jackson W. Juska '21**  
Student Representative  
Webb Institute

**Dr. Richard A. Royce**  
James J. Henry Professor of Naval  
Architecture and Director of Research  
Webb Institute

**Matthew R. Werner '95, PG'97**  
ABS Chair of Naval Architecture  
& Marine Engineering  
Dean, Webb Institute

### CHAIRMAN EMERITUS

**Dr. Charles G. Visconti '55**  
Chairman & President  
International Cargo Gear Bureau, Inc.

### TRUSTEE EMERITUS

**Patrick J. Gilmartin, Esq. (Hon.)**  
Gilmartin, Poster & Shafto

**Robert D. Goldbach '58**

**William O. Gray (Hon.)**  
President  
Gray Maritime Company

**David H. Klings (Hon.) (Ret.)**  
President, Marine Construction Div.  
Bethlehem Steel Corp.

**John W. Russell '67**  
President  
Russell Development Co., Inc.

**Dr. Peter Van Dyke '60 (Ret.)**  
Managing Director  
T. Rowe Price

### HONORARY TRUSTEES

**Dr. Charles R. Cushing**  
President  
C.R. Cushing & Co., Inc.

**Charles Kurz II (Hon.)**  
President Emeritus  
Keystone Shipping Co.

**Dr. Richard T. Soper (Hon.) (Ret.)**  
President & Chairman  
American Bureau of Shipping

## FACULTY & ADMINISTRATION

### FULL-TIME FACULTY

Dean & ABS Chair of Naval Architecture  
& Marine Engineering  
**Matthew R. Werner '95, PG '97, B.S., M.S.,  
M.B.A., P.E.**

Assistant Professor of Structural  
Engineering  
**John C. Daidola, B.S.E, M.S.E., Ph.D., P.E.**

Shirley N. & Stephen R. Towne Professor  
of Ship Design  
**Neil J. Gallagher '78, B.S., M.S., P.E.**

Assistant Professor of Naval Architecture  
**Bradley D. M. Golden '99, B.S., M.S., P.E**

Professor of Mathematics  
**Elena V. Golubeva, B.S., M.S., Ph.D.**

Assistant Dean, John J. McMullen  
Professor of Humanities & Director of  
Humanities  
**Richard C. Harris, B.A., M.A., Ph.D.**

Assistant Professor of Electrical  
Engineering  
**Michael T. Martin, B.S., M.S., P.E., P.M.P.,  
C.E.M.**

Associate Professor of Naval Architecture  
**Adrian S. Onas, B.Sc., M.Sc., Ph.D.**

James J. Henry Professor of Naval  
Architecture & Director of Research  
**Richard A. Royce, B.S.I.M., B.S.E., M.S.,  
M.S.E., Ph.D., P.E.**

Assistant Professor of Marine Engineering  
**Benjamin H. Scott, B.S., M.S.**

Mandell & Lester Rosenblatt Professor of  
Marine Engineering  
**Edwin G. Wiggins, B.S., M.S., Ph.D.**

### FACULTY EMERITI

Professor Emeritus of Engineering  
**Thomas H. Bond, B.S., B.E.E., M.E.E., P.E.**

Dean Emeritus, Professor of Naval  
Architecture  
**Roger H. Compton, B.S., M.S., D.Eng.**

Professor Emeritus of Electrical  
Engineering  
**John F. Hennings, B.S., M.S.**

Professor Emeritus of Naval Architecture  
**Richard P. Neilson, B.S., M.S.**

Professor Emeritus of Marine Engineering  
**Alan L. Rowen, B.E., M.S., P.E.**

Professor Emeritus of Mathematics  
**Bruce Stephan, B.S., M.S., Ph.D.**

Professor Emeritus of Engineering  
**Lawrence W. Ward, B.S., M.S., D.Sc.**

### ADMINISTRATION

Director of Media Relations &  
Communications  
**Kerri Allegrretta**

Director of Admissions & Student Affairs  
**Lauren Carballo**

Assistant Director of Development –  
Annual Fund  
**Joseph Cascio**

Director of Athletics & Electronics Lab  
Technician  
**Patrick Doherty**

Network & Systems Engineer  
**Ted Drivas**

Campaign Officer for Institutional  
Outreach  
**Alicia H. Edgar**

Director of Facilities  
**John Ferrante**

Assistant Director of Development –  
Development Services  
**Shanna Hamilton**

Assistant Director of Media Relations &  
Communications  
**Kyle Koleda**

Director of Financial Affairs  
**Rhonda Lightcap**

Assistant Director of Student Affairs and  
Residence Life  
**Michael Malinowski**

Laboratory Technician Emeritus  
**Joseph Mazurek (Hon.)**

President  
**R. Keith Michel '73**

Director of Information Technology  
**Peter P. Miller**

Director of Human Resources  
**Svetlana Miller**

Library Director  
**Patricia Prescott**

Assistant to the Director of Financial  
Affairs  
**Duane Ritter**

Psychologist/Psychotherapist  
**Dr. Michelle Stein**

Executive Assistant to the President &  
Director of Alumni Relations  
**Gailmarie Sujecki (Hon.)**

Engineering Laboratory Technician -  
Machinist  
**James Swan**

Executive Chef/Manager  
**Robert C. Weiner**

Director of Academic Services  
**Jocelyn Wilson (Hon.)**

Director of Development  
**Anthony R. Zic**





# THE BEST IS YET TO COME



**Bruce Rosenblatt (Hon.)**  
CHAIRMAN OF THE BOARD

As I complete my third year as Chairman of the Board, I acknowledge the well-oiled machine that makes Webb a greater success each year. Those thanks begin with our President, Keith Michel '73; our Dean, Matthew Werner '95, PG '97; and, our Director of Development, Anthony Zic. They, along with the administration, faculty, students, staff, fellow trustees, alumni, and friends, are the reasons that Webb continues to graduate young men and women who are prepared on day one for what lies ahead. Webb has a leadership team that is the envy of other academic institutions, and my efforts were made easier because of their effective work.

Each of the articles in this Annual Report offer a different perspective and provide abundant detail about so much that is going well. As with most things at Webb, the entire family has participated in the institution's success: alumni, parents, past parents, students, faculty, staff, trustees, and friends of Webb. It is becoming increasingly clear that the investments of each of these constituent groups are critical to Webb's future success.

Thank you...thank you...and, thank you again—these seem like the most fitting words after the conclusion of the most successful fundraising campaign in Webb's history. The article written by Campaign Chairman, Joe Cuneo '57 (page 6), tells the story of our remarkable success. While the outpouring of financial support during the six-year span of the *Campaign for Webb* was unprecedented, I truly believe that Webb's best is yet to come. As I have discussed our recent success with a number of Webb donors, I have learned that the *Campaign for Webb* has also inspired future plans for philanthropic investments in Webb.

There is much written in this report on the new Couch Academic Center, and this transformational building deserves all the press we can give it. The ribbon-cutting ceremony was one of the most spectacular days of my life. I would like to give special thanks to the Couch family and every individual who has helped make this vision a reality, including donors, builders, architects, and members of Webb's administration and faculty. This state-of-the-art facility will help us maintain our uncompromising commitment to academic excellence.

Webb's growing endowment solidifies our unwavering promise of a full-tuition scholarship for each admitted student. We now strive to "turn back the clock to 1967" as Anthony Zic writes on page 35, so that Webb may one day return to a "full scholarship school," and provide for all expenses, including room and board.

Last year, I wrote about Webb's Strategic Plan, led by Planning Committee Chairman, David Bovet '70. Through David's leadership, and the hard work of the Board, administration, faculty, and students, this planning effort has concluded and will guide Webb in the following areas: academic program, faculty and staff, community, student recruitment, recognition, infrastructure, and resources. During the upcoming months, Webb's administration will devise an Implementation Plan, providing a roadmap to succeed in each of the abovementioned focus areas.

It has been my pleasure to have served as Chairman of the Board, and I look forward to serving next year, which promises to be a very exciting one.



## REFLECTING ON THE CAMPAIGN FOR WEBB

**Alison D. Granger P'14 (Hon.)**  
DEVELOPMENT COMMITTEE CHAIR



Dear Friends,

Now that the *Campaign for Webb* has ended, we have the opportunity to celebrate its extraordinary success and plan for the future. The determined leadership of *Campaign for Webb* Chair Joe Cuneo '57 was a key ingredient in its success, and the Development Committee greatly appreciates his tireless efforts. The generosity of all of Webb's donors, led by our Keystone and Cornerstone donors, is fully evident in the positive impact on the endowment, the renovations to Stevenson Taylor Hall, and the magnificence of the new Couch Academic Center. Thank you.

I would like to once again this year extend my personal thanks to my colleagues on Webb's Development Committee for their thoughtful perspective and stewardship. The Committee is grateful to Webb Alumni Fund Chair Jake Neuman '93, Webb Planned Giving Chair John Malone '71, Webb Parent Annual Fund Co-Chairs Jen '91 and Tom '89 Waters P'20, and Webb Parent of Alumni Fund Chair Hal Granger P'14, for their continued leadership of Webb's volunteer fundraising committees. We all appreciate the efforts of each of the class agents, parents, alumni, and friends of Webb, who have dedicated their time and energy to personally contact Webb's donors and prospects.

Our volunteers continue to be ably and enthusiastically supported by Webb's Development Office staff. Led by Anthony Zic, Joe Cascio, Shanna Hamilton, Gailmarie Sujecki (Hon.), and Alicia Edgar have worked together, and with their Webb colleagues and the Development Committee, to continuously enhance and expand the fundraising reach of the institution.

As you will read in the pages that follow, fundraising results in the final year of the *Campaign for Webb* were impressive. Total contributions exceeded \$5.4 million last year. Webb's alumni once again set a new record for the Webb Alumni Fund, donating over \$2.5 million with

72% of alumni participating, which should again rank as the top alumni participation rate in the nation. Similarly, parents of Webb's current students as well as parents of alumni gave generously with high levels of participation, while membership in Webb's Heritage Society continued to grow.

As we look to the future, we recognize that each of us has personal reasons for giving of our time, talent, and/or resources to Webb. While my husband Hal and I continue to support Webb out of gratitude for the excellent education our son Sam received, I was reminded in May of precisely why, in addition to our special connection through our son, I feel so dedicated to Webb. The occasion was the fifth annual Heritage Society Dinner held in May at the President's House. Keith Michel wrote about it in the *Webbies Can Do Anything!* article in the Summer 2019 of the *Webb News*. In memory of Webb First Lady Peggy Michel, who had planned and prepared a beautiful gourmet meal in prior years, a group of students who had worked with her on those dinners took the initiative to do the same this year. It was an extraordinary effort, especially given that the end of the academic year was fast approaching and the junior ship design presentations took place that afternoon! The organization, teamwork, and grace with which the students served to members of the Heritage Society a delicious meal cooked to perfection was extraordinary. Their families should be proud. I know that the Webb family is, as it was a demonstration of the spirit of giving fostered by William Webb. It was a very special and selfless gesture, and just one example of what makes Webb such a unique and cherished institution.

Webb is hopeful that the increased levels of giving during the *Campaign for Webb* years will set a new baseline, or will even be exceeded in the future. We appreciate your confidence and invite you to visit the campus to see for yourselves its transformation and the impressive academic work that is taking place there. Thank you for your continued support of Webb.





# A CAMPAIGN TO REMEMBER

**Joseph J. Cuneo '57**  
CHAIRMAN, CAMPAIGN FOR WEBB



In the early days of the *Campaign for Webb*, I likened the Campaign to a ship's voyage, and as the momentum built, I called it a family affair. Now that the Campaign has ended, it seems appropriate to identify it in more lasting terms. It is, and always will be, a milestone in the history of Webb Institute. As retiring Campaign Chair, my first task must be to thank each and every one of you who helped make this effort the great success that it is. Donors, volunteers, and staff all made my role a pleasure. I also consider our collective success a personal milestone.

A new academic facility which will bring together all faculty, provide new computer and innovation/makerspace laboratories, and maximize student collaboration through team rooms and other common areas, is only some of the highlights of the infrastructure improvements that represent a leap forward as significant as the creation of the Glen Cove campus seventy-plus years ago. Added to a Campaign whose scope and success was orders of magnitude greater than any in Webb's previous history, this is clearly a milestone that will endure for generations to come.

Together, we achieved what the professionals told us was impossible. Through the generosity of nearly 1,800 individuals, the *Campaign for Webb* raised over \$51.5 million with 83 percent of Webb alumni participating. Both are record numbers, adding to the many unique elements of Webb tradition. The extended Webb family—children and grandchildren of alumni, current and past parents and grandparents, and friends—made a tremendous impact on the success of this historic effort.

The *Campaign for Webb* was ultimately a six-year effort, spanning July 1, 2013, through June 30, 2019. We undertook the Campaign after defining our needs as being approximately \$80 million and undertaking a feasibility study conducted by Jerold Panas, Linzy & Partners, a world-renowned fundraising consulting firm. Following this and a secondary study conducted

internally to capture the sentiments of additional Webb stakeholders, we established a goal of \$35 million, notwithstanding concerns from our consultant that this was a rather ambitious target.

Encouraged by the early success of the silent phase of the Campaign, we launched the “public” Campaign effort with a goal of \$40 million. We announced that \$28 million would be raised to strengthen the endowment and \$12 million would be earmarked for much needed facilities improvements. Since this was a comprehensive effort, a portion of the \$28 million raised would need to support operations, which in turn reduces the draw on the endowment.

The \$51.6 million achieved is comprised of approximately \$37.1 million in current gifts and \$14.5 million in outstanding pledges. Current gifts designated for infrastructure closely match the intended \$12 million, with the balance of current gifts used to support operations and grow our endowment.

As I look to the future, I am reminded of the story of the optimist, the pessimist, and the engineer considering a glass filled to mid-level with water. The optimist sees the glass as half full, while the pessimist sees it as half empty. The engineer sees it as simply the wrong size glass. We began this Campaign knowing we could not achieve everything we would like to achieve, but we achieved far more than we originally expected. We have made great progress and materially added to the richness of the Webb story. Webb has a culture of solving difficult problems and exceeding expectations. We have done so for 130 years, and I am confident we will continue to do so in the years ahead.

On a personal note, I would again like to extend my thanks to all members of the Webb family as you have made this journey a pleasure as well as a privilege to serve as Campaign Chairman.

# THE CAMPAIGN FOR WEBB: AMERICA'S MOST UNIQUE COLLEGE

Webb family contributed a total of \$51.6 million in gifts and pledges to the *Campaign for Webb*—simply remarkable!

We pause to celebrate exceeding the most ambitious fundraising goal in Webb's history.

Our success would not be possible without Webb's Keystone and Cornerstone Donors; this elite group of Webb family members have made commitments of \$2,500,000 or more:

## KEYSTONE DONORS



### The Couch Family

**Dr. John C. Couch (Honorary alumnus)** was a member of the Campaign Cabinet. John sees the *Campaign for Webb* as "crucial to allowing Webb to prepare students to understand, utilize and benefit from continuing advances in technology." John's nephew, **Jon Couch**, had a love for boats and boating. He was a successful businessman, a skilled carpenter, aviator, and professional motorcycle racer, as well as an avid yachtsman. As a result of his family's maritime legacy, Jon left a generous gift for Webb in his estate. Webb's new academic center was named in honor of the Couch family, in recognition of their extraordinary generosity.



### Arthur and Marilyn Burr '54

*The Burrs were honorary members of the Campaign for Webb Cabinet.*

"...There were many other instances when I was fortunate enough to be in the right place at the right time, but nothing compared to the good fortune of being able to get a great, and free, engineering education at Webb, all thanks to the generosity of William H. Webb."



### Harold "Gerry" F. (deceased) and Marguerite Lenfest

*Gerry Lenfest was an honorary member of the Campaign Cabinet.*

"Alumni and friends of Webb should consider the Campaign a call to arms—to enhance the endowment and provide the funds needed to assure future students an education without the burden of tuition."

## CORNERSTONE DONORS



### Joseph J. Cuneo '57

*Joe was Chairman of the Campaign for Webb and led the Campaign Cabinet.*

"I truly believe that making an investment in Webb is making an investment in the best, simply put—the best education, the most promising students, and the opportunity to make the greatest industry impact."



### Dr. Peter Van Dyke '60

*Peter is a Trustee Emeritus at Webb Institute.*

"Webb taught me engineering skills of approximation and estimation that carried over into other endeavors where I found them extremely useful."



### Alfred M. (deceased) and Joyce (deceased) Zeien '52

*Alfred is a William Selkirk Owen Award recipient.*

Alfred & Joyce Zeien's generosity to Webb is best exemplified by the establishment of the Alfred M. Zeien Lecture Series, the Dr. and Mrs. Alfred M. Zeien Student Scholar Endowment, and the *Campaign for Webb* Cornerstone gift to establish the Alfred '52 & Joyce Zeien Academic Wing. Alfred's career culminated in his role as Chairman and Chief Executive Officer of Gillette (1991-1999). The Zeiens are survived by their three children (Scott, Grey, and Claudia) and five grandchildren.



## CAMPAIGN TOTALS BY GIVING CATEGORY

Giving Society	# of Campaign Donors	Total \$ Committed (in millions)	% of Campaign Total
Keystone: \$5,000,000+	3	\$ 18.50	35.8%
Cornerstone: \$2,500,000 to \$4,999,999	3	\$ 9.11	17.6%
Leadership: \$1,000,000 to \$2,499,999	4	\$ 4.43	8.6%
General Admiral: \$500,000 to \$999,999	5	\$ 2.72	5.3%
Ocean Monarch: \$250,000 to \$499,999	9	\$ 2.92	5.7%
Bristol: \$100,000 to \$249,999	37	\$ 4.94	9.6%
China: \$25,000 to \$99,999	87	\$ 4.01	7.8%
Dunderberg: \$10,000 to \$24,999	157	\$ 2.24	4.3%
< \$10,000	1450	\$ 2.74	5.3%
	1755	\$ 51.61	100%

## TOP 10 CLASSES BY GIVING DURING THE CAMPAIGN FOR WEBB

Class Rank	Class	Campaign Total by Class (in millions)
1	1954	\$ 5.4
2	1957	\$ 4.4
3	1952	\$ 2.8
4	1960	\$ 2.6
5	1971	\$ 1.5
6	1958	\$ 1.2
7	1967	\$ 0.9
8	1964	\$ 0.8
9	1951	\$ 0.7
10	1970	\$ 0.7

### The Lenfest Challenge

**14** Naming Opportunities  
**\$1.7** million in new Campaign Gifts  
**7** Classes Named Spaces

### Heritage Society & the Campaign for Webb

**\$18.3** million in gifts and estate pledges  
**95** New Heritage Society members

# THE CAMPAIGN FOR WEBB: DONORS



Ruby Lounge was made possible by the Schorsch family and friends



President Michel and son, Joshua, and daughter-in-law, Beth, gather at the Peggy Memorial Garden

Thank you for your support of the *Campaign for Webb*. The names below are exactly as they will appear on the permanent display of the Couch Academic Center. If you have any questions, please call Anthony Zic at 516-759-2040.

## KEYSTONE

\$5,000,000+

The Couch Family  
Arthur and Marilyn Burr '54  
Harold "Gerry" F. and  
Marguerite Lenfest

## CORNERSTONE

\$2,500,000 to \$4,999,999

Joseph J. Cuneo '57  
Peter Van Dyke '60  
Alfred M. and Joyce Zeien '52

## LEADERSHIP/ YOUNG AMERICA

\$1,000,000 to \$2,499,999

Boysie Bollinger (Hon.)  
Richard A. Goldbach '58  
McMullen Family Foundation  
Philip J. Sims '71

## GENERAL ADMIRAL

\$500,000 to \$999,999

Kenneth L. Heitner '64  
Herman D. Pollock Family  
Foundation  
Joseph Mazurek (Hon.)  
John W. Russell '67  
The TK Foundation/OCCF

## OCEAN MONARCH

\$250,000 to \$499,999

American Bureau of Shipping  
Philip R. Faurot '51  
George A. Gilmore '57  
Robert G. Mende '51

R. Keith and Peggy Michel '73  
John W. Newcomb '66  
John F. O'Dea '68  
The G. Unger Vetlesen Foundation  
The Robert David Lion Gardiner  
Foundation, Inc.

## BRISTOL

\$100,000 to \$249,999

William B. Bartling '13  
David M. Bovet '70  
Joseph L. Brennan '79  
Joseph A. Burns '62  
Drs. George and Mary Campbell  
R. Perry Connell '97  
The Dixon Family  
S. Allen Face III '70  
Kenneth W. Fisher '64  
Thomas W. Gillette '52  
Alison and  
Hal Granger, P'14 (Hon.)  
Jacques B. Hadler (Hon.)  
James J. Henry '35  
Robert K. Kistler '46  
Jon J. '76 and Deborah W. LaBerge  
Eric and Pat Linsner '70  
John A. Malone '71 and  
Amy Malone  
Thomas N. Manuel '54  
Mark F. Martecchini '79, P'09  
Wayne D. Martin '67  
Gregory '89 and Rosanne Matzat  
Richard P. Neilson '70  
Ronald C. Olander '55  
Richard Pomfret '62  
Bruce S. Rosenblatt (Hon.)  
Joseph A. Signorelli '54  
MJS Foundation  
Paul G. Snyder '69  
John A. Springer III '82  
Luther Tai  
Reuben W. Taylor, Jr. '55  
The Arthur Vining Davis  
Foundations  
William duBarry Thomas '51  
Anthony A. Urbanelli '75  
Peter F. Weber '74  
Thomas A. Wheaton '77

## CHINA

\$25,000 to \$99,999

Benjamin B. Ackers '97  
Paulo A. Almeida '95  
Paul and Julie Backas, P'16  
Victor W. Bethge '53, GP'05  
G. William Birkhead '63  
Gary Bornstein  
Stephen R. Breit '79  
Judson B. Broome '91  
Peter C. Bryn '06  
Thomas and Susan Burns, P'08  
Steven G. Buttner '70  
Donald L. Caldera '57  
Richard C. Celotto '73  
Paul D. Chapman '67  
Charles N. Corrado '83  
Crowley Maritime Corporation  
Jerry W. Cuthbert '56  
Alexander Delli Paoli '50  
Philip S. Douthit '72  
Edward C. DuMont  
Stephen C. Dvorak '50  
John L.R. Edgar III '87 and  
Alicia H. Edgar  
Brian P. R. Eisenhower '06  
Courtney C. Ewing '05  
Fred H. Forrest  
Gabelli Foundation/  
Jewish Communal Fund  
Jacob M. Genauer '10  
Arthur L. and Vida F. Goldstein  
James N. Greenlees '72  
William B. Hale '78  
Raymond S. Hall, Jr. '58  
James Harvie '55  
Theresa Haven '92  
Paul W. Hayes '54  
Robert J. Healy '83  
Manuel G. Hontoria '88  
William E. Jenkins  
Peter A. Johnson '56  
Stephen R. Judson '74  
Ronald K. Kiss '63 and  
June Kiss '63S  
Richard and Jennifer '91 Kollmer  
Thomas E. Koster '67

Carl E. Kreidler 1920  
Stefan Kuczera '15 and  
Erin McElroy '15  
Charles Kurz II (Hon.)  
Horton W. Lain '55  
Maurice J. Laurier '50  
Timothy S. Leach '91  
Harrison T. Loeser '43  
Jane Loeser  
David and Rebecca Louie, P'17  
Endel Mann '60  
Matson Navigation Company  
Justin H. '55 and  
Sarah McCarthy '55S  
Greggory B. Mendenhall  
Paul B. Mentz '64  
Eugene R. Miller, Jr. '64, P'96  
Eugene R. Miller III '96  
Brent J. Morrison '11  
Jake M. Neuman '93  
Wing and Sufinsa Ng, P'19  
Steven Pagan '88  
Jennifer B. Panosky '85  
John R. Paul '69  
David Pedrick '70  
Russell C. Pollock '08  
Joseph H. Pyne  
Joseph A. Schetz '58  
Daniel '58 and  
Ellen Schorsch '58S, GP'19  
Eugene Schorsch '52  
Alfred H. Schwendtner '54  
Peter A. Silvia '62  
John J. Slager '49  
Richard A. Smith '03  
The Society of Naval Architects &  
Marine Engineers  
David G. St. Amand '77  
David and Christine Stone, P'06  
Steve M. Stone '06  
VADM Paul E. Sullivan  
Matthew P. '91 and  
Catherine A. '94 Tedesco  
Joseph '43 and Gertrude Thornton  
Richard W. Thorpe '55  
Michael W. Toner  
Robert Turoff, P'15  
John D. Van Buskirk '76  
Homer N. Wallin, Jr., PG'62





(l to r) Fernando Frimm, Mark '79 and Laurie Martecchini, Jon J. '76 and Deborah LaBerge, and Jen '91 and Tom '89, P'20 Waters on LaBerge Terrace



Members of the class of '73 gather in the Class of 1973 Conference Room

Thomas J. '89 and  
Jennifer K. '91 Waters, P'20  
W. Brett Wilson '75  
Charles and Jean Zeien '50

## DUNDERBERG

\$10,000 to \$24,999

Christopher D. Allard '04  
Ronald J. Altmann '63  
Jonathan R. Amy '70  
Catherine M. Anderson '93  
Barbara L. Aster  
Jack '21 and Kevin '22 Becker  
David B. Benson '56  
George J. Berger '66  
F. Roland Bjorklund '66  
Robert H. Bolling '97  
Andrew S. Bond '98  
Thomas H. Bond '45  
Corey L. Bruno '02  
Michael E. Cariello '10  
Jay P. Carson '73  
Lincoln D. Cathers '56 and  
Nancy Cathers '56S  
David S. Chapman '72  
Allan S. Childers '12  
Lou Codega, '78, P'14  
Roger H. Compton '61, PG'64  
John N. Costello, Jr. '89  
Donald C. Deckerbach II '63  
Chris and Gila Decker '95  
Michael and  
Kristine DeNapoli, P'20  
Thomas E. Dickenson '92  
Lowell and Christine Dickerson '10  
Victoria Dlugokecki '88  
Alana Duerr '08  
Phillip S. Duerr '09  
Timothy and Jeannine Dugan, P'17  
James R. Dwyer '72  
Richard and Marylou Ferrieri, P'11  
Paul and Carolyn Fleming, P'12

Peter B. Fontneau '68  
Matthew R. Fox '04  
Douglas H. Frauenberger '02  
Frederic R. Coudert Foundation  
Geoffrey D. Fuller '72  
Peter A. Gale '59  
Neil J. Gallagher '78  
Drew and Cindy Gavel, P'16  
Mark and Kym Gaylo, P'19  
Richard A. Gilmore '77  
Robert D. Goldbach '58  
Fred Gordon '78  
Richard S. Graham '83  
Samuel Granger '14  
Bryan and Lisa Green, P'18  
George P. and Jane Gross, GP'10  
Christoph A. Grueneis '92  
Steven and  
Marian Guglielmoni, P'12  
David W. Gustavson '78  
Ryan E. '04 and  
Evelyn R. '05 Hackel  
Margaret Harris  
Richard C. Harris  
Mark R. Henry '62  
Christopher and Maria Herrel  
Christopher A. Hicks '99  
Sean and Heather Hill, P'20  
D. Michael Hutchings '95  
Robert K. Jenner '70  
Ralph E. Johnson '68  
Roy E. Johnson '62  
Stephen R. and Linda S. Jones, P'19  
Richard S. Kim '11  
John R. Knobel '73  
Stephen D. Koopman '91  
Cody C. Kurtz '08  
Stuart R. Greene '95 and  
Heidi C. Landen-Greene '96  
David S. Lawson, Jr. '55  
Gabriel F. Lefebvre, Jr. '52  
J. Paul Lemoine '91  
Robert and Robin Licato, P'15  
Marc T. Limeri '77

Christopher T. Loeser '70  
Douglas J. Loeser '73  
Richard and  
Gloria Loncharich, P'19  
Daniel A. Malarkey '06  
William J. Markuske '10 and  
Jenna M. Ferrieri '11  
Nikolas P. Martecchini '09  
Craig B. Martin '99  
Thomas P. Mastronarde '69  
Joel S. McMinn '75, P'09  
Anthony and  
Lauren Migliozi, P'20  
Jack and Corrine Mills, P'16  
Stephen T. '08 and  
Kathleen Cain '07 Minnich  
George and Tatiana  
Mouravieff, P'09, P'11, P'16  
Richard A. Mulford '61  
Schuyler J. Needham '12 and  
Lidia Mouravieff Needham '11  
Paul and Linda Neureuter, P'14  
Liam C. O'Connell '98  
Jay E. and Phyllis Paris '64  
Philip M. Poullada '78  
David C. Purdy '50  
Mark Purdy  
George and Christine Reiss, P'18  
Scott (Scrich) Richards '77  
Gabrielle Rini '87  
Benjamin E. Rising '93  
Robin S. Rose '09  
Mike and Deb Roske, P'19  
Harley and Sara Rotbart  
James W. Royle, Jr. '66  
Eric Runnerstrom '69  
David J. Sawyer '08 and  
Rachel A. Sawyer '09  
Dean M. Schleicher '88 and  
Christine Schleicher '89  
Alexander L. Scott '10  
Janet and Philip Shapiro  
Lewis R. Sheldon III '73  
Steven and Melissa Shepstone '77

Elizabeth M. Singleton '07  
John Sirutis '67  
Ted A. Slotwinski '73  
Bret S. Smart Jr. '09  
J. William Smith '63  
Richard A. Smith '76  
Douglas L. Snediker '98, PG'99  
Kelly T. Sonerholm '06  
John S. Spencer '69  
Winston B. Sutter '53  
Thomas S. Taylor '53  
Charles and  
Lesley Teitelbaum, P'22  
Philip Thiel '43  
Theodore L. Thorsen '61  
Thomas P. Tindale '10  
Christopher N. Tupper '75  
Matthew D. Turns '00  
Justin C. Van Emmerik '13  
Paul G. Vibrans '71  
Edward V. Vienckowski '78  
Vigor Industrial, LLC  
Charles G. Visconti '55  
Bob vom Saal '67  
Charles B. Walburn '70  
William and  
Laurie Schorsch Webber  
Michael J. Whalen '79  
Stephen D. White '99 and  
Elizabeth E. White '99  
Sarah E. Wickenheiser '08  
Vincent S. Wickenheiser '08  
Simmy D. Willemann '10  
John P. Wise '09 and Shan Wu  
Stefan T. Wolczko '09  
Meldon J. Wolfgang IV '93  
Steven F. Wolgamot '69  
Marc Yland, P'15  
Peter B. Zahn '80, P'05  
Douglas C. Zangre '13 and  
Samantha J. Griswold '14  
Peter F. Zink '72  
Anonymous (5)





## COUCH ACADEMIC CENTER RIBBON-CUTTING



On Saturday, October 26, the Webb community celebrated the official Ribbon-Cutting for the Couch Academic Center.

The Couch Academic Center (CAC) is a state-of-the-art academic facility housing all academic functions and maximizing student and faculty collaboration. “Hidden” under a green roof and overlooking the Long Island Sound, the academic center features collaborative student project and innovation spaces, integrated student design studios and classrooms, team rooms, computer and innovation/makerspace labs, a research center, faculty offices, and a student lounge. The architecture firm, Bentel and Bentel of Locust Valley, came up with the creative concept of this two-story building featuring green rooftop terraces, and DHI Construction of Lake Success, led the construction effort.

“I am honored to serve as Webb’s President on this historic occasion. This new building will propel Webb into the 21st century—a major leap forward for our academic program,” declared Webb president, R. Keith Michel '73. “The new academic center will have an immediate impact on the recruitment and retention of faculty and students.”

Student Jackson Juska '21 is looking forward to, “the classrooms being right on the water. All the huge windows let the natural light in...and we can see the

Long Island Sound, ships, and boats, which will be a good reminder of what we are here for.”

The event included the dedication and ribbon-cutting of the new building, a presentation of 19 named spaces, unveiling of the statue of William H. Webb, Webb's founder, followed by a cocktail reception and dinner. Remarks were made by Webb Institute President, R. Keith Michel '73; Campaign Chairman and Board of Trustee member, Joseph Cuneo '57; and Board of Trustee member and honorary alumnus, John Couch, who spoke on behalf of the Couch Family for whom the academic center is



*John Couch (Hon.), Janet B. Couch, President Michel '73, and Bruce Rosenblatt (Hon.) with the Mayor of Glen Cove, Tim Tenke*



named. The event concluded with a 60-drone evening light show, in which the drones assembled into different nautical images.

“These amazing new facilities are incredibly important to Webb’s continued success,” said Dr. John Couch. “The overarching objective is to better prepare Webb graduates for what will certainly be a more dynamic, exciting and challenging high-tech future. This milestone confirms the commitment of Webb’s community to the Institute’s continued progress and preeminence in the fields of naval architecture and marine engineering. I am delighted to be able to honor my father, Richard B. Couch ’33, in this manner.”

The Couch Academic Center was made possible through contributions made to the *Campaign for Webb*, during which Webb secured a record-breaking \$51.6 million in gifts and pledges. The Campaign was made possible by the generosity of the Webb alumni, 83% of whom contributed; the leadership of the seven Keystone and Cornerstone donors who contributed \$5 million and \$2.5 million or more, respectively; and, nearly 1,800 donors, including parents and friends of Webb.



*Don Caldera '57 speaking about the Caldera and Cuneo Rotunda*



*Eugene Schorsch '52 and CAC Architect, Carol Bentel*



*Webb Board of Trustee member, John Couch (Hon.), cutting the ribbon with his sister-in-law, Janet B. Couch*



*Each named space is outfitted with a bronze plaque*



*Webb Board of Trustee member, John Couch (Hon.) and Janet B. Couch with the Webb Board of Trustees after the Ribbon-Cutting ceremony*





*Student volunteers helped ensure a smooth Ribbon-Cutting event*



*Couch Academic Center t-shirts*



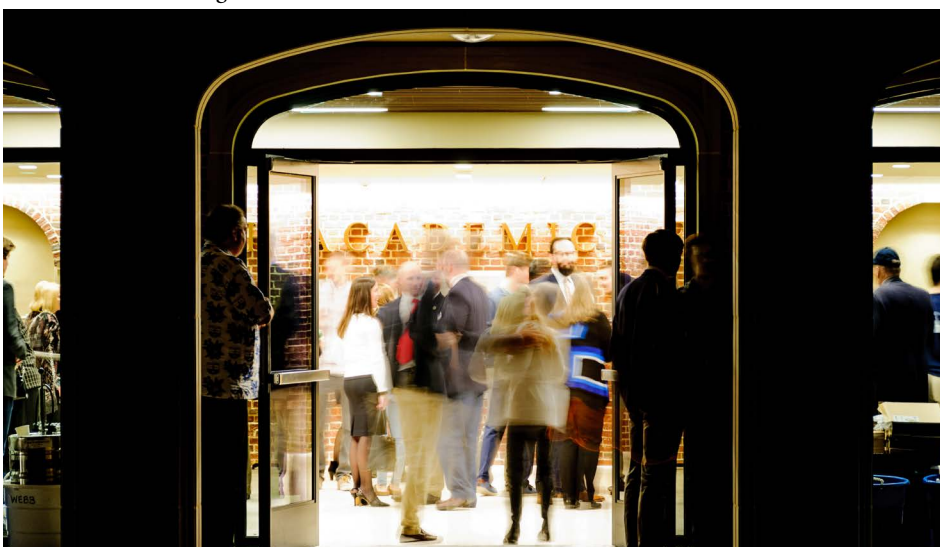
*President Michel's '73 grandniece, Lourdes*



*Lorne Sheren '73 with David Collins '73*



*The Webb Jazz band provided music during the cocktail reception*



*Guests gather in the Ruby Lounge for dessert*



*Attendees were surprised with a nautical-themed drone show*





*“When I started sculpting Mr. Webb, I was inspired by his dedication to education and that he saw this early need for it to cost nothing. The details I added are a nod to his life-long love of shipbuilding. I would hope he would be pleased, and I was honored,”*  
*Sculpture E. Spencer Schubert.*



President Keith Michel '73, Janet Couch, John Couch, Trustee Joseph Cuneo '57, and E. Spencer Schubert

### About Sculpture E. Spencer Schubert

E. Spencer Schubert has the premiere bronze sculpture studio in the Midwest. His professionalism, meticulous attention to detail and top-notch craftsmanship creates a universal demand for his work in markets like New York and Los Angeles, as well as the Midwest. For the past twenty years, Schubert has dedicated himself to mastering the human figure in bronze. His work uses the figure to explore the strengths, weaknesses, tragedies, successes, and idiosyncrasies of people. Schubert initially trained as a silversmith before becoming interested in sculpture while studying at the University of Kansas. Since 2011, he has sculpted a majority of the new inductees to the Hall of Famous Missourians. Schubert has cited the work of French sculptor Auguste Rodin as a significant influence on his style. When sculpting real persons, Schubert studies the personalities of his subjects to learn about the “undefinable things that have nothing to do with the length of his femur.”



## CLASS AGENT CORNER



by Dave Bovet '70 and Eric Linsner '70

### THE 'MOST FORTUNATE' CLASS OF '70 GIVES BACK

The Webb Class of 1970 is proud to have contributed to the *Campaign for Webb*. We hope we will inspire other classes to consider following in our footsteps.

First, why do we call ourselves the *Most Fortunate Class in Fifty Years*? We were the last class at Webb to enjoy “full” scholarships. Not only did we not pay tuition and room and board fees, but our textbooks, paper, and pencils were free as well! Each of us did have to buy a K&E slide rule—the laptop of the day, for you younger folks. Other than that, our only outlays were for chocolate chip cookies and soda to fuel the long nights at the drafting tables. Combined with earnings during the work terms and summers, most of us came out ahead after four years of college!

We are an unusual class in other ways too. Six of us were sworn into the Coast Guard (USCG) at Webb on graduation day. Eventually, half the class would serve as officers in the USCG or the U.S. Navy—this was the Vietnam era. We’re unusual, too, in that three members of our class taught at Webb and one became Dean.

*We wanted to give back.* With our 50th anniversary coming up in 2020, we were especially keen to make a gesture during the Campaign. In a late-2018 meeting, Development Director Anthony Zic and President Keith Michel '73 provided an update on our class giving during the Campaign. In short, we were only \$75,000 in new gifts away from funding a Class of '70 Luckenbach Scholarship, equivalent to one-quarter of tuition for a student annually and a modest room and board stipend.



Members of the Class of 1970 in the Class of 1970 Conference Room

We also learned that one of the conference rooms was still unclaimed in the new Couch Academic Center. We could name it, if we could collectively raise an additional \$75,000 in new gifts between February and June 2019, to be matched by the Gerry and Marguerite Lenfest Fund. Although these two efforts were ambitious, especially when combined and over such a short period of time, we decided to try to do both! We raised \$150,000 in “fresh cash” from our 17 living members in a few months. We all contributed. And we’re proud of it.

So, to the rest of the Webb classes out there—we hope you will be inspired to match our effort or even surpass it! Webb can put every single dollar to good use. We have all been fortunate to benefit from William H. Webb’s foresight and the many gifts of Webb professors, staff, and donors. We are most fortunate for the opportunity to give back.



The Class of '79 began post-graduation lives like many other Webb classes. Our different career directions—shipping, shipbuilding, engineering and design, finance, consulting, graduate studies—reflected our diversity of interests, as it does for most Webb graduates. In the early years after graduation, we saw a lot of each other; we then spread our wings, found our mates (one of whom was married at Webb!), and had children of our own, including one of whom became a Webbie. As time rolled on, careers, family obligations, and separate social networks took priority and the bulk of our time. This is Webb's edition of the "Circle of Life."

Fast forward to February 2019. As a Class Agent, it was my job to rally the class for a 40th reunion at Homecoming in late May. Years passed since we last staged an organized reunion; logistics are challenging when spread from Seattle to San Diego to Mississippi to Rotterdam. Could we create enough momentum to make it a "reunion to remember?" Adding to the usual interest in reuniting with buddies was the construction underway at the Couch Academic Center. What had they done to our campus and our home?

Webb threw an idea our way; new construction brings new naming opportunities. Did we want to add our stamp to Webb for future generations? We said yes—but what could we name at our giving level? A benefactor stepped in to make our goal possible.

Steve Breit '79 had a capstone event late in his career that provided the means for a signature contribution: a challenge matching grant for 50% of the naming goal. Steve's good fortune could be traced, in no small part, to the fine engineering education Webb provided, followed by a PhD at MIT and a career in innovative Boston-area companies. The class responded to the challenge, increasing their individual gifts, and the Class of '79 Coffee Bar became reality.

Steve suggested we personalize the gift by inscribing on the plaque the name given to the dorm room we used for socializing and watching weekly episodes of *Saturday Night Live* (the original version, of course). The Webb Gift Acceptance Committee shared in our sense of humor, and this off-beat name—Squatters' Gulch—will live on, reminding Webbies getting their daily caffeine fix that we need fun to balance a hard day's (and night's) work.

And the Homecoming reunion? 10 out of 18 grads attended and swapped Webb stories, including one of climbing trees covered in poison ivy, another involving a cross-country caravan for Winter Work, and reminiscing about the midnight boat rides on the Sound. We spent the day filling in gaps from when we had last seen each other. The only question we could not find the answer to: Why did it take so long to get together? *Carpe diem!*





## WEBB'S CLASSROOM 2020—

### *Enhancing a Proven Learning Concept with Space and Technology*

**Matthew R. Werner '95, PG'97**

DEAN & ABS CHAIR OF NAVAL ARCHITECTURE  
& MARINE ENGINEERING



*Looking onto the Boysie Bollinger Courtyard from the CAC arcade*

As a student, I selected my desk in Webb's Freshman Classroom in August of 1991. And to be honest, the classroom seemed a bit old then. My class of twenty-five students squeezed ourselves into tablet desks at the start of every class and fought over outlets for the PCs and the stereos we brought from home. Fast forward to 2019 and not much has changed—the condition of the existing classrooms is impossible to ignore.

To be fair, since Webb's move to Glen Cove in 1947, there have been modifications made as time and technology changed, including succeeding generations of projectors and screens, the integration of computers as teaching tools, increased electrical outlets, and wireless access points. Somewhere along the way, the old wooden drafting tables were replaced with laminated drafting tables (though one might argue this was not an improvement), and tablet chairs took the place of the small wooden classroom desks. The old student-made bookshelves are still in use and are highly coveted by the students.

Over this same period, the freshman class sizes have grown from the high teens and low twenties in the late 1940s and early 1950s, to 28 over the last few years. This evolution has led to significant crowding with limited space in the front of the classroom, forcing students to sit at their drafting tables two-rows-deep during lectures.

To dwell on the condition of the current classrooms would be unfair without acknowledging the genius in the Webb classroom design. Integrating design studios and classrooms dedicated to a single cohort of students is the physical manifestation of Webb's approach to undergraduate engineering education. The classrooms that were created when the Pratt's mansion was converted





*One of four new design studios in the CAC with views of the Long Island Sound*

into Stevenson Taylor Hall fostered a student-centered, collaborative learning model that has defined Webb's program for generations. The Webb classrooms allow learning to be a 24-hour endeavor through a combination of structured classes and lab time, self-guided learning, and peer-to-peer learning. The classroom serves as an immersive environment where students can share questions, knowledge, experiences, opinions, and humor. No one learns in isolation at Webb, and that is part of what makes Webb work.

With the completion of the Couch Academic Center scheduled for this fall, anticipation grows for the twenty-first-century expression of the Webb classroom. From the initial design stages, the mission was clear—eliminate the shortcomings of the existing classroom while continuing to provide an environment that supports the student-centered, collaborative learning model. Each existing classroom is being replaced by a design studio and lecture room that are adjacent and separated by large sliding

doors. This arrangement provides for a reconfigurable lecture space that flows directly into the students' design studio, allowing seamless transitioning between the spaces. The new, larger lecture spaces will allow for easier implementation of active learning strategies and group-based learning activities where the faculty members can engage the students beyond the front of the classroom. The ability to close the sliding doors and separate the lecture space from the design studio provides flexibility in scheduling elective courses and other activities, while offering additional collaborative work and quiet study space.

Each of the lecture space/design studio combinations will be equipped with the infrastructure and technology commensurate with a modern undergraduate engineering facility. We feel that these new classrooms will enhance the learning experience of our students and the teaching experience of the faculty. We believe these spaces make a clear statement of Webb's commitment to excellence in undergraduate naval architecture and marine engineering education and will be helpful in the recruitment of future generations of students and faculty members. I personally cannot wait to teach my first class in the Spring 2020 semester.



*Entrance to two of the classrooms in the Couch Academic Center*



*Dean Werner conducting tours during this year's Homecoming*



**Jake M. Neuman '93**  
CHAIRMAN OF THE WEBB ALUMNI FUND

## THANKS TO YOUR GENEROSITY, THE 2018-19 WEBB ALUMNI FUND BREAKS YET ANOTHER GIVING RECORD!

Our Webb Alumni Fund (WAF) was another great success this past year! Your generous and record-breaking contributions provided Webb \$2,561,658, surpassing our goal by 14% and last year's total by 4.5%. Webb still boasts the nation's leading alumni participation rate with 72% of alumni providing support. Thank you!

Many of our alumni embraced the call for action during the *Campaign for Webb* by increasing their giving, which formed the foundation for the success of this historic Campaign. Our challenge will be to maintain and grow this level of giving for future WAF years.

You can have a big impact on the future of our fundraising success and Webb's financial well-being by:

**Maximizing your current giving levels** – The WAF average gift is \$3,190 and the median gift is \$720. Perhaps these are goals you can strive for or comfortably exceed, depending on your circumstances.

**Giving as early in the giving years as possible** – this allows everyone involved in this effort to spend more time cultivating alumni that either don't give regularly or have not yet given at all.

**Serving as an ambassador for the WAF and Webb** – Help your fellow Class Agents by encouraging classmates to maximize their giving and to give as early in the giving year as possible. Sharing your giving strategies (monthly giving, gifts of stock, gifts leveraging donor advised funds, charitable distributions from your IRA, etc.) may inspire a new gift or new giving levels from your peers!

I can't thank the Class Agents, Group Leaders, and the Development Office enough for the work they do and for the generous gifts they contribute. The success of the WAF truly is a team effort! Thank you!

**Table 1. WAF 2-year comparison**

	2018-2019	2017-2018	Change
Total Funds Raised	\$2,561,658	\$2,455,297	4.3%
Participation % (Webb Graduates Only)	71.5%	72.1%	(0.6)%
Participation % (All Members of the Webb Alumni Association)	69.4	70.3%	(0.9)%



# QUICK FACTS

## 16 Classes

*Achieved 100% Participation!*

1946	1969
1948	1970
1949	1972
1952	2006
1953	2008
1954	2009
1959	2010
1960	2011

**\$3,190**  
Average Gift

**\$720**  
Median Gift

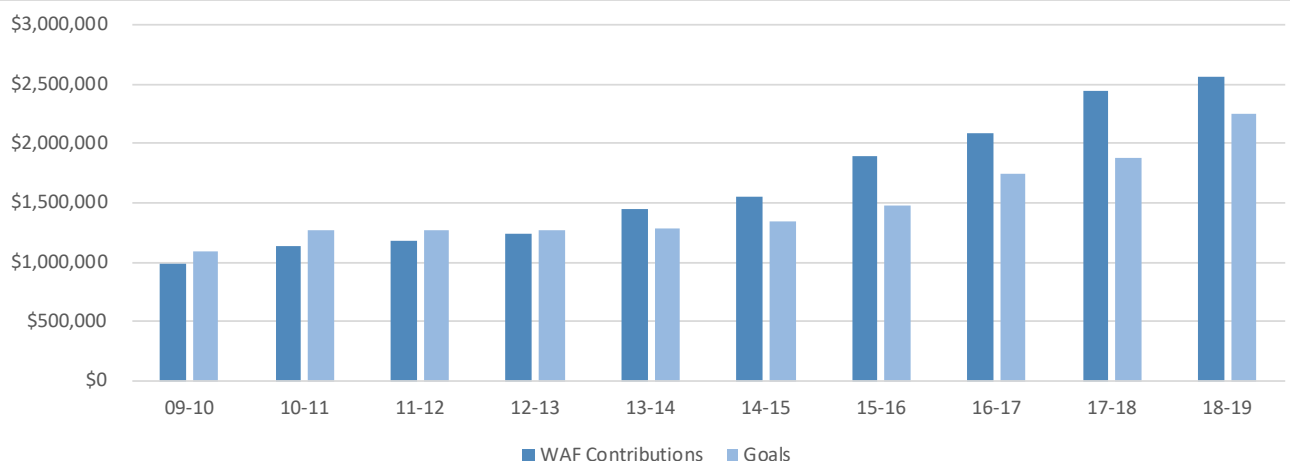
**4.5%** *Increase* from last year's WAF



Classes within 1 Donor of  
**100%**  
Participation

<b>1945</b>	<b>1963</b>
<b>1955</b>	<b>1967</b>
<b>1958</b>	<b>1993</b>
<b>1962</b>	

## WAF CONTRIBUTIONS VS. GOALS





## ALUMNI ASSOCIATION EXECUTIVE COMMITTEE

**President:** Ian Mutnick '96

**Vice President:**  
Victoria Dlugokecki '88

**Treasurer:** Ted Dickenson '92

**Secretary:** Leah R. Sosa '08

**Fifth Member:** Satchel Douglas '15

**Sixth Member:** Stefan Wolczko '09

**Alumni Fund Chairman:**  
Jake M. Neuman '93

**Planned Giving Chairman:**  
John A. Malone '71

**Historian:**  
Matthew R. Werner '95, PG'97

**Past President:** Peter K. Wallace '93

**Members at Large:**  
Joseph Signorelli '54, Spencer A. Schilling '82, Sean Murphy '13

**Audit Committee:** Jonathan H. Dowsett '09, Jacob M. Genauer '10

**Nominating Committee:**  
D. Michael Hutchings '95 & Michael Abbruscato '11

## ALUMNI REGIONAL COORDINATORS

**Northern New England (Maine):**  
Russ Hoffman '74

**Greater Boston Area:** vacant

**Southern New England:** vacant

**New York:** Andrew Lum '12

**Dist. of Columbia/Northern Virginia:** vacant

**Maryland:** Jennifer Waters '91, P'20

**Southern Virginia:** vacant

**Texas:** vacant

**Northern California:**  
Spencer Schilling '82

**Pacific North West:** vacant

**Southern California:**  
John Carlson '14

**Southern Florida:**  
Dylan Froriep '16

**Europe:** Leah Sosa '08

*Interested in filling a vacant spot?  
Contact Alana Duerr '08 at  
a.e.smentek@gmail.com.*

## WEBB GROUP LEADERS

**1958-1964:**  
Roger H. Compton '61, PG'64

**1965-1971:** Eric Runnerstrom '69

**1972-1979:** Anthony A. Urbanelli '75

**1980-1988:** Jennifer B. Panosky '85

**1989-1997:** Jake M. Neuman '93

**1998-2005:** Jason Updegraph '01

**2006-2014:** Vacant

**2015-2019:** Vacant

## CLASS AGENTS

1948 Arthur W. Schmidt  
1949 John J. Slager  
1950 Vacant  
1951 George L. Phillips  
1952 Gabriel F. Lefebvre  
1953 Victor W. Bethge  
1954 Paul W. Hayes  
1955 Horton W. Lain  
1956 Peter A. Johnson  
1957 Vacant  
1958 Raymond S. Hall  
1959 Edward C. Shope  
1960 Roderick A. Barr  
1961 Roger H. Compton  
1962 Richard Pomfret  
1963 George W. Birkhead  
1964 Eugene R. Miller, Jr.  
1965 Laurence G. Krantz  
1966 Bruce D. Cox  
1967 John W. Russell  
1968 John F. O'Dea  
1969 Eric Runnerstrom  
1970 Eric W. Linsner  
1971 Paul G. Vibrans  
1972 David S. Chapman

1973 Richard C. Celotto  
1974 Peter F. Weber  
1975 Anthony A. Urbanelli  
1976 John D. Van Buskirk  
1977 Richard A. Gilmore  
1978 Neil J. Gallagher  
1979 Mark F. Martecchini  
1980 C. Kent Greenwald  
1981 Ivan N. Kirschner  
1982 Mark W. Gagnon  
1983 Robert J. Healy  
1984 Bill R. McEachen  
1985 Jennifer B. Panosky  
1986 William M. Milewski  
1987 John L. R. Edgar III  
1988 Steven Pagan  
1989 Gregory M. Matzat  
1990 Patrick J. Goss  
1991 Matthew P. Tedesco  
1992 Theresa Haven  
1993 Jake M. Neuman  
1994 Brian M. Mulligan  
1995 D. Michael Hutchings  
1996 Eugene R. Miller III  
1997 Robert H. Bolling

1998 Christopher Swanton  
1999 Bradley D.M. Golden  
2000 Andrew W. Polay  
2001 Jason P. Updegraph  
2002 Douglas H. Frauenberger  
2003 Andrew J. DeSpirito  
2004 Katherine A.C. Munkenbeck  
2005 Matthew B. Zahn  
2006 Steven M. Stone  
2007 Kathleen Cain Minnich  
2008 Leah R. Sosa  
2009 Jonathan H. Dowsett  
2010 Jacob M. Genauer  
2011 Lidia Needham  
2012 Steve Guglielmoni  
2013 Colin T. Spillane  
2014 David S. Smith  
2015 Satchel B. Douglas  
2016 Dylan M. Froriep  
2017 W. Marshall Fettig  
2018 Vincent R. Commisso  
2019 Andrew T. Pidduck  
PG'61- Vacant  
PG'68  
PG'99 Dan (Yongjun) Chen

# 2018/19 | WEBB ALUMNI FUND CLASS GIVING SUMMARY

	Alumni Donors	Class Affiliated Honorary Alumni & Spouses	Total Gifts (\$)	Average Gift (\$)	# Living Alumni	Alumni Giving %
Honorary	13	-	238,699	18,361	53	53%
PG '51-'60	4	-	2,730	683	8	50%
PG '61-'68	8	-	13,350	1,669	13	62%
PG '97-'99	1	-	500	500	4	25%
1941	-	-	-	-	1	0%
1942	-	-	-	-	1	0%
1944B	-	-	-	-	1	0%
1945	1	-	2,600	2,600	2	50%
1946	1	-	100	100	1	100%
1947	-	-	-	-	1	0%
1948	1	-	500	500	1	100%
1949	3	-	3,200	1,067	3	100%
1950	2	-	4,000	2,000	4	50%
1951	2	-	1,300	650	6	33%
1952	4	-	71,112	17,778	4	100%
1953	6	-	6,970	1,162	6	100%
1954	7	2	126,436	14,048	9	100%
1955	11	-	55,277	5,025	12	92%
1956	6	-	14,400	2,400	9	67%
1957	5	1	128,348	21,391	12	50%
1958	11	-	63,756	5,796	12	92%
1959	9	1	8,300	830	10	100%
1960	10	-	108,700	10,870	10	100%
1961	6	-	11,500	1,917	8	75%
1962	12	-	54,850	4,571	13	92%
1963	13	3	34,662	2,166	17	94%
1964	6	1	64,200	9,171	11	64%
1965	6	-	5,050	842	8	75%
1966	11	1	68,660	5,722	16	75%
1967	14	1	42,360	2,824	16	94%
1968	5	-	9,220	1,844	10	50%
1969	10	-	14,907	1,491	10	100%
1970	17	-	203,287	11,958	17	100%
1971	5	1	27,797	4,633	11	55%
1972	17	-	42,740	2,514	17	100%
1973	17	-	147,088	8,652	20	85%
1974	7	-	40,000	5,714	10	70%
1975	16	-	56,100	3,506	21	76%
1976	9	-	61,575	6,842	14	64%
1977	15	-	46,915	3,128	21	71%

	Alumni Donors	Class Affiliated Honorary Alumni & Spouses	Total Gifts (\$)	Average Gift (\$)	# Living Alumni	Alumni Giving %
1978	12	-	20,470	1,706	16	75%
1979	11	-	108,646	9,877	16	69%
1980	9	-	6,675	742	16	56%
1981	5	1	2,320	387	9	67%
1982	13	-	20,637	1,587	20	65%
1983	6	-	17,950	2,992	16	38%
1984	4	-	4,770	1,193	12	33%
1985	12	-	7,389	616	21	57%
1986	5	-	1,225	245	19	26%
1987	11	-	15,179	1,380	20	55%
1988	13	-	23,520	1,809	18	72%
1989	7	-	21,351	3,050	16	44%
1990	5	-	5,600	1,120	15	33%
1991	11	-	37,650	3,423	18	61%
1992	7	-	8,375	1,196	16	44%
1993	15	-	29,368	1,958	16	94%
1994	4	-	5,700	1,425	18	22%
1995	13	-	17,916	1,378	14	93%
1996	8	-	19,210	2,401	16	50%
1997	17	-	32,363	1,904	19	89%
1998	12	-	15,395	1,283	19	63%
1999	10	-	9,304	930	21	48%
2000	7	-	5,450	779	14	50%
2001	14	-	9,095	650	17	82%
2002	11	-	8,738	794	17	65%
2003	5	-	12,400	2,480	16	31%
2004	5	-	7,150	1,430	15	33%
2005	10	-	10,690	1,069	13	77%
2006	11	-	21,250	1,932	11	100%
2007	18	-	14,176	788	20	90%
2008	24	-	31,730	1,322	24	100%
2009	18	1	28,875	1,520	19	100%
2010	22	-	38,855	1,766	22	100%
2011	22	1	64,447	2,802	23	100%
2012	16	-	11,115	695	20	80%
2013	15	-	42,850	2,857	16	94%
2014	11	1	11,550	963	16	75%
2015	18	-	19,750	1,097	20	90%
2016	13	-	2,866	220	19	68%
2017	14	-	1,440	103	19	74%
2018	15	-	4,454	297	21	71%
2019	18	-	2,575	143	21	86%
Grand Total	788	15	2,561,658	3,190	1,157	69.40%



## 2018-2019 DONATIONS

# WILLIAM H. WEBB SOCIETY

In the pages that follow, we acknowledge all of our donors in the Webb community for their generosity and loyalty—alumni, trustees, friends, parents of alumni and students, family, faculty, staff, students, foundations, and corporations. Thank you for your continued support of Webb. Your giving has a profound impact on every student, faculty member, facility, and program.

### VISIONARY

\$100,000+

Boysie Bollinger (Hon.)  
Arthur and Marilyn Burr '54  
John C. Couch (Hon.)  
McMullen Family Foundation  
R. Keith Michel '73  
TK Foundation/OCCF  
Peter Van Dyke '60

### GUARDIAN

\$50,000 to \$99,999

American Bureau of Shipping  
Donald L. Caldera '57  
Joseph J. Cuneo '57  
S. Allen Face III '70  
Jon J. '76 and Deborah W. LaBerge  
John W. Newcomb '66  
Ellen "Ellie" G. Schorsch '58S, GP'19  
Eugene Schorsch '52  
Thomas S. Taylor '53  
The G. Unger Vetlesen Foundation

### PACESETTER

\$25,000 to \$49,999

William B. Bartling '13  
Gary Bornstein  
David M. Bovet '70  
Stephen R. Breit '79  
Joseph L. Brennan '79  
Jane Loeser  
The Dixon Family  
Thomas W. Gillette '52  
Arthur L. and Vida F. Goldstein  
Kenneth L. Heitner '64  
Harrison T. Loeser '43  
John A. Malone '71  
Richard Pomfret '62  
Joseph '43 and Gertrude Thornton  
Anthony A. Urbanelli '75  
Peter F. Weber '74  
Thomas A. Wheaton '77

### BENEFACTOR

\$10,000 to \$24,999

Jonathan R. Amy '70  
Paul and Jeanine Becker '21, P'22  
G. William Birkhead '63  
Judson B. Broome '91  
Thomas and Susan Burns, P'08  
Richard C. Celotto '73  
Paul D. Chapman '67  
R. Perry Connell '97  
Thomas B. Crowley, Jr. (Hon.)  
Frederic R. Coudert Foundation  
Philip S. Douthit '72  
Kenneth W. Fisher '64  
Gabelli Foundation/Jewish  
Communal Fund  
George A. Gilmore '57

Alison and Hal Granger, P'14 (Hon.)  
James N. Greenlees '72  
Paul W. Hayes '54  
Robert J. Healy '83  
Robert K. Jenner '70  
Robert K. Kistler '46  
Stefan Kuczera '15 and  
Erin McElroy '15  
David S. Lawson, Jr. '55  
Eric and Pat Linsner '70  
Thomas N. Manuel '54  
Mark F. Martecchini '79, P'09  
Gregory '89 and Rosanne Matzat  
Gregory B. Mendenhall  
Eugene R. Miller III '96  
Richard P. Neilson '70  
Jake M. Neuman '93  
Steven Pagan '88  
David R. Pedrick '70  
Bruce S. Rosenblatt (Hon.)  
Harley and Sara Rotbart  
John W. Russell '67  
Peter A. Silvia '62  
Richard A. Smith '03  
John A. Springer III '82  
Luther Tai  
Reuben W. Taylor, Jr. '55  
Charles and Lesley Teitelbaum, P'22  
Richard W. Thorpe '55  
Homer N. Wallin Jr., PG'62  
William and  
Laurie Schorsch Webber  
W. Brett Wilson '75  
Anonymous

### PATRON

\$5,000 to \$9,999

Benjamin B. Ackers '97  
Paulo A. Almeida '95  
Catherine M. Anderson '93  
Joseph A. Burns '62  
Steven G. Buttner '70  
Drs. George and Mary Campbell  
Michael E. Cariello '10  
Donald C. Deckebach II '63  
Chris and Gila Decker '95  
Edward C. DuMont  
James R. Dwyer '72  
John L.R. Edgar III, '87  
and Alicia H. Edgar  
Brian P. R. Eisenhower '06  
Paul and Carolyn Fleming, P'12  
Peter B. Fontneau '68  
Jacob M. Genauer '10  
Samuel Granger '14  
William B. Hale '78  
Richard C. Harris  
Sean and Heather Hill, P'20  
Peter A. Johnson '56  
Richard and Jennifer '91 Kollmer  
Cody C. Kurtz '08  
Horton W. Lain '55  
Geoffrey G. Landon '79  
Bryan Hunt Lawrence  
Gabriel F. Lefebvre, Jr. '52  
Daniel A. Malarkey '06

Endel Mann '60  
Matson Navigation Company  
Eugene R. Miller, Jr. '64, P'96  
Brent J. Morrison '11  
Wing and Sufinsa Ng, P'19  
John R. Paul '69  
Russell C. Pollock '08  
Rauch Foundation  
Wombi Rose '09  
Mike and Deb Roske, P'19  
Joseph A. Schetz '58  
Ronald Schorsch and Bernd Hilbert  
Janet and Philip Shapiro  
Lewis R. Sheldon III '73  
Lorne B. Sheren '73  
John E. Sirutis '67  
J. William Smith '63  
David G. St. Amand '77  
Stanley C. Stockdale '73  
VADM Paul E. Sullivan  
Matthew P. '91 and  
Catherine A. '94 Tedesco  
Theodore L. Thorsen '61  
Thomas P. Tindale '10  
Christopher N. Tupper '75  
Robert Turoff, P'15  
John D. Van Buskirk '76  
Thomas J. '89 and  
Jennifer K. '91 Waters, P'20  
Michael J. Whalen '79  
Peter F. Zink '72

### SPONSOR

\$2,500 to \$4,999

Ronald J. Altmann '63  
Joseph and  
Marian Armstrong, P'22  
Paul and Julie Backas, P'16  
George J. Berger '66  
Andrew S. Bond '98  
Thomas H. Bond '45  
Roger and Jill Compton '61, PG'64  
Charles N. Corrado '83  
Jerry W. Cuthbert '56  
Michael and  
Kristine DeNapoli, P'20  
Walter F. Devine '79  
Thomas E. Dickenson '92  
John and Lynn Dixon, P'20  
Alana Duerr '08  
Phillip S. Duerr '09  
Courtney C. Ewing '05  
Richard and Marylou Ferrieri, P'11  
Matthew R. Fox '04  
Geoffrey D. Fuller '72  
Peter A. Gale '59  
Richard A. Gilmore '77  
Mauricio and  
Pamela Gonzalez, P'20  
David Gossage and  
Karen Luparello, P'22  
Richard S. Graham '83  
Christoph A. Grueneis '92  
Steven and  
Marian Guglielmoni, P'12  
David W. Gustavson '78

Ryan E. '04 and Evelyn R. '05 Hackel  
Christopher and  
Maricar Harris, P'19, P'22  
James Harvie '55  
Mark R. Henry '62  
Manuel G. Hontoria '88  
D. Michael Hutchings '95  
Roy E. Johnson '62  
Stephen R. Judson '74  
Jim and Sharlene Kelly, P'19  
Richard S. Kim '11  
Matthew Kleiger, P'19  
Stephen D. Koopman '91  
Thomas E. Koster '67  
Charles Kurz II (Hon.)  
John W. Larson '53  
Timothy S. Leach '91  
Kirk and Linda Lehman, P'22  
J. Paul Lemoine '91  
Christopher T. Loeser '70  
Douglas J. Loeser '73  
Diana M. Look '09  
Walter M. Maclean  
Wayne D. Martin '67  
Thomas W. Mattson '67  
Anthony and Lauren Migliozi, P'20  
Andre and Anny Milbitz, P'20  
Stephen T. '08 and  
Kathleen Cain '07 Minnich  
Richard and Mary Murphy, P'13  
Schuyler J. Needham '12 and Lidia  
Mouravieff Needham '11  
William F. Nugent '90  
Liam C. O'Connell '98  
Jay E. and Phyllis Paris '64  
Jonathan G. Parrott '79  
Joel R. Parry '79  
David C. Purdy '50  
Latchman and Deorani Reddy, P'19  
Gabrielle Rini '87  
Benjamin E. Rising '93  
Christian Saether '75  
Robert and Erika Schmitz P'22  
Joseph A. Signorelli '54  
Elizabeth M. Singleton '07  
Ted A. Slotwinski '73  
Paul G. Snyder '69  
John R. Stebe '08  
Steve M. Stone '06  
Geoffrey Uttmark, P'23  
Edward V. Vienckowski '78  
Bob vom Saal '67  
David and Karen Wang, P'20  
Frank and Susan Weeks, P'21  
John P. Wise '09  
Meldon J. Wolfgang IV '93  
Indra and Suliani Wui, P'20  
Peter B. and Penny B. Zahn '80, P'05  
Douglas C. Zangre '13 and  
Samantha J. Griswold '14  
Anonymous

### MEMBER

\$1,000 to \$2,499

Edgar D. Alderson '49  
A. Todd Andre-Colton '74, P'05

Honorary alumnus/a (Hon.) - Spouse of deceased alumnus/a (S) - Exchange student (E) - The names of deceased donors are *italicized*.



Cameron M. Baker '07  
 Mark R. Bebar '70  
 Christopher J. Becker '08  
 David B. Benson '56  
 Carol and Paul Bentel  
 F. Roland Bjorklund '66  
 Scott D. Black '90  
 Matthew D. Blake '78  
 James A. Bock '66  
 Alan M. Bolind '98, PG'99  
 Robert H. Bolling '97  
 James B. and  
 Gwendalyn D. Benoit '01  
 Fred and Barbara Bornstein  
 Jeffrey B. Bowles '00  
 W. Porter Bratten III '08  
 Scott and Rachael Breza P'22  
 Ron and Susan Briggs  
 Corey L. Bruno '02  
 Peter C. Bryn '06  
 Stuart C. Bunnell '70  
 Jack Buono  
 Ian R. Busch '88  
 Kevin H. Calhoun '78  
 William M. Cannon '65  
 Robert B. Carelli '09  
 Jay P. Carson '73  
 William Casey  
 Gregory E. Castleman '76  
 David S. Chapman '72  
 Fred B. Chester '66  
 Allan S. Childers '12  
 Josh and Laurie Chisari P'22  
 Albert R. Chovit '51  
 Lou Codega, '78, P'14  
 Matthew D. Collette '99  
 Joe Comer  
 Nolan Conway '15  
 John N. Costello, Jr. '89  
 Joy Davis  
 DeLaCour Family Foundation  
 Agnello and Olen Dias, P'19  
 Lowell and Christine Dickerson '10  
 Paul H. Diehl '56  
 Douglas H. Dirks '66  
 Victoria Dlugocki '88  
 C. Mitch Dmohowski '88  
 Nicholas M. Dombrowski '02  
 Satchel Douglas '15  
 Robert E. Dvorak '07  
 Daniel A. Dwyer '13  
 Michael S. Eaton '06  
 John S. Eck '90  
 Richard G. Eddy '55  
 Robert and Irene Edlin '54  
 Fred P. Endrizzi '62  
 Carl D. Fast '77, P'14  
 Jenna M. Ferrieri '11  
 Edward and Lorena Flanagan, P'21  
 Douglas H. Frauenberger '02  
 Austin J. French '09  
 Raymond A. Gagliardi, II '18  
 John P. Gallagher '74  
 Neil J. Gallagher '78  
 Charles Garland '58

John L. Glaeser '68, P'03  
 Richard A. Goldbach '58  
 Fred Gordon '78  
 John A. Graap, Jr. '61  
 David J. Grant '98  
 Timothy Graul '63X  
 Bryan and Lisa Green, P'18  
 Stuart R. Greene '95  
 Gregory M. Griffin '77  
 George Gross, P'10  
 Mary A. Hafner  
 Kim Hall, P'21  
 Raymond S. Hall, Jr. '58  
 James R. Hancock '67  
 Michael and Jennifer Hartigan, P'22  
 Robert B. Hedges '53  
 Todd R. Heidenreich '89  
 Douglas S. Henn '79  
 Henry and  
 Natalie Herbermann, P'21  
 Taylor M. Herinckx '06  
 Halsey C. Herreshoff '55  
 Christopher A. Hicks '99  
 Russell H. Hoffman '74  
 John C. Hootman '01  
 Jay S. Howell, Jr. '72  
 Lucas A. Hurt '01  
 John F. Ince '66  
 Daniel P. Jacques '87  
 Caitlin E. Jarecki '05  
 Vincent J. Jarecki III, '05  
 Eric and Meredith Johannson, P'21  
 Spencer Johnson '93  
 Stephen and Linda Jones, P'19  
 Thomas and Roberta Juska, P'21  
 Albert N. Kamahi '93  
 Joseph J. Kelleher '84  
 Karl L. Kirkman '65  
 June Kiss '63S (Hon.)  
 David H. Klings (Hon.)  
 John R. Knobel '73  
 L. Randall and  
 Billy Eve Koenig, P'80  
 Damir J. Kolich '96  
 Kurt Kramer '63X  
 Clinton W. Kreitner PG'65  
 Mr. and Mrs. John C. LaBerge, P'76  
 Heidi C. Landen-Greene '96  
 Stephen J. Lardie '73  
 Cyrus J. Lawyer IV '06  
 Peter S. C. Lee '10  
 Jonathan D. Leivo '07  
 Robert and Robin Licato, P'15  
 Marc T. Limeri '77  
 William T. Lindenmuth '63  
 Robert and Lora Lindyberg, P'21  
 Bridget F.  
 Lisnyk-Washlack '63S (Hon.)  
 Anthony Loreto '08  
 Andrew Lum '12  
 Roderick MacKinnon and Jue Chen  
 Robert and Susan Maes, P'21  
 Robert and Cindi Maguire, P'21  
 Kyle R. Manis '12  
 Donald and Valerie Marburger, P'07

Henry S. Marcus '65  
 William R. McCreight '67  
 John and Simone McGuinness, P'20  
 Nathan J. McKenzie '98  
 Joshua S. McMinn '09  
 Ying Mei  
 John A. Mercier '60  
 Thad J. Michael '97  
 Joshua Michel and Beth Pysz  
 Mr. and Mrs. Rudolf Milbitz, GP'20  
 Jack and Corrine Mills, P'16  
 Jason W. Minett '06  
 James R. Moody '82  
 Joseph D. Mott, Jr. '75  
 Andrei Mouravieff '09  
 George and Tatiana  
 Mouravieff, P'09, P'11, P'16  
 Brian M. Mulligan '94  
 Katharine A. C. Munkenbeck '04  
 Ian Mutnick '96  
 Amanda M. Malarkey-Nair '10  
 Peter and Kathi Needham, P'12  
 Stephen K. Neely '85  
 Paul and Linda Neureuter, P'14  
 John D. Nonemaker II '10  
 Nadine Oakley Simms, V.M.D.  
 John F. O'Dea '68  
 John and Barbara Oetzman, GP'20  
 Ronald C. Olander '55  
 Matthew H. O'Leary '07  
 Robert and Bonny Oliver, P'22  
 Jennifer B. Panosky '85  
 Jane N. Partanen, P'87  
 Ryan A. Pfeifer '11  
 Elizabeth Pistritto, P'21  
 Craig A. Pomeroy '83  
 Philip M. Poullada '78  
 Mark D. Pudlo '87  
 Joseph H. Pyne  
 Walter D. Rabe '70  
 Irving G. Raphael '67  
 Douglas A. Read '97  
 Daniel and Beth Reifsnnyder, P'08  
 Edward A. Rerisi '96  
 Donald E. Rickerson III '13  
 David R. Rodger '63  
 Richard C. Rodi '64X  
 Karen G. Rossbach '91  
 Joshua W. Rothman '10  
 James W. Royle, Jr. '66  
 Eric Runnerstrom '69  
 Kenneth Rusinek '72  
 Kit Ryan '67  
 Dustin R. Rybovich '10  
 Tedi R. Rybovich '10  
 David J. Sawyer '08  
 Rachel A. Sawyer '09  
 Roxanne R. Schacht '13  
 Spencer A. Schilling, Jr. '82  
 Christine Schleicher '89  
 Dean M. Schleicher '88  
 Richard Schmitt '62  
 Alexander L. Scott '10  
 Benjamin Scott and Patricia  
 Shustock, P'10

Robert C. Seiwel, Jr. '69  
 Lisa Mende Senus  
 Carl R. Setterstrom '73  
 David M. Shepard '85  
 Steven C. Shepstone '77  
 Reed D. Sigfridson '73  
 Bret S. Smart Jr. '09  
 Raub W. Smith '79  
 Richard A. Smith '76  
 Douglas L. Snediker '98, PG'99  
 Joel P. Sodowsky '96, PG'97  
 Kelly T. Sonerholm '06  
 Leah R. Sosa '08  
 John S. Spencer '69  
 J. Niel Spillane '50, GP'13  
 Jeremy A. Stahlin '66  
 Luke L. Suda '80  
 Gailmarie Szejcki (Hon.)  
 Sean M. Sundey '03  
 Winston B. Sutter '53  
 Jeffrey and Andrea Taber, P'20  
 Thomas and Melanie Tack, P'20  
 Michael J. Telfer '98  
 Sam and Indu Thomas, P'19  
 Bruce Thompson and  
 Laurie Geisel, P'15  
 Bernard M. Thomson III '66  
 Scott and Sharon Tinnell, P'20  
 Michael W. Toner  
 Joseph J. Tooker '02  
 Steven W. Torok '97  
 John F. Towle  
 Michael and Theresa Tremblay, P'20  
 Elizabeth A. Tuckel '01  
 Matthew D. Turns '00  
 Matthew L. Unger '04  
 Jason P. Updegraph '01  
 Justin C. Van Emmerik '13  
 Margaret R. Verdon '63S  
 Paul G. Vibrans '71  
 Charles G. Visconti '55  
 Charles B. Walburn '70  
 Rachel Walker '14  
 J. Michael Wallace '62  
 Lawrence W. Ward PG'51  
 David Weathers and  
 Kathleen Bracken, P'19  
 William C. Webster '59  
 Matthew R. Werner '95, PG'97  
 Elizabeth E. White '99  
 Stephen D. White '99  
 James R. Whitley, Jr. '79  
 Sarah E. Wickenheiser '08  
 Vincent S. Wickenheiser '08  
 Edwin G. Wiggins (Hon.)  
 Jonathan G. Williamson '58  
 Stefan T. Wolczko '09  
 Mark K. Wolf '95  
 Steven F. Wolgamot '69  
 Amy Zahray '14  
 Thomas E. Zielinski '72  
 Robert B. Zubaly '55  
 Anonymous (4)

Honorary alumnus/a (Hon.) - Spouse of deceased alumnus/a (S) - Exchange student (E)- The names of deceased donors are *italicized*.



## 2018-2019 DONATIONS

# WEBB HONOR ROLL DONORS

### PRESIDENT'S CLUB

\$500 to \$999

Robyn J. Anders '64  
James K. Antrim '72  
Kevin D. Baetsen '77  
Roderick A. Barr '60  
Susan C. Barra, P'07  
William and Nancy Bartling, P'13  
Gary and Phyllis Becker, GP'21  
Robert and Charlene Benoit, P'01  
Michael R. Birmann '86  
Damian Bozzacco '00  
Alfred A. Bozzuffi '78  
Thomas J. Brackin '16  
Trish Bratten, P'08  
June Caligure P'22  
Thomas W. and  
Carol J. Campbell, '69, P'99  
Chad S. Caron '98  
Thomas W. Chadwick '72  
Kathryn A. Chaffee '16  
Yongjun Chen PG'99  
Richard A. Claytor PG'56  
David H. Collins '73  
Anthony T. Constable '02  
Stephane J. Cordier '82  
Bruce D. Cox '66  
Christopher C. Critchett '91, PG'97  
Emily and Eitan Danon  
Dudley A. Dawson '71  
Drs. Theresa and  
Roland De Marco, P'13  
Nicholas de Sherbinin '18  
Nicholas J. DelGatto '12  
Glenn and Cynthia Desio, P'21  
Andrew J. DeSpirito '03  
Jacqueline A. DeSpirito '02  
Edgar P. Dollin '80  
Jonathan H. Dowsett '09  
David D. Eberhardt '07  
Samuel R. Ernst '03  
Frank P. Falci, Jr. '54  
Kenneth W. Faulter '81  
J. Carey Filling, Jr. '93  
Benjamin Fisher '11  
Kimberly A. Fisher '86  
John A. Fleming '12  
Betty Rose Forssell  
R. Mark Forssell '55  
Howard Frauenberger, P'02  
John and Linda Gagliardi, P'18  
Drew and Cindy Gavel, P'16  
Mark and Kym Gaylo, P'19  
Gilbert Associates  
Patrick J. Gilmartin (Hon.)  
Bradley D. Golden '99  
Douglas C. Goldhirsch '85  
Leslie M. Gray III '68  
C. Kent Greenwald '80  
Matthew J. Groff '12  
Sandra Groff, P'12  
David M. Gross '10  
Arthur Cheliotas and  
Dr. Linda Gross-Cheliotas, P'10  
Charles L. Grover III '58  
Steven Guglielmoni '12  
Lance O. Guliani '81  
Ted and Noelle Haland, P'20  
Jonathan T. Hale '18  
Alexander Hanford '15  
Jared P. Harlan '12  
Harold Grinspoon  
Charitable Foundation

Eric Harris '14  
Peggy Harris  
John G. Harrison '70  
Theresa Haven '92  
Charles E. Hawkins IV '91  
Daniel R. Healy '87, P'21  
Brian D. Heberley '01  
Christine L. Heberley '02  
David A. Helgerson '77  
Bill Helming '73  
Scott C. Henry '97  
Matthew and  
Theresa Herinckx, P'06  
John F. Hillmann '56  
Ernest L. Holmboe '61  
Glenn Howard, Jr.  
Joseph A. Hubbard '95  
Michael J. Hughes '88  
William C. Hurt III '59  
Nicolas P. Jadamec '93  
Joshua Jespersen  
Ralph E. Johnson '68  
Eric Jordan '05  
Mr. and Mrs. Isaac Kamahi, P'93  
Paul Kamen '73  
Anthony and Susan Keady P'22  
Donald Kelley and  
Nancy Esposito-Kelley, P'21  
Kevin and Elizabeth Kepner, P'22  
Dennis and Marie Kiely P'22  
Ivan N. Kirschner '81X  
Justin R. Klag '11  
Robert J. Kleinschmit '06  
Geraldine Knatz  
Timothy A. Knowles '75  
Philip C. Koenig '80  
Russell E. Kupferer '99  
Mr. and Mrs. Thomas  
Kupferer, P'99  
Michael D. LaRose '13  
Christopher Licato '15  
David E. Little '75  
Christopher H. Lyons '10  
Duncan T. MacLane '78  
Naresh Maniar  
Daniel S. Mannheim '08  
Matthew G. Marburger '07  
James W. McCoy '57  
Gary W. McCue '75  
Garth and Jennifer  
McDonald, GP'22  
Bill R. McEachen '84  
Ian S. McMahon '11  
Barton W. McPheeters '85  
Paul B. Mentz '64  
Vito R. Milano PG '60  
Ken and Jennifer Morrison, P'11  
Sean P. Murphy '13  
Steven and Cathryn Nation  
George P. Neyman PG'66  
Francis X. Nicastro '56  
Erik Nilsson '93  
Michael and  
Catherine Nowakowski, P'10  
Dennis and Barbara O'Keefe P'22  
Henry A. Olson '63  
Thomas T. O'Shea '00  
Joseph and Randi Owen, P'15  
Mark D. Paulhus '85  
Dale E. Pederson '12  
Alexandra L. Pitti '15  
Daniel J. Platt '87  
Robert C. Ranzenbach '82  
Jeffrey D. Reifsnnyder '08  
Thomas C. Rider '82  
Benjamin Rockwell '15  
Matthew Rotbart  
David L. Rusnak '88  
Jennifer R. Ryan '99  
John and Aimee Ryan P'22  
Cullen D. Sarles '10  
Daniel and Vivian Sarles, P'10  
Arthur W. Schmidt '48  
Frederick Seibold, Jr. '61  
Luke A. Shingledecker '00  
Andrew Singer P'22  
Monique Sinmao '93  
John J. Slager '49  
Douglas L. Slocum '10  
Bret and Denise Smart, P'09  
David Smith '14  
Joel D. Snyder III PG'68  
Jonathan J. Soja '13  
Richard T. Soper (Hon.)  
Andrew T. Speirs '97  
Colin T. Spillane '13  
Jerry L. Steiner '70  
Mr. and Mrs. Michael B.  
Stusse, P'00  
John J. Sullivan IV '01  
Christopher Swanton '98  
Robert J. Talarico '12  
George and Elizaveta Temidis, P'21  
William B. Terney '60  
Andrew Thompson '15  
Lennert O. Thunberg '58  
Dr. Kirsi K. Tikka  
Tyler Totten '15  
Stephen and Joan Turns, P'00  
Daniel Turoff '15  
John Vasilakos '77  
Ryan L. Vittetoe '94  
Sean P. Walker '18  
Peter K. Wallace '93  
Samuel K. Waterhouse '13  
Webb Alumni Association  
James R. Webber  
Abbott D. Weiss '63  
Jana Wesson '95  
Emily E. Whitman '05  
Simmy D. Willemann '10  
Nathan and Deborah Wilson, P'19  
Evan Wingfield '15  
Ethan T. Wiseman '11  
Scott G. Withee '72  
Karl R. Witmer '75  
Jerrold L. Wyman '98  
Daniel W. Yannitell '62  
Wesley Yland '15  
Eugene A. Yourch '59  
Matthew B. Zahn '05  
Troy D. Zangle '13  
Jean G. and Jennifer J. Zeien  
Anthony Zic  
Richard T. Zuerner '59X  
Anonymous (3)

F. David and Ellen Cavanaugh, P'20  
Michael G.K. Cheng '12  
W. Edward Christiansen '58  
James Codega '14  
Peter R. Coe '76  
George L. Colborn '54X  
Michael D. Comens '72  
Seth D. Cooley '10  
Joseph N. Corvelli '93  
Roland D. De Marco '13  
Greg Diggs '91  
Jacqueline C. Diggs '92  
Grant B. Dugan '81  
Alexander N. Dzinbal '17  
Robert and Eileen Eaton, P'06  
Harrison and Lyn Faas, P'07  
Dale Froriep, P'16  
Dylan M. Froriep '16  
Lee and Claire Froriep, GP'16  
Scott G. Furr '00  
Mark W. Gagnon '82  
Paul F. Gallagher '87  
Kurt A. Gavel '16  
Michael L. Gerardi '82  
Bill and Lisa Geschwilm, P'18  
Gokce Gomez '18  
David S. Greeley '76  
Todd S. Gregory '99  
Paul Gronwall '71  
Austin P. Guenther '06X  
John W. Hall '63  
Stephen E. Hancock '84  
Daniel H. Harris '85  
Nancy A. Harris '88  
Casey M. Harwood '11  
Patrick T. Hester '01  
David S. Homiak '75  
Erin Hub '16  
Jessica Hurt, P'01  
Alma C. M. Jacobson '01  
Donald R. Jacobson '01  
Peter E. Jaquith '65  
Christopher R. Johnson '18  
William and Donna Jordan, P'96  
Lauren N. Kadlec '09  
Robert and  
Wilma Kehl, P'91, GP'20  
Bradley S. Kell '80  
David and Sandra Kleiman, P'87  
Andrew R. Kondracki '83  
David C. Kring '88  
Harry and Elizabeth Lachtman, P'11  
Michael G. LaGrassa '07  
Christopher M. Lake '96  
Susan E. Lake '99  
Joshua R. Lambertsen '11  
Andrew R. Lange '06  
Peter J. Lapp '77  
Elisa Leberis  
Mr. and Mrs. Donald R. Lee, P'89  
Karl and Pamela Leivo, P'07  
Holly Lemoine  
Lindsey K. Lindgren '08  
Jeffrey S. Magrane '89  
Muriel Magrane, P'89  
James and Susan Manis, P'12  
Glen W. Margolis '85  
William J. Markuske '10  
Nikolas P. Martecchini '09  
Thomas P. Mastronarde '69  
Jim McMahon '85  
Douglas R. McPherson '75  
Cristian and Gabriela Mirica, P'21  
Mr. and Mrs. Timothy Mooradd  
David G. Moorhead '65  
Michael G. Morabito '05

### YOUNG AMERICA CLUB

\$250 to \$499

Amazon Smile Foundation  
Nigel and Sherry Beale, P'01  
Gerald E. Bellows '71  
Victor W. Bethge '53, GP'05  
Michael J. Bradford '75  
C. Pauline Breit, P'79  
Thomas P. Brewton '74  
Terry E. Brockett '62  
Gail A. Broome, P'91  
Peter D. Canning '72  
Brendan M. Carr '07

Honorary alumnus/a (Hon.) - Spouse of deceased alumnus/a (S) - Exchange student (E)- The names of deceased donors are *italicized*.



Justin M. Morgan '92  
Mr. and Mrs. Victor Mutnick, P'96  
New York Adventure Club, Inc.  
Gerardo E. Nixon '13  
Clarence and  
Bridget O'Connor, P'15  
Thomas J. Perrotti, Jr. '85  
William S. Peters '81  
Brian J. Petersen '07  
Patricia Pfluger, GP'17  
George H. Plude '54X  
Alan and Debbie Poritz, GP'15  
Herman S. Preiser '49  
John and Marybeth Pysz  
Lisa M. Read '97  
Taylor M. Reiss '18  
Scott Richards '77  
John M. Ringelberg PG'67  
Brandt and Helen Rising, P'93  
Richard A. Royce  
Joseph G. Rudnicki '73  
Arthur C. Sargent '53  
Dale Sartor  
Thomas D. Sartor  
Helen Schweighardt, GP'22  
Ash and Lauren Sharman, P21  
Edward Shope '59  
Jeffrey and Susan Slocum, P'10  
Emerson L. Smith '08  
Marc V. Smith '13  
Daniel J. Snyder '10  
Joseph and Julie Soja, P'13  
Raymond and Kiki Soletic, P'08  
Cody B. Stansky '16  
Joseph Stansky and  
Lynn O'Brien, P'16  
Oren L. Stephans '59  
Larry K. Stephens '63  
Daniel H. Thompson '57  
Janice Tindale, P'10  
Stephanie Van Denburg, P'01  
Adam H. Van Doren '08  
Kristin P. Van Doren '08  
Edward S. Van Dusen '67  
Phillip J. Wagner '78  
William G. Wallace '65  
Jonathan D. Ward '09  
Robert Webb, P'23  
Matthew Weklar '15  
Robert and Elizabeth Weklar, P'15  
D. Thomas Wendel '76  
Donald and Carolyn White, P'99  
Peter and Amiee Wiley, P'19  
Carl P. Wilson '51

Jocelyn Wilson (Hon.)  
Peter and Michele Wistort, P'17  
Donald and Stacey Wolczko, P'09  
Thomas and Lynn Wunder, P'14  
Diane Wunnicke  
Tin-Guen Yen '98  
Andrew S. Zahn '76  
Walter and Kathryn Zahray, P'14  
Gary R. Zane '77  
Aurore V. Zuzick '09

## DONORS

\$1 to \$249

Michael Abbruscato, P'11  
Michael A. Abbruscato '11  
Dorelle Ackermann  
Michelle L. Adam '97  
Karen L. Albanese  
Babara Allen Diaz  
Lynn Allen, GP'21  
AM Mechanical Technicians Group  
Kenneth C. Anderson '82  
Tom Annunziata and  
Gayle Johnson, GP'22  
Dennis F. Antweiler '71X  
John and Elaine Applegate  
John P. Archibald '75  
Andrew M. Arnold '17  
Jerry and Carol Aspland  
Anthony F. Attanasio '82  
Ryan J. Babb '02  
Lucy Bach, GP'21  
Cynthia Barber  
Matthew V. Barlin '97  
Robert I. Barra '07  
Nicholas D. Barron  
Thomas and Mary Barron  
Alexander D. Bashkoff '17  
Kyle C. Beattie '02  
Thomas A. Beckley '95  
Suzanne and Hank Beckstoffer  
Cheryl Bennett  
Janet Berger, P'96  
John R. Bergquist '99  
Jon and Kristin Bidwell, P'21  
Cathryn A. Bishop '12  
David and Julie Boland, GP'21  
Ray and Diana Boltz, P'12  
Ray Bovet  
Albert H. Bowers, III '62  
M. Spenser Boyd '17  
William L. Brinck '60

Casey P. Brown '16  
Chris Brown and  
Samira Hakki, P'16  
Donald and Robin Brown, P'85  
Jan Broz  
Kyle S. Brunelle '82  
Michael Bushnell '69  
Joedy W. Cambridge  
Bob Campbell and  
Carol Pomroy, GP'16  
James and  
Elizabeth Campbell, P'19  
Taylor Campbell '19  
Phyllis Canter  
Lauren Carballo  
James and Jean Card  
Arthur and Arlene Carlson  
John Carlson '14  
Erica L. Carter '92  
Joseph Cascio  
Esteban L. Castro-Feliciano '11  
Michael Chen '15  
Ada Cheung  
Paul M. and Carol Chevalier, P'00  
Ian Y. Cho '17  
Max and Laura Choi  
Ryan E. Chozick '18  
Walter B. Christmas PG '61  
Peter and Jean Cogan, GP'21  
Thomas B. Cole '60  
Commission on Independent  
Colleges & Universities  
Lou and Dorene Commisso, P'18  
Vincent R. Commisso '18  
Edward Comstock  
Robert M. Conachey '80  
Clayton Cooley, P'10  
Kenneth E. Court '60  
Martin and Donna Cover, P'92  
Karyn V. Cox '02  
Crowley Cares Foundation  
Jason M. Dahl '02  
Mark P. D'Angelo '07  
William C. Danilczyk '07  
Patty Davis, GP'19  
Matthew E. Denson '93  
Mr. and Mrs. George T.  
DeSpirito, P'03  
Ashley Dias '19  
Florence Dlugokecki, P'88, P'92  
John and Esther Dona, GP'15  
Daniel Dooley  
Sean R. Doran '12  
Spencer A. Dugan '17

Mara M. DuVernois '20  
Robert and Diane Dvorak, P'07  
John and Judith Edinger, P'99  
Lauren Egna  
Chris and Tola Eley  
Jon K. Elliott PG'68  
Allen D. Evans '61  
Johanna M. Exner '08  
Patrick D. Faas '07  
Jaye Falls '95  
Karl P. Farber '86  
David Farrell  
Nathan S. Fast '14  
W. Marshall Fettig '17  
John and Louise Fielding, P'96  
Wm. Jason Flatt '98, PG'99  
Peter W. Flemming '75  
Robert and Mary Fooks, P'85  
Robert P. Fooks '85  
Will N. France '72  
Nathan B. Frederickson '96  
Connie Frost  
Pastor Austin E. Ganly  
Tony Garifo  
Declan Gaylo '19  
Adam E. Geary '07  
Daniel B. Gebhardt '95  
Bradley J. Gelles '10  
Chase E. Geschwilm '18  
Matthew Gianforcaro '15  
Robert F. and Sandra Gill III, P'02  
Glosten  
Robert F. Glover, Jr. '85  
Robert D. Goldbach '58  
Oleg Golubev '16  
Elizabeth Gong  
Michael J. Goodwin '69  
Eugene H. Gotimer '90  
Thomas and Joan Gotta, P'07  
William T. Gotta '07  
Martha Grabowski  
Matthew Graham '14  
Mr. and Mrs. James U. Grant, P'98  
Tyler J. Gray-HoeHN '18  
Megan L. Green '18  
James A. Gretzky '80  
Paul and Ruth Guenther  
Nathan T. Hagan '12  
Robert W. Hall '67  
Nikki L. Hamilton P'22  
Patricia Harrigan  
William R. Harris '19  
Zachary J. Harris '11  
Kay Harrison Taber

Honorary alumnus/a (Hon.) - Spouse of deceased alumnus/a (S) - Exchange student (E) - The names of deceased donors are *italicized*.





Arthur L. Harrison '59  
Kenneth J. Harte '57X  
Andrew D. Harville '09  
Alexandra K. Heitman '19  
Patricia Hendrix, P'84  
John Hendryson, GP'22  
Robert and Susan Henry, P'97  
Barbara Herbermann, GP'21  
Isabel J. Hill '20  
William and Donna Hill, P'19  
Tom and Judy Hogan, GP'21  
Emily Hontoria  
Christopher G. Hooper '11  
Mark F. Huang '88  
Ralph R. Hubbard, Jr. '73  
Steven and Michiko Hughes, P'19  
Mark Hutchins  
Alexander Iley '14E  
Michael J. Imbesi '17  
Patricia B. Jeffers, P'01  
Robert S. Johnson '59  
Seth Jones '19  
Juniper Elbow Co., Inc.  
Jackson W. Juska '21  
Pamela Kan-Rice  
Toni Kboundi  
Matthew H. Kelley '88  
James Kelly '19  
Robert L. Kelly '46  
Steven L. Kerr '82  
Patrick and Eileen Kiely, GP'22  
Jocelyn Kleiger '19  
Michael E. Klein '11  
Robert and Nancy S.  
Kleinschmit, P'06  
Helen Kolsky  
Alexander and  
Paula Koziol III, P'21  
Carol Koziol, GP'21  
Alexei and Katya Kritsuk P'22  
Paul and Kit Kung  
Andrew J. Lachtman '11  
Henry and Jennifer Laible  
Alexander C. Landsburg '66X  
Ian M. Lawson '17  
Benjamin Lee '19  
Evan J. Lee '05  
Young and Sun Jung Lee, P'20  
Paul and Il Sim Lee, P'19  
Simon and Mabel Lee, P'05  
William Lehman, GP'22  
Sarah M. Leitner '95  
Lauren R. LeRoy '05  
Steven and Deborah Lilly P'22  
Margaret Liu, GP'21

Blake Loncharich '19  
Paul Loncharich, GP'19  
Donald and Patricia Look, P'09  
Brianna G. Louie '17  
Brandon Louis '18  
Anthony and Janet  
Luparello, GP'22  
Caroline Macri '87  
Wilbur J. Mahony PG '58  
Robert and Susan  
Malarkey, P'06, P'10  
Gabriel Mannheim and  
Andrea Platt, P'08  
Linda Manton  
Mariano's Cleaning Service, Inc.  
Alvin Marks, Jr.  
William C. Marrin, Jr. '59  
Michael Martin  
Steven C. Matz '88  
Ian W. McCauley '10  
Cherie McDougald  
Robert McGowan '62  
Mary E. McGuinness '20  
Joel S. McMinn '75, P'09  
Stuart H. Mennitt '86  
Jean Migliozi, GP'20  
Peter Miller  
Brian T. Mills '16  
David and Cynthia Minnich, P'08  
John R. Mixon '97  
Molloy College  
Melissa K. Morgan '86  
James M. Moss '97  
Robert and Lois Motley  
Ilya Mouravieff '16  
Sarah Mouring  
Dorothy A. Mulford  
Mr. and Mrs. Gerhardt G.  
Muller, P'94  
John and Anna Mulvihill, P'84  
Todd R. Nass '80  
John Neff  
Randall Neureuter '14  
Melissa Newkirk  
Alison Ng and Lilian Hsu, P'20  
Josiah Ng '19  
Andrew J. Nowakowski '10  
RADM Robert C. and  
Maureen Olsen, Jr. (Hon.)  
Adrian S. Onas  
Cody C. Owen '15  
Robert H. Owens '77  
Alice Panek '18  
Robert and Bonna Leah  
Patrick, P'08

Laura K. Patterson '09  
Elwin R. and  
Maureen Paulhus, P'85  
Ralph and Mary Lou Peak, GP'00  
George L. Petrie '70  
Craig Philip  
Andrew Pidduck '19  
John T. Pierce PG '63  
Andrew W. Polay '00  
Neil and Judith Polay, P'00  
Gabriel Poritz '15  
Karl A. Pritchard '87  
David and Karen Przelomski, P'16  
Dylan Przelomski '16  
Alfred I. Raff '58  
Dominique and  
Holly Ratinaud, P'18  
Marilyn Read, P'97  
Robert K. Richardson '60  
Lawrence and Eilene Riemer, P'05  
Geoffrey S. Rivinius '75  
Tom and Mary Ann Rockwell, P'15  
James and Bridget Rodgers P'22  
Gilbert Romano  
Christopher Rose '11  
Daniel Rosenblatt  
Robert Rosenblatt  
Daniel Roske '19  
Lana Roske, GP'19  
Frank and Mary Rouland, GP'21  
Jonathan A. Roussin '17  
Joan Russo, P'98  
Thomas and Megan Ryan, P'88  
Ryan W. Sadlo '07  
Alfred H. Schwendtner '54  
Mr. and Mrs. Barth  
Semenoro, P'95  
James J. Shaughnessy '89  
Justin P. Shell '08  
Yuelian Shen, P'21  
Richard B. Siek '74  
Joern Ilja and Silke Siepmann, P'17  
Tim C. Siepmann '17  
Michael L. Silber '63  
Robert Silence '76  
John W. Sims '52  
Mark Skinner '67X  
Nathan A. Smith '01  
Patricia C. Smith, P'76  
Luke C. Soletic '08  
Barry M. Solomon '87  
Lynn Sosa and Jeff Parkin, P'08  
Michael Soupis  
George and Nancy Stebe, P'08  
Michelle Stein

Robert B. Steinbach '72  
Bruce H. Stephan  
Richard L. Storch '67  
Robert J. Stortstrom '77  
John and Kimberly Strassner  
Sarah Stretch '19  
Kelly J. Sturdy '16  
Abishai Thomas '19  
Dylan F. Throckmorton '18  
Easton Tilicki '19  
Phil and Niki Tilicki, P'19  
Jessica K. Tomczak '08  
Saveria Tornicchio  
Jeanne E. Torstenson '93, PG'97  
Kirk E. Torstenson '93  
Martin and Dorine Toyen  
Owen W. Tredennick '97  
Cindy Trueman  
Barr Turner Jr. '17  
Martin and Janice Unfried  
Carol A. Vernon '83  
Donald and Ursula Vernon, P'83  
Johanna Vetri, GP'22  
Paul R. Vragel '72  
Carrol Wagers, GP'22  
Harold E. and  
Elizabeth Waldner, P'93  
Britton R. Ward '95  
David and Doreen Ward, P'09  
Stephen and Donna Warnes  
Robert Waterhouse and  
Linda Ziedrich, P'13  
Jerome and Carol  
Waters, P'89, GP'20  
Muriel Weathers '19  
Robert and Marilyn  
Weathers, GP'19  
Paul T. Weber '92  
Gabriel D. Weymouth '01  
Katherine A. Whalen '11  
Marcin H. Whitman '81  
Andrew D. Wiggins '03  
George and Sally Wiley, GP'19  
Peter Wiley '19  
Richard Willdigg  
Avram and Mary Ellen  
Wiseman, P'11  
Hannah M. Wistort '17  
Su Mo and Grace Wu, GP'20  
Gerard and Janet Yarka, P'20  
Timothy Yen '04  
Don B. Young '60  
Anonymous (9)

Honorary alumnus/a (Hon.) - Spouse of deceased alumnus/a (S) - Exchange student (E)- The names of deceased donors are *italicized*.



# Remembering Johanna Lee Exner '08

by Alana Duerr '08

Strong, smart, witty, self-deprecating, kind, thoughtful, caring, hardworking, thrifty, creative—these are the first adjectives that come to mind when I think of Jo. Like all of us in our class, I have many fond memories of Jo, and words do not describe our collective heartbreak when we found out that her life had unexpectedly ended this summer after a very brief battle with cancer.

Given Webb's small class sizes, each person leaves an indelible mark on his or her class, and the Class of 2008 is no exception. Jo was the girls' girl who could keep up with the guys and put them in their place when needed. She was quick with a quippy (and often self-deprecating) joke and a laugh. She was also smart and driven, and she and her thesis partner won the Lewis Nixon Memorial Prize at graduation.

Jo not only had an impact on our class but on all of Webb while we were on campus. Jo loved music, played piano, and graced the Webb Family Singers with her voice over her four years at Webb, and she also served as the social chair for at least two years. She came up with party themes and always selflessly lent a hand to help people find clothes, make clothes, go thrift store shopping, and do the girls' (and sometimes the boys') hair and makeup.

After Webb, Jo moved to Ft. Lauderdale. She was the first person in our class to endeavor to earn a professional engineers' license, and, of course, she passed. In the midst of her professional success at Murray and Associates, she met her husband Mark. They had their first daughter, Kelsey, in 2016, and their second daughter, Colleen, in 2018. She was a loving and devoted wife and mother. In early 2019, they relocated from the Fort Lauderdale area to Houston.

Jo's Memorial Service was held on August 3, 2019, outside Houston attended by friends, family, and over twenty Webb alumni. There were lots of hugs and tears, but also a lot of laughter as we remembered all of the wonderful times with her.

Jo is the first Webb alumna to leave this earth, and we can all agree that it was far too soon. If you have any pictures or memories of Jo that you'd like to share with Mark, their girls, or her family, please send them to me at [rememberingjoexner@gmail.com](mailto:rememberingjoexner@gmail.com). A college savings account has been set up for Jo's girls, and if anyone is interested in supporting them, please visit: <https://www.gofundme.com/f/johannas-girls>.



Johanna singing at Webbstock in 2007



Johanna with classmates at the 2006 Halloween party



## 2018-2019 DONATIONS

# CUMULATIVE GIVING

The William H. Webb Society honors and celebrates the extraordinary commitment of Webb's most loyal contributors—those donors whose cumulative giving exceeds \$25,000. We extend our sincere appreciation to the following alumni, trustees, parents of alumni and students, friends, corporations and foundations, who are members of the William H. Webb Cumulative Giving Society.

### ENTERPRISE

**\$2,500,000+**

American Bureau of Shipping  
Arthur and Marilyn Burr '54  
John C. Couch (Hon.)  
*Jon Couch*  
Joseph J. Cuneo '57  
*Harold "Gerry" F. and  
Marguerite Lenfest*  
*J. Lewis and Kate I. Luckenbach*  
*Stephen R. Towne '40*  
*Peter Van Dyke '60*  
*William H. Webb*  
*Alfred M. and Joyce Zeien '52*

### LAUREATE FELLOWS

**\$1,000,000 to \$2,499,999**

Donald T. Bollinger (Hon.)  
*John O. Crafts 1902*  
ExxonMobil Foundation  
Richard A. Goldbach '58  
*James J. Henry '35*  
*Allen N. and Cordella M. Hoyt '36*  
*H. Smith McKann '38*  
McMullen Family Foundation  
*John J. McMullen (Hon.)*  
*James G. Motley 1914*  
*Philip J. Sims '71*

### LAUREATE SUSTAINERS

**\$500,000 to \$999,999**

*William J. Blanton, Jr. '71*  
Kenneth L. Heitner '64  
Herman D. Pollock Family  
Foundation  
*John and Georgette Livingston '24*  
*Joseph Mazurek (Hon.)*  
*R. Keith Michel '73 (n)*  
*John W. Russell '67*  
The TK Foundation/Orange  
Community  
Foundation  
The G. Unger Vetlesen  
Foundation (n)

### LAUREATE LEADERS

**\$250,000 to \$499,999**

Victor W. Bethge '53, GP'05  
Donald L. Caldera '57 (n)  
Crowley Maritime Corporation  
Jerry W. Cuthbert '56  
The Dixon Family  
*Leslie B. Durant '39*  
*Philip R. Faurot '51*  
Kenneth W. Fisher '64  
GAMCO Asset Management  
Company

Thomas W. Gillette '52 (n)  
George A. Gilmore '57 (n)  
Glostien  
Robert D. Goldbach '58  
*Jacques B. Hadler (Hon.)*  
*A. Dudley Haff '37*  
*Robert K. Kistler '46*  
*Duane H. Laible '62*  
*Willard V. Markey '35*  
*Wayne D. Martin '67*  
*Robert G. Mende '51*  
*John W. Newcomb '66*  
*Owen H. Oakley '37*  
*John F. O'Dea '68 (n)*  
*Richard Pomfret '62*  
*Lester Rosenblatt, Sc.D. (Hon.)*  
*Reuben W. Taylor, Jr. '55*  
*The James J. Henry  
Charitable Trust*  
The Robert David Lion  
Gardiner Foundation, Inc.  
Richard W. Thorpe '55  
Anthony A. Urbanelli '75  
Peter F. Weber '74 (n)  
Thomas A. Wheaton '77

### FOUNDING

**\$100,000 to \$249,999**

*Mario Iacobucci Andrea '39*  
*Carl B. and Florence H. Aster '25*  
*William B. Bartling '13 (n)*  
*Joyce P. Bethge (Hon.)*  
G. William Birkhead '63  
Boeing Matching Gift Program  
David M. Bovet '70  
Joseph L. Brennan '79  
Joseph A. Burns '62 (n)  
Thomas and Susan Burns, P'08  
Drs. George and Mary Campbell  
Jay P. Carson '73  
Richard C. Celotto '73  
Chevron Humankind Employee  
Funds (n)  
R. Perry Connell '97  
*Alexander Delli Paoli '50*  
*Stephen and Margaret Dvorak '50*  
*S. Allen Face III '70*  
*Thomas F. FitzGerald '34*  
*Lawrence R. Glosten '40*  
Alison and  
Hal Granger, P'14 (Hon.)  
*Frank J. and Anne Graziano (Hon.)*  
James Harvie '55 (n)  
Paul W. Hayes '54  
Robert J. Healy '83 (n)  
*Clifford E. and Flora Hoitt '34*  
*Ronald K. Kiss '63 and  
June Kiss '63S*  
*Carl E. Kreidler 1920*  
Charles Kurz II (Hon.)  
Jon J. '76 and Deborah W. LaBerge  
Horton W. Lain '55  
Timothy S. Leach '91  
Eric and Pat Linsner '70

MJS Foundation  
*Justin H. '55 and  
Sarah McCarthy '55S*  
John A. Malone '71  
Thomas N. Manuel '54  
Mark F. Martecchini '79, P'09  
Gregory '89 and Rosanne Matzat  
*Roy P. McPherson '44B*  
Metro Machine Corp.  
*Walter H. Michel, Jr. '39*  
Richard P. Neilson '70 (n)  
Jake M. Neuman '93  
Huntington Ingalls,  
Newport News  
Ronald C. Olander '55  
*Robert H. Owens '44A*  
Steven Pagan '88 (n)  
John R. Paul '69  
*Randolph H. Pritchard 1918*  
Marian R. Quick  
*Stanley L. Quick '44A*  
*John K. Roper '53*  
Bruce S. Rosenblatt (Hon.)  
*Clayton E. and Joan Royce '46*  
George A. Sawyer  
Steven T. Scalzo  
Joseph A. Schetz '58  
*Daniel '58 and  
Ellen Schorsch '58S, GP'19 (n)*  
Eugene Schorsch '52 (n)  
*Victor E. Scottron '36*  
Joseph A. Signorelli '54  
Peter A. Silvia '62  
Paul G. Snyder '69 (n)  
John A. Springer III '82  
*James E. Steele '41*  
David and Christine Stone, P'06  
Steve M. Stone '06  
*Walmer E. Strobe '42*  
Luther Tai (n)  
*Thomas S. Taylor '53*  
The Arthur Vining Davis  
Foundations  
The Bostonian Society/  
Boston Historical  
The Society of Naval Architects &  
Marine Engineers  
William duBarry Thomas '51  
Homer N. Wallin, Jr. PG'62  
*Edward B. Warchol '37*  
Lawrence W. Ward PG'51  
*Edward R. Weber '42*  
Geoffrey D. M. Wilkie '82  
W. Brett Wilson '75  
*Charles Zeien '50*

### SUSTAINING

**\$50,000 to \$99,999**

Benjamin B. Ackers '97  
Catherine M. Anderson '93  
Barbara L. Aster  
Paul and Julie Backas, P'16 (n)  
F. Roland Bjorklund '66  
Thomas H. Bond '45

Stephen R. Breit '79 (n)  
Judson B. Broome '91  
Peter C. Bryn '06  
Steven G. Buttner '70  
*Lincoln D. Cathers '56 and  
Nancy Cathers '56S (n)*  
Paul D. Chapman '67  
Roger H. Compton '61, PG'64  
Alvin E. Cox '41  
Paul H. Diehl '56  
Philip S. Douthit '72  
Edward C. DuMont  
Richard G. Eddy '55  
John L.R. Edgar III, '87 and  
Alicia H. Edgar  
*Frederick P. Eisenbiegler '46*  
Peter B. Fontneau '68  
*Fred H. Forrest*  
Foss Maritime Co.  
Foss Marine Holdings, Inc.  
Gabelli Foundation  
Peter A. Gale '59  
John P. Gallagher '74  
General Electric Corporation  
Richard A. Gilmore '77  
James N. Greenlees '72  
*Jerrier A. Haddad (Hon.)*  
William B. Hale '78 (n)  
Raymond S. Hall, Jr. '58  
Manuel G. Hontoria '88  
Illinois Tool Works Foundation  
William E. Jenkins  
Jewish Communal Fund/  
Gabelli Foundation  
Stephen R. Judson '74  
*Edmund T. Klemmer '44B*  
David H. Klings (Hon.) (n)  
*Ulrich H. Koch '55*  
*Joseph A. Kochanczyk '41*  
Richard and Jennifer '91 Kollmer  
Thomas E. Koster '67  
Kurz Foundation  
*Dorothy J. Kurz*  
*Maurice J. Laurier '50*  
David S. Lawson, Jr. '55 (n)  
Gabriel F. Lefebvre, Jr. '52  
Lockheed Martin Corporation  
Foundation  
*Harrison T. Loeser '43 (n)*  
David and Rebecca Louie, P'17  
M. Rosenblatt & Son, Inc.  
Endel Mann '60  
*Albert M. Martinson, Jr. '53*  
Greggory B. Mendenhall  
Paul B. Mentz '64 (n)  
Eugene R. Miller, Jr. '64, P'96  
Eugene R. Miller III '96  
*Richards T. Miller '40*  
Francis X. Nicastro '56  
Jennifer B. Panosky '85  
Princeton University  
Joseph H. Pyne  
*Edward Renshaw '44A*  
Scott Richards '77  
Richard Schmitt '62  
Schwab Charitable

New member (n) - Honorary alumnus/a (Hon.) - Spouse of deceased alumnus/a (S) - Exchange student (E) - The names of deceased donors are *italicized*.



Alfred H. Schwendtner '54  
SeaRiver Maritime, Inc.  
John J. Slager '49 (n)  
Ted A. Slotwinski '73  
Richard A. Smith '03  
David G. St. Amand '77  
Winston B. Sutter '53  
Matthew P. '91 and  
Catherine A. '94 Tedesco (n)  
The Ambrose Monell Foundation  
Michael W. Toner  
Christopher N. Tupper '75  
John D. Van Buskirk '76  
Paul G. Vibrans '71 (n)  
Edward V. Vienckowski '78  
Charles G. Visconti '55  
Bob vom Saal '67  
Thomas J. '89 and  
Jennifer K. '91 Waters, P'20  
Webb Alumni Association  
*Capt. and Mrs. William E. Weisert, USN (Ret.)*  
Michael J. Whalen '79  
Steven F. Wolgamot '69  
*Adin K. Woodward '43*  
Anonymous

## LEADERSHIP

\$25,000 to \$49,999

Paulo A. Almeida '95  
Ronald J. Altmann '63  
Amgen Foundation  
Jonathan R. Amy '70  
*Paul E. Atkinson '42*  
*Montgomery Banister '44A*  
Bank of America Foundation  
David B. Benson '56 (n)  
George J. Berger '66  
BMT Designers and Planners  
Robert H. Bolling '97  
Gary Bornstein (n)  
*Timothy N. Buffum '44A*  
*Edward J. Campbell*  
Thomas W. Campbell '69, P'99

David S. Chapman '72  
Jane Loeser (n)  
Lou Codega '78, P'14  
Con Edison  
Charles N. Corrado '83  
*Michael Costagliola '42*  
John N. Costello, Jr. '89  
Lowell and Christine Dickerson '10  
Victoria Dlugokecki '88  
*R. Peaslee and Virginia DuMont '32*  
James R. Dwyer '72  
*Kathleen W. Eddy*  
Brian P. R. Eisenhower '06  
Enron Corporation  
Courtney C. Ewing '05  
ExxonMobil  
*James A. Fay '44B*  
Richard and Marylou Ferrieri, P'11  
Paul and Carolyn Fleming, P'12 (n)  
R. Mark Forssell '55  
Matthew R. Fox '04  
*C. Larry French Sc.D. (Hon.)*  
Geoffrey D. Fuller '72  
Anne M. Fullerton '99  
Pastor Austin E. Ganly  
*Edward F. Ganly '36*  
Charles Garland '58  
Jacob M. Genauer '10  
General Dynamics NASSCO  
Patrick J. Gilmartin (Hon.)  
John L. Glaeser '68, P'03  
Douglas M. Gluntz '57  
Arthur L. and Vida F. Goldstein  
Richard S. Graham '83 (n)  
Leslie M. Gray III '68  
David L. and  
Penelope Greene, P'95  
Christoph A. Grueneis '92  
Steven and Marian  
Guglielmoni, P'12 (n)  
James R. Hancock '67  
*Howard M. Hardy '38*  
Scott and Jan Harlan, P'12  
Theresa Haven '92  
Mark R. Henry '62

Taylor M. Herinckx '06 (n)  
*John G. Hill '36*  
*William C. and Anne P. Hindle, Jr.*  
*John D. Holman*  
*Albert S. Hove '55*  
William C. Hurt III '59  
D. Michael Hutchings '95 (n)  
*George A. Johnson '36*  
Peter A. Johnson '56  
Ralph E. Johnson '68  
Roy E. Johnson '62  
*Frank Joyce '44A*  
*Anthony Karpich '36*  
Stephen D. Koopman '91 (n)  
Stefan Kuczera '15 and  
Erin McElroy '15 (n)  
*Frank A. Kuntz '40*  
*Alfred Kurzenhauser '51*  
*George Laing 1912*  
Marc T. Limeri '77  
*Carl E. Lindholm, Jr. '50*  
Bridget F. Lisnyk-Washlack '63S  
(Hon.)  
Lloyd's Register of Shipping  
Christopher T. Loeser '70  
Douglas J. Loeser '73  
*Carolyn MacCormack*  
*Edward M. MacCutcheon '37*  
Daniel A. Malarkey '06  
Henry S. Marcus '65 (n)  
Maritrans, Inc.  
Marsh & McLennan Companies  
Matson Navigation Company  
Joel S. McMinn '75, P'09  
Stephen T. '08 and  
Kathleen Cain '07 Minnich (n)  
Brent J. Morrison '11  
*James A. Mulcahey '42*  
*Richard A. Mulford '61*  
*John J. Nachtsheim '47*  
Wing and Sufinsa Ng, P'19 (n)  
Liam C. O'Connell '98 (n)  
Warren W. Oliver, Jr. '50  
Jay E. Paris '64  
Jonathan G. Parrott '79  
George L. Phillips '51

*Robert V. Pierce '50*  
Charles G. Pieroth '61, PG'64  
Russell C. Pollock '08  
Philip M. Poullada '78  
David C. Purdy '50  
Irving C. Raphael '67  
Raytheon Systems Company/  
Matching Gifts  
Benjamin E. Rising '93  
*Paul W. Risseuw '65*  
David R. Rodger '63  
Rolls-Royce Naval Marine Inc.  
Wombi S. Rose '09  
Karen G. Rossbach '91  
James W. Royle, Jr. '66  
Eric Runnerstrom '69  
Kit Ryan '67  
Christian Saether '75  
Lewis R. Sheldon III '73  
Steven and Melissa Shepstone '77  
The Gerda and Ole Skaarup  
Foundation  
J. William Smith '63  
Richard A. Smith '76  
Richard T. Soper (Hon.)  
*Walter W. Spalckhaver 1922*  
*Joseph F. Stroschein '56 (n)*  
VADM Paul E. Sullivan  
*Henry B. Suydam '43*  
*Robert Taggart '42*  
*Philip Thiel '43*  
*Charles E. Thornhill '43*  
*Joseph '43 and Gertrude Thornton*  
Thomas P. Tindale '10 (n)  
Edmund G. Tornay '56  
Robert Turoff, P'15  
Stephen A. Van Dyck  
J. Michael Wallace '62 (n)  
Abbott D. Weiss '63  
Wells Fargo Educational Matching  
Gift Program  
*Robert L. Williams '54*  
Meldon J. Wolfgang IV '93  
*Frank W. Wood '40*  
Robert B. Zubaly '55  
Anonymous (2)

New member (n) - Honorary alumnus/a (Hon.) - Spouse of deceased alumnus/a (S) - Exchange student (E) - The names of deceased donors are *italicized*.





## WEBB HERITAGE SOCIETY CONTRIBUTES 36% OF THE CAMPAIGN FOR WEBB TOTAL

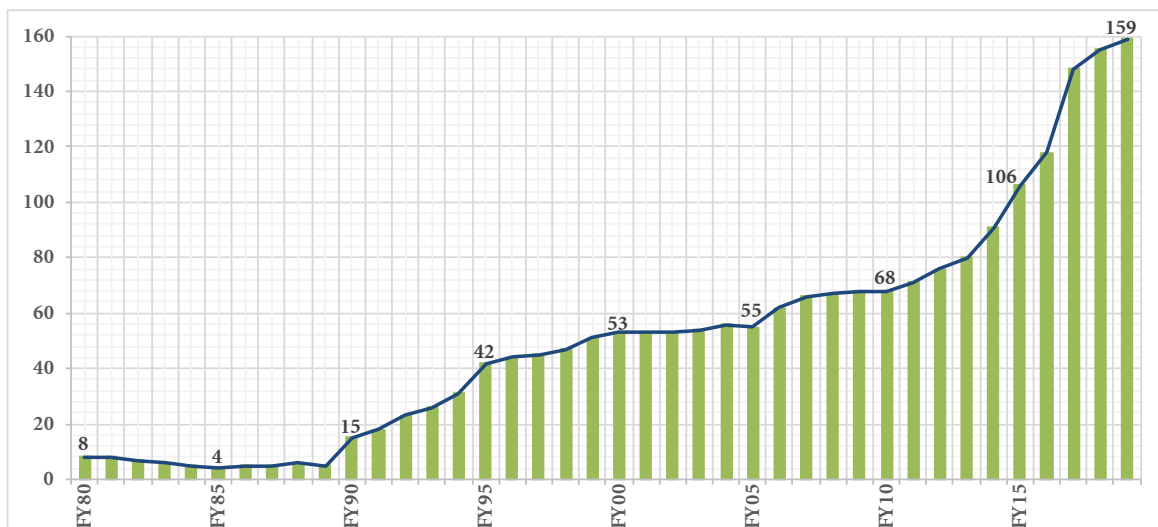
**John Malone '71**  
PLANNED GIVING CHAIR

It's no surprise that much of this Annual Report is devoted to celebrating the phenomenal success of the *Campaign for Webb*. When we think of how it happened, the images that likely come to mind are folks writing large checks, increasing their Annual Fund contributions, making multi-year pledges over the duration of the Campaign, and/or donating appreciated stock or other assets. In actuality, \$18.3 million—36% of the Campaign's \$51.6 million—was received by Webb in the form of planned gifts from members of the Webb Heritage Society. Yes, over the six-year Campaign, Webb “booked” \$18.3 million in planned gifts, of which \$6.7 million was realized during the Campaign, with the balance of \$11.6 million to be realized down the road. Whenever those funds are realized (hopefully *a long way* down the road), they will be applied to reduce the annual draw on the endowment, to retire outstanding loans that funded capital improvement projects, to enhance the endowment, and to address infrastructure or program needs, or some combination thereof. In short, planned gifts are the key to securing Webb's financial future, and that is why our efforts to grow the Heritage Society must remain vigorous in the afterglow of the *Campaign for Webb* and beyond. At this moment, it is fitting to reflect on our recent

success and to thank those responsible. First and foremost, I am pleased to welcome the 11 new members of the Heritage Society who joined in 2018-19: Peter C. Bryn '06, Joseph A. Burns '62, Marguerite Lenfest (friend), Paul B. Mentz '64, Joshua Michel (friend), John F. O'Dea '68, Kevin Prichard '18, John J. Slager '49, Paul G. Snyder '69, Jason P. Updegraph '01, and Paul G. Vibrans '71. As evidenced by these new members, the Heritage Society includes alums and non-alums alike, and people of all ages—from a graduate of just one year ago to a graduate of 70 years ago! Sadly, five Heritage Society members passed away in 2018-19 (Hayden A. Carney '58, William J. Hooker '53, Edmund T. Klemmer '44B, Harold F. Lenfest (Hon.) and Thomas S. Taylor '53). Webb now has a record 159 living members of the Heritage Society, including the 96 living members who have joined this special group during the six-year Campaign. The value of planned gifts booked in 2018-19 was over \$1.1 million.

I would also like to thank my colleagues on the Capital Campaign Cabinet—Campaign Chairman Joe Cuneo '57, John Couch (Hon.), Alison Granger P'14, Keith Michel '73, Jake Neuman '93, Tony Urbanelli '75, Roy Johnson '62—and Director of Development, Anthony Zic, for

LIVING MEMBERS IN THE  
HERITAGE SOCIETY



YEAR

their tireless efforts to generate planned gifts as well as immediate gifts throughout the Campaign.

The Annual Heritage Society Reception and Dinner—a celebration to underscore Webb's appreciation for its Heritage Society members—was hosted by President Keith Michel on May 17 at the President's House. There were over 70 attendees (setting a new attendance record), including Heritage Society members and spouses from all Webb constituencies and age groups, as well as the 50th anniversary Class of '69. The group of Webb students who prepared and served the three-course dinner did so as a tribute to Peggy Michel who was the organizer and *chef de cuisine* for this event from its inception in 2014 until her passing in August 2018. The evening included a few welcoming remarks by President Michel, a status report on the *Campaign for Webb* by Joe Cuneo, and my own

comments on the growth of the Heritage Society in 2018-19 and the fact that the Class of 1954 remains the only class to have 100% participation in the Heritage Society. At the conclusion of the evening, each Heritage Society member was given a pair of Webb-logo wine glasses as a parting gift and token of appreciation for their commitment to Webb. Everyone had a delightful time, and we eagerly look forward to seeing new and familiar faces at next year's event.

The Webb Heritage Society is certainly a very special group within the Webb Family. Its members have emulated William H. Webb by including Webb Institute in their estate plans, and in so doing they leave a lasting legacy which helps to ensure Webb's intergenerational sustainability.



(l to r) Keith Michel '73 and student volunteers: Ioana Mirica, Isabel Hill '20, Mary McGuinness '20, Luke Kiely '22, Muriel Weathers '19, Blake Loncharich '19, Chris Bal '20, Jonathan Wang '20, Kevin Lu, Toni-Marie Gossage '22, and Reneé Tremblay '20



Keith Michel '73 with Paul Snyder '69 and Eric Runnerstrom '69



Class of '69 table at 2019 the Heritage Society Dinner

For more information on Webb's Heritage Society, including information on various ways to make a planned gift and how to become a member, please call our Director of Development, Anthony Zic at 516-759-2040 or email him at [azic@webb.edu](mailto:azic@webb.edu).

All members receive a Heritage Society pin, a Young America drawing suitable for framing, recognition in the Lenfest Gallery, and an invitation to the annual Heritage Society Reception and Dinner.



Webb Institute is fortunate to have alumni and friends whose dedication to the institution has inspired them to leave a lasting legacy. There are members of the Heritage Society as young as members of the Class of 2018—so you see, it is never too early to consider Webb in your future plans. Legacy gifts are the cornerstone upon which Webb was built, and they will continue to play a vital role in Webb's finances. These thoughtful gifts provide Webb with the fiscal strength and security needed for future generations.

*To learn more about planned giving visit our website, or contact Anthony R. Zic,  
Webb's Director of Development at 516-759-2040 or azic@webb.edu.*

Mario Iacobucci Andrea '39	Fred Forrest	George Laing 1912
Albert L. Balestiere '47	R. Mark Forssell '55	Maurice J. Laurier '50
Montgomery Banister '44A	Peter A. Gale '59	Harold "Gerry" F. and Marguerite Lenfest (n)
Sherman H. Barber '34	Edward F. Ganly '36	D. William and Gail Lerch III '52
Roderick A. Barr '60	Charles Garland '58	Christopher Licato '15
David B. Benson '56	Jacob M. Genauer '10	Carl E. Lindholm, Jr. '50
Joyce P. Bethge (Hon.)	George A. Gilmore '57	Eric and Pat Linsner '70
Victor W. Bethge '53, GP'05	Richard A. Gilmore '77	G. James and Barbara Lippmann '51
F. Roland Bjorklund '66	Lawrence R. Glosen '40	John A. and Georgette Livingston '24
Matthew D. Blake '78	Douglas M. Gluntz '57	Harrison T. Loeser '43
William J. Blanton, Jr. '71	Richard A. Goldbach '58	J. Lewis and Kate I. Luckenbach
Thomas H. Bond '45	Robert D. Goldbach '58	John A. and Amy Malone '71
David M. Bovet '70	Michael J. Goodwin '69	Thomas N. Manuel '54
W. Porter Bratten III '08	Alison and Hal Granger, P'14 (Hon.)	Henry S. Marcus '65
Peter C. Bryn '06 (n)	Samuel Granger '14	Willard V. Markey '35
Arthur and Marilyn Burr '54	Leslie M. Gray III '68	Nikolas P. Martecchini '09
Theresa Burr	Frank J. and Anne Graziano (Hon.)	Albert M. Martinson, Jr. '53
Joseph A. Burns '62 (n)	John L. Greene PG'55	Walter C. Maximowicz '36
Eileen Caddell	James N. Greenlees '72	Joseph Mazurek (Hon.)
Donald L. Caldera '57	Gregory M. Griffin '77	Justin H. '55 and Sarah McCarthy '55S
Drs. George and Mary Campbell	Jacques B. Hadler (Hon.)	H. Smith McKann '38
Hayden A. and Pamela Carney '58	A. Dudley and Ruth Haff '37	Joel S. McMinn '75, P'09
Jay P. Carson '73	Raymond S. Hall, Jr. '58	John J. McMullen (Hon.)
Robert M. Cashman '40	Barbara Hamlin (Hon.)	Roy P. McPherson '44B
Lincoln D. Cathers '56	Norman A. Hamlin '44B	Robert G. Mende '51
Richard C. Celotto '73	James Harvie '55	Paul B. Mentz '64 (n)
Paul D. Chapman '67	Theresa Haven '92	Joshua Michel and Beth Pysz (n)
W. Edward Christiansen '58	Paul W. Hayes '54	R. Keith '73 and Peggy Michel
William A. Cleary, Jr. '51	Kenneth L. Heitner '64	Walter H. Michel, Jr. '39
Roger H. Compton '61, PG'64	David A. Helgerson '77	Kathleen Cain '07 Minnich
Charles N. Corrado '83	James J. Henry '35	Stephen T. Minnich '08
Michael Costagliola '42	Mark R. Henry '62	Brent J. Morrison '11
John C. Couch (Hon.)	Halsey C. Herreshoff '55	Edmund C. Mortimer PG'63
Jon Couch	William C. and Anne P. Hindle, Jr.	James G. and Helen S. Motley 1914
Richard B. Couch '33	Russell H. Hoffman '74	Joseph D. Mott, Jr. '75
John O. Crafts 1902	Clifford E. and Flora Hoitt '34	John J. Nachtsheim '47
Joseph J. Cuneo '57	William J. Hooker '53	Richard P. Neilson '70
Jerry W. Cuthbert '56	John C. Hootman '01	Jake M. Neuman '93
Joy Davis	Allen N. and Cordella Hoyt '36	John W. Newcomb '66
Charles R. and Lark D. de Cuir	Erin Hub '16	Frank J. Nicosia 1918
Philomene J. DeHart	Peter E. Jaquith '65	John C. Niedermair 1918
Victor J. Dietz '35	Christopher R. Johnson '18	John F. O'Dea '68 (n)
Hampton K. Dixon '11	Ralph E. Johnson '68	Ronald C. Olander '55
Satchel Douglas '15	Roy E. Johnson '62	Warren W. Oliver, Jr. '50
Jonathan H. Dowsett '09	Otto J. and Maria R. Karst	Robert H. and Harriet Owens '44A
William V. Duggan	Ronald K. '63 and June Kiss '63S (Hon.)	Steven Pagan '88
R. Peaslee and Virginia DuMont '32	Robert K. Kistler '46	Jennifer B. Panosky '85
Stephen C. and Margaret Dvorak '50	Edmund T. Klemmer '44B	Jay E. and Phyllis Paris '64
Kathleen W. Eddy	David H. and Jean R. Klings (Hon.)	David Pedrick '70
Richard G. Eddy '55	Richard and Jennifer '91 Kollmer	Herman D. Pollock Family Foundation
John L.R. III '87 and Alicia H. Edgar	Carl E. Kreidler 1920	Richard Pomfret '62
Robert L. and Irene Edin '54	Edwin Kreidler	Philip M. Poullada '78
Frederick P. Eisenbiegler '46	Stefan Kuczera '15	Kevin Prichard '18 (n)
Courtney C. Ewing '05	Frank A. Kuntz '40	Randolph H. Pritchard 1918
Frank P. Falci, Jr. '54	Charles Kurz II (Hon.)	Stanley L. and Marian Quick '44A
Philip R. Faurot '51	Dorothy J. Kurz	Edward Renshaw '44A
Kenneth W. Fisher '64	Jon J. '76 and Deborah W. LaBerge	Scott (Scrich) Richards '77
Thomas F. FitzGerald '34	Duane H. and Diane Laible '62	Thomas C. Rider '82
George F. Fonger '29	Horton W. Lain '55	Geoffrey S. Rivinius '75

New member (n) - Honorary alumnus/a (Hon.) - Spouse of deceased alumnus/a (S) - Exchange student (E)- The names of deceased donors are *italicized*.



Erin Hub '16 and Jonathan Roussin '17



Amy Malone, Pat Linsner, John Malone '71, Steven '69 and Karen Wolgamot



Bruce Rosenblatt (Hon.) and Halsey Herreshoff '55



Dottie and Rob Goldbach '58

David R. Rodger '63  
 John K. Roper '53  
 Wombi S. Rose '09  
 Bruce S. Rosenblatt (Hon.)  
 Lester Rosenblatt (Hon.)  
 Clayton E. and Joan Royce '46  
 Richard A. Royce  
 James W. Royle, Jr. '66  
 John W. Russell and Mary E. Fellows '67  
 Kit Ryan '67  
 Albert W. Schede 1910  
 Joseph A. Schetz '58  
 Richard Schmitt '62  
 Charles J. Schoefer '35  
 Daniel '58 and Ellen Schorsch '58S, GP'19  
 Eugene Schorsch '52  
 Alfred H. Schwendtner '54  
 Alexander L. Scott '10  
 Victor E. Scottron '36  
 Dorothy Seeholzer  
 Frederick Seibold, Jr. '61  
 James J. Shaughnessy '89  
 James S. Shelton '30  
 Steven C. Shepstone '77  
 Paul Sieswerda  
 Joseph A. Signorelli '54  
 Peter A. Silvia '62  
 Philip J. Sims '71

Elizabeth M. Singleton '07  
 John J. Slager '49 (n)  
 J. William Smith '63  
 Richard A. Smith '76  
 Paul G. Snyder '69 (n)  
 Leah R. Sosa '08  
 John F. and Irene Stahlin P'66  
 Richard A. and Suzanne Stearn '39  
 James E. Steele '41  
 Marjorie S. Stockdale  
 Walmer E. Strobe '42  
 Gailmarie Sujeci (Hon.)  
 Robert Taggart '42  
 Thomas S. Taylor '53  
 Catherine A. '94 Tedesco  
 Matthew P. '91 Tedesco  
 Philip Thiel '43  
 William duBarry Thomas '51  
 Daniel H. Thompson '57  
 Richard W. Thorpe '55  
 Theodore L. Thorsen '61  
 Lennert O. Thunberg '58  
 Stephen R. Towne '40  
 Lloyd M. Trefethen '40  
 Arthur H. Trotter 1901  
 Daniel Turoff '15  
 Jason P. Updegraph '01 (n)  
 Anthony A. Urbanelli '75

Edward S. Van Dusen '67  
 Peter Van Dyke '60  
 Roxie D. Vaughan  
 Paul G. Vibrans '71 (n)  
 Charles G. Visconti '55  
 Bob vom Saal '67  
 Peter K. Wallace '93  
 Homer N. and Katherine Wallin, Jr. PG'62  
 Edward B. Warchol '37  
 Charles A. Ward 1904  
 Lawrence W. Ward PG'51  
 Jennifer K. Waters '91, P'20  
 Thomas J. '89 Waters P'20  
 Abbott D. Weiss '63  
 Matthew R. '95, PG'97 and Tisha Werner  
 Thomas A. Wheaton '77  
 Sarah E. Wickenheiser '08  
 Vincent S. Wickenheiser '08  
 Robert M. Wilkinson '51  
 Allan N. Wilson '44B  
 Ann B. Wilson  
 W. Brett Wilson '75  
 Ethan T. Wiseman '11  
 Stefan T. Wolczko '09  
 Steven F. Wolgamot '69  
 Frank W. Wood '40  
 G. Gilbert Wyland '26

New member (n) - Honorary alumnus/a (Hon.) - Spouse of deceased alumnus/a (S) - Exchange student (E) - The names of deceased donors are *italicized*.





# WEBB SCHOLARSHIPS:

## *Making Progress by Getting Closer to 1967*

*by Anthony R. Zic, Director of Development*

Progress is seldom achieved by turning back the clock approximately fifty years. But when you consider that the Class of 1970 (see article on Page 15) was Webb's last class to enjoy "full scholarships" (inclusive of room and board expenses), most members of the Webb family would agree—turning back the clock in this context would be an amazing feat.

William H. Webb established and endowed Webb's Academy and Home for Shipbuilders in 1889, realizing his vision to provide all students with full financial support for the cost of attending college. Beginning in 1967, in order to preserve Webb's long-term financial well-being, the institution began charging students for room and board. As one can imagine, the student body wasn't thrilled with this change. Yet, since 2014, Webb has held an honorable distinction—we are the last private engineering college to provide full-tuition scholarships to every student.

"The New York City area has had a long tradition of offering a high quality of education, free of charge to students. For a long time, this was represented by the 'city colleges,' where you lived at home and commuted to school by subway or bus, just as my father and younger brother did to earn their degrees. For me, it was a lot better to live at Webb than it would have been to commute to school every day. So, I will continue to support Webb—a unique and wonderful concept for a college," said Ken Heitner '64.

In the 2017-18 Academic Year, costs of attending Webb exclusive of tuition totaled \$18,932. In the same year, 20% of Webb students demonstrated a financial need above and beyond what was covered by the full-tuition

scholarship, and a third of that need was not being met. The combination of rising non-tuition costs and unmet need put Webb at a disadvantage in recruiting and yielding top students who demonstrated financial need. In the summer of 2018, the Long Island-based Robert David Lion Gardiner Foundation awarded Webb a three-year grant totaling \$250,000, which when combined with Webb's existing room and board scholarships, enabled Webb to meet the full demonstrated financial need of all Webb students through Academic Year 2021-22. In doing so, Webb joined a short list of approximately 70 colleges who can make this important claim. Most importantly,



*The Honorable Peter Fox Cohalan in the Couch Academic Center, with Kathryn Curran, Executive Director of the Robert David Lion Gardiner Foundation*



for the duration of the grant, these combined scholarship funds are removing financial barriers to attending Webb.

“The Robert David Lion Gardiner Foundation partnered with Webb to re-establish the founder's original vision of full financial support of their students. The Foundation's award helps perpetuate Webb's academic excellence and provides enhanced access to diverse populations. The new academic facility Webb students will enjoy beginning with 2020 is a wonderful extension of Webb's tradition of maritime heritage and a brilliant interpretation of their historic site. This addition to their campus offers their students state-of-the-art technical facilities in a seamless architectural expansion. It is truly a model for other historic sites to emulate,” said Kathryn M. Curran, Executive Director of the Robert David Lion Gardiner Foundation.



*Marilyn and Art '54 Burr, who made the Arthur Burr '54 and Marilyn Burr tuition scholarships possible*



*Jane Loeser with Rudy Caligure '22 (left) and Cross Weeks '21 (right), both recipients of the Harrison Loeser Memorial Award*

Webb has made extraordinary strides through the generosity of the Webb family during the *Campaign for Webb* on many fronts, as detailed throughout this report. Our work is not done, and new challenges await Webb and Webb students. In academic Year 2019-20, Webb saw a 50% increase in students with demonstrated need, and the total demonstrated need of our student body nearly doubled. It is not possible to predict the future financial needs of Webb students. However, we are certain that we will need to add to the existing 34 Webb scholarships in order to ensure that Webb's 2019 Strategic Plan objective of meeting the demonstrated financial needs of each student is accomplished.

“Since my teenage years, I have been impressed by William Webb's generosity and his commitment to giving back. My family is deeply grateful to Webb's founder as his forward-thinking enabled my father, Harrison T. Loeser '43, and my brothers, Christopher Loeser '70 and Douglas Loeser '73 to receive full-tuition scholarships,” said Jane Loeser. “It is in that spirit that I have chosen to make a gift to Webb, which when coupled with my father's bequest, has formed the *Harrison Loeser Memorial Award*. This scholarship award fund helps sustain Webb students and encourages them to give to their greater community. For me, it is a gift that keeps on giving—a great return on my investment!”

We are grateful to each and every donor who has provided a gift to Webb's scholarship program. I hope that in the years to come, I can report back to say that we have turned back the clock to 1967. In doing so, Webb Institute would once again fully realize our founder's vision of an education free of financial burden.





# SCHOLARSHIPS & ENDOWMENTS

Webb Institute's unique financial model is predicated upon our ability to attract funds that support our students, faculty, and staff.

Webb is the only full-tuition scholarship private undergraduate program of its kind in the country, and it is critical that we sustain this model for students who are academically and personally prepared for the Webb challenge.

From the start, Webb has relied upon its endowment, initially through funds provided by William H. Webb,

and later through the generosity of alumni, family, and friends.

The concept is as relevant today as it was in 1889, when William H. Webb established the original endowment. Webb is also supported by a variety of non-endowed, restricted funds that enhance the Webb student experience through the arts, clubs, and much more.

We thank each and every member of the Webb family for your support!

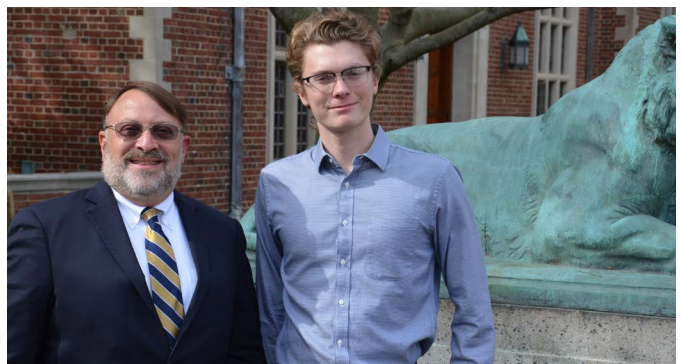
*by Anthony R. Zic, Director of Development*



*Shannon Liu '21, recipient of the Class of 1970 Scholarship, with Trustee David Bovet '70*



*Erin Postma '23, the recipient of The League Scholarship, with Trustee Wombi Rose '09*



*Calder Hartigan '22, recipient of the Damon Greenleaf Douglas III Memorial Scholarship Fund, with Chairman of the Board, Bruce Rosenblatt*



## **FUNDS SUPPORTING THE ARTS, RESEARCH, FACILITIES & LECTURES**

Arts & Antiquities Maintenance Fund  
Class of 1954 - Lenfest Challenge - W. H. Webb Gallery  
Class of 1968 - Lenfest Challenge - Faculty Research Lab  
Class of 1969 - Lenfest Challenge - Team Room  
Class of 1970 - Lenfest Challenge - Team Room & Scholarship Fund  
Class of 1973 - Lenfest Challenge - Conference Room  
Class of 1978 - 40th Reunion - Electronic Lathe  
Class of 1979 - Lenfest Challenge - Coffee Bar  
Class of 1988 - Security Gates  
Class of 1990 - Jetty Restoration  
Class of 1993 - 25th Reunion - Dean's Office  
Class of 1995 - Waterfront Upgrades  
Jill and Roger Compton '61, PG'64 Endowment for the Performing Arts  
Couch Academic Center Technology Fund  
The Richard B. Couch '33 Ship Design Computer Lab & Enhanced Classrooms Fund  
Graduation Award Fund  
The Carol and Jerrier Haddad (Hon.) Library Fund  
Jacques Hadler Faculty Conference Room - Lenfest Match (sponsored by Joe Mazurek (Hon.))  
Jacques B. Hadler (Hon.) Endowment for Research  
The Fountain Johnson Memorial Education Fund  
Marty Johnson '88 Leadership Fund  
Ron '63 & June Kiss Rooftop Terrace - Lenfest Challenge  
LaBerge Family Rooftop Terrace - Lenfest Challenge (sponsored by Jon J. '76 and Deborah W. LaBerge)  
Pierce J. McAuliffe Patio - Lenfest Challenge (sponsored by J. Cuneo '57)  
OTC Fund (sponsored by the TK Foundation/OCCF)  
Peggy's Garden - Lenfest Challenge  
Ruby Lounge - Lenfest Challenge  
Stone Family Team Room - Lenfest Match  
Student Garden Fund  
Student Sailboat Fund  
Student Thesis Fund  
Webb Landscaping Fund  
Webb Cultural Enrichment Fund  
Webb Mausoleum Conservation - Maintenance and Repair Fund  
Women Recruitment Fund  
Women Student Fund  
Dr. and Mrs. Alfred M. Zeien '52 Lecture Series  
Dr. and Mrs. Alfred M. Zeien '52 Infrastructure Fund

## **TUITION SCHOLARSHIPS**

American Bureau of Shipping Annual Scholarship  
Arthur Burr '54 Scholarship  
Marilyn Burr Scholarship  
Class of 1970 Scholarship Fund  
Philip Faurot '51 Scholarship  
Ken Heitner '64 and Rhoda Ritzenberg Scholarship Fund - in memory of Professor Otto J. Karst  
Ken Heitner '64 and Rhoda Ritzenberg Scholarship Fund - in honor of Professor Emeritus Thomas Bond '45  
Allen N. '36 and Cordella M. Hoyt Scholarship  
H. Smith McKann '38 Family Scholarship  
Robert G. Mende '51 Scholarship Fund  
Herman D. Pollock Family Foundation Scholarship  
Philip J. Sims '71 Memorial Scholarship  
Dr. and Mrs. Alfred M. Zeien '52 Student Scholar Endowment

## **COMMENCEMENT AWARDS**

Chaffee Memorial Prize (sponsored by Joseph J. Cuneo '57)  
J. Lewis Luckenbach Memorial Prize (sponsored by ABS)  
Lewis Nixon Memorial Prize (sponsored by John W. Russell '67)  
Patrick S. Matrascia Good Shipmate (sponsored by President R. Keith Michel '73)  
Stevenson Taylor Memorial Prize (sponsored by ABS)  
The Charles Kurz II (Hon.) Community Service Award  
Charles A. Ward Jr. Memorial Award  
Curran Memorial Prize (sponsored by John & Amy Malone '71)  
Keeler Memorial Prize (sponsored by Dr. Luther Tai)  
Paul E. Atkinson Memorial Prize in Ethics  
Richard A. Partanen Humanities Award (sponsored by Dean Matthew & Tisha Werner '95, PG'97)  
SeaRiver Maritime Award for Excellence in Engineering Design

## **ROOM AND BOARD SCHOLARSHIPS**

Class of 1956 Scholarship Fund  
Frederic R. Coudert Foundation Scholarship  
Thomas B. Crowley Sr. Memorial Scholarship Fund  
R. Peaslee DuMont '32 Scholarship Fund  
Fisher Maritime/Dunderberg Scholarship Fund  
Robert David Lion Gardiner Foundation Scholarships  
Glosten Scholars Program  
Damon Greenleaf Douglas III Memorial Scholarship Fund  
John J. Hopkinson Memorial Scholarship  
Kurz Family Scholarship  
Jonathan Lance '80 Scholarship Fund  
Leadership Scholarship Fund  
The League Scholarship  
Harrison Loeser '43 Memorial Award  
McMullen Family Student Aid Fund  
Peggy Michel Memorial Scholarship  
John and Amy Malone Scholarship '71  
Matson Foundation Scholarship Fund  
Joseph Mazurek Scholarship Fund  
Olsen Family Scholarship Fund  
Charles J. "Corky" Sautkulis '72 Scholarship Fund  
Cpt. Joseph H. Thornton '43 Memorial Scholarship  
John F. Towle Scholarship

## **ENDOWED AND NAMED CHAIR & PROFESSORSHIPS**

American Bureau of Shipping Chair in Naval Architecture and Marine Engineering  
James J. Henry '35 Professorship of Naval Architecture  
John J. McMullen (Hon.) Professorship of Humanities  
Mandell and Lester Rosenblatt (Hon.) Professorship of Marine Engineering  
Shirley N. and Stephen B. Towne '40 Professorship of Ship Design





## 2018-2019 DONATIONS

## GIFTS IN HONOR OF, IN MEMORY OF, AND WAA DONATIONS IN MEMORY OF

### GIFTS IN HONOR OF:

**David M. Bovet '70**  
Ray Bovet

**John C. Couch's Birthday**  
Dorelle Ackermann

**Susan and Chris Lake '99**  
John and Judith Edinger, P'99

**Juliet Lehman '22**  
Lauren Egna

**Blake T. Loncharich '19**  
Paul Loncharich, GP'19

**Brent J. Morrison '11**  
Ken and Jennifer Morrison, P'11

**Ian Mutnick '96**  
Mr. and Mrs. Victor Mutnick, P'96

**Roy Neyman '77**  
David A. Helgeson '77

**Wombi S. Rose '09**  
Harold Grinspoon Charitable Foundation

**Daniel Roske '19**  
Lana Roske, GP'19

**Eugene Schorsch '52**  
Gary Bornstein

**Dr. Michelle Stein**  
Alexander N. Dzinbal '17

**Midori Thiel**  
Brent J. Morrison '11

### GIFTS IN MEMORY OF:

**Paul E. Atkinson '42**  
Mary A. Hafner

**Priscilla Diehl**  
Peter A. Johnson '56

**R. Peaslee DuMont '32**  
Edward C. DuMont

**Edwin L. Dunbaugh**  
Jim McMahon '85

**Alan G. Forssell '53 &  
Alfred G. Forssell**  
Betty Rose Forssell

**Dorothy and Bruce Johnson**  
Brent J. Morrison '11

**Jens Holme**  
James N. Greenlees '72

**Robert C. Kehl, P'91, GP'20**  
AM Mechanical Technicians Group  
David Farrell  
Sarah Mouring  
James J. Shaughnessy '89

**Ronald K. Kiss '63**  
John Applegate  
G. William Birkhead '63  
Arthur Carlson  
June Kiss '63S (Hon.)  
Eugene R. Miller, Jr. '64, P'96  
J. William Smith '63  
Martin Unfried

**James A. Lisnyk '63**  
G. William Birkhead '63  
Bridget F. Lisnyk-Washlack '63S (Hon.)

**Harrison Loeser '43**  
Jane Loeser

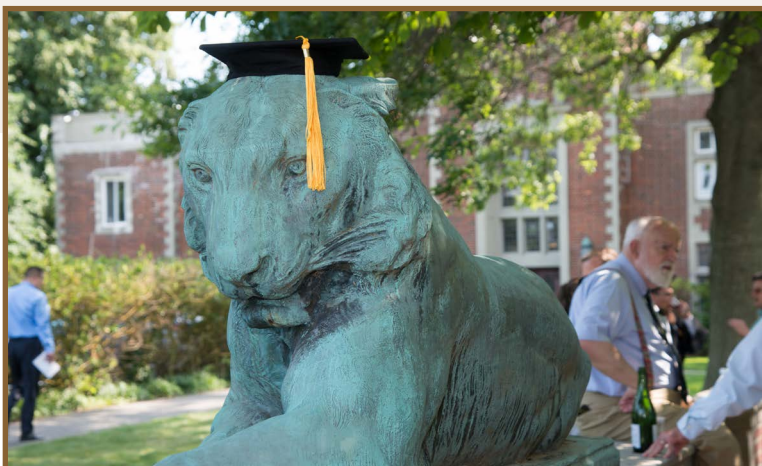
**Robert G. Mende '51**  
Lisa Senu

**Patrick Matrascia**  
Brent J. Morrison '11

**Peggy Michel**  
Karen L. Albanese  
Jerry and Carol Aspland  
Anthony F. Attanasio '82  
Cynthia Barber  
Roderick A. Barr '60  
Nicholas D. Barron  
Gary and Phyllis Becker, GP'21  
Suzanne Beckstoffer  
Cheryl Bennett  
Carol and Paul Bentel  
Victor W. Bethge '53, GP'05  
Thomas H. Bond '45  
Stephen R. Breit '79  
Ron and Susan Briggs  
RADM Jack Buono  
Arthur and Marilyn Burr '54  
June Caligore P'22  
Joedy W. Cambridge  
Taylor Campbell '19  
Lauren Carballo  
James and Jean Card  
Joseph Cascio  
Richard C. Celotto '73  
Roderick Mackinnon and Jue Chen  
Ada Cheung  
Max and Laura Choi  
Thomas B. Cole '60  
Matthew D. Collette '99  
Joe Comer  
Commission on Independent  
Colleges & Universities  
Edward Comstock  
Seth D. Cooley '10  
Ashley Dias '19  
Babara Allen Diaz  
Victoria Dlugokecki '88  
Daniel Dooley  
Edward C. DuMont  
Mara M. DuVernois '20  
James R. Dwyer '72  
John L.R. Edgar III, '87 and Alicia H. Edgar  
Chris and Tola Eley  
Richard and Marylou Ferrieri, P'11  
Connie Frost  
Geoffrey D. Fuller '72  
John and Linda Gagliardi, P'18  
George A. Gilmore '57  
Robert D. Goldbach '58  
Bradley D. Golden '99  
Elizabeth Gong  
Martha Grabowski  
Alison and Hal Granger, P'14 (Hon.)

Gregory M. Griffin '77  
Kim Hall  
Patricia Harrigan  
Richard C. Harris  
Peggy Harris  
William R. Harris '18  
Paul W. Hayes '54  
Alexandra K. Heitman '19  
Taylor M. Herinckx '06  
William and Donna Hill, P'19  
Isabel J. Hill '20  
Russell H. Hoffman '74  
Erin Hub '16  
Mark Hutchins  
Joshua Jespersen  
Ralph E. Johnson '68  
Peter A. Johnson '56  
Seth Jones '19  
Jackson W. Juska '21  
Pamela Kan-Rice  
James Kelly '19  
Geraldine Knatz  
Helen Kolsky  
Paul and Kit Kung  
Charles Kurz II (Hon.)  
Jon J. '76 and Deborah W. LaBerge  
Harry and Elizabeth Lachtman, P'11  
Henry Laible  
Stephen J. Lardie '73  
Ms. Elisa Leberis  
Benjamin Lee '19  
Holly Lemoine  
Eric and Pat Linsner '70  
Blake Loncharich '19  
Walter M. Maclean  
Robert and Cindi Maguire, P'21  
John A. Malone '71  
Naresh M. Maniar  
Linda Manton  
Thomas N. Manuel '54  
Henry S. Marcus '65  
Mariano's Cleaning Service, Inc.  
Michael Martin  
Cherie McDougald  
Mary E. McGuinness '20  
Joshua S. McMinn '09  
Ying Mei  
Greggory B. Mendenhall  
Joshua Michel and Beth Pysz  
R. Keith Michel '73  
Peter Miller  
Eugene R. Miller, Jr. '64, P'96  
Molloy College  
James R. Moody '82  
George and Tatiana  
Mouravieff, P'09, P'11, P'16  
Steven and Cathryn Nation  
Richard P. Neilson '70  
Melissa Newkirk  
Alison Ng and Lilian Hsu, P'20  
Josiah Ng '19  
Adrian S. Onas  
David R. Pedrick '70  
Patricia Pfluger, GP'17  
Craig Philip  
John and Marybeth Pysz  
Dominique and Holly Ratinaud, P'18  
David R. Rodger '63  
Gilbert Romano  
Wombi Rose '09  
Daniel Rosenblatt  
Robert Rosenblatt  
Bruce S. Rosenblatt (Hon.)  
Daniel Roske '19  
Jonathan A. Roussin '17

New member (n) - Honorary alumnus/a (Hon.) - Spouse of deceased alumnus/a (S) - Exchange student (E) - The names of deceased donors are *italicized*.



Richard A. Royce  
John and Aimee Ryan  
Spencer A. Schilling, Jr. '82  
Ellen G. Schorsch '58S, GP'19  
Eugene Schorsch '52  
Benjamin Scott and Patricia Shustock, P'10  
Joern Ilja and Silke Siepmann, P'17  
Monique Sinmao '93  
Ted A. Slotwinski '73  
Richard A. Smith '76  
Joseph and Julie Soja, P'13  
Michael Soupios  
John and Kimberly Strassner  
Sarah Stretch '19  
Gailmarie Sujecki (Hon.)  
Jeffrey and Andrea Taber, P'20  
Kay Harrison Taber  
Luther Tai  
Abishai Thomas '19  
Richard W. Thorpe '55  
Dr. Kirsi K. Tikka  
Easton Tilicki '19  
Michael W. Toner  
Saveria Tornicchio  
Martin and Dorine Toyen  
Cindy Trueman  
Charles G. Visconti '55  
Bob vom Saal '67  
Rachel Walker '14  
Mr. and Mrs. Homer N. Wallin, Jr. PG'62  
Lawrence W. Ward PG'51  
Muriel Weathers '19  
Peter F. Weber '74  
Matthew R. Werner '95, PG'97  
Edwin G. Wiggins (Hon.)  
Peter Wiley '19  
Richard Willdig  
W. Brett Wilson '75  
Jocelyn Wilson (Hon.)  
Anthony Zic  
Peter F. Zink '72

Anonymous (3)

**Jim Morrison**  
Brent J. Morrison '11  
Ken Morrison  
Gailmarie Sujecki (Hon.)

**Richard A. Mulford '61**  
Roger H. Compton '61, PG'64  
Ann Mulford  
John A. Graap, Jr. '61

**Richard A. Partanen**  
Jane N. Partanen, P'87  
Brent J. Morrison '11

**Cedric Ridgely-Nevitt**  
James N. Greenlees '72

**John K. Roper '53**  
Robert B. Hedges '53  
Victor W. Bethge '53, GP'05

**Thomas J. Sartor, Jr., '54**  
Dale Sartor  
Thomas D. Sartor

**Charles J. "Corky" Sautkulis '72**  
James N. Greenlees '72

**Daniel Schorsch '58, Ruth Schorsch and Ruby Schorsch**  
Gary A. Bornstein  
Fred and Barbara Bornstein  
Emily and Eitan Danon  
Charles Garland '58  
Arthur L. and Vida F. Goldstein  
Toni Kboudi  
Rebecca Lynn  
Alvin Marks, Jr.  
Timothy Mooradd

Harley and Sara Rotbart  
Matthew Rotbart  
Ellen G. Schorsch '58S, GP'19  
Eugene Schorsch '52  
Ronald Schorsch and Bernd Hilbert  
Geoffrey Uttmark, P'23  
William and Laurie Schorsch Webber  
James R. Webber  
Diane Wunnicke  
Jean G. Zeien

**John C. Taylor '72**  
James N. Greenlees '72

**Thomas S. Taylor '53**  
Victor W. Bethge '53, GP'05

**Joseph M. Verdon '63**  
Margaret R. Verdon '63S

**Alfred M. and Joyce Zeien '52**  
Eugene '52 and Ruth Schorsch

### WEBB ALUMNI ASSOCIATION GIFTS IN MEMORY OF:

Wayne H. Christensen, Jr. '61  
William T. Gurnee PG'68  
William J. Hooker '53  
Edmund T. Klemmer '44B  
Richard A. Mulford '61  
George B. Patterson '57  
George A. Petersen '51  
John K. Roper '53  
Edward W. Ross '45  
Thomas S. Taylor '53  
Robert C. Umberger PG'59  
Alfred M. Zeien '52

New member (n) - Honorary alumnus/a (Hon.) - Spouse of deceased alumnus/a (S) - Exchange student (E) - The names of deceased donors are *italicized*.



## 2018-2019 DONATIONS

# WEBB EVERY YEAR *(WebbEY) PROGRAM*

The Webb Every Year Program (WebbEY) was established during the 2006-2007 Annual Fund. Initially, this program was created to acknowledge alumni donors for their consecutive years of giving. Eventually, it was extended to include other members within our community, and it now recognizes family and friends. The WebbEY program was created strictly to recognize our donors' consistency of support, regardless of gift amount.

In order to attain the status of becoming a WebbEY, a donor has to contribute to the Annual Fund for a minimum of five consecutive years. To show appreciation to our consecutive giving donors, Webb Institute now mails a pin to those in the five, 25, and 50-year consecutive giving categories.

Consecutive giving allows Webb to plan for the future with assurance and to continue to be recognized as the premier college of naval architecture and marine engineering. We wish to thank the following contributors for their loyalty and generosity and for attaining the distinct honor of achieving WebbEY status this year.

*The list below constitutes only the newest WebbEY members in each category.  
For a full list of WebbEY members, please go to [www.webb.edu/webb-every-year-program](http://www.webb.edu/webb-every-year-program)*

### 50 YEARS

Thomas P. Mastronarde '69  
Paul G. Snyder '69  
Steven F. Wolgamot '69

### 25 YEARS

Thomas W. Chadwick '72  
Joseph J. Kelleher '84  
Gregory M. Matzat '89  
Bill R. McEachen '84  
Mr. and Mrs. Victor Mutnick, P'96  
George H. Plude '54X  
John W. Russell '67  
Christine Schleicher '89  
Anthony A. Urbanelli '75  
Daniel W. Yannitell '62  
Gary R. Zane '77

### 20 YEARS

Roderick A. Barr '60  
Yongjun Chen PG'99  
Matthew D. Collette '99  
Grant B. Dugan '81  
John G. Harrison '70  
Theresa Haven '92  
Michael J. Hughes '88  
Russell E. Kupferer '99  
Marc T. Limeri '77  
Robert McGowan '62  
Jane N. Partanen, P'87  
Jennifer R. Ryan '99  
David M. Shepard '85  
J. Niel Spillane '50  
Oren L. Stephans '59  
Matthew P. Tedesco '91  
John D. Van Buskirk '76  
Edward S. Van Dusen '67  
Phillip J. Wagner '78  
Thomas J. Waters '89, P'20

### 15 YEARS

Thomas and Susan Burns, P'08  
Matthew R. Fox '04  
Ryan E. Hackel '04  
Christopher M. Lake '96  
Susan E. Lake '99  
Katharine A. C. Munkenbeck '04  
Joel R. Parry '79  
Daniel and Beth Reifsnnyder, P'08  
Scott Richards '77  
Matthew L. Unger '04  
Timothy Yen '04

### 10 YEARS

William and Nancy Bartling, P'13  
Ray and Diana Boltz, P'12  
Michael Bushnell '69  
Michael E. Cariello '10  
Thomas B. Cole '60  
David H. Collins '73  
Drs. Theresa and Roland De Marco, P'13  
Lowell and Christine Dickerson '10  
Jacob M. Genauer '10  
Robert D. Goldbach '58  
C. Kent Greenwald '80  
David M. Gross '10  
George Gross, P'10  
Daniel R. Healy '87, P'21  
Halsey C. Herreshoff '55  
Glenn Howard, Jr.  
Stephen J. Lardie '73  
Peter S. C. Lee '10  
Christopher H. Lyons '10  
William J. Markuske '10  
Joseph D. Mott, Jr. '75  
Amanda M. Malarkey-Nair '10  
John D. Nonemaker II '10  
Andrew J. Nowakowski '10  
George L. Petrie '70  
Douglas A. Read '97  
Tedi R. Rybovich '10  
Alexander L. Scott '10  
Douglas L. Slocum '10

Joseph and Julie Soja, P'13  
George and Nancy Stebe, P'08  
Richard L. Storch '67  
Gailmarie Sujecki (Hon.)  
John J. Sullivan IV '01  
Christopher Swanton '98  
Thomas P. Tindale '10  
Matthew R. Werner '95, PG'97  
Simmy D. Willemann '10  
Scott G. Withee '72

### 5 YEARS

Scott D. Black '90  
Michael Chen '15  
Lou and Dorene Comisso, P'18  
Nolan Conway '15  
Satchel Douglas '15  
Robert and Diane Dvorak, P'07  
Dale Froriep, P'16  
Gabelli Foundation/Jewish Communal Fund  
John and Linda Gagliardi, P'18  
Bill and Lisa Geschwilm, P'18  
Matthew Gianforcaro '15  
Robert F. and Sandra Gill III, P'02  
Alexander Hanford '15  
Christopher and Maricar Harris, P'19, P'22  
Stefan Kuczera '15 and Erin M. McElroy '15  
Christopher Licato '15  
Douglas J. Loeser '73  
David and Cynthia Minnich, P'08  
William F. Nugent '90  
Cody C. Owen '15  
Alexandra L. Pitti '15  
Gabriel Poritz '15  
Benjamin Rockwell '15  
Joshua W. Rothman '10  
Andrew Thompson '15  
Steven W. Torok '97  
Kirk E. Torstenson '93  
Tyler Totten '15  
Daniel Turoff '15  
Matthew Weklar '15  
Evan Wingfield '15  
Wesley Yland '15

New member (n) - Honorary alumnus/a (Hon.) - Spouse of deceased alumnus/a (S) - Exchange student (E) - The names of deceased donors are *italicized*.



## WEBB FAMILIES TAKE IT UP A NOTCH

**Jennifer '91 & Tom '89 Waters, P'20**  
CO-CHAIRS OF THE WEBB PARENTS ANNUAL FUND



Just when we thought the Webb Parent Annual Fund had an amazing year—and by all measures the 2017-2018 fund year was amazing—the families of Webb’s students have once again “taken it up a notch.” With a 2018-2019 Parent Annual Fund participation rate of 77% (up from 71%) and a total of \$183,979 raised (up from \$144,690), the students’ families have once again demonstrated that the vision and spirit of William H. Webb is not only alive and well but is incredibly strong!

This spirit of giving in the Parent Annual Fund is nowhere as evident as it is with the parents who make up the Parent Annual Fund Committee. In addition to making their own monetary contributions to the Parent Annual Fund, these committee members—none of whom are professional fundraisers and all of whom are trying to balance busy lives—have graciously donated their time and volunteered for something that is new to them and often initially outside their comfort zones. We feel so blessed and honored to be working with such giving and dedicated volunteers.

As great as the support of families and grandparents has been, our work is not done. With 11 parent volunteers returning from last year and five new members from the class of 2023, we are excited to once again connect with other parents, and we are optimistic that “we can take it up yet another notch.”

**2018-19**

### PARENT FUND COMMITTEE

Jen '91 & Tom '89 Waters, P'20 (Co-Chairs)

Jeanine and Paul Becker, P'21, P'22

Maricar and Chris Harris, P'19, P'22

Meredith and Eric Johansson, P'21

Maria and Dennis Kiely, P'22

Linda and Kirk Lehman P'22

Karen Luparello & David Gossage, P'22

Bonny and Robert Oliver, P'22

Aimee and John Ryan, P'22

Erika and Robert Schmitz, P'22

Andrea and Jeff Taber, P'20

Susan and Frank Weeks, P'21

## 2018-19 PARENT FUND RESULTS

Class	2021	2020	2019	2018	Class Total	Grandparents	OVERALL
Total Gifts	\$30,775	\$27,725	\$39,940	\$28,369	\$126,809	\$57,170	\$183,979
Average Gift	\$1,539	\$1,459	\$1,997	\$1,576	\$1,647	\$1,786	N/A
% Participation by Family	77%	70%	80%	82%	77%	N/A	





**Jon J. LaBerge '76**

VICE CHAIRMAN,  
BOARD OF TRUSTEES  
CHAIRMAN,  
FINANCE COMMITTEE

# FINANCE & INVESTMENTS FY2019

In the final year of the historic six-year, \$51.6 million *Campaign for Webb*, revenues of \$9.3 million were realized against expenses of \$7.3 million. While the corresponding \$2.0 million surplus is substantially less when compared to the prior years of the Campaign, it demonstrates the continuing support of alumni and friends of Webb and the administration's efforts to control cost.

The Statement of Activities shown in Table 1 is as reported in our audited financial statements and is developed in accordance with Generally Accepted Accounting Principles (GAAP). Total Expenses of \$7.3 million include non-cash items like depreciation expense for fixed assets and bad debt expense (write-

downs of uncollectable pledges), but do not include cash expenditures for capital improvements.

As in previous years, Instruction (faculty, laboratories, etc.), Academic Support (non-faculty academics, library, etc.), Student Services (student activities, admissions, financial aid, etc.), and Auxiliary Enterprises (primarily food service) account for over two-thirds of total expenses.

Table 2 shows Webb's balance sheet with Investments and Fixed Assets broken out to show the Investments reserved for these major capital projects and the cumulative amounts capitalized on those projects as of June 30, 2019.

**TABLE 1: STATEMENT OF ACTIVITIES (INCOME STATEMENT)**

Revenue and Support	FY2019	FY2018	FY2017
Net Room & Board and Other Fees	1,430,166	1,408,933	1,286,671
Private Gifts and Grants	4,869,381	11,539,466	5,073,350
Miscellaneous Income	202,083	133,653	165,116
<b>Total Operating Revenues and Support</b>	<b>6,501,630</b>	<b>13,081,673</b>	<b>6,525,137</b>
Investment Return	2,778,250	4,087,406	7,367,479
<b>TOTAL REVENUES AND SUPPORT</b>	<b>9,279,880</b>	<b>17,169,079</b>	<b>13,892,616</b>
<b>Expenses</b>			
Instruction	2,573,411	2,554,248	2,475,882
Institutional Support	2,248,499	2,160,813	2,182,112
Auxiliary Enterprises	1,059,307	1,015,476	993,091
Student Services	747,092	718,059	668,469
Academic Support	696,628	734,574	771,300
<b>TOTAL EXPENSES</b>	<b>7,324,937</b>	<b>7,183,170</b>	<b>7,090,854</b>
<b>Change in Net Assets</b>	<b>1,954,943</b>	<b>9,985,909</b>	<b>6,801,762</b>

Webb continues to maintain a strong balance sheet with little debt and nearly all of its investments held in liquid securities. The most significant balance sheet change year to year is the deployment of "Investments Reserved for Construction Projects" to "Construction Projects," mostly associated with the new Couch Academic Center (CAC). In addition to the CAC, Webb is currently engaged in a number of other major projects, including upgrades to the computer network to improve its resilience and performance, new water mains and fire hydrants throughout campus, a fire sprinkler system throughout Stevenson Taylor Hall (STH), a new sanitary system for STH and CAC, renovation of dormitory bathrooms in STH (which were last renovated in 1947!), and repurposing of the current classrooms into additional dormitory rooms.

The total cost for the Couch Academic Center including furnishings and other soft costs is projected at \$15.5 million. The repurposing of STH classrooms to



**TABLE 2: STATEMENT OF FINANCIAL POSITION  
(BALANCE SHEET)**

	<b>FY2019</b>	<b>FY2018</b>	<b>FY2017</b>
Investments Reserved for Construction Projects	2,415,998	9,617,280	8,731,741
Other Investments	66,218,762	66,117,986	57,577,232
Construction Projects in Progress	11,829,316	880,225	203,560
Other Fixed Assets, Net of Depreciation	8,095,774	7,856,240	8,201,307
Contributions Receivables	2,077,943	2,790,543	2,021,561
Other Assets	1,639,688	1,113,649	1,474,411
<b>TOTAL ASSETS</b>	<b>92,277,481</b>	<b>88,375,923</b>	<b>78,209,842</b>
Payables and Other Liabilities	2,367,035	736,162	555,990
Loans, Long Term	315,742	-	-
<b>TOTAL LIABILITIES</b>	<b>2,682,777</b>	<b>736,162</b>	<b>555,990</b>
Without Donor Restrictions	72,666,304	67,830,094	60,103,758
With Donor Restrictions	16,928,400	19,809,667	17,550,094
<b>TOTAL NET ASSETS</b>	<b>89,594,704</b>	<b>87,639,761</b>	<b>77,653,852</b>
<b>TOTAL LIABILITIES &amp; NET ASSETS</b>	<b>92,277,481</b>	<b>88,375,923</b>	<b>78,209,842</b>

dormitories and other campus-wide projects will cost an additional \$5.5 million. These costs will exceed the assets currently reserved for these projects. Webb anticipates financing the balance of the construction and renovation costs. We anticipate borrowing approximately \$8.1 million.

At this time, we have access to financing at very favorable rates collateralized by specific investments in our endowment portfolio. Webb will establish a repayment schedule and will consider accelerating that schedule as

Campaign pledges, the majority of which are in the form of bequests, are received over the coming years.

As of June 30, 2019, the endowment value including restricted and unrestricted investments, but excluding the funds committed to the major capital projects, was \$66.2 million. This compares to an endowment value of \$52.1 million as of June 30, 2013, marking the start of the six-year Campaign. Overall, our investment return for the year was 4.2% vs. a target nominal return of 6.2% (inflation index of 1.7% plus a target real return of 4.5%). Our performance over the past 10 years ranks us in the top 10% within a universe of colleges and universities tracked by Cambridge Associates, our investment advisor.

Webb's Investment Policy Statement calls for a diversified asset allocation. The asset classes and target allocations are as follows: Global Equity (58%), Diversifiers (20%), Real Assets (10%), Fixed Income (10%), and Cash (2%). The policy does, however, provide for some flexibility in asset allocation to allow for tactical decisions by the Investment Committee. Webb's asset allocations are currently close to our target asset allocation in all asset classes.

The growth in our endowment and the investment in infrastructure, including the Couch Academic Center and other campus upgrades, are strategic investments in Webb's future. The commitment demonstrated by the Webb community in supporting the Campaign has made this possible. Webb is now on firm financial footing although further growth of the endowment is needed to ensure long-term financial sustainability. Your continued support will help ensure financial viability for future generations of Webb students.



## 2018-2019 DONATIONS

# MATCHING GIFT ORGANIZATIONS

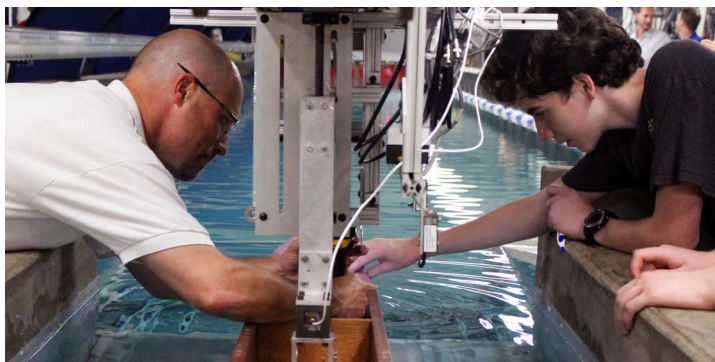
We are grateful to the organizations that so generously match the contributions of Webb donors, and to the Webb family for taking the steps necessary to maximize the impact of their contributions through matching gifts.

Such gifts accounted for **approximately 10% of Annual giving in 2018-19**, so please be sure to check with **your employer** to find out whether your contribution is eligible for a matching contribution.

**Every gift counts!** *If you have questions, please call our Development Office at 516-759-2040.*

AbbVie  
Altria Matching Gift Company  
Amazon Smile Foundation  
Amgen Foundation  
Apple Matching Gifts Program  
BAE Systems  
Bank of America Foundation  
BNY Mellon Community Partnership  
Boeing Matching Gift Program  
Caterpillar Foundation  
Chevron Humankind Employee Funds  
Crowley Cares Foundation Matching Gift Program  
Deutsche Bank Americas Foundation  
Excelerate Energy  
ExxonMobil Foundation  
General Dynamics NASSCO

General Electric Corporation  
The Glostien Associates, Inc.  
Guardian Life Insurance Company of America  
IDEX Corporation Matching Gift Program  
Illinois Tool Works Foundation  
J.P. Morgan Chase  
Josiah Macy Jr. Foundation  
Leidos Matching Gift Program  
Metal Shark Aluminum Boats  
Quantum Marine Engineering  
Raytheon Systems Company/Matching Gifts  
Salesforce  
Starr Companies Matching Gift Program  
Wakefern Food Corporation  
Wells Fargo Educational Matching Gift Program  
White Mountains Advisors LLC





**George Mouravieff**  
P'09, P'11, P'16

## COMMITMENT AND GRATITUDE TO THE WEBB FAMILY

Commitment is the overwhelmingly positive feeling that comes to mind when I think about the Webb Family. It is a common thread to all students, parents, alumni, and friends of Webb that resonates warmly throughout the many facets of our close-knit institution. The Webb experience would not be as uplifting and heartfelt if it were not for the community of people committed to Webb Institute and all that it represents.

The support that everyone extends in so many different ways is not a coincidence, but evidence of a dedication that can only come from within. We are all donors and recipients alike in this pool of mutual interest. It is difficult not to have feelings of pride when we recognize the benefit the recipients receive because of our commitment, regardless whether it's through our emotional or monetary support. Many of us are very fortunate to have family members who graduated from Webb, thanks to the commitment of William H. Webb and countless others. Personally, I am humbled and so grateful for the opportunities our family has experienced.

The dedication of the entire Webb Family makes it possible for the institution to continue to uphold its highest standards, which are clearly second to none. The Couch Academic Center exemplifies the commitment of so many, notwithstanding the Couch Family's generosity, true friends that Webb is blessed to have. The continued support from Webb leadership and commitment of so many help ensure a bright future for the coming years. Thank you to all for your respective contributions.



## A WEBB FAMILY TRADITION

Continuing a tradition started in September 2015, President Michel '73 graciously hosted a breakfast for parents of alumni during Family Weekend 2018. This event underscores Webb's continued dedication to the Webb family, embracing parents of alumni after their children graduate.

After Sunday's breakfast we enjoyed a modern Webb classic, the Freshman Boat Competition, where parents of alumni found ourselves enjoying wonderful memories. Members of the Committee encourage parents of alumni to partake in this unique opportunity in future years. It is an enjoyable way to stay connected to Webb well beyond our student's graduation.

Being involved as a parent of an alumnus has proven a fulfilling way to recognize the incredible personal and professional opportunities our son has enjoyed. Families of 134 alumni contributed \$146,860 in 2018-2019. In this past year, four new parents of alumni families gave to Webb for the fifth consecutive year and earned WebbEY (Webb Every Year) status! A hearty "THANK YOU" from Webb for everyone's enthusiastic support. We hope to see you back on campus soon!



**Hal Granger P'14 (Hon.)**  
CHAIRPERSON

**PARENT OF ALUMNI FUND COMMITTEE**

Hal Granger P'14 (Hon.), Chairperson  
Katherine H. Dixon P'11  
Marylou & Rich Ferrieri P'11  
Steve & Marian Guglielmoni P'12  
Tatiana & George Mouravieff P'09  
P'11 P'16  
Paul & Linda Neureuter P'14  
Karen & David Przelomski P'16





**Webb Institute**  
298 Crescent Beach Road  
Glen Cove, NY 11542-1398  
[www.webb.edu](http://www.webb.edu)

# Webb Institute: *2018-19 Annual Report*

