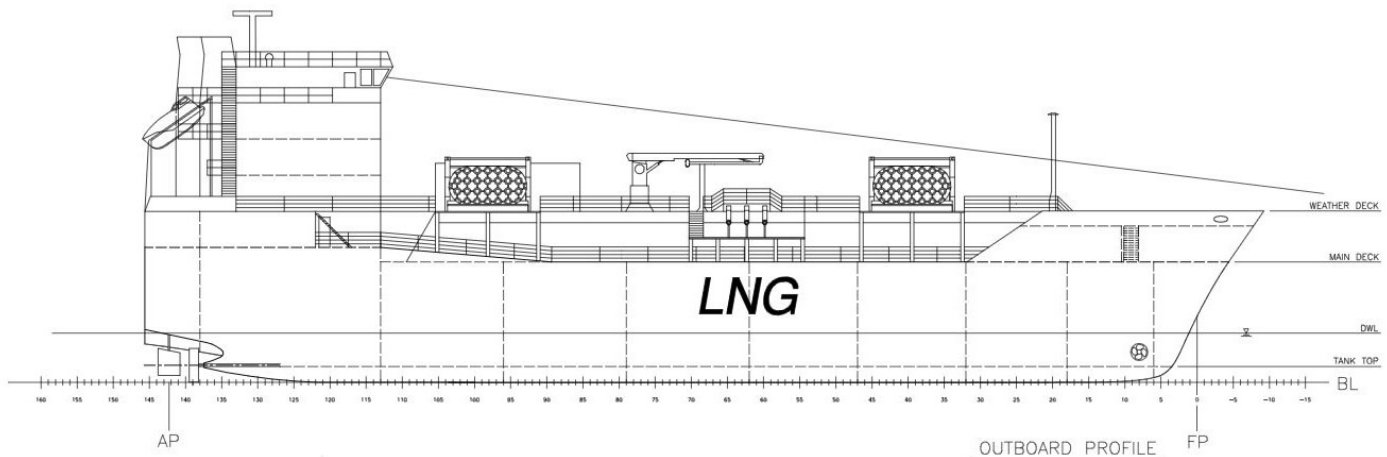




4,200 M³ LNG Bunkering Vessel

Mission:

The mission of this concept design is to bunker two cruise ships, operating out of San Juan, PR and Miami, FL. Cargo will be loaded at the JAX LNG Terminal in Jacksonville, FL. Two identical bunkering vessels will service the route on a staggered rotation, ensuring each cruise ship receives 1500cuM of LNG each week.



Principal Characteristics

- 95 m LOA
- 20 m Beam
- 10 m Depth
- 4.1 m Draft
- 2687 MT Lightship Displacement
- 5050 MT Full Load Displacement
- 14 knot Service Speed
- 16 knot Maximum Speed
- Complement: 15

Cargo Containment

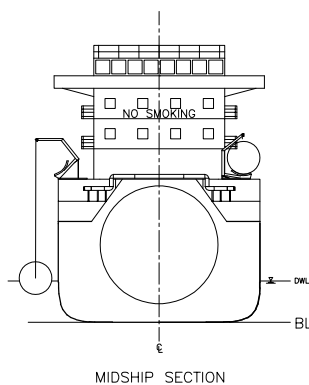
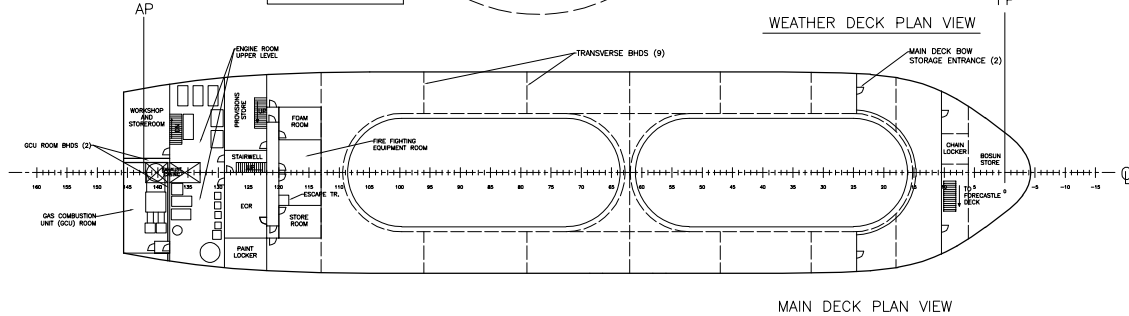
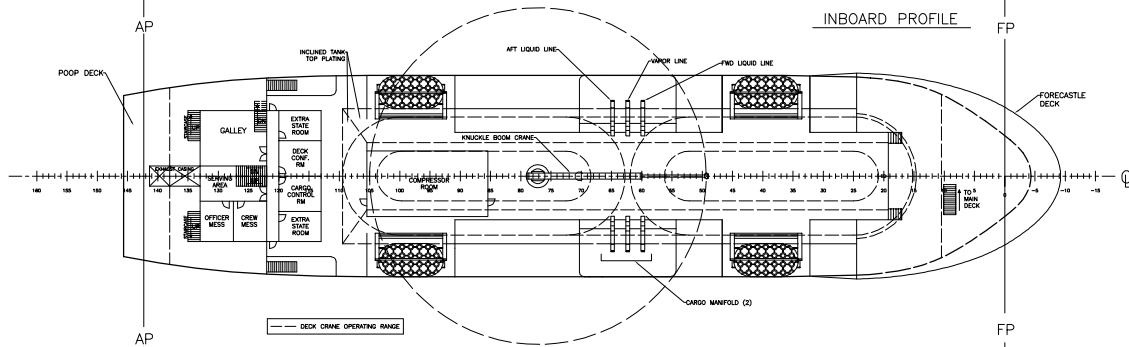
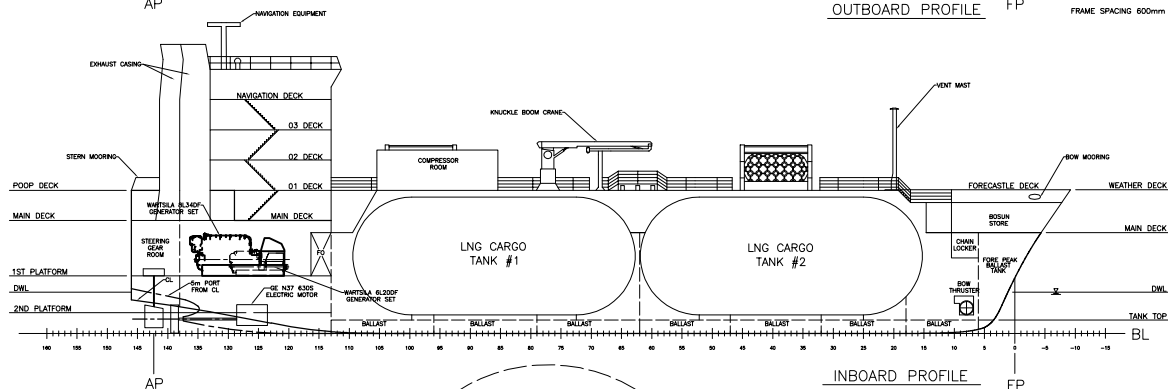
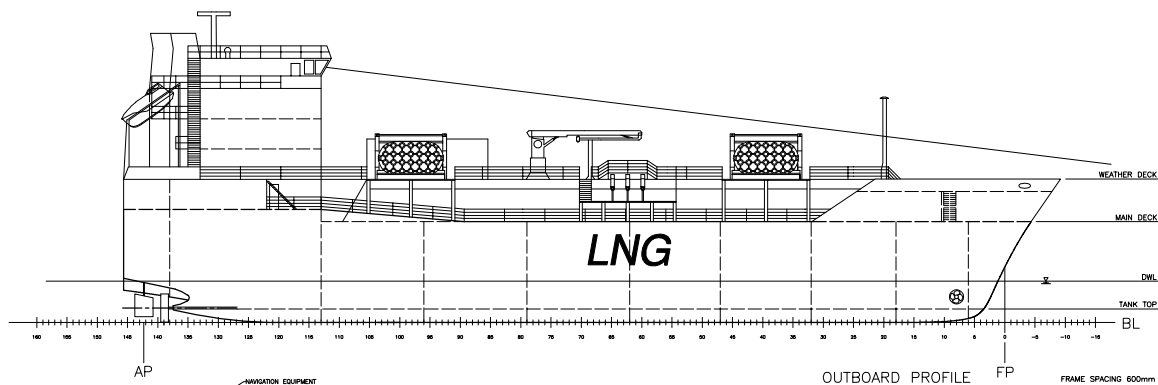
- 2x 2200m³ Cylindrical Type C Tanks

Propulsion and Machinery

- Dual Fuel Diesel Electric System
- Generator Sets
 - 2x 3490kW Wartsila 8L34DF
 - 2x 1065kW Wartsila 6L20DF
- 1x 614kW Wartsila 125H Bow Thruster
- Twin Screw Propellers

Notable Features

- Port and starboard bunker manifolds
- 16m knuckle-boom crane for handing LNG hoses
- Four pneumatic fenders with hydraulic davits for Ship-To-Ship (STS) transfer operations
- Gas Combustion Unit (GCU) for boil-off gas (BOG) management
- LNG sub-cooler to minimize BOG production during transfer operations



PRINCIPAL CHARACTERISTICS

LENGTH OVERALL	92.9m
LBP	85.4m
BEAM	20.0m
DESIGN DRAFT	4.1m
DEPTH	10.0m
SERVICE SPEED	14.0kts
CARGO CAPACITY	4200M3
FRAME SPACING	0.600m

LNG BUNKERING SOLUTIONS

NAVAL ARCHITECTS
MARINE ENGINEERS



298 CRESCENT BEACH RD
GLEN COVE, NY 11542

4200M3 LNG
BUNKERING VESSEL

GENERAL ARRANGEMENT

SCALE: 1:750

DWG NO. 1 OF 1



ALEC BIDWELL

(Pelham, NY)



Hobbies: Avid wing shooter and fisherman.

Experience: Analytics Intern at Excelerate Energy. Cadet onboard the AHT Resolve Monarch. Composites intern at New England Boatworks.

Project Contributions: LNG Systems and Operations Lead.

Career Plans: Oil and Gas, Energy Industry.

OSCAR COMO

(Cold Spring Harbor, NY)



Hobbies: Avid Powerboater and Tennis Player.

Experience: Hydrodynamics Intern at Mercury Marine. Naval Architect Intern at Gilbert & Assoc., Cadet onboard the AHT Resolve Monarch. Composites intern at New England Boatworks.

Project Contributions: General Arrangement Lead and Lines Plan Lead.

Career Plans: Small Craft, Recreational Industry.

LUKE HERBERMANN

(Wakefield, RI)



Hobbies: Guitarist and Basketball player.

Experience: Naval Architect Intern at Gibbs & Cox. Engine Cadet onboard the M/V Yorktown Express. Composites intern at New England Boatworks.

Project Contributions: Stability Lead and Weights Lead.

Career Plans: Test surfer in Kelly Slater's revolutionary wave pool.

BEN HUNT

(Burlington, VT)



Hobbies: Offshore Sailor and Composite boat builder.

Experience: Cadet onboard the M/V Bay State. Engineering Intern at NASSCO. Composites intern at Brewer Marine Yacht yard.

Project Contributions: Marine Engineering Systems Lead and Project Quality Assurance Lead.

Career Plans: Any job in Naval Architecture that lets me do a lot of sailing.