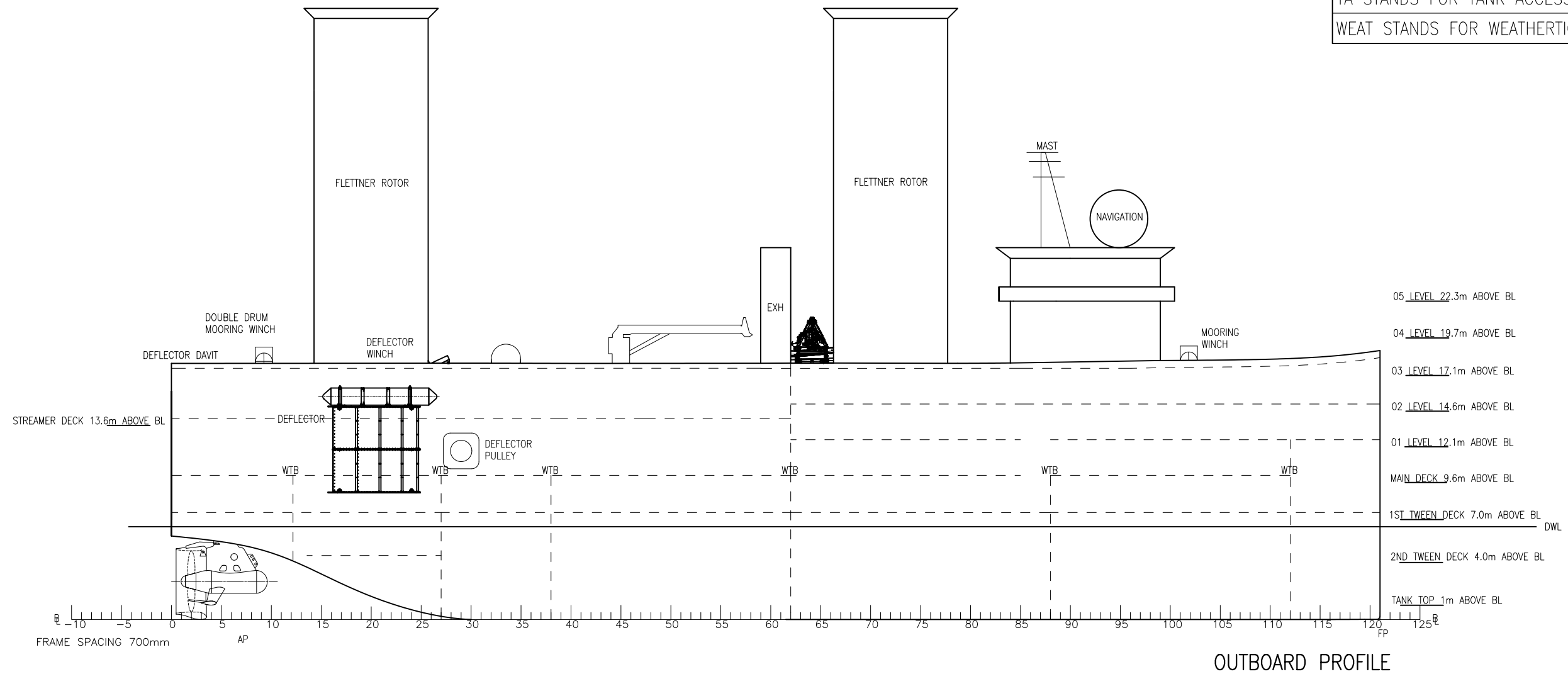


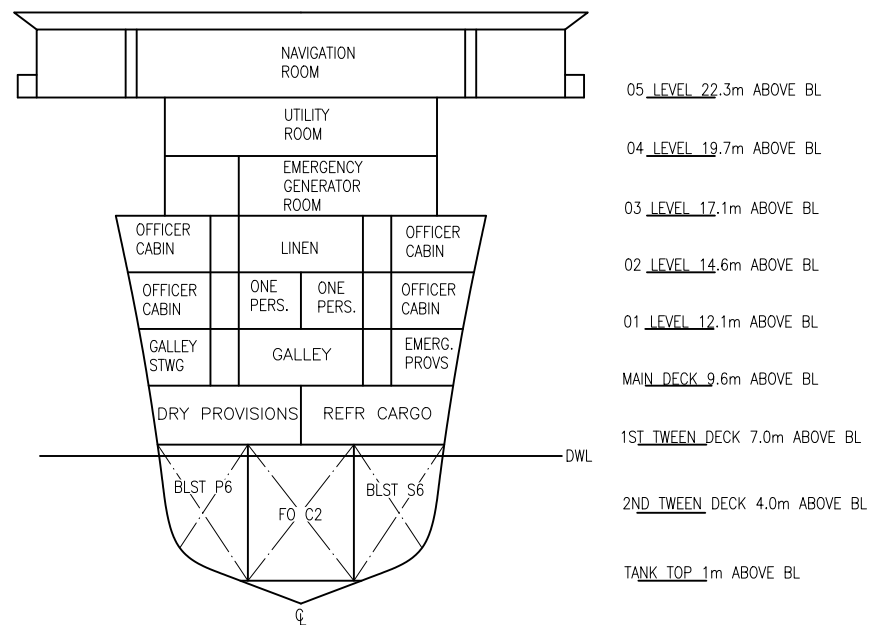
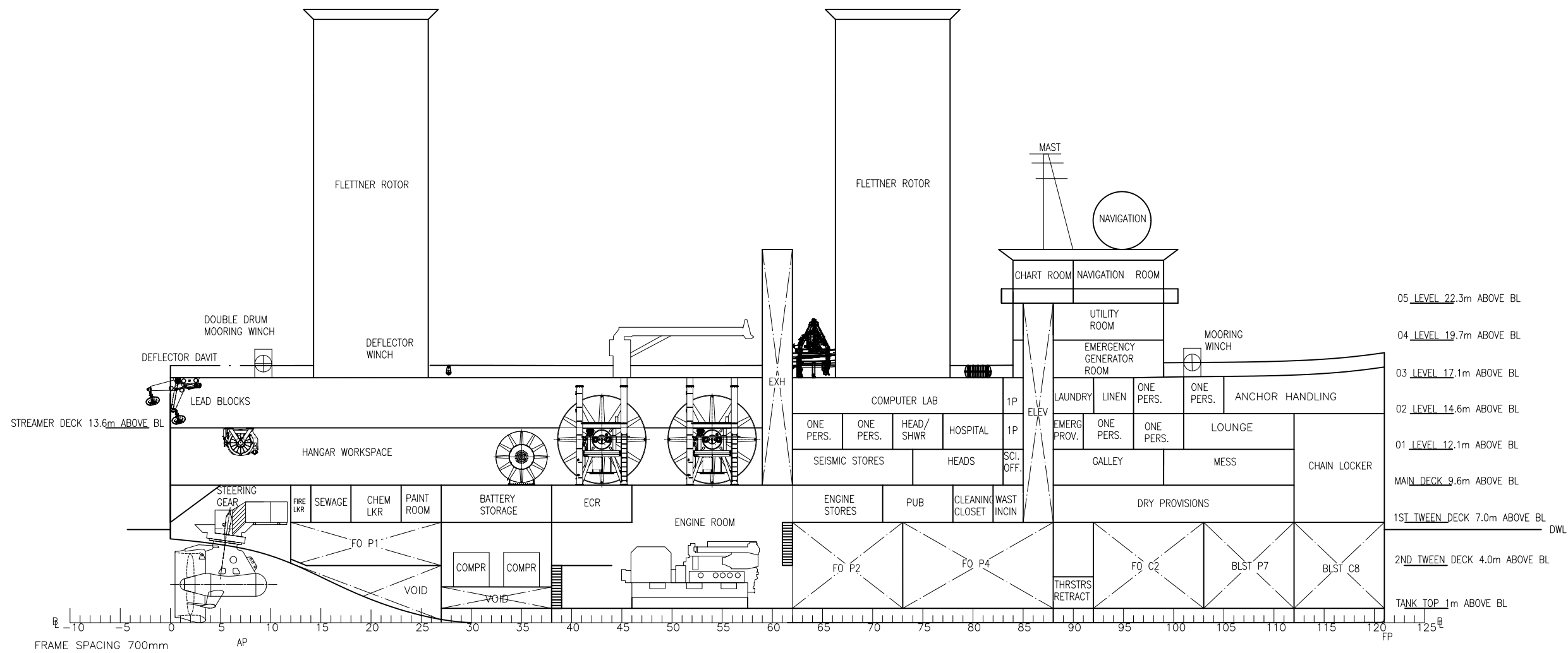
GENERAL NOTES
TA STANDS FOR TANK ACCESS
WEAT STANDS FOR WEATHERTIGHT




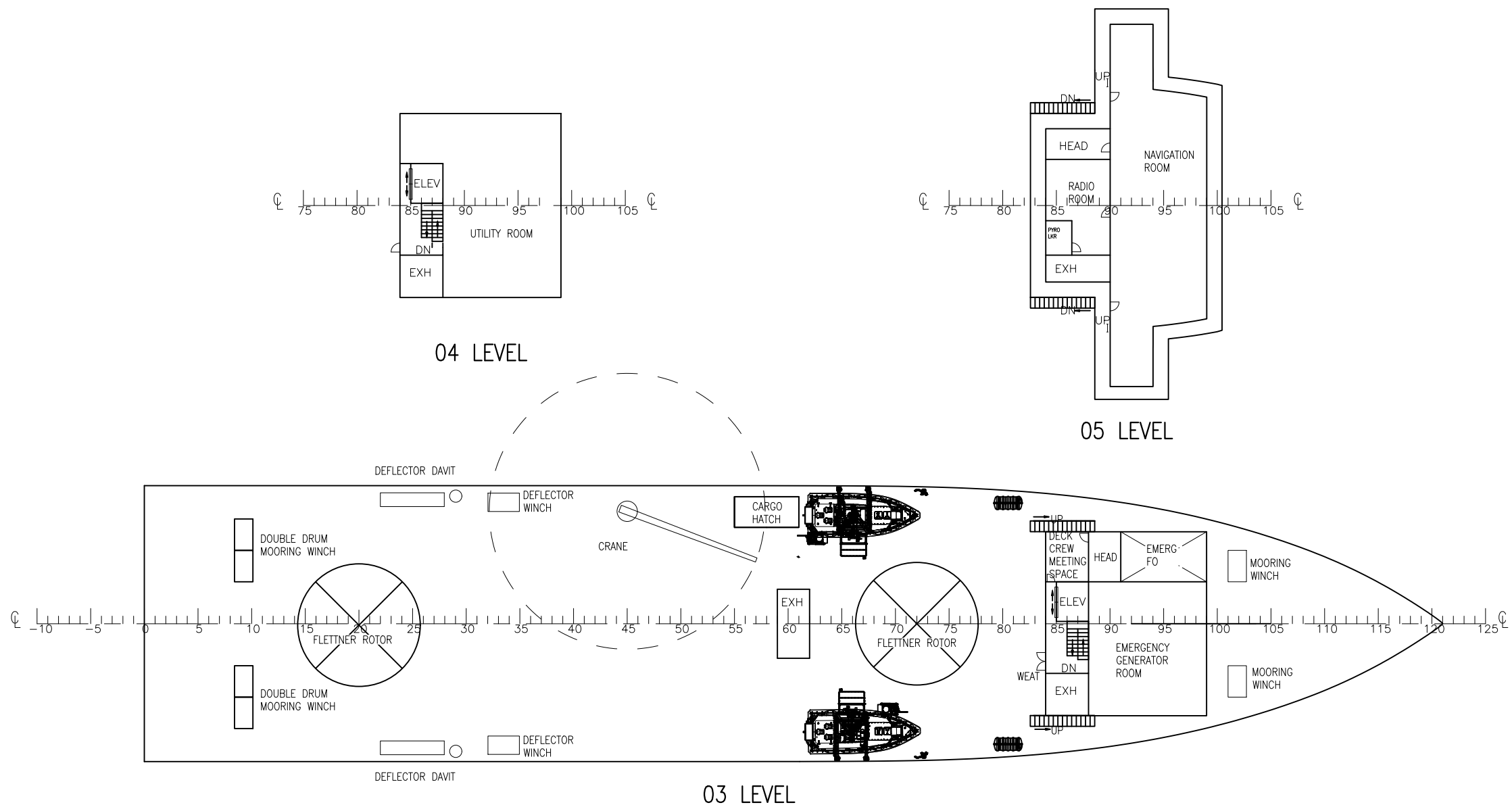
PRINCIPAL PARTICULARS	
LOA	84.7m
LWL	84.7m
LPP	80.7m
BEAM	18m
DESIGN DRAFT	6.5m
DEPTH	18.3m
DESIGN SPEED	12kts
SURVEY SPEED	4.5kts

REVISIONS				
REV	ZONE	ITEM	DESCRIPTION	DATE
1	ALL	1	PRELIMINARY GENERAL ARRANGEMENT	3/21/22
2	ALL	1	NEW HULL FORM AND BASIC FORMATTING EDITS	3/28/22
3	ALL	1	ADDED MACHINERY AND REARRANGED FOR BETTER STABILITY	4/5/22
4	ALL	1	REARRANGED MACHINERY AND ADDED FUEL	4/12/22
5	ALL	1	MINOR FIXES	4/26/22
6	ALL	1	ADDED MACHINERY	5/3/22
7	ALL	1	UPDATED SEISMIC HANGAR AND CHANGED DWL	5/15/22
8	ALL	1	REFORMATTED AND EDITED FOR FINAL SUBMISSION	6/6/22

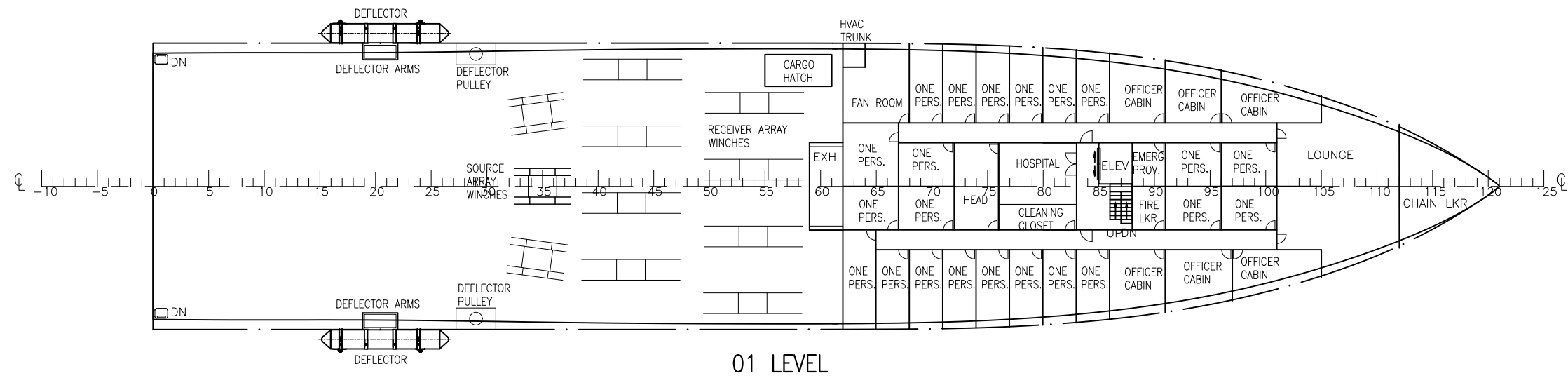
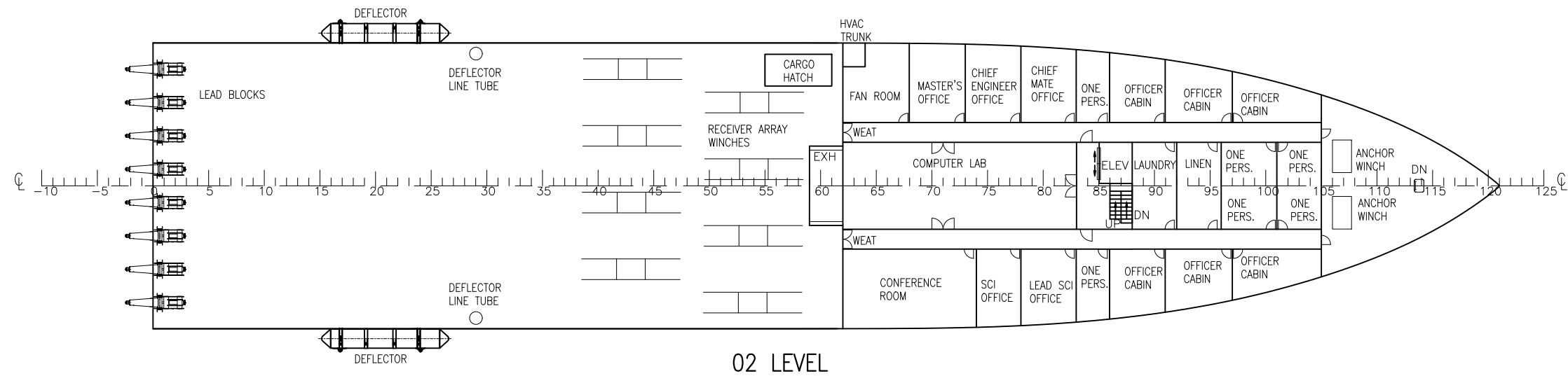
<h1>GENERAL ARRANGEMENT</h1>		SEISMIC SURVEY VESSEL PORPOISE	
		JACK KIRK, COLE MATTHES, KIRA SHAW, & DECK UTTMARK	SCALE 1:300 SIZE B




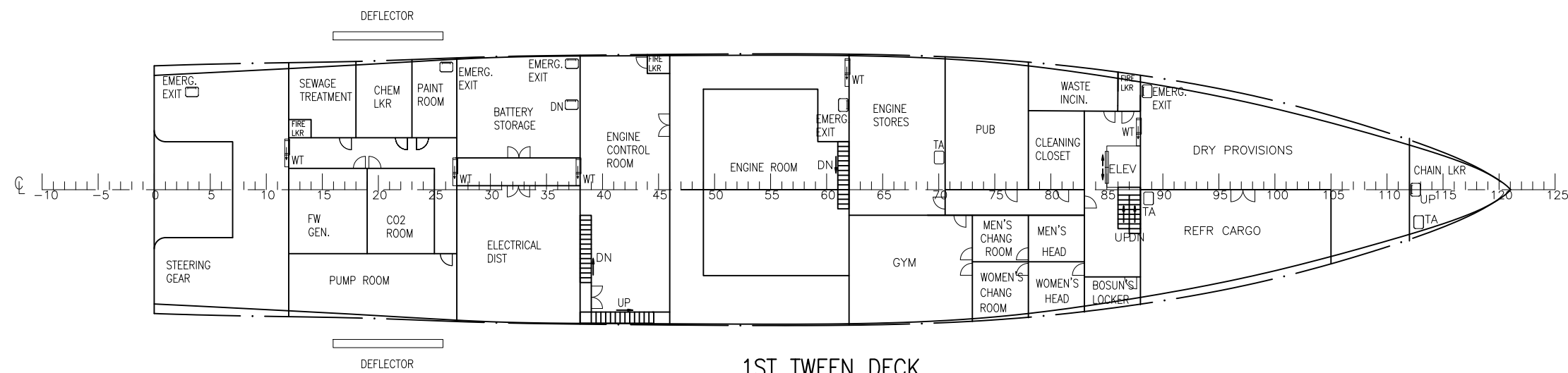
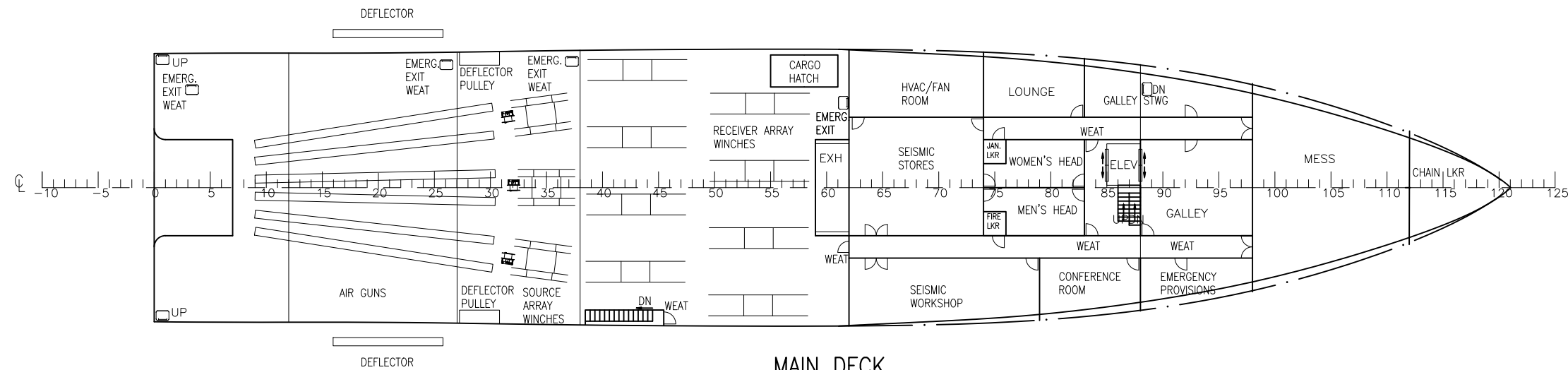
<h1>GENERAL ARRANGEMENT</h1>		SEISMIC SURVEY VESSEL PORPOISE	
		SCALE 1:300	REV 8
JACK KIRK, COLE MATTHES, KIRA SHAW, & DECK UTTMARK	SIZE B	SHEET 2 OF 6	




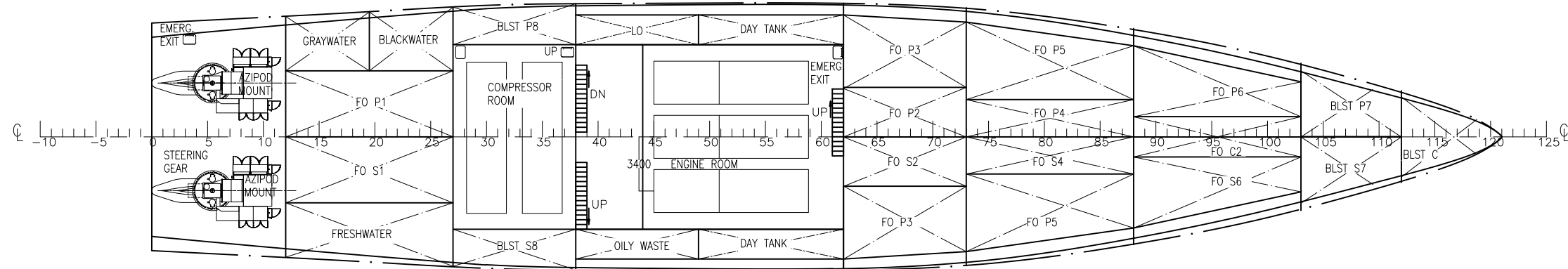
<h1>GENERAL ARRANGEMENT</h1>		SEISMIC SURVEY VESSEL PORPOISE	
		JACK KIRK, COLE MATTHES, KIRA SHAW, & DECK UTTMARK	SCALE 1:300 SIZE B



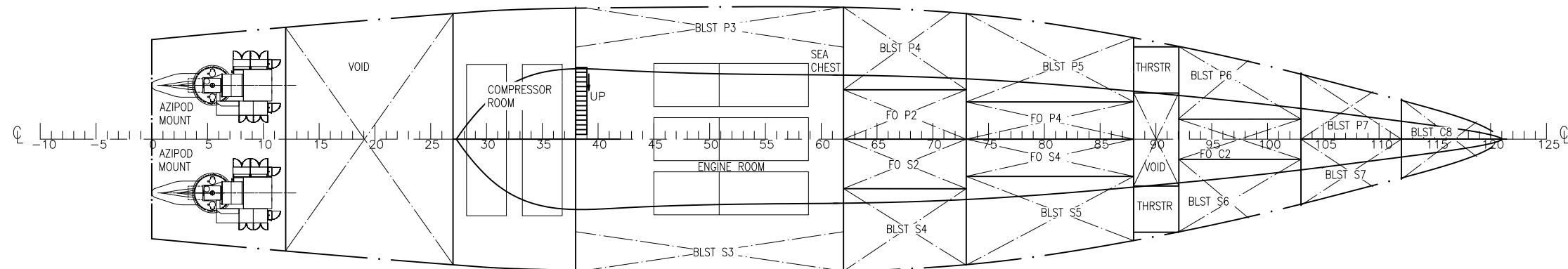
<h1>GENERAL ARRANGEMENT</h1>		SEISMIC SURVEY VESSEL PORPOISE	
		JACK KIRK, COLE MATTHES, KIRA SHAW, & DECK UTTMARK	SCALE 1:300 REV 8 SIZE B SHEET 4 OF 6



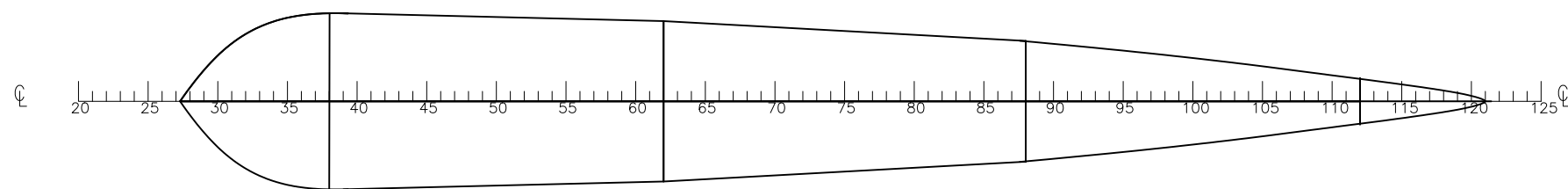
<h1>GENERAL ARRANGEMENT</h1>	 SEISMIC SURVEY VESSEL PORPOISE	
	JACK KIRK, COLE MATTHES, KIRA SHAW, & DECK UTTMARK	SCALE 1:300 SIZE B



2ND TWEEN DECK



TANK TOP



DOUBLE BOTTOM

<h1>GENERAL ARRANGEMENT</h1>		SEISMIC SURVEY VESSEL PORPOISE	
		JACK KIRK, COLE MATTHES, KIRA SHAW, & DECK UTTMARK	SCALE 1:300 SIZE B