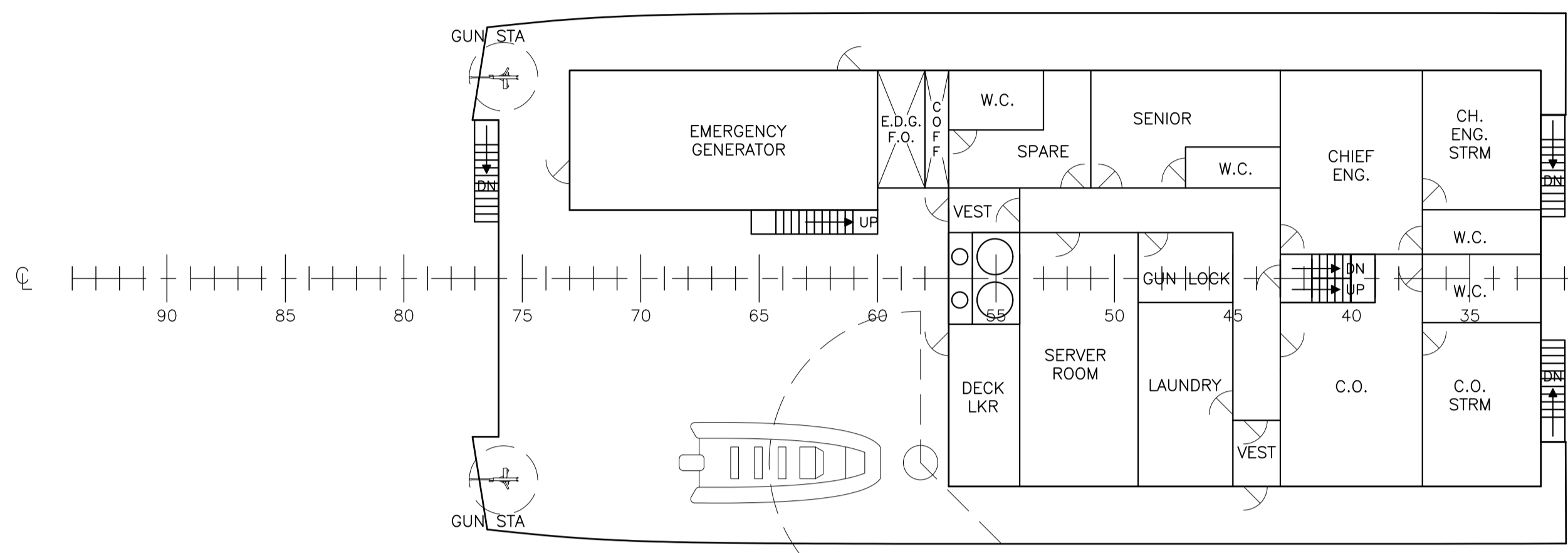
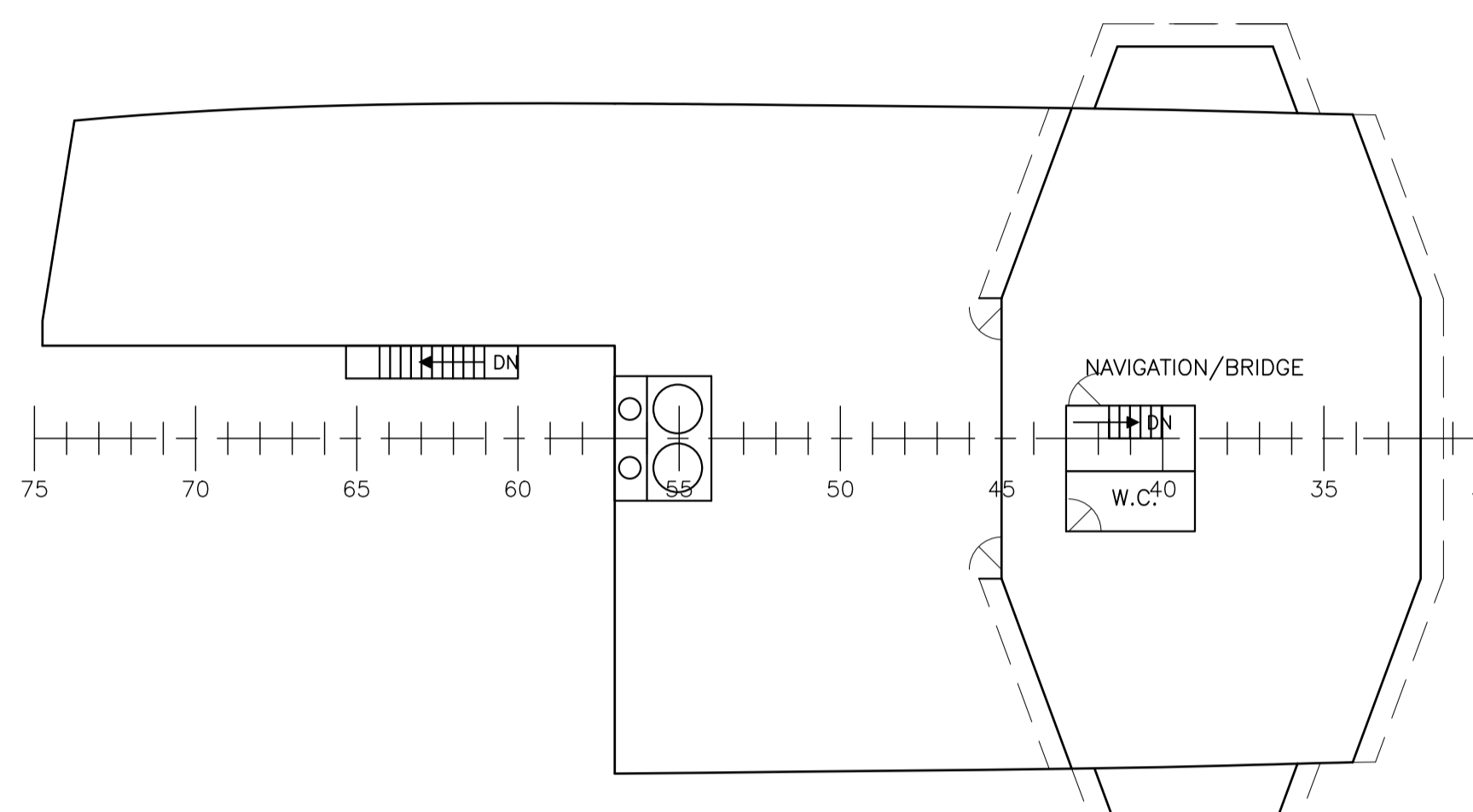


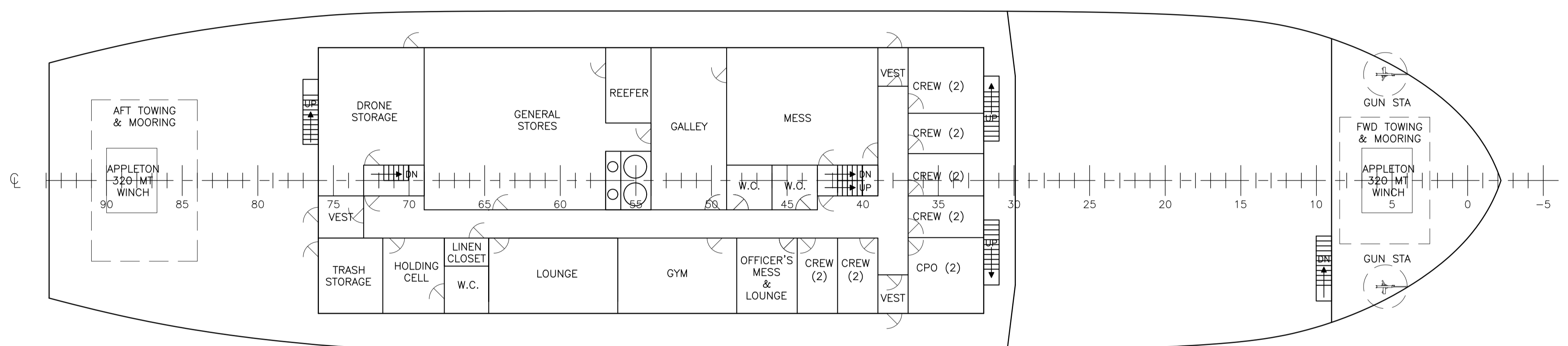
INBOARD PROFILE



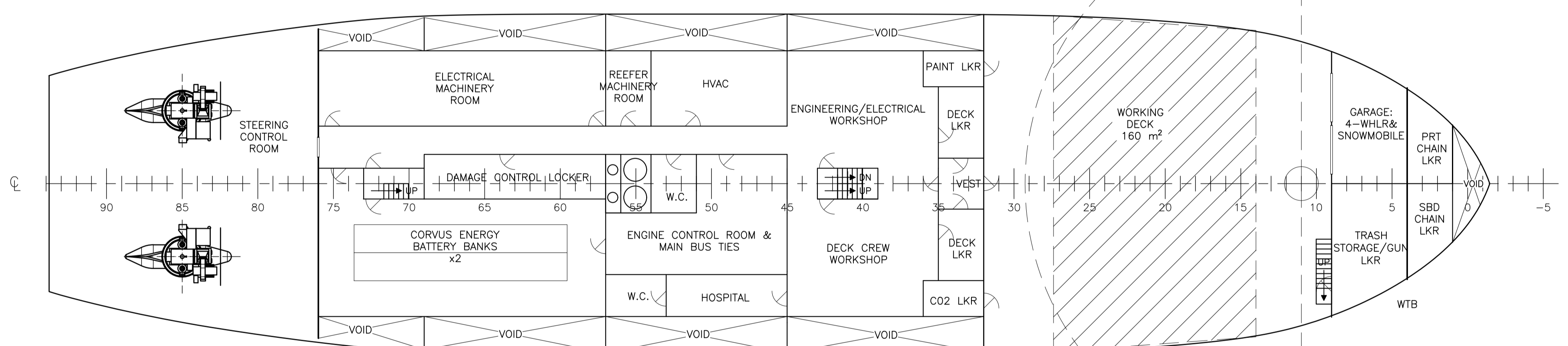
02 LEVEL



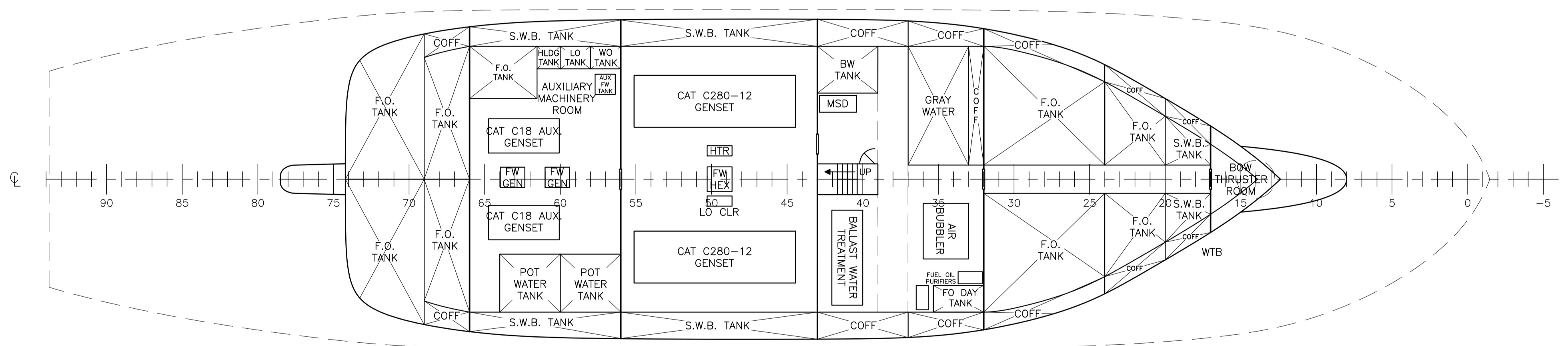
03 LEVEL



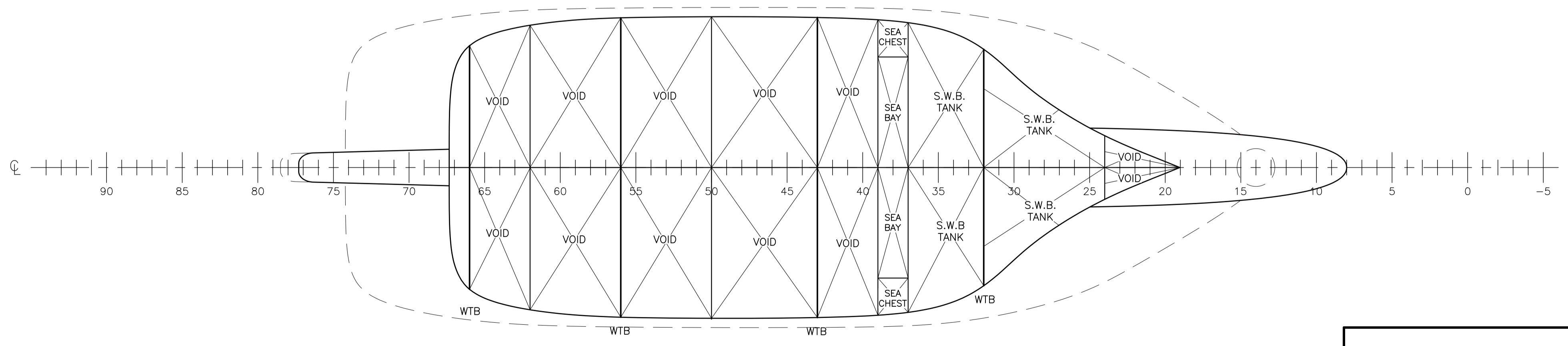
01 LEVEL



MAIN DECK



1ST PLATFORM



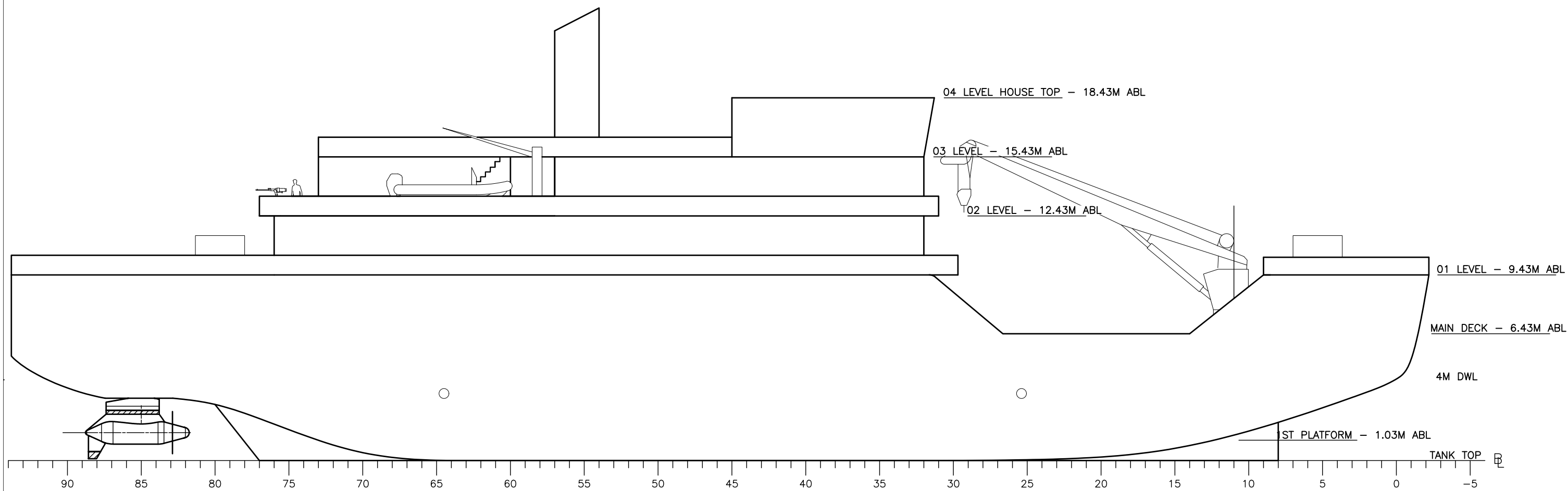
TANK DECK

LIST OF PARTICULARS	
LOA	72.0 M
LWL	67.2 M
MAX BEAM	16.8 M
FULL LOAD DRAFT	4.0 M
DEPTH	9.43 M
FRAME SPACING	0.75 M

REVISION BLOCK		
REV. A	3/21/2023	INITIAL RELEASE
REV. B	3/28/2023	ADDED MENTOR COMMENTS & INITIAL HULL LINES
REV. C	4/4/2023	ADDED NEW MENTOR COMMENTS & UPDATED HULL
REV. D	4/11/2023	MENTOR COMMENTS & ME SYSTEM CONSIDERATIONS
REV. E	4/25/2023	ME SYSTEM CONSIDERATIONS & CRANE
REV. F	5/7/2023	FINAL HULL
REV. G	5/16/2023	TANKAGE UPDATE, 2m LENGTHEN
REV. H	6/7/2023	FINAL CONCEPT DESIGN


SHIP DESIGN 1		
THE ICY ELFY		
ZANE BALLISTER, MATTHEW COOGAN, MAX MAH, & KENNA REED		
TITLE	GENERAL ARRANGEMENT DRAWING	DATE: 6/7/23
SHEET NO.	1 OF 3	REV. H
SCALE:	1:150	

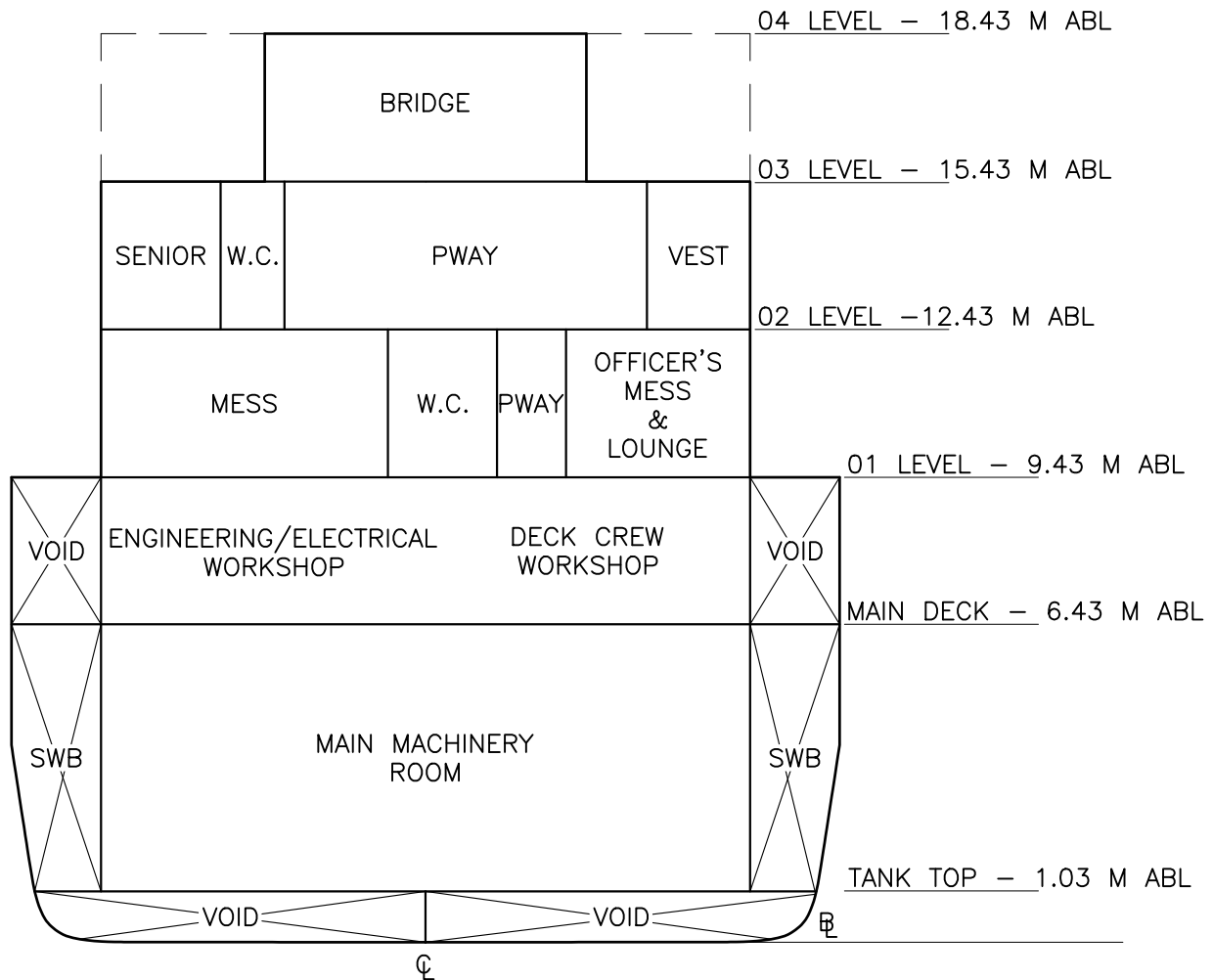




OUTBOARD PROFILE



SHIP DESIGN 1		
		
THE ICY ELFY ZANE BALLISTER, MATTHEW COOGAN, MAX MAH, & KENNA REED		
TITLE GENERAL ARRANGEMENT DRAWING		DATE: 6/7/23
SHEET NO. 2 OF 3	SCALE: 1:200	REV. H



MIDSHIP ARRANGEMENT
FRAME 45
LOOKING FORWARD

SHIP DESIGN 1		
THE ICY ELFY		
ZANE BALLISTER, MATTHEW COOGAN, MAX MAH, & KENNA REED		
TITLE GENERAL ARRANGEMENT DRAWING		DATE: 6/7/23
SHEET NO. 3 OF 3	SCALE: 1:150	REV. H