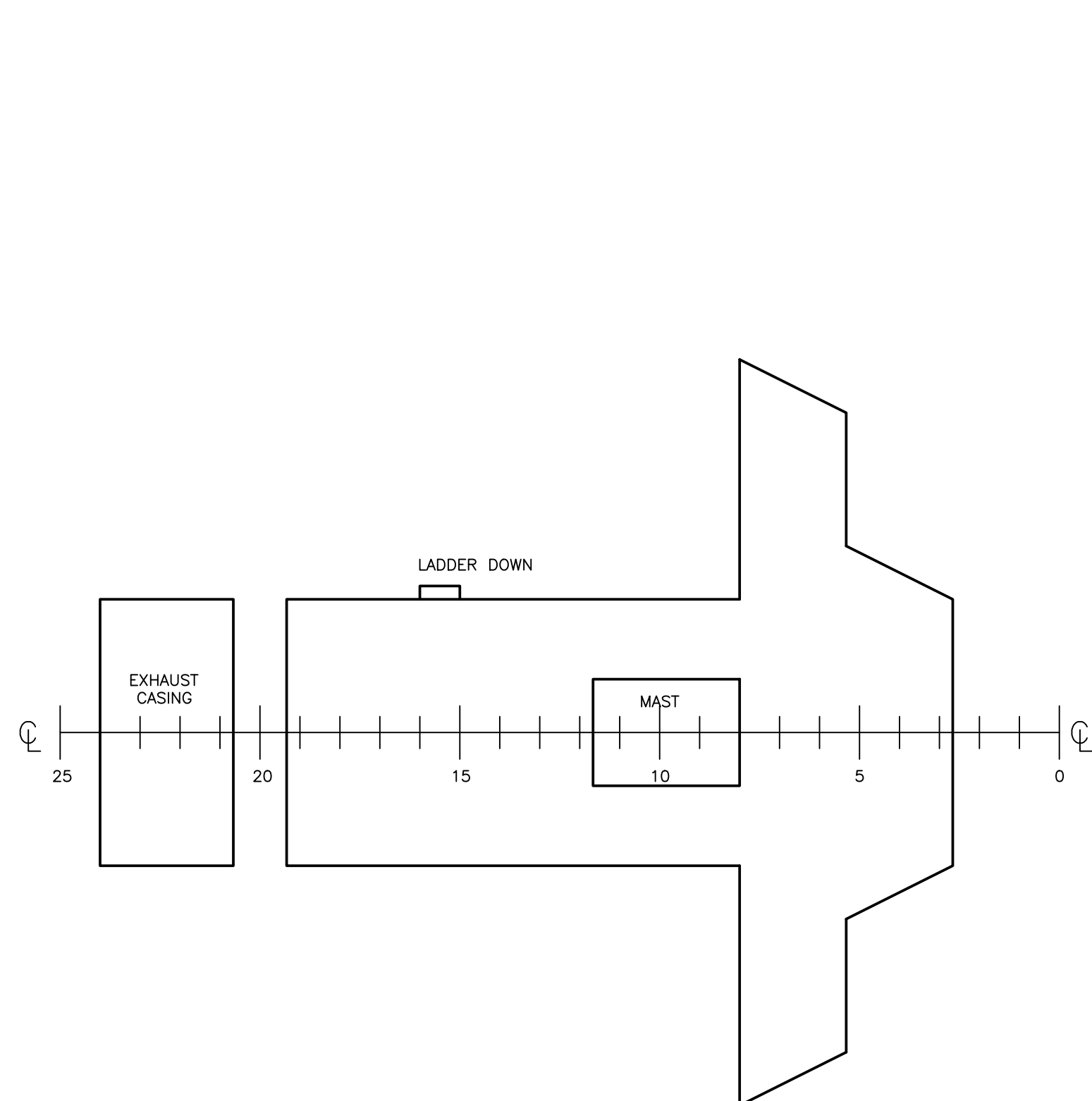
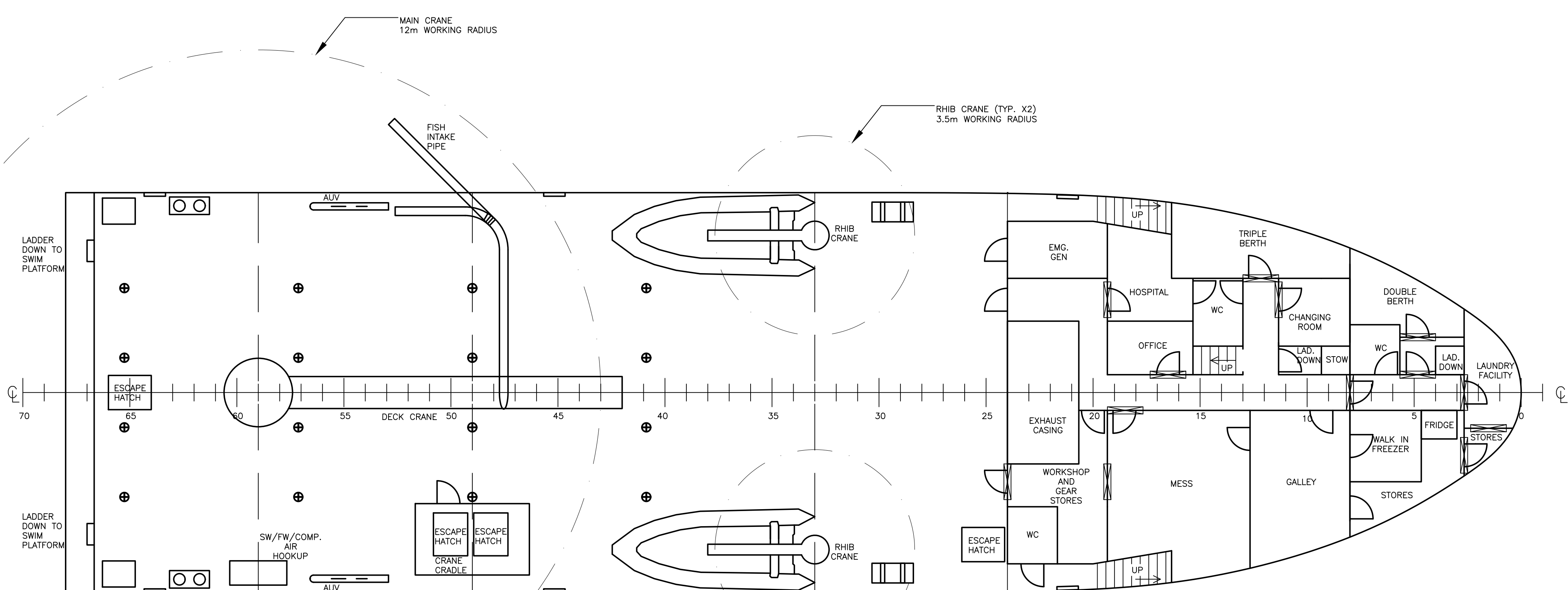


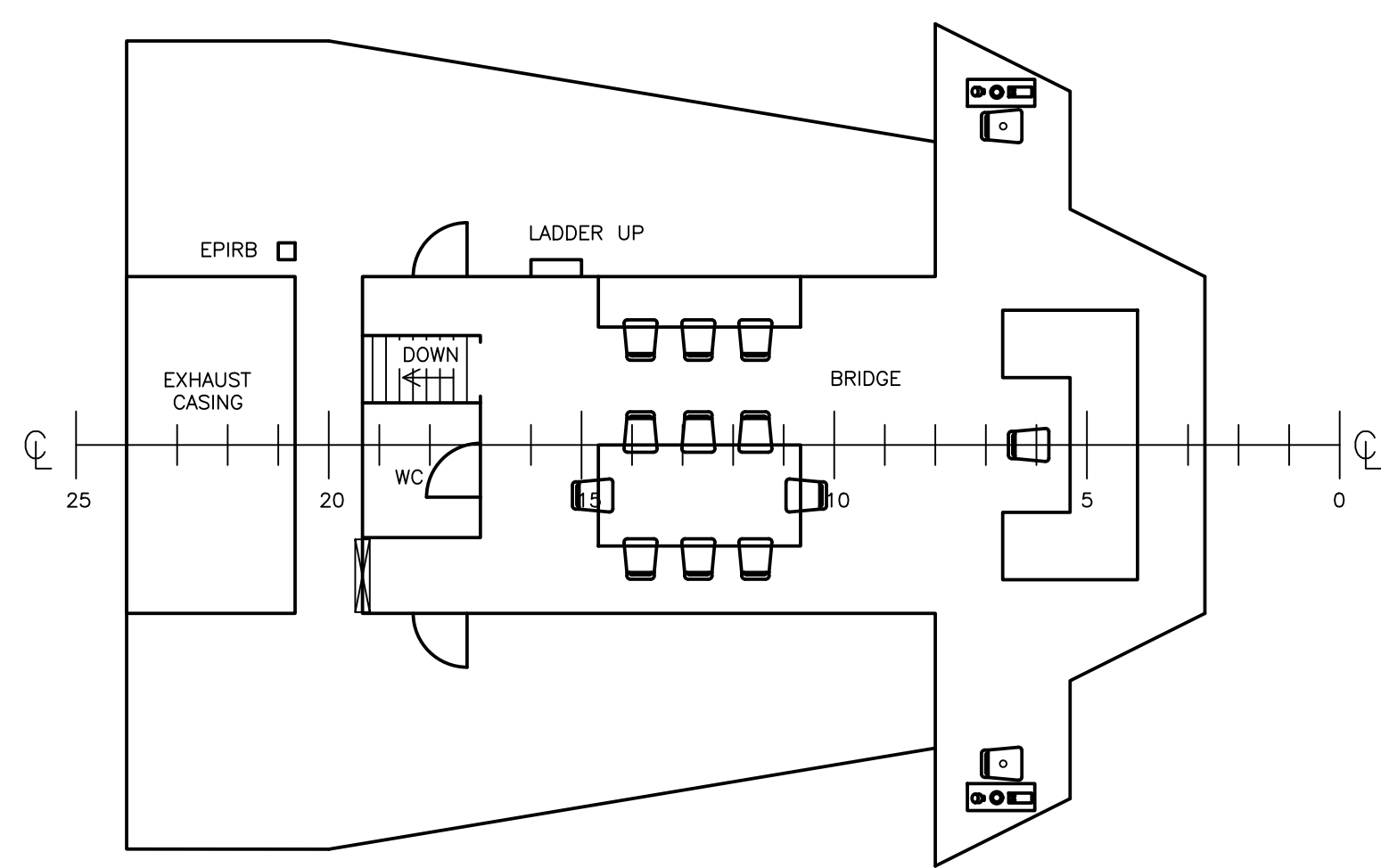
INBOARD PROFILE



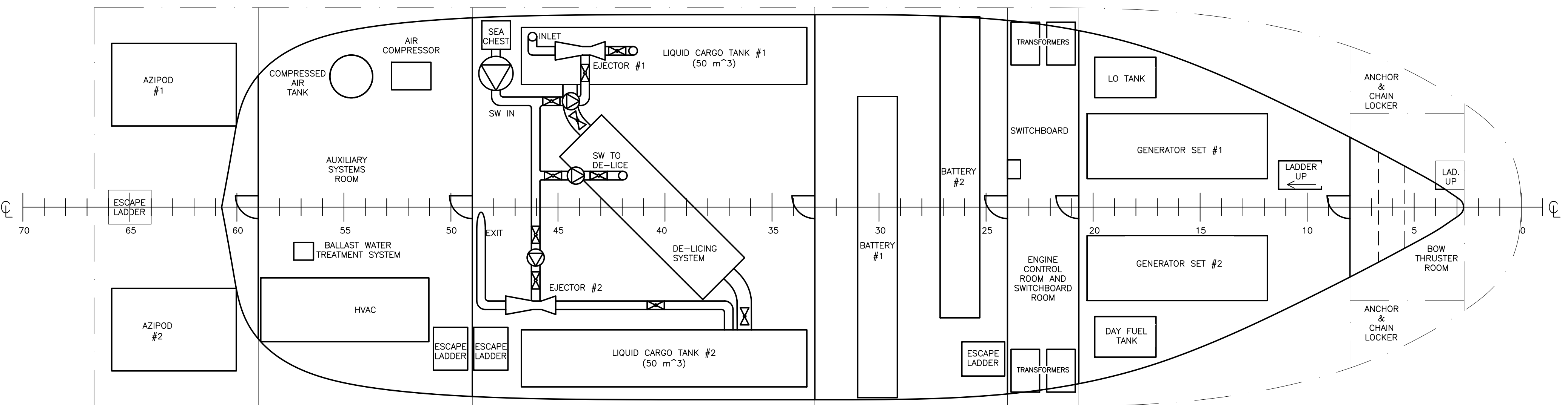
BRIDGE TOP  
14000mm ABL



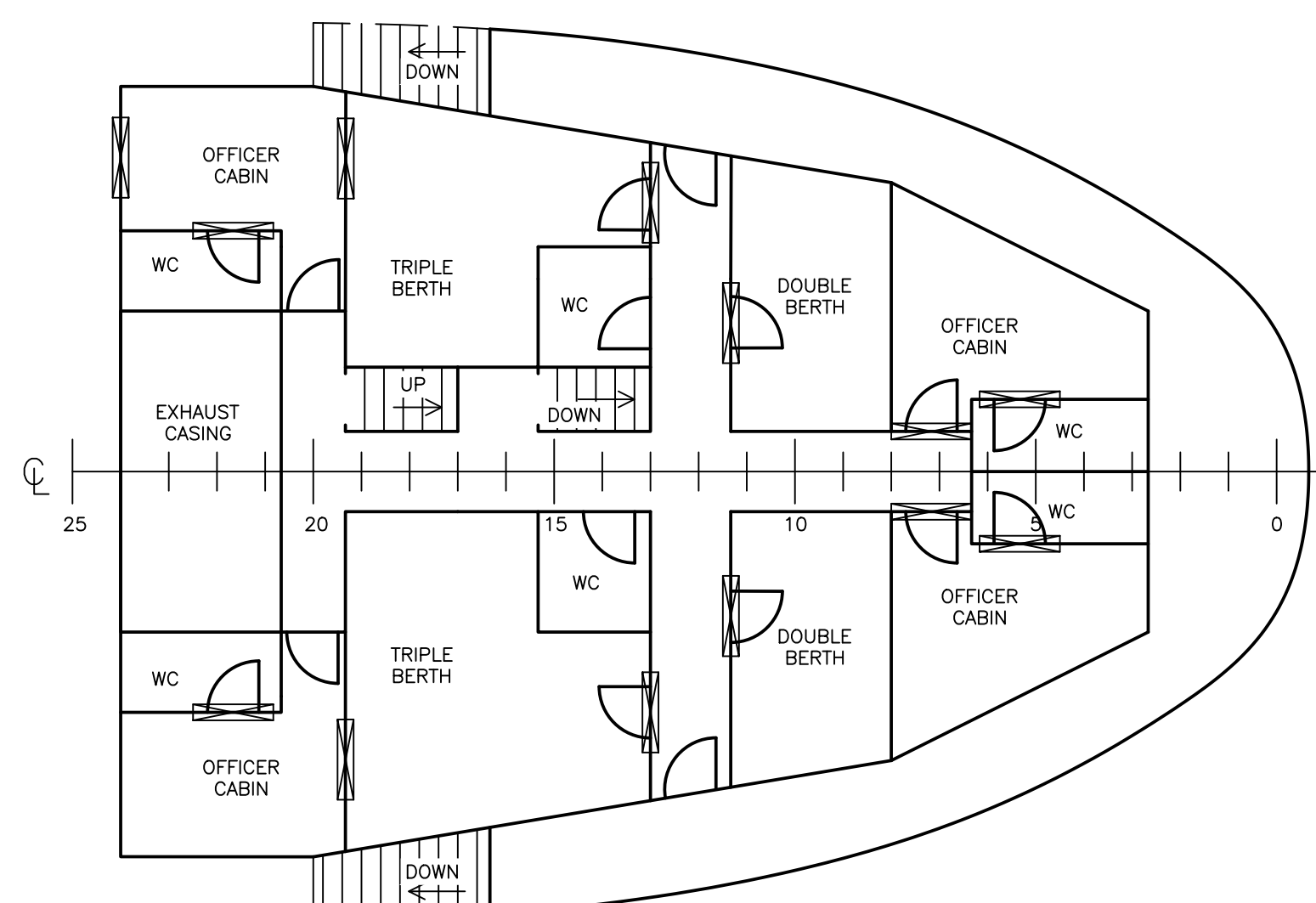
MAIN DECK  
5000mm ABL



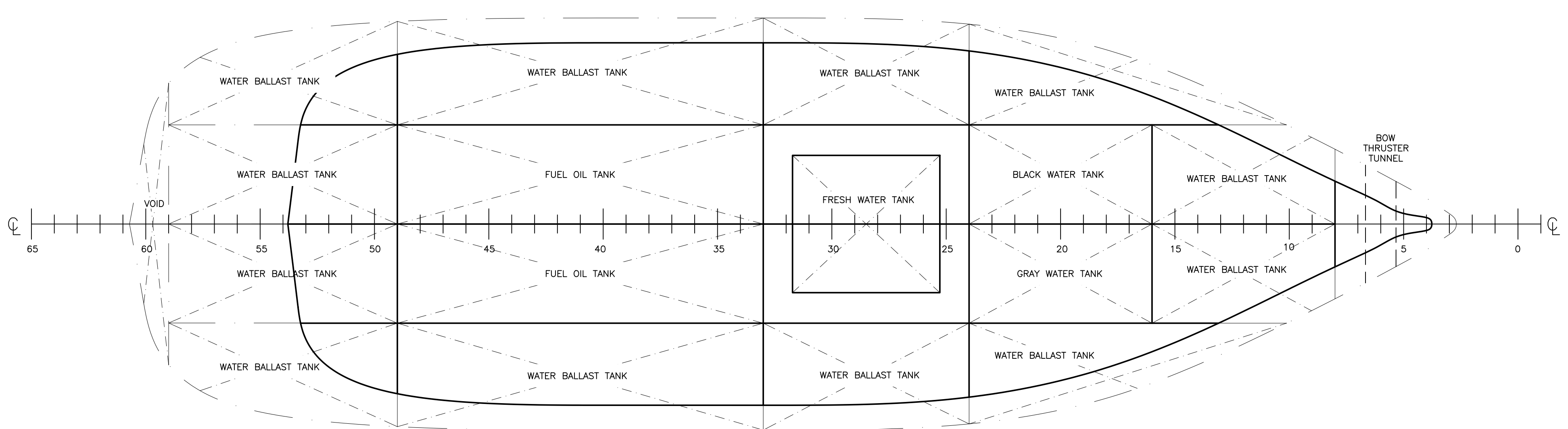
BRIDGE DECK  
10750mm ABL



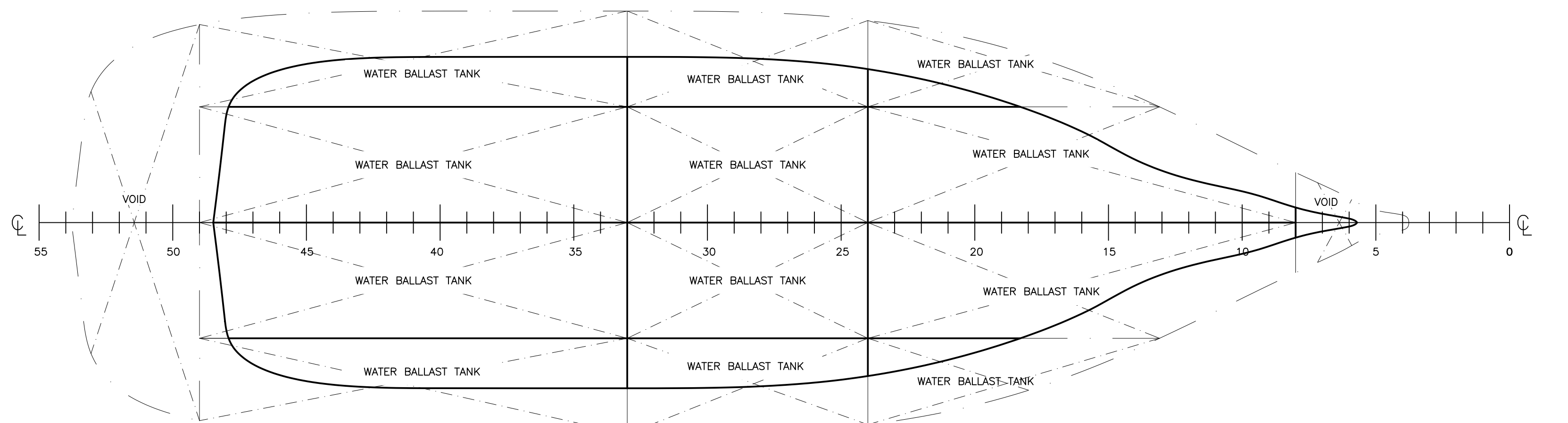
MACHINERY DECK  
1500mm ABL



DECK 01  
8000mm ABL



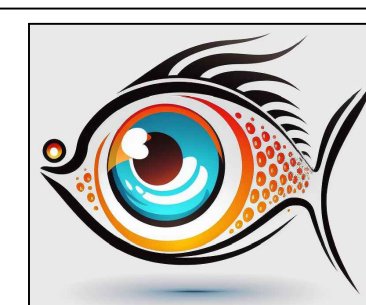
TANK TOP  
500mm ABL



BELOW TANK TOP

PRINCIPAL PARTICULARS

LENGTH OVERALL	51.5	m
LENGTH WATERLINE	50.4	m
BEAM	14.0	m
DEPTH	5.0	m
DESIGN DRAFT	4.0	m
DESIGN SPEED	12	kts



THE AQUAHOLICS

MV FISHIONARY  
GENERAL ARRANGEMENT  
PROFILE & DECKS

DATE: 6/6/2023

REV:6

SCALE: 1:100

SHEET 1 OF 1